



Report of Test

LLIA001617-015

Integrating Sphere Report

Catalog Number: LPT100W-850-EX39 High Setting (100W)

Mogul-base retrofit lamp mounted VBU, formed plastic housing, formed aluminum heatsinks, clear plastic enclosures. 416 white LEDs, 12 CLW08E-100WC-16C2B-2835-A1 LED boards with 32 LEDs each and one CLW08E-100WD-16C2B-2835-A0 LED board with 32 LEDs

One internal LED driver



Performance Summary

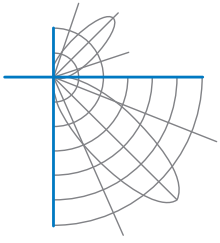
Voltage	120.0 Vac
Current	0.7821 A
Power	93.00 W
Frequency	59.99 Hz
Power Factor	0.991
Current THD	10.5 %
Total Luminous Flux	14513.2 lm
Efficacy	156.1 lm/W
Chromaticity (x,y)	(0.3414, 0.3517)
(u',v')	(0.2089, 0.4842)
Duv	0.0015
CCT	5142 K
CRI (Ra)	82
R9	4
TM-30: Rf	81
TM-30: Rg	96
TM-30: Rcs,h1	-13

Prepared For:

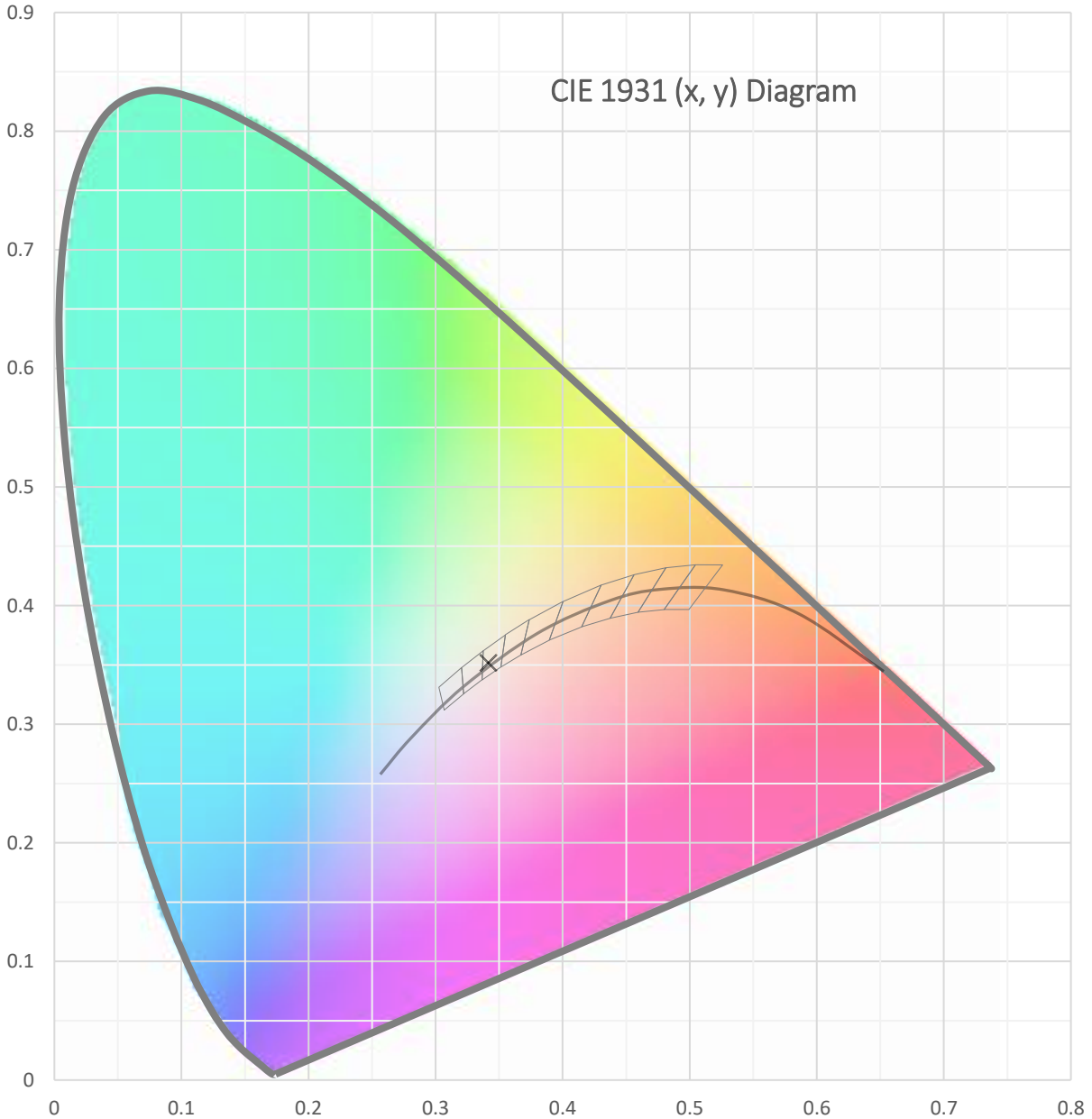
Topaz Lighting Corp
925 Waverly Avenue
Holtsville, NY 11742, USA

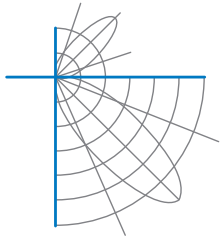
Test date: 12/28/2021
Report date: 12/30/2021

Signed: _____

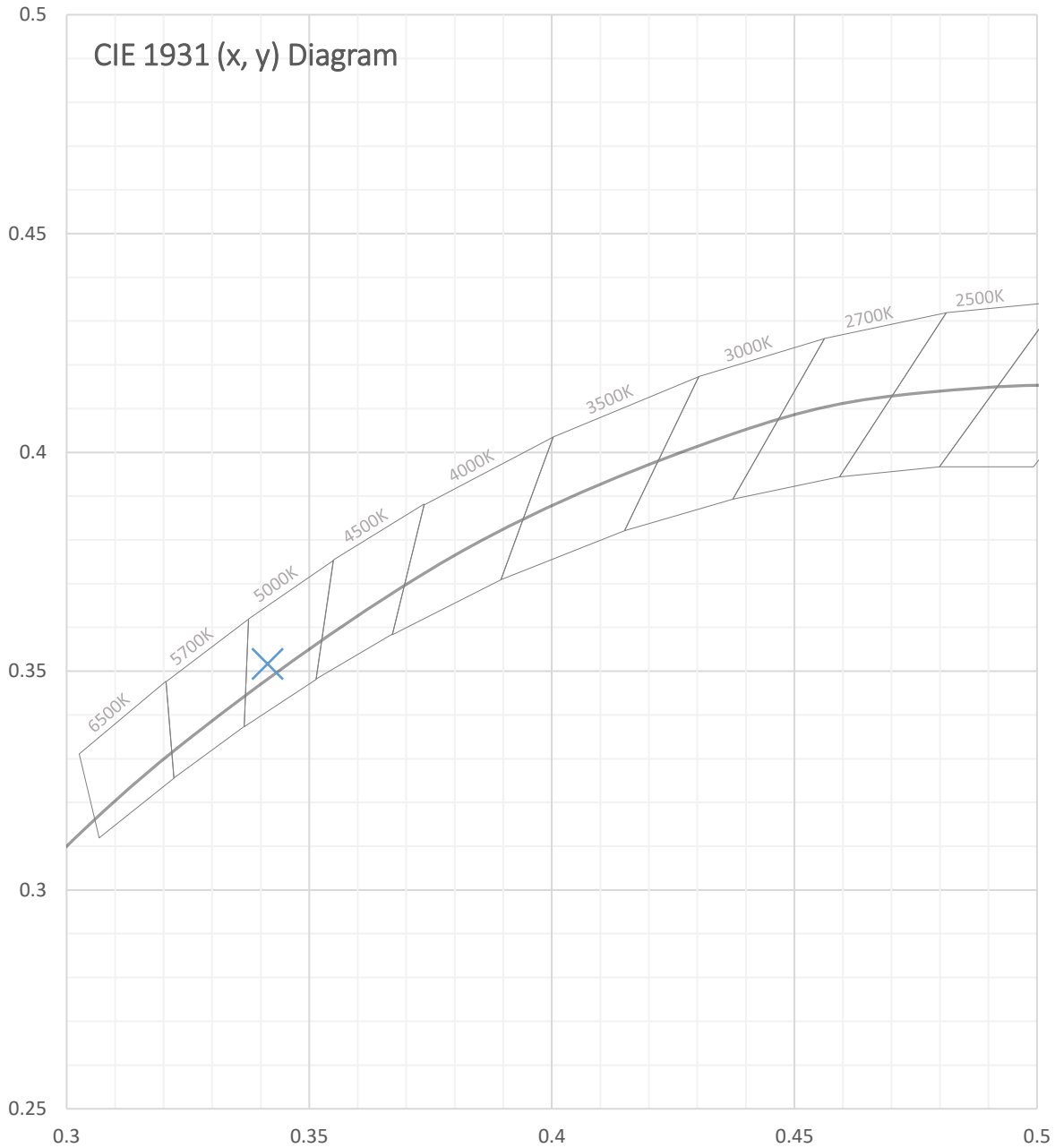


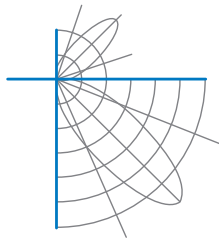
Test Report Number: LLIA001617-015





Test Report Number: LLIA001617-015





Test Report Number: LLIA001617-015

Total Radiant Flux	45.58 W
Total Luminous Flux	14513.2 Lm
Chromaticity CIE 1931 (x, y)	(0.3414, 0.3517)
Chromaticity CIE 1976 (u', v')	(0.2089, 0.4842)
Correlated Color Temperature (CCT)	5142 K
Color Rendering Index (Ra)	82
R1	80
R2	87
R3	91
R4	82
R5	81
R6	82
R7	86
R8	66
R9	4
R10	68
R11	82
R12	62
R13	82
R14	95
TM-30: Rf	81
TM-30: Rg	96
TM-30: Rcs,h1	-13
Distance from Planckian Locus (Duv)	0.0015
Scotopic/Photopic Ratio ‡	1.960

Electrical Data

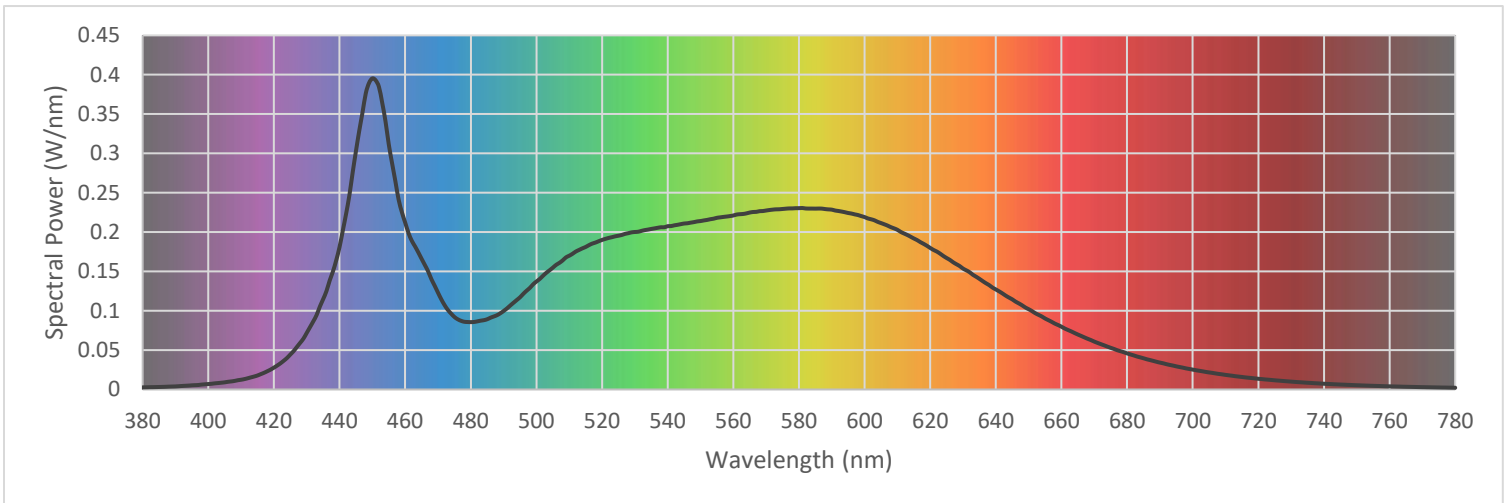
Voltage	120.0 Vac
Current	0.7821 A
Power	93.00 W
Frequency	59.99 Hz
Power Factor	0.991
Current THD	10.5 %



Test Report Number: LLIA001617-015

Summary Spectral Power Distribution (wavelength - nm, spectral power - W/nm)

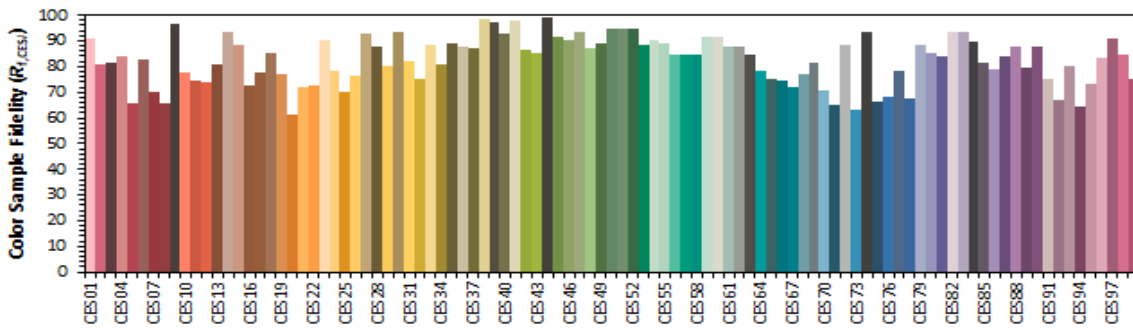
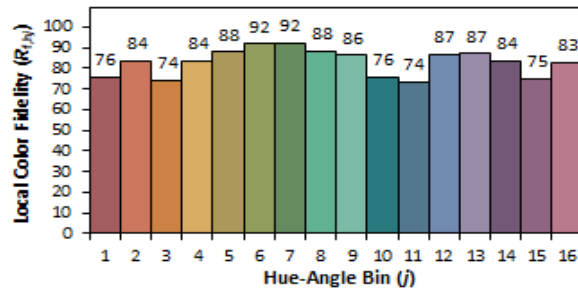
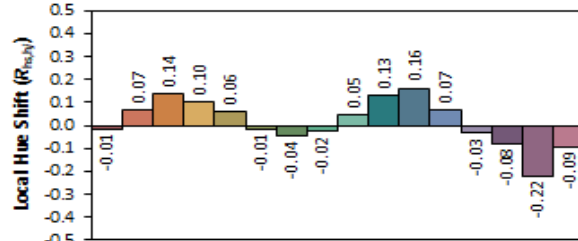
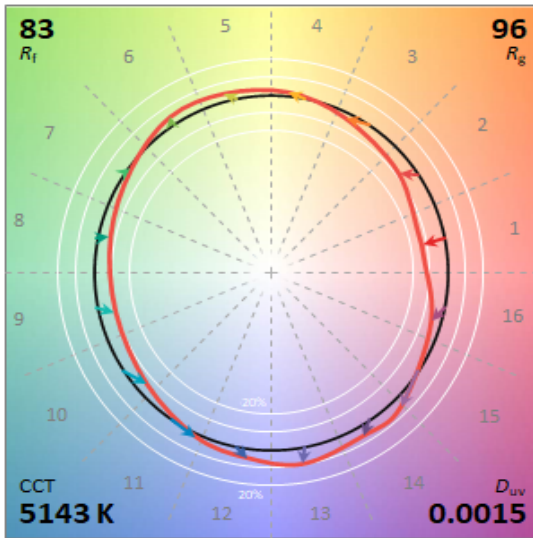
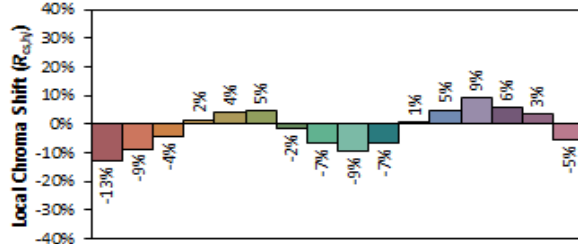
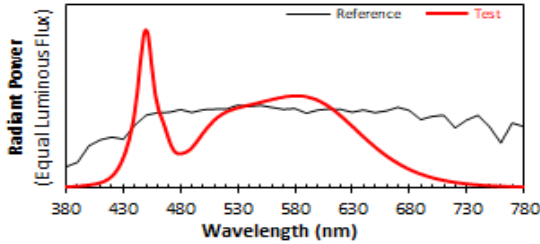
380	0.002710	480	0.085578	580	0.230389	680	0.045855
385	0.003159	485	0.089256	585	0.229815	685	0.039655
390	0.003880	490	0.099719	590	0.228549	690	0.034147
395	0.005270	495	0.117149	595	0.224263	695	0.029368
400	0.006904	500	0.137219	600	0.219083	700	0.025246
405	0.009070	505	0.154796	605	0.211487	705	0.021657
410	0.012356	510	0.169990	610	0.202905	710	0.018538
415	0.017787	515	0.181108	615	0.191907	715	0.015896
420	0.027746	520	0.190053	620	0.179884	720	0.013594
425	0.044460	525	0.195402	625	0.167053	725	0.011639
430	0.071911	530	0.200122	630	0.153624	730	0.009989
435	0.114739	535	0.204005	635	0.140568	735	0.008528
440	0.181171	540	0.207512	640	0.127092	740	0.007290
445	0.303079	545	0.210883	645	0.114517	745	0.006271
450	0.395258	550	0.214042	650	0.102025	750	0.005385
455	0.311502	555	0.218148	655	0.090198	755	0.004620
460	0.211959	560	0.221108	660	0.079752	760	0.003988
465	0.166028	565	0.224826	665	0.069821	765	0.003422
470	0.123005	570	0.227416	670	0.060855	770	0.002950
475	0.092134	575	0.229372	675	0.052936	775	0.002553
						780	0.002208





Test Report Number: LLIA001617-015

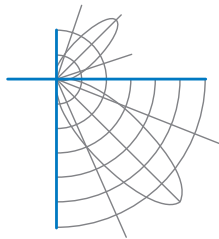
IES TM-30 Details



Notes:

x 0.3414
y 0.3516
u' 0.2089
v' 0.4841

CIE 13.3-1995
(CRI)
R_a 82
R_s 4



Test Report Number: LLIA001617-015

Test Equipment Configuration: LightLab International Allentown 2m Integrating Sphere
Measurements acquired using a Labsphere CDS 2600 spectroradiometer
Testing was performed using 4π geometry

Test Temperature: 25.5 °C

Test Procedure: Tested in accordance with the applicable sections of:
LM-79-19, LM-78-20, LM-58-20, ANSI_ANSLG C78.377-2017, TM-30-20

Significance: The laboratory has not participated in the selection of samples to be tested.
All testing is performed on the understanding that the significance of the report is limited to the extent that the test sample is representative of production units.

Notes: The measurements and other derived quantities contained in this report are based on the absolute data as measured.

Prorating the performance of the sample for the use of other component combinations (such as lamp / LED / Ballast / driver), or for use in different environmental conditions than that tested, may produce erroneous results.

This report is free of erasures and corrections

This report may contain data that are not covered by the NVLAP accreditation. Quantities marked with ‡ are not covered.

This report must not be used by the customer to claim product certification, approval or endorsement by NVLAP, NIST, or any agency of the Federal Government.