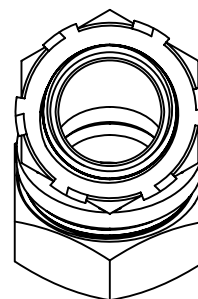
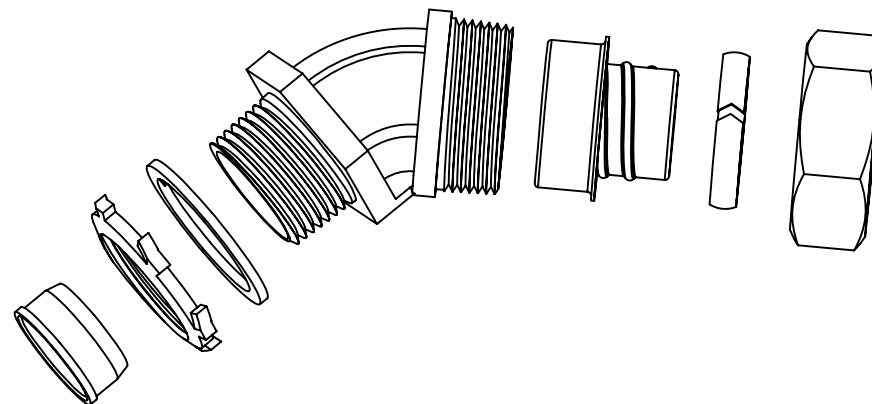
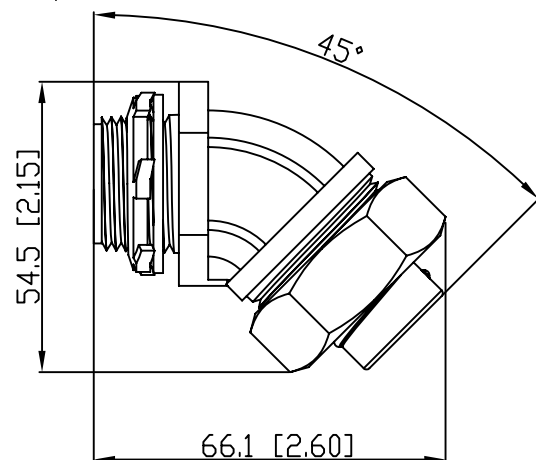
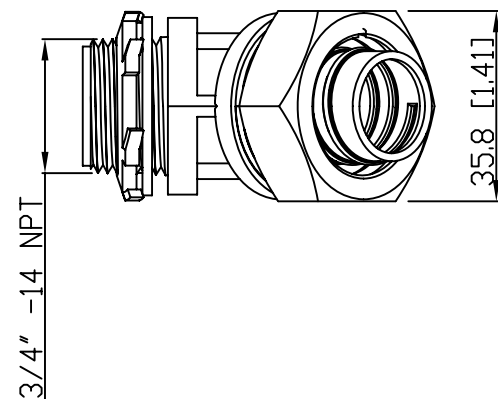


SIDES	BOTTOM

Material:Malleable Iron

[illegible]

This data sheet is for reference only .GARVIN INDUSTRIES reserv
the right to make changes to the design without prior notice.

STANDARD PACKING	GARVIN INDUSTRIES		
10 PCS	TITLE 45° Liquid Tight Conn, 3/4"		
	SIZE A4	DWG NO. DS-LTC-7545	REV A