

## LED Linear Luminaire 4 FT TRI-PROOF VAPOR TIGHT



### High Impact Lens and Aluminum Housing

Topaz's Tri-Proof Vapor Tight Luminaire is the perfect solution for a wide range of applications including garage, warehouse, stairwells, marine and subways. Provides an IP65 rated water proof, dust proof and corrosion proof luminaire. Superior quality compared to other products on the market, and offering 130 lumens per watt. The luminaire can be surface or suspension mounted.

### FEATURES

- Aluminum housing for thermal management and polycarbonate lens
- 50W replaces 3x32W T8 fixture
- Battery backup version available
- 0-10V Dimmable version available by special order
- 6 foot power cord included
- ETL Sanitation Listed for Food Service Equipment
- 5 year warranty

### APPLICATIONS

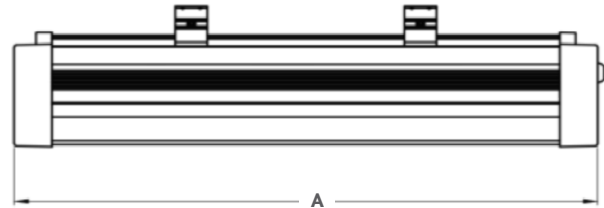
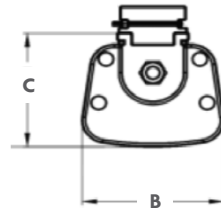
- Commercial, industrial or marine type applications such as parking garages, stairwells, docks, and subway stations.



## LED Linear Luminaire 4 FT TRI-PROOF VAPOR TIGHT

### GENERAL SPECIFICATIONS

**Input Voltage:** 120V-277V, 50/60Hz  
**Average Rated Life (L70):** 50,000 hours  
**THD:** <10%  
**Power Factor:** >0.9  
**Beam Angle:** 120°  
**CRI:** 80  
**Ambient Operating Temperature:** -40°F to 105°F  
**Unit Weight:** 4.6 lbs. standard, 7.3 lbs. with battery backup



Dimensions	A (in)	B (in)	C (in)
	47.24"	3.78"	3.27"

### SPECIFICATIONS / ORDER INFO

Catalog Number	Product Code	UPC	Watts	Lumens	LPW	Input Amps @120V	CCT (Kelvin)	DLC ID*	Case Qty
<b>F-VT4/50W/40K-86</b>	71055	751338023420	50W	6,500	130	.42/.2A	4000K	PLOY7QLDKHPD	1/6
<b>F-VT4/50W/50K-86</b>	71056	751338023437	50W	6,500	130	.42/.2A	5000K	PLV92VSEI3JJ	1/6
<b>With battery backup (≥90 minutes)</b>									
<b>F-VT4/50W/40K/EM-86</b>	71058	751338023475	50W	5,750	115	.42/.2A	4000K	PLOY7QLDKHPD	1/6
<b>F-VT4/50W/50K/EM-86</b>	71059	751338023482	50W	5,750	115	.42/.2A	5000K	PLV92VSEI3JJ	1/6
<b>Optional Suspension Mount Cable</b>									
<b>F-LED Cable 2PK</b>	72708 (2 cables per set)								
<b>Optional End-to-End Connector Kit</b>									
<b>F-VT Coupler</b>	71040 (includes End-to-End bracket and 10" connection cord)								
<b>Optional 10 Ft. Extended Connector Cord</b>									
<b>F-VT 10FT Cord</b>	71033								

### NOMENCLATURE

**Example: F-VT4/50W/50K/EM**  
**F=Fixture / F-VT4=LED Vapor Tight 4 Ft / 50W=50 Watt / 40K=4000K CCT / Blank=No Backup**  
**50K=5000K CCT / EM=Emergency Backup**

### ENERGY SAVINGS

	LED Watts	Suggested Fluorescent Equivalent	Energy Savings, Watts	Yearly Saving, \$	5 Year Savings, \$
<b>Based on 12 hours/day and .11/kwhr</b>					
F-VT4/50W/xxK	50W	96W	46W	\$22.16	\$110.80

#### NOTES:

\*DLC Primary Use Designation: Direct Linear Ambient Luminaires

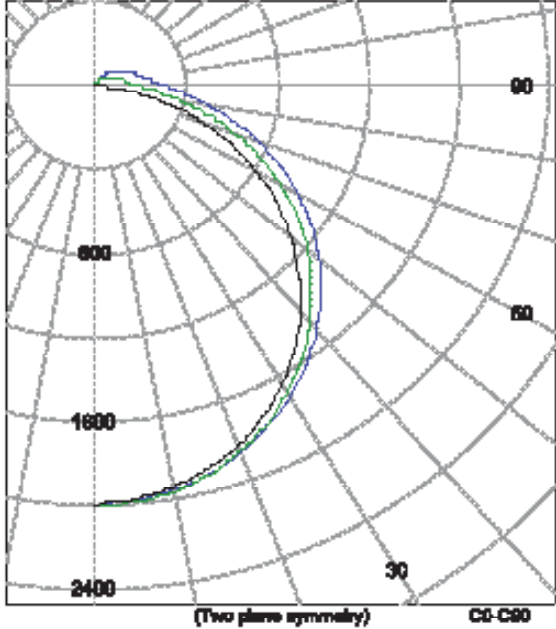
Specifications subject to change without prior notice. Replacement wattage shown depends on application and fixture.

This device complies with Part 15 of the FCC Rules. Operation is subject to the following two conditions: (1) this device may not cause harmful interference, and (2) this device must accept any interference received, including interference that may cause undesired operation.

 \*Item is rebate eligible in some regions. Eligibility and rebates must be verified by local utility provider.  
 For more information visit [www.topaz-usa.com/rebate-finder](http://www.topaz-usa.com/rebate-finder)

## LED Linear Luminaire 4 FT TRI-PROOF VAPOR TIGHT

Legend: C0-Black, C45-Green, C90-Blus (cd)



INTENSITY SUMMARY (cd)

Distance	C-Plane					Flux (lm)
	C0	C22.5	C45	C67.5	C90	
0.0	1994	1994	1994	1994	1994	
5.0	1976	1977	1982	1990	1991	199
10.0	1946	1948	1953	1963	1968	
15.0	1903	1906	1911	1921	1924	399
20.0	1848	1850	1855	1866	1869	
25.0	1787	1790	1794	1799	1799	614
30.0	1720	1723	1727	1731	1731	
35.0	1648	1650	1654	1658	1654	863
40.0	1569	1572	1575	1578	1570	
45.0	1484	1487	1490	1492	1480	1229
50.0	1393	1395	1398	1400	1386	
55.0	1296	1298	1300	1301	1286	1665
60.0	1193	1195	1197	1198	1181	
65.0	1084	1086	1088	1089	1070	2173
70.0	970	972	974	975	954	
75.0	851	853	855	856	833	2761
80.0	728	730	732	733	709	
85.0	601	603	605	606	580	3422
90.0	470	472	474	475	447	
95.0	336	338	340	341	311	4167
100.0	200	202	204	205	173	

ZONAL FLUX AND PERCENTAGES

Zone	Flux (lm)	% Lamp	% Luminaire
0-30	1641	N/A	23.3
0-40	2824	N/A	39.2
0-50	4008	N/A	55.2
0-60	5088	N/A	69.8
0-80	7644	N/A	105.8
0-90	10000	N/A	138.9
90-180	541	N/A	0.7
0-180	10000	N/A	100.0

Total Light Output = 6,000 lm

Spacing Criteria: 8-180 1.2  
Spacing Criteria: 90-270 1.3

Coefficients of Utilization - Zonal Cavity Method  
Elliptical Floor Cavity Reflectance 0.30

RC	30				45				60				75				90			
	70	80	90	1.0	70	80	90	1.0	70	80	90	1.0	70	80	90	1.0	70	80	90	1.0
0	117	117	117	117	118	118	118	118	119	119	119	119	120	120	120	120	121	121	121	121
1	106	106	106	106	107	107	107	107	108	108	108	108	109	109	109	109	110	110	110	110
2	96	96	96	96	97	97	97	97	98	98	98	98	99	99	99	99	100	100	100	100
3	87	87	87	87	88	88	88	88	89	89	89	89	90	90	90	90	91	91	91	91
4	79	79	79	79	80	80	80	80	81	81	81	81	82	82	82	82	83	83	83	83
5	73	73	73	73	74	74	74	74	75	75	75	75	76	76	76	76	77	77	77	77
6	67	67	67	67	68	68	68	68	69	69	69	69	70	70	70	70	71	71	71	71
7	62	62	62	62	63	63	63	63	64	64	64	64	65	65	65	65	66	66	66	66
8	58	58	58	58	59	59	59	59	60	60	60	60	61	61	61	61	62	62	62	62
9	54	54	54	54	55	55	55	55	56	56	56	56	57	57	57	57	58	58	58	58
10	51	51	51	51	52	52	52	52	53	53	53	53	54	54	54	54	55	55	55	55

AVERAGE LUMINANCE (cd / m<sup>2</sup>)

Distance	C0	C45	C90
45.0	10064	14485	14399
60.0	14999	19379	19377
65.0	13087	19281	12286
75.0	10728	10056	10889
85.0	4714	6257	10012

Circle of Light Plot

