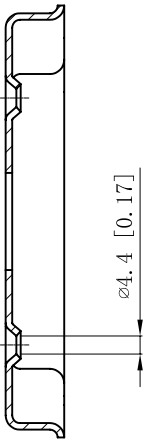
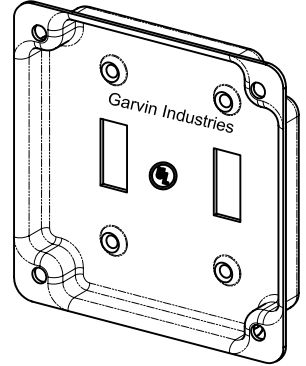
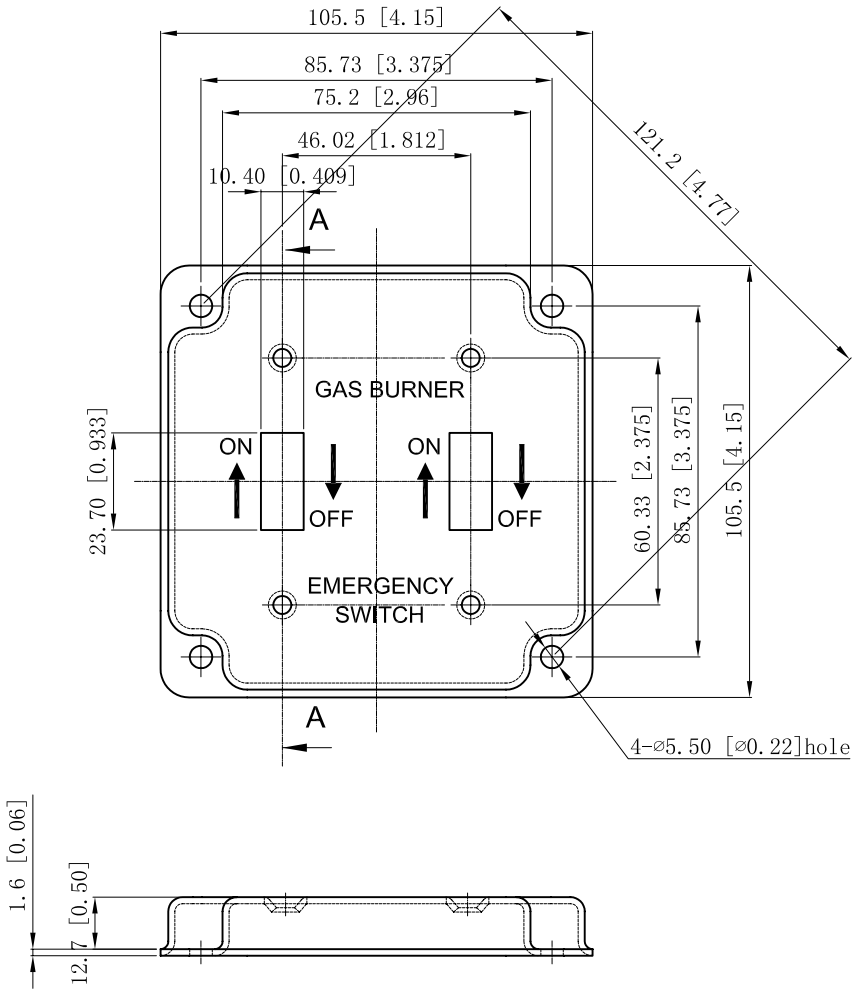


SIDES	BOTTOM
4 PCS #8-32×3/8 Pack In Poly-Bag Separately	
Material:Steel-0.0625"-G60 Powdre Coating Red	



VIEW A



DESCRIPTION
TRADE REFERENCE TERMS

STANDARD PACKING
25/100 PCS

This data sheet is for reference only .GARVIN INDUSTRIES reserves the right to make changes to the design without prior notice.

GARVIN INDUSTRIES		
TITLE 4" SQUARE RED EMERGENCY GAS BURNER SWITCH PLATE. 1-TOGGLE WITH ON/OFF		
SIZE A4	DWG NO. BP-1936	REV A
DATA SHEET		