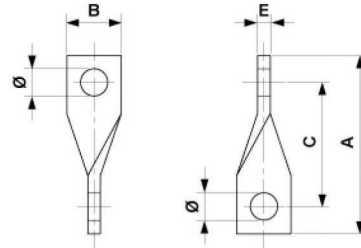


# Twisted link

Item number E0116-02



## Dimensions

C: 80 mm  
B: 40 mm  
 $\varnothing$ : 18 mm  
E: 12 mm  
A: 120 mm

## Material and weight

Weight: 0.400 kg  
Material: STL HDG

## Loads

Breaking load: 65 kN



**Southwire™**



A COLAS RAIL COMPANY

Contact Us: [Transit@southwire.com](mailto:Transit@southwire.com)