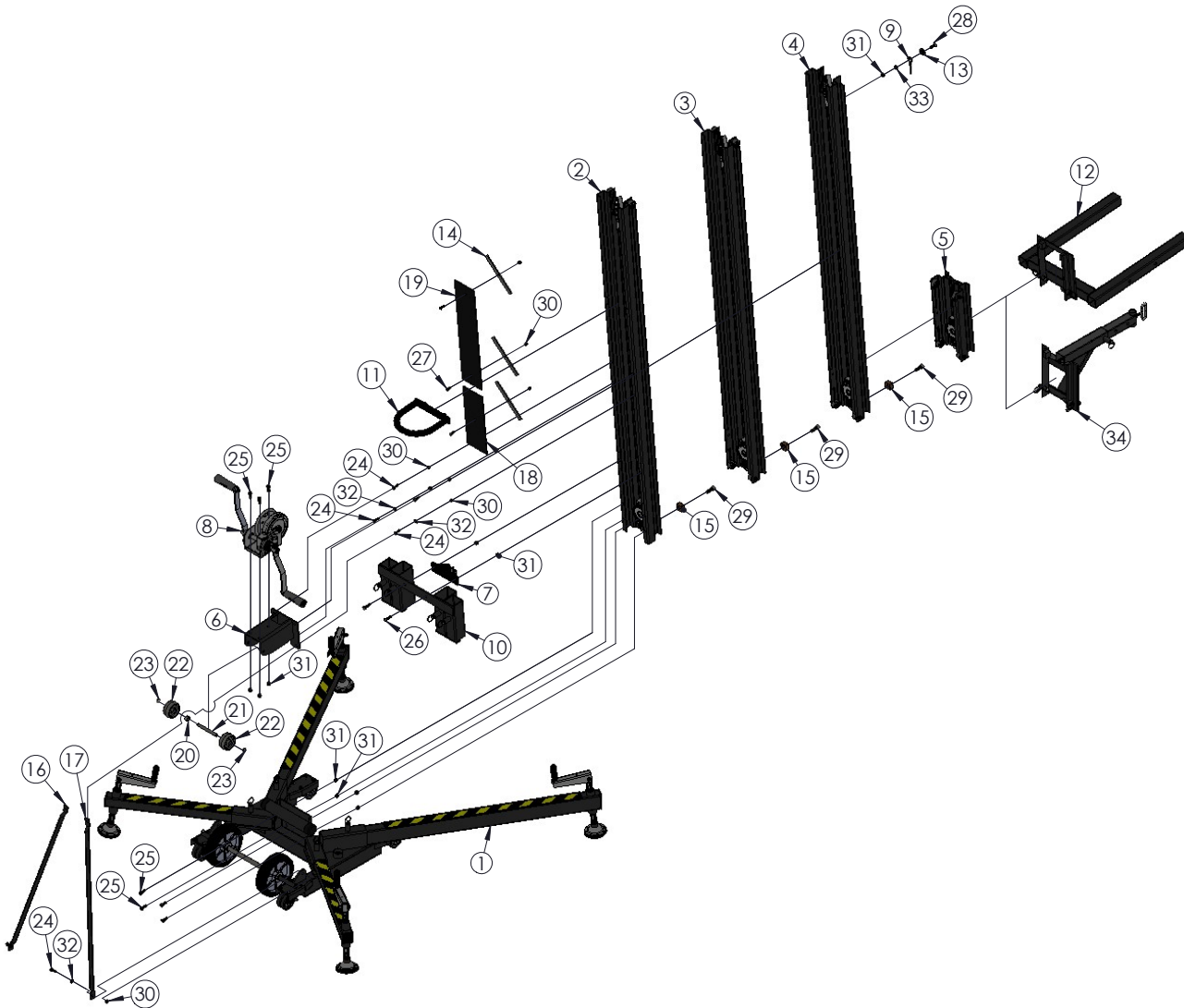
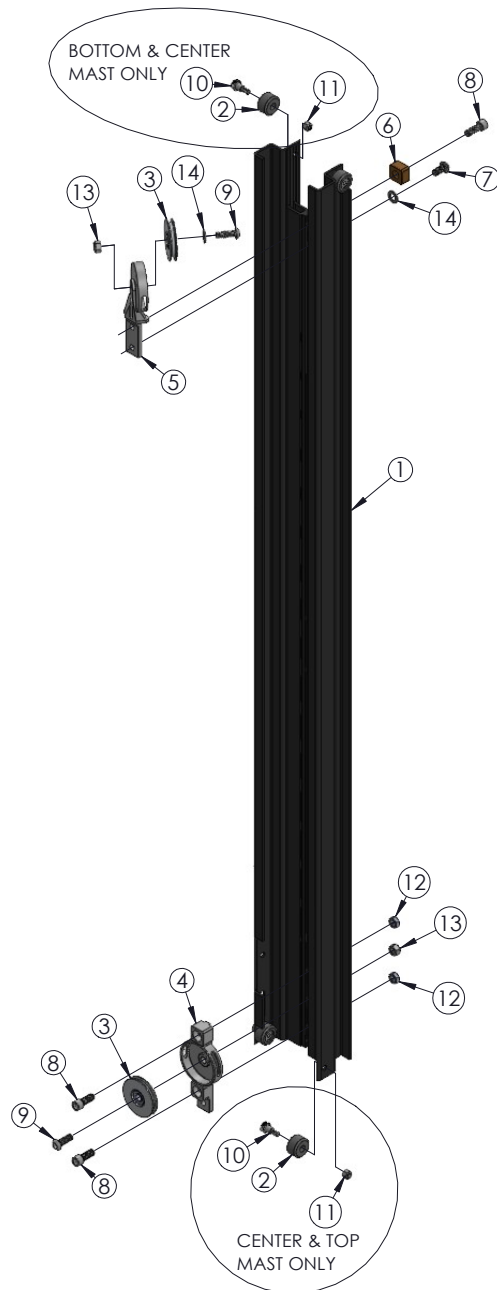


# EVENTER 16 ASSEMBLY



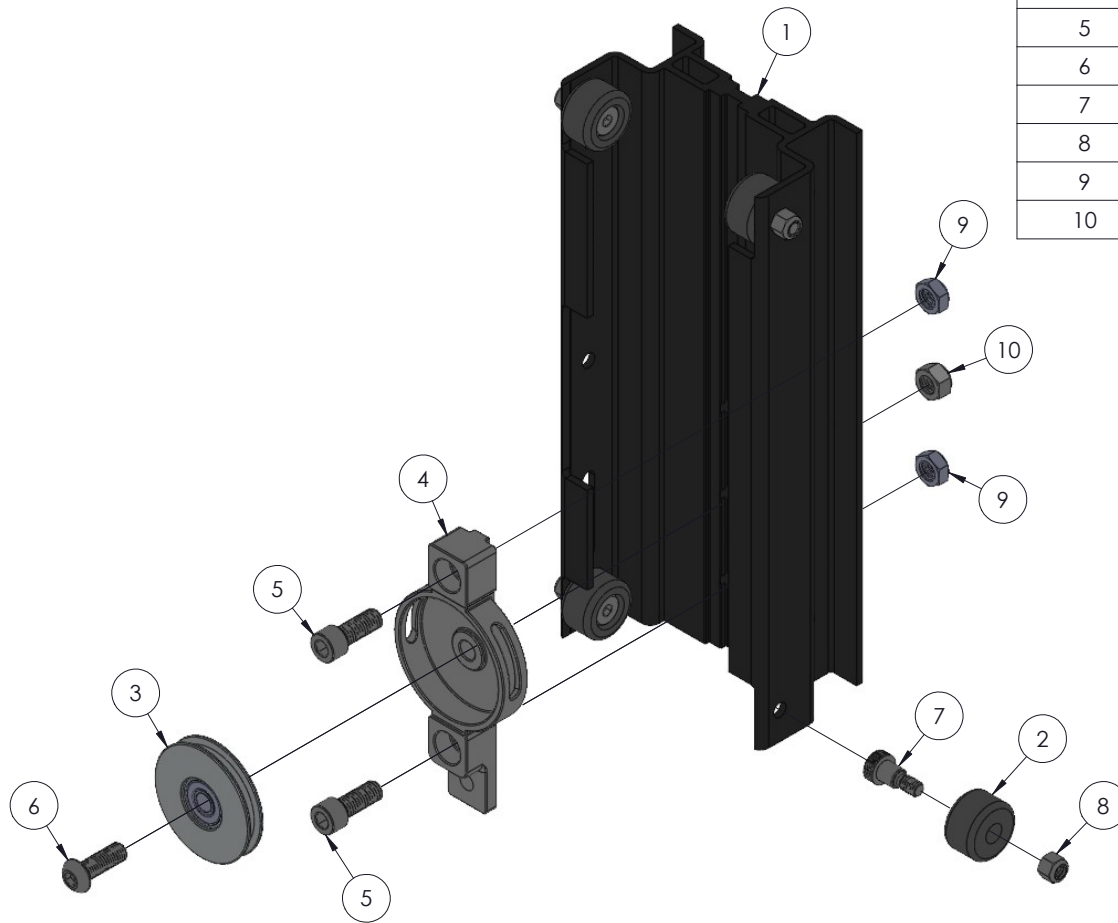
ITEM NO.	PART NUMBER	DESCRIPTION	QTY.
1	784716	BASE ASSY. 2416 EVENTER	1
2	784725-BLK	BOTTOM MAST ASSY. 2416 BLK	1
3	784735-BLK	CENTER MAST ASSY. 2416 BLACK	1
4	784745-BLK	TOP MAST ASSY. 2416 BLACK	1
5	784765-BLK	CARRIAGE ASSY. EVENTER 16 BLACK	1
6	784775-BLK	WINCH MOUNTING WELDMENT	1
7	784780-BLK	SPREADER PLATE ASSY EVENTER 16	1
8	784785	WINCH ASSEMBLY, 2400 LIFT	1
9	784795	LOAD LINE EVENTER 16	1
10	784825	LEG STORAGE ASSY. EVENTER 16	1
11	784875	HANDLE ASSY. EVENTER 16	1
12	784757	FORK ASSEMBLY EVENTER 16	1
13	782910	ROPE RET. WASHER	1
14	783545	STRAP	3
15	783575	STOP BLOCK	3
16	784251-BLK	MAST BRACE LEFT BLACK	1
17	784252-BLK	MAST BRACE RIGHT BLACK	1
18	784307	MAST COVER, SHORT 2200 LIFT	1
19	784305	MAST COVER LONG	1
20	784394	SPACER, PULLEY 1/2"	1
21	784778	SHAFT, WHEEL 2400 LIFT	1
22	779012	WHEEL, POLYOLEFIN 3"	2
23	774053	COTTER, CIRCLE Z/P 0.048 X 0.75"	2
24	771052	SCREW, HHC 5/16-18 X 1 PLTD	6
25	771107	SCREW, HHC 3/8-16 X 1	7
26	771060	SCREW, HHC 3/8-16X1.25"LN	2
27	771239	SCREW, BHC 5/16-18 X 7/8"	3
28	771260	SCREW, FHSC 3/8-16 X 1.25"LN	1
29	771261	SCREW, SHC 1/2-13 X 1-1/4	3
30	772502	NUT, INSERT JAM 5/16-18	9
31	772355	NUT, INSERT LOCK 3/8-16	10
32	773042	WASHER, FLAT 5/16	4
33	773022	WASHER, FLAT 3/8 SAE HARDENED	1
34	784880	BOOM ASSEMBLY EVENTER 16	1

# CENTER MAST ASSEMBLY



ITEM NO.	PART NUMBER	DESCRIPTION	QTY.
1	784726-BLK	BOTTOM MAST 16 EVENTER BLACK	1
1	784736-BLK	CENTER MAST MACHINED 2412 LIFT	1
3	784746-BLK	TOP MAST 16 EVENTER BLACK	1
2	784722	MAST ROLLER	4
3	784724	PULLEY ASSEMBLY 3"	2
4	784705	PULLEY COVER, 2400 SERIES LIFT	1
5	784710	PULLEY MOUNT, 2400 SERIES LIFT	1
6	783575	STOP BLOCK	1
7	771259	SCREW, BHSC 1/2-13 X 1.0"LN	1
8	771261	SCREW, SHC 1/2-13 X 1-1/4	3
9	771263	SCREW, BHC M12-1.75 X 35 MM	2
10	771350	SCREW, SHOULDER 1/2 X 1/2	4
11	772350	NUT, INSERT JAM 3/8 - 16	4
12	772358	NUT, INSERT JAM 1/2 - 13	2
13	772505	NUT, INSERT JAM M12	2
14	773096	WASHER, FLAT M12	2

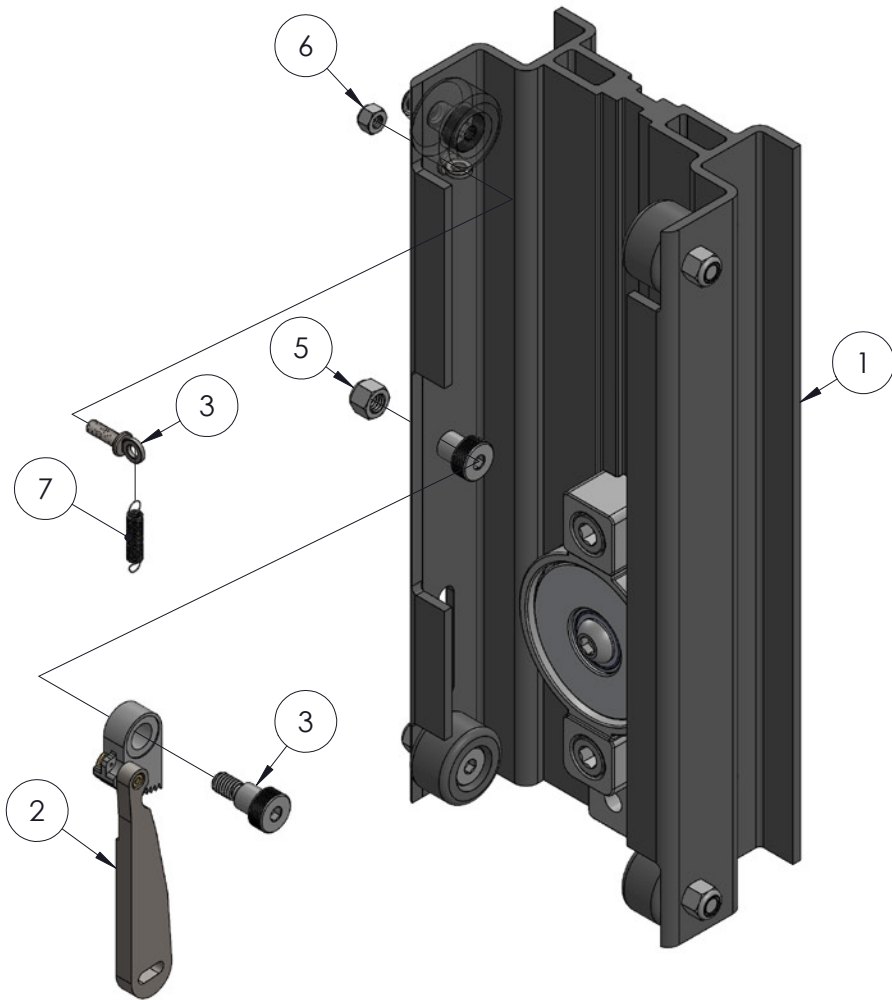
# BLACK CARRIAGE ASSEMBLY



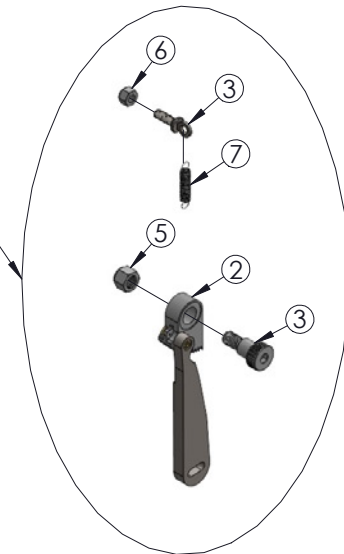
ITEM NO.	PART NUMBER	DESCRIPTION	QTY.
1	784766-BLK	CARRIAGE MACHINED EVENTER 16	1
2	784722	MAST ROLLER	4
3	784724	PULLEY ASSEMBLY 3"	1
4	784705	PULLEY COVER, 2400 SERIES LIFT	1
5	771261	SCREW, SHC 1/2-13 X 1-1/4	2
6	771263	SCREW, BHC M12-1.75 X 35 MM	1
7	771350	SCREW, SHOULDER 1/2 X 1/2	4
8	772350	NUT, INSERT JAM 3/8 - 16	4
9	772358	NUT, INSERT JAM 1/2 - 13	2
10	772505	NUT, INSERT JAM M12	1

# EVENTER 16 BRAKE KIT ASSEMBLY (784755)

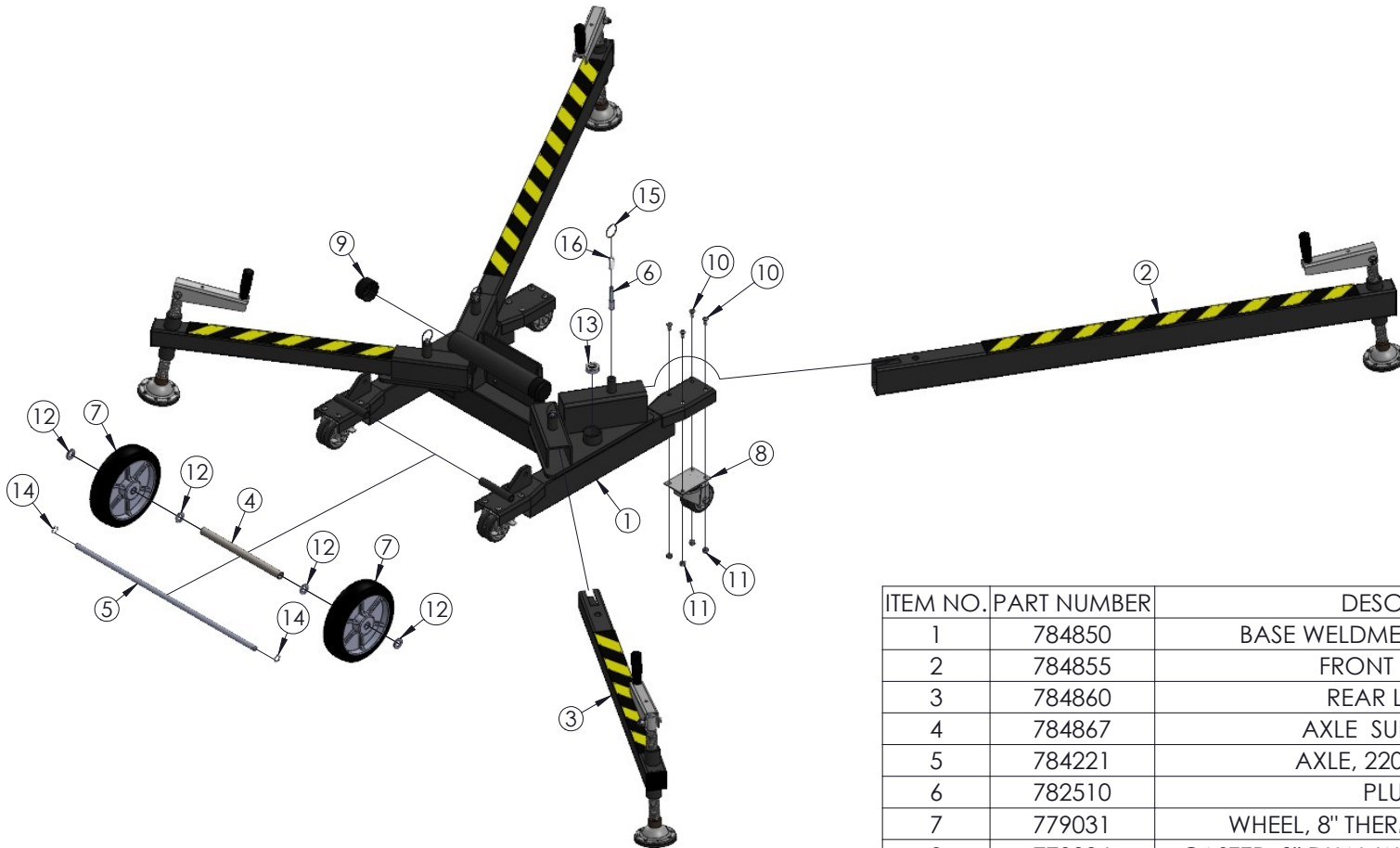
ITEM NO.	PART NUMBER	DESCRIPTION	QTY.
1	784765-BLK	CARRAGE ASSEMBLY <b>(NOT INCLUDED)</b>	1
2	784692	MAST BRAKE ASSEMBLY	1
3	771350	SCREW, SHOULDER 1/2 X 1/2	1
4	779900	SCREW, ADJUSTING (OHIO ES2112) EYE BOLT	1
5	772350	NUT, INSERT JAM 3/8 - 16	1
6	772076	NUT, INSERT LOCK 1/4-20	1
7	783530	BRAKE SPRING	1



2400/EVENTER16  
BRAKE KIT  
PN: 784755

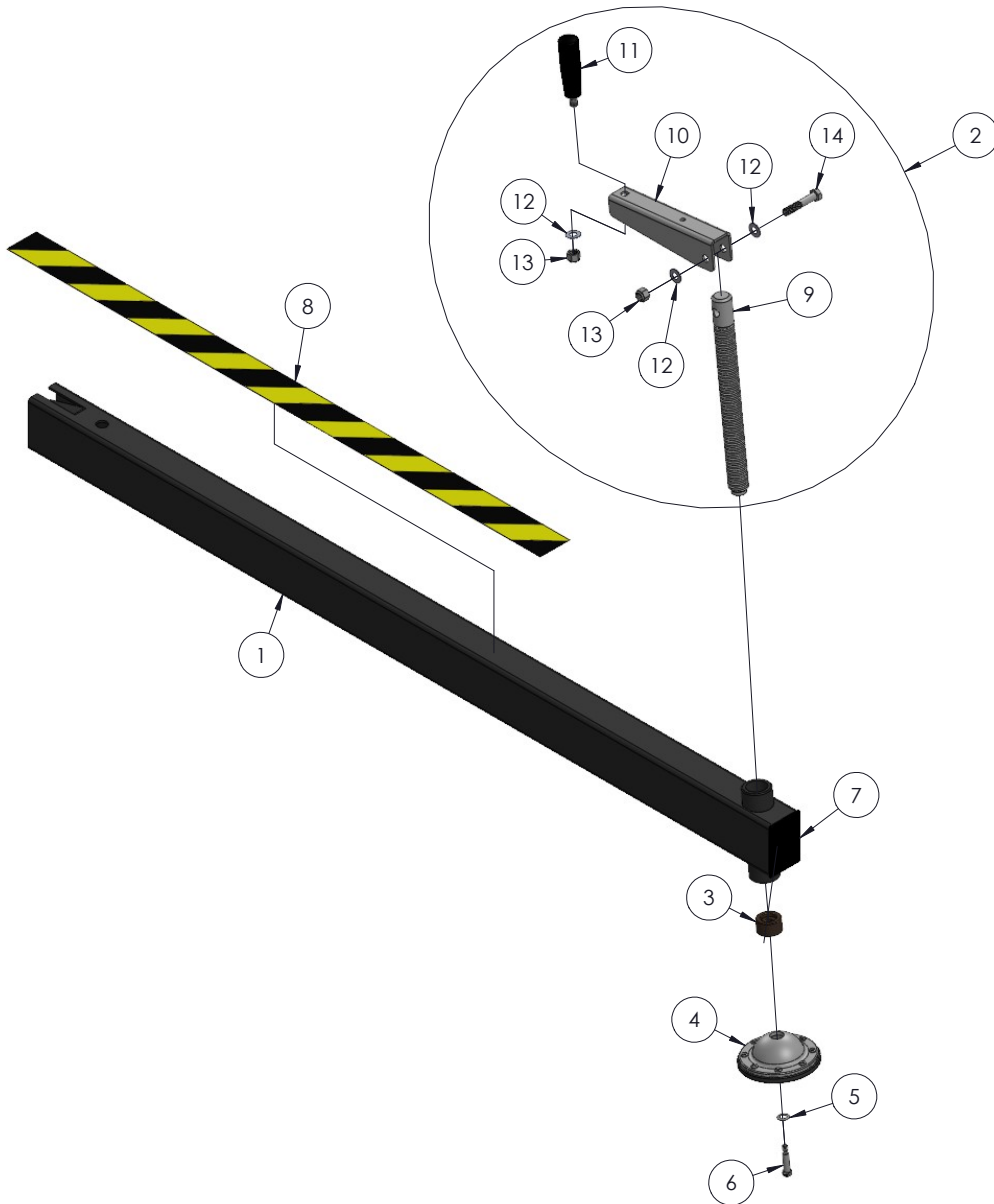


# BASE ASSEMBLY



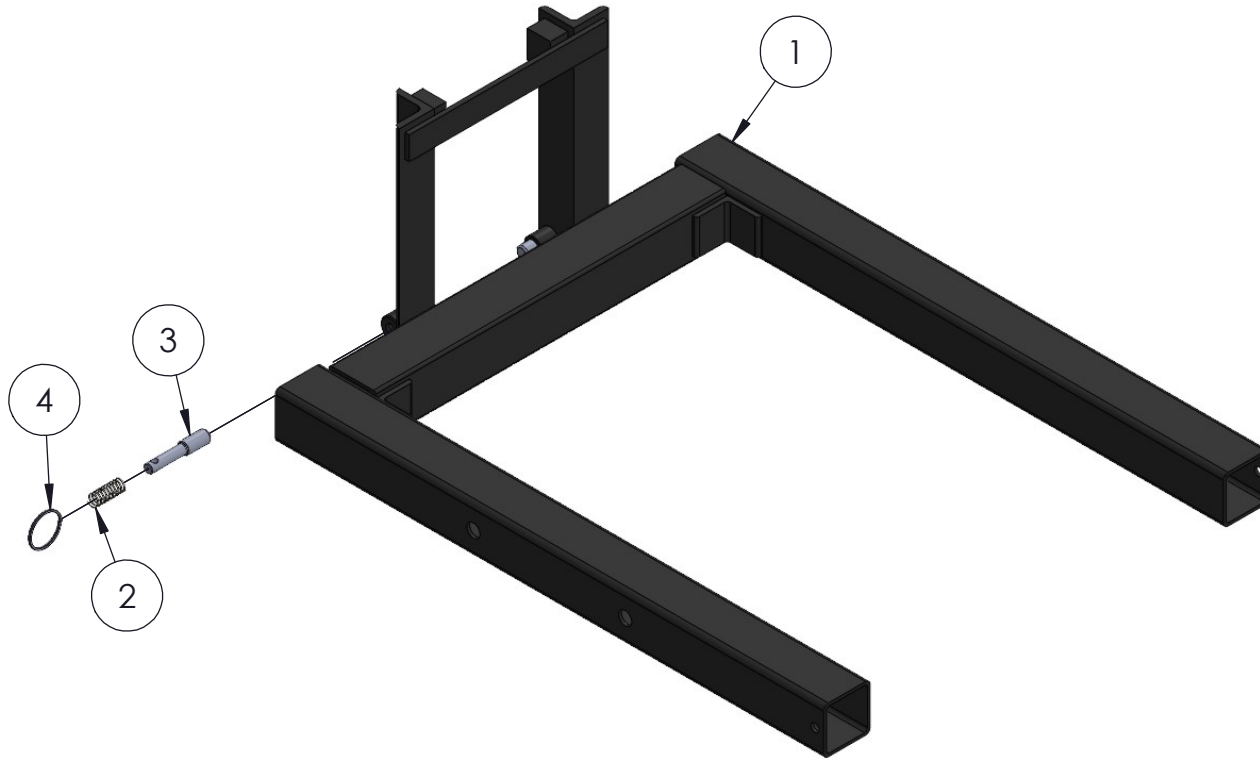
ITEM NO.	PART NUMBER	DESCRIPTION	QTY.
1	784850	BASE WELDMENT 2416 EVENTER	1
2	784855	FRONT LEG ASSY.	2
3	784860	REAR LEG ASSY.	2
4	784867	AXLE SUPPORT TUBE	1
5	784221	AXLE, 2200 SERIES LIFT	1
6	782510	PLUNGER	4
7	779031	WHEEL, 8" THERMOPLASTIC GRAY	2
8	779036	CASTER, 3" DUAL WHEEL SWIVEL W/BRAKE	4
9	779905	CAP, 2" OD TUBE, BLACK	2
10	771049	SCREW, BHC 5/16-18 X .625"LN	16
11	772502	NUT, INSERT JAM 5/16-18	16
12	773094	WASHER, FLAT 1/2 SAE	4
13	773400	LEVEL, CIRCULAR BUBBLE	1
14	774053	COTTER, CIRCLE Z/P 0.048 X 0.75"	2
15	775110	SPLIT RING 1-1/4" NICKEL PLATED	4
16	776212	SPRING, #C0480-042-1250-M	4

# FRONT LEG ASSEMBLY



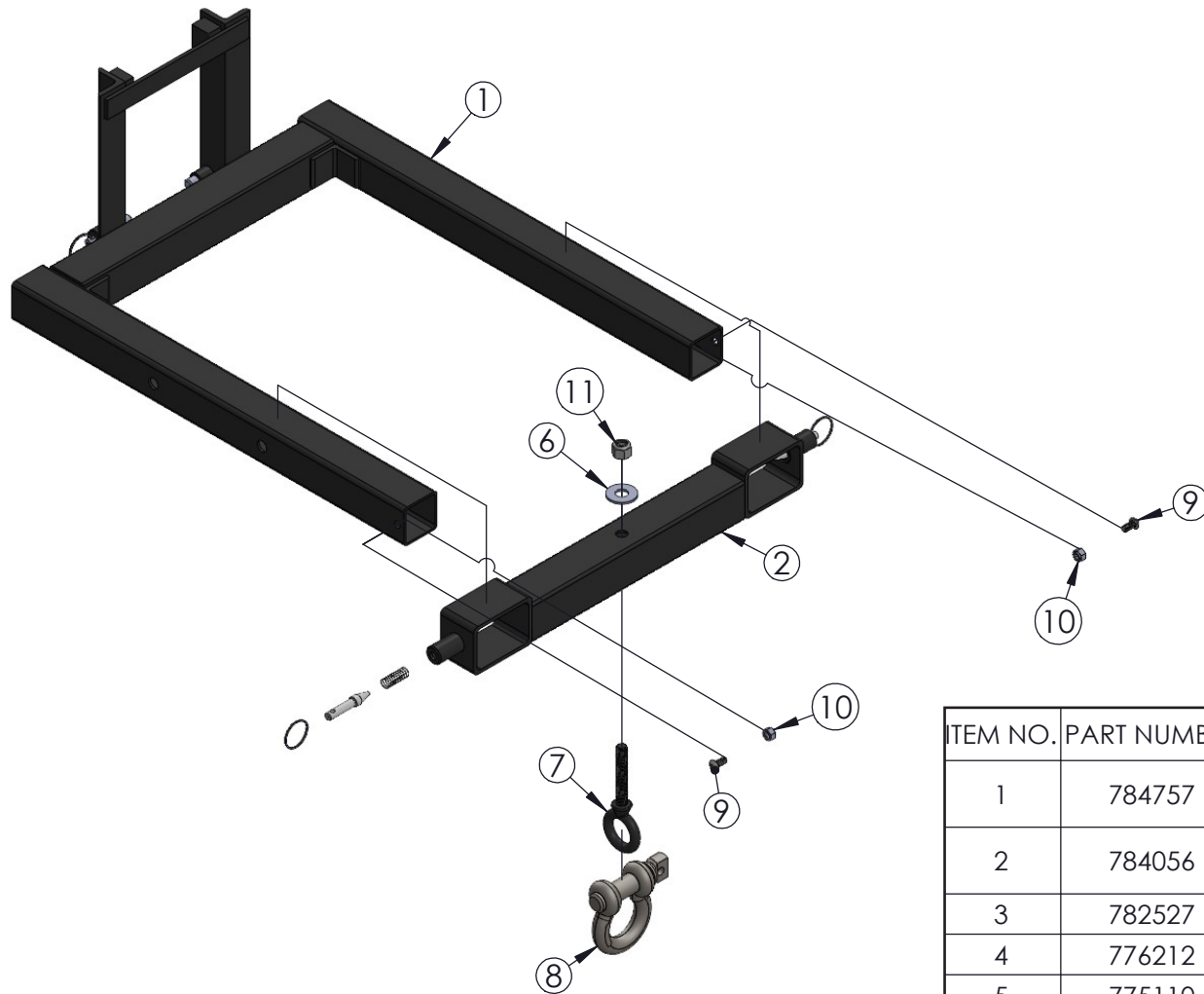
ITEM NO.	PART NUMBER	DESCRIPTION	QTY.
1	784856	LEG LEVELING FRONT 2416 EVENTER	1
1	784861	LEG WELDMENT REAR 2416 EVENTER	1
2	784895	LEVELING SCREW ASSY, 2416 LIFT	1
3	783891	BUSHING, LEVELING SCREW	1
4	773402	LEVELING MOUNT, NON-SKID	1
5	773080	WASHER, CONICAL	1
6	771354	SCREW, SHOULDER 5/16 X 1	1
7	779931	CAP, 2x3" SQUARE TUBING, BLACK	1
7	779916	CAP, 2" SQUARE TUBING, BLACK	1
8	778352	TAP, 2" B/Y CAUTION STRIPE	1
9	784896	LEVELING SCREW, EVENTER 16	1
10	784897	HANDLE, LEVELING SCREW	1
11	774126	HANDLE, REVOLVING BLK PHENOLIC	1
12	773042	WASHER FL HARD .38	3
13	772355	NUT, INSERT LOCK 3/8-16	2
14	771112	SCREW, HHC 3/8-16 X 2.0	1

# FORK ASSEMBLY



ITEM NO.	PART NUMBER	DESCRIPTION	QTY.
1	784758	FORK WELDMENT EVENTER 16 BLACK	1
2	776212	SPRING, #C0480-042-1250-M	2
3	782510	PLUNGER	2
4	775110	SPLIT RING 1-1/4" NICKEL PLATED	2

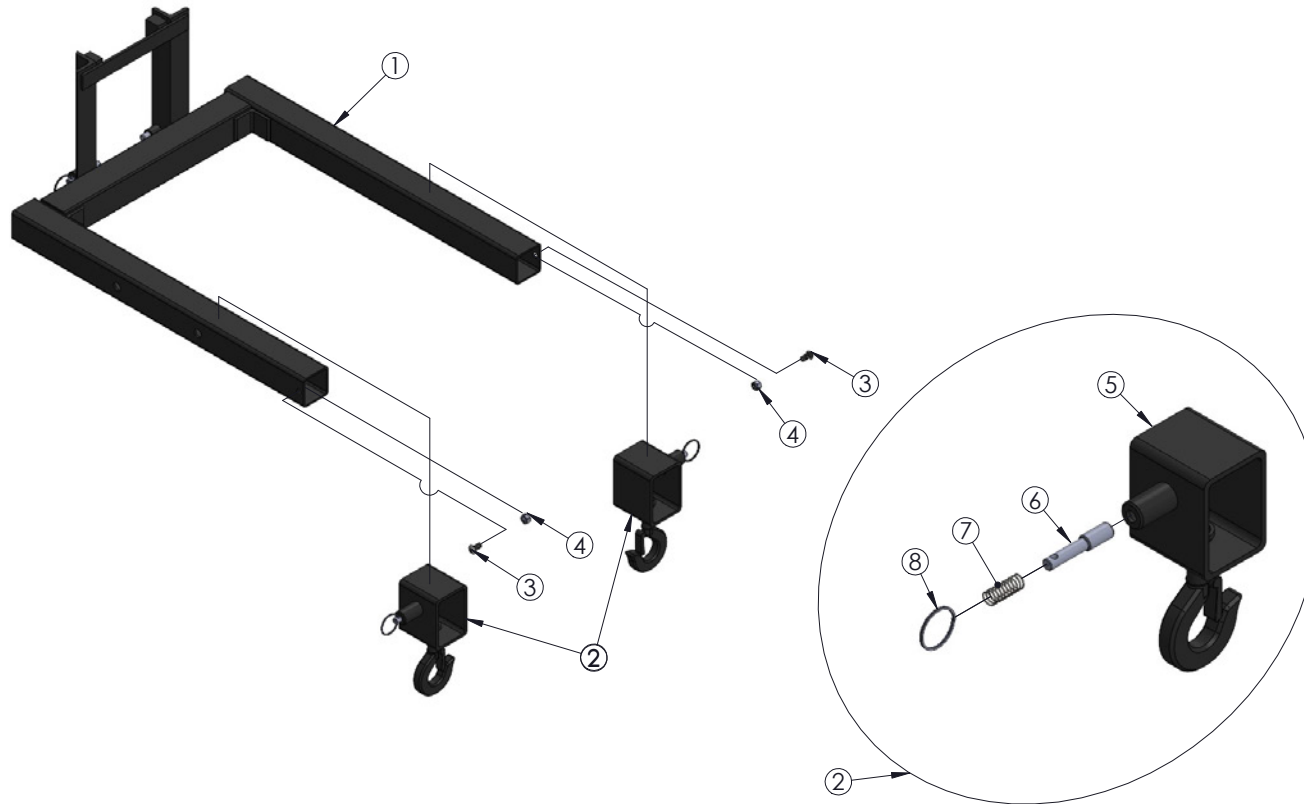
# EVENTER 16 SOUND BAR ARRAY ASSEMBLY



TEM NO.	PART NUMBER	DESCRIPTION	QTY.
1	784757	FORK ASSEMBLY EVENTER 16 <b>(NOT INCLUDED)</b>	
2	784056	EVENTER 16 SOUND BAR ARRAY WELDMENT	1
3	782527	PLUNGER, RAB BASE	2
4	776212	SPRING, #C0480-042-1250-M	2
5	775110	SPLIT RING 1-1/4" NICKEL PLATED	2
6	773060	WASHER, FLAT 1/2 USS	1
7	784063	STEEL EYEBOLT W/SHOULDER, BLACK	1
8	779416	SCREW, PIN ANCHOR SHACKLE 0.75"	1
9	771049	SCREW, BHC 5/16-18 X .625"LN	2
10	772502	NUT, INSERT JAM 5/16-18	2
11	772357	NUT, INSERT LOCK 1/2 - 13	1



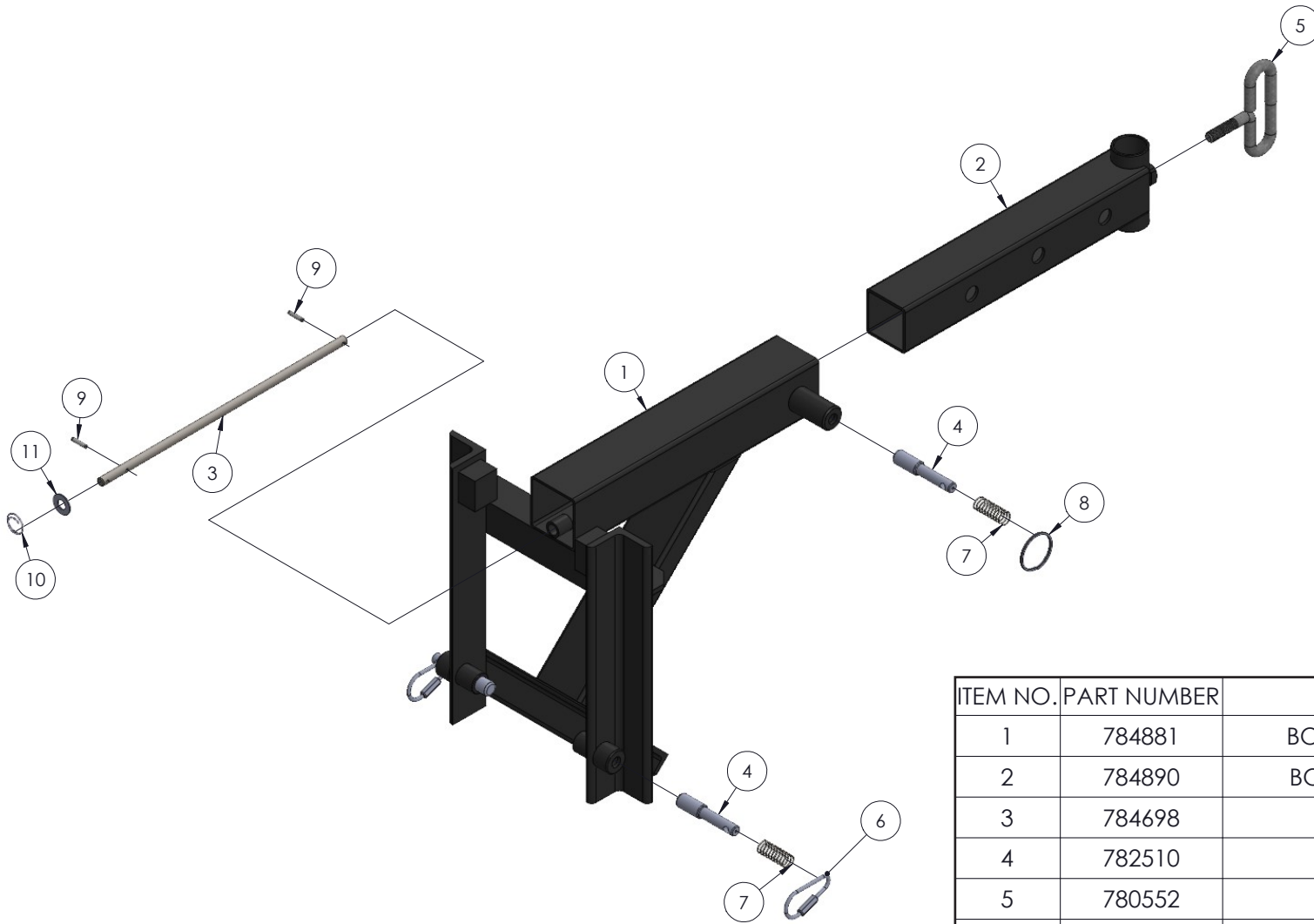
# HOOK BLOCK KIT ASSEMBLY



1

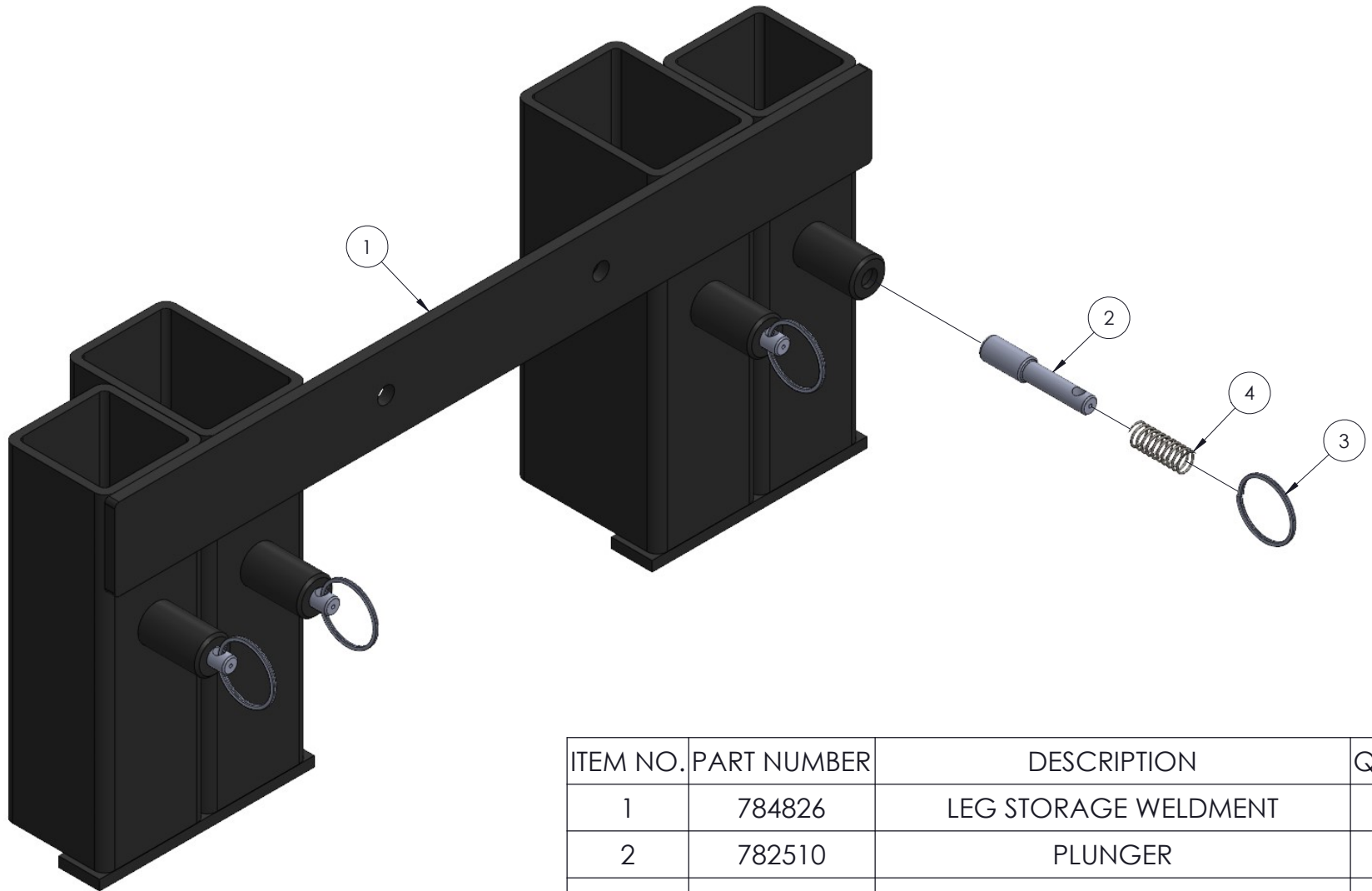
ITEM NO.	PART NUMBER	DESCRIPTION	QTY.
1	784757	FORK ASSEMBLY EVENTER 16 <b>(NOT INCLUDED)</b>	1
2	783672	HOOK BLOCK ASSEMBLY	2
3	771049	SCREW, BHC 5/16-18 X .625"LN	2
4	772502	NUT, INSERT JAM 5/16-18	2
5	783641	HOOK BLOCK WELDMENT	1
6	782510	PLUNGER	1
7	776212	SPRING, #C0480-042-1250-M	1
8	775110	SPLIT RING 1-1/4" NICKEL PLATED	1

# BOOM ASSEMBLY



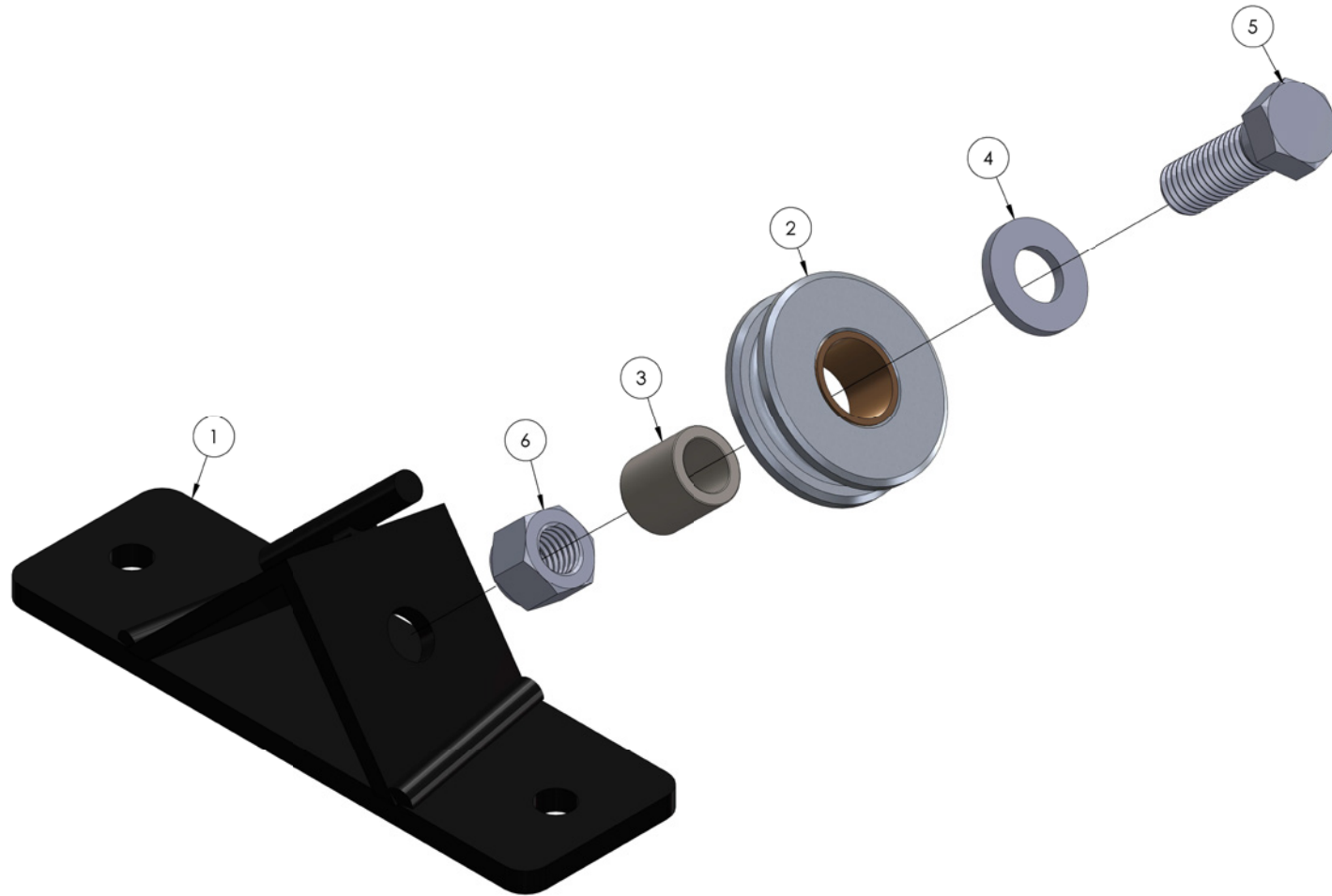
ITEM NO.	PART NUMBER	DESCRIPTION	QTY.
1	784881	BOOM WELDMENT OUTER	1
2	784890	BOOM WELDMENT INNER	1
3	784698	LIMIT ROD 2400 LIFT	1
4	782510	PLUNGER	3
5	780552	SETSCREW C-110W	1
6	779317	RAPID LINK, PEAR SHAPED -1/8"	2
7	776212	SPRING, #C0480-042-1250-M	3
8	775110	SPLIT RING 1-1/4" NICKEL PLATED	1
9	774092	PIN, ROLL 1/8 X 0.625"	2
10	774053	COTTER, CIRCLE Z/P 0.048 X 0.75"	1
11	773042	WASHER, FLAT 5/16	1

# LEG STORAGE ASSEMBLY



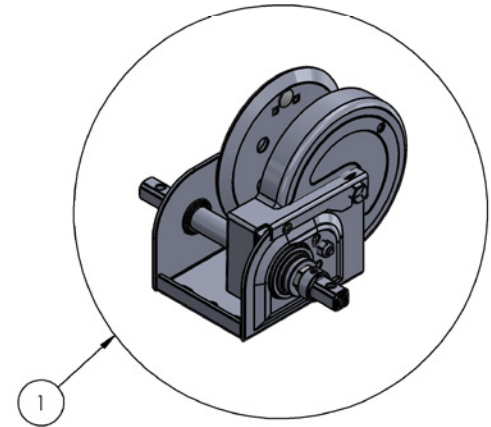
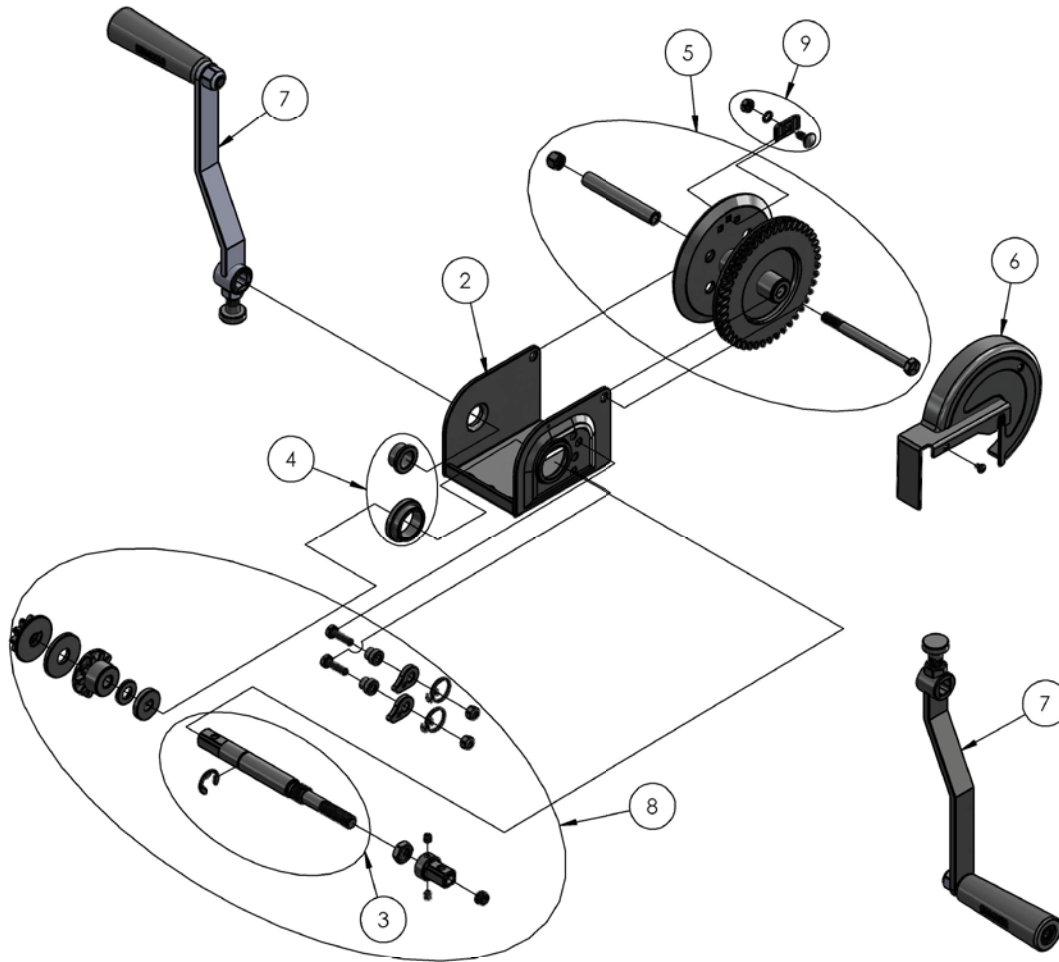
ITEM NO.	PART NUMBER	DESCRIPTION	QTY.
1	784826	LEG STORAGE WELDMENT	1
2	782510	PLUNGER	4
3	775110	SPLIT RING 1-1/4" NICKEL PLATED	4
4	776212	SPRING, #C0480-042-1250-M	4

# BLACK SPREADER PLATE ASSEMBLY



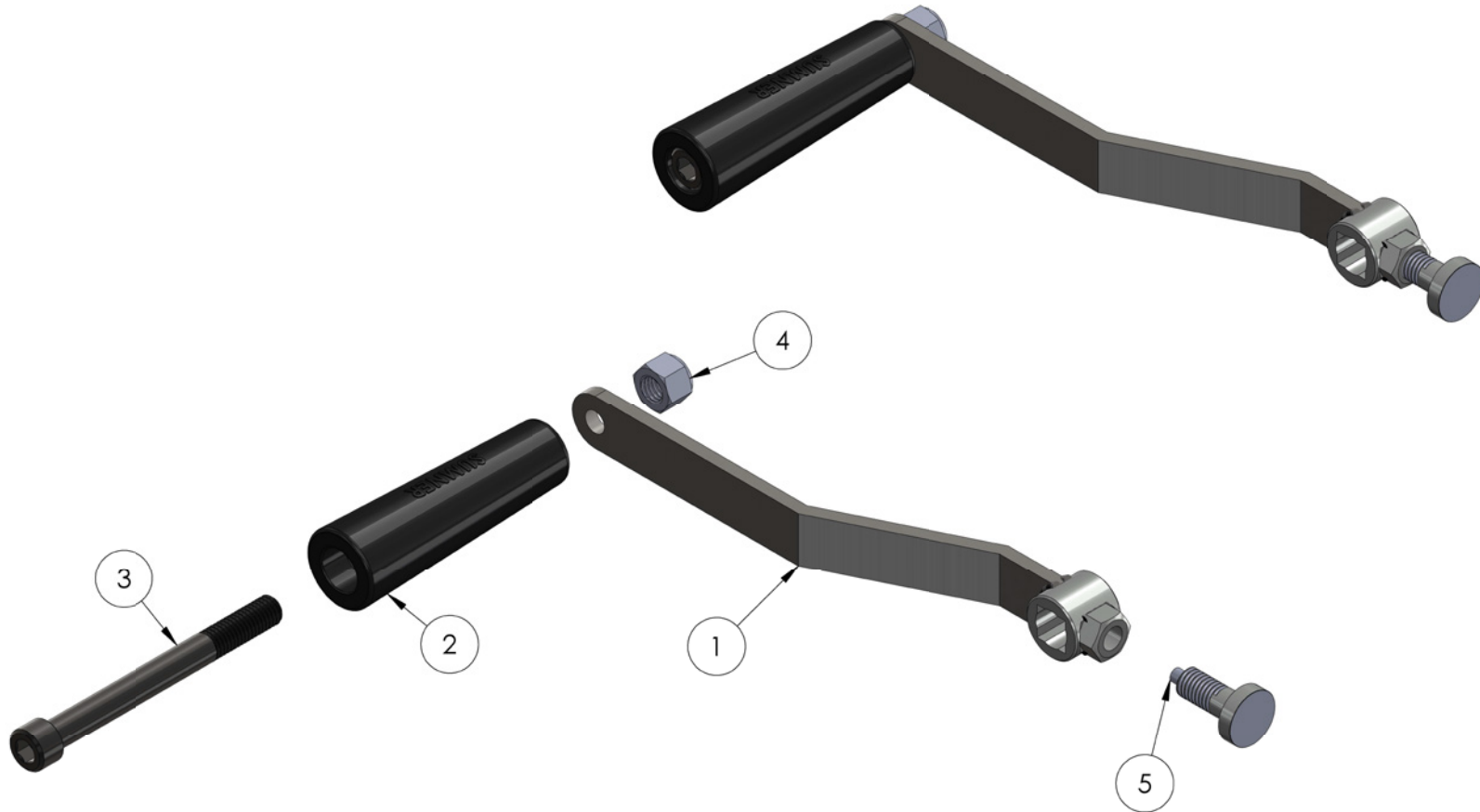
ITEM NO.	PART NUMBER	DESCRIPTION	QTY.
1	784781-BLK	SPREADER PLATE WELDMENT BLACK	1
2	780025	SHEAVE, RAB-222 (2") Z-22	1
3	782960	ROLLER SHAFT	1
4	773094	WASHER, FLAT 1/2 SAE	1
5	771120	SCREW, HHC 1/2-13 x 1.5" LN	1
6	772358	NUT, INSERT JAM 1/2 -13	1

# WINCH ASSEMBLY



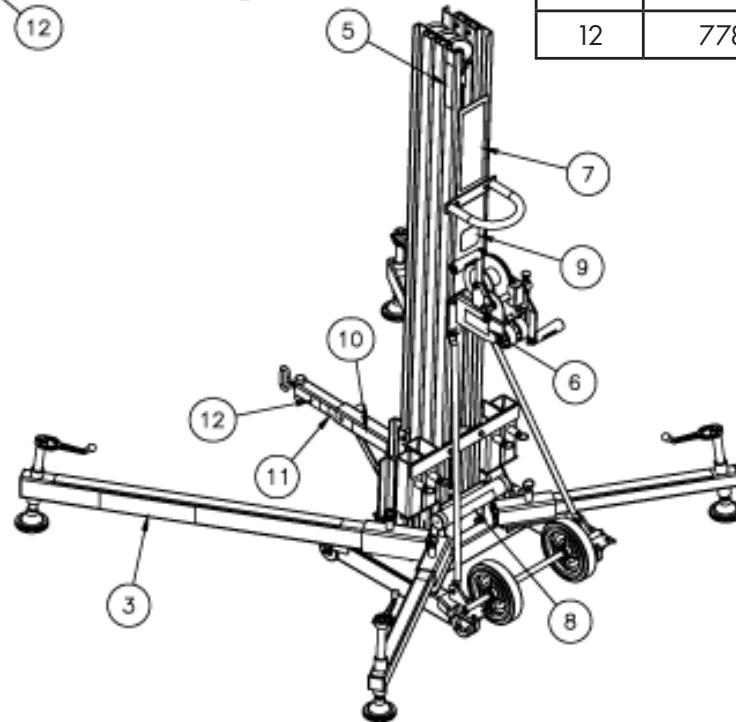
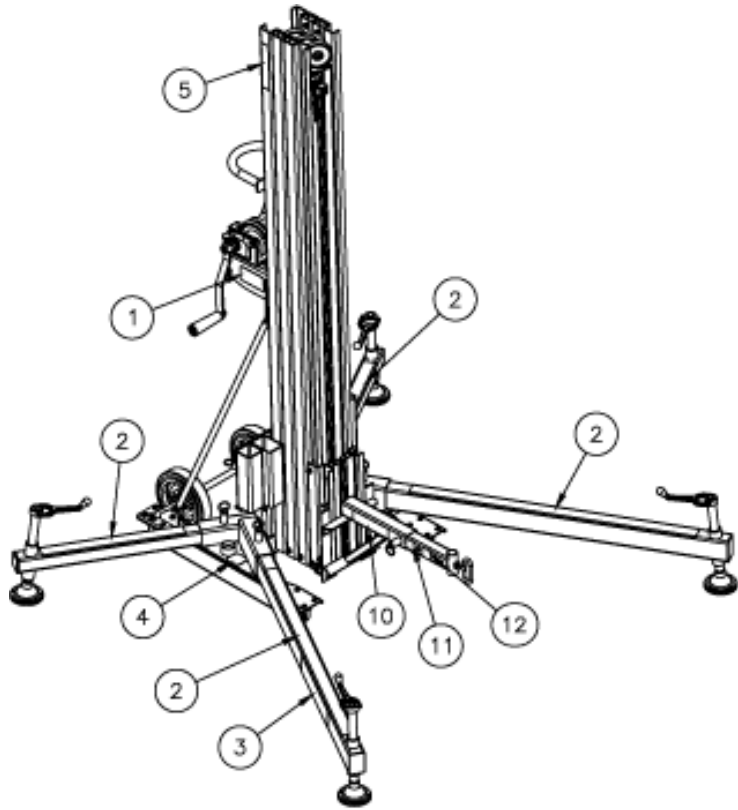
ITEM NO.	PART NUMBER	DESCRIPTION	QTY.
1	784785	WINCH ASSEMBLY NEW, 2400 LIFT W/O HANDLE	1
2	2400 WINCH HOUSING	<b>NOT FOR SALE</b>	1
3	785957	WINCH SHAFT KIT, 2400 LIFT (NEW THREAD)	1
4	785958	WINCH HOUSING BEARINGS, 2400 LIFT	1
5	785960	WINCH DRUM W/SHAFT, 2400 LIFT	1
6	785962	WINCH COVER, 2400 LIFT	1
7	783757	WINCH HANDLE	2
8	784841	WINCH TWO HANDLE REPLACEMENT KIT	1
9	785968	CABLE KEEPER KIT, 2400 LIFT	1

# WINCH HANDLE ASSEMBLY



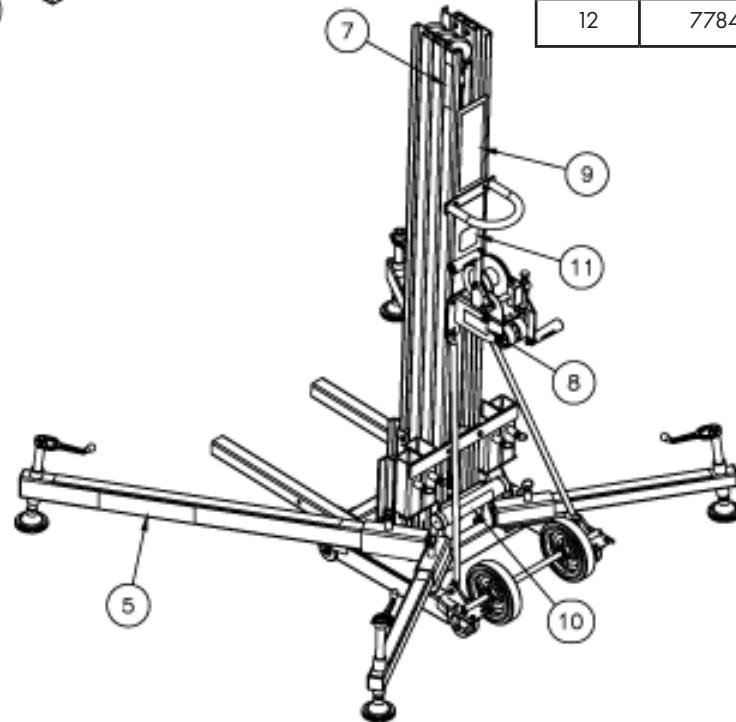
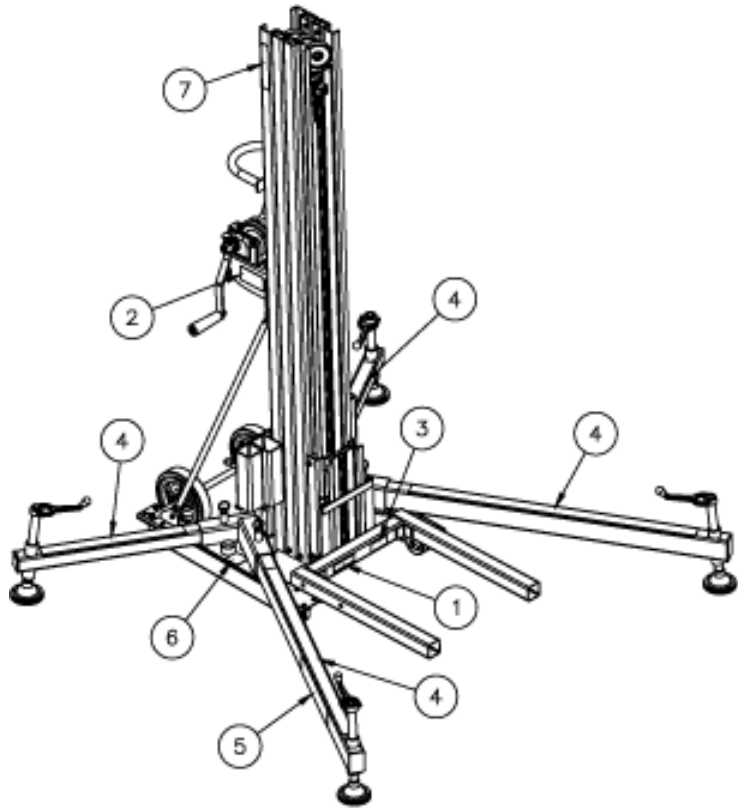
ITEM NO.	PART NUMBER	DESCRIPTION	QTY.
1	783756	WINCH HANDLE WELDMENT	1
2	780182	WINCH HANDLE SLEEVE	1
3	771254	SCREW, SHC 1/2 -13 X 5"LN	1
4	772358	NUT, INSERT JAM 1/2 -13	1
5	774180	SPRING PLUNGER,M 1/4 DIA.	1

# EVENTER 16 LIFT WITH BOOM LABEL KIT



ITEM	PART NUMBER	DESCRIPTION	QTY.
1	778346	LABEL, WINCH RAISE/LOWER	1
2	778352	TAPE, 2" B/Y CAUTION STRIPE	1
3	778355	LABEL, SUMNER W/BLK BACKGROUND	2
4	778356	LABEL, WARNING "LEVEL PRIOR."	1
5	778446	LABEL, MODEL EVENTER 16	2
6		778448 - LABEL, SERIAL NO. EVENTER 16 (NOT AVAILABLE FOR SALE)	1
7	778458	LABEL, LARGE WARNING 2200 LIFT	1
8	778906	LABEL, OP MANUAL - LIFT, READ B4	1
9	778920	LABEL, CAUTION CARRIAGE LATCH	1
10	778480	LABEL, SUMNER EVENTER 16 BOOM	2
11	778481	LABEL, DO NOT EXCEED 350	2
12	778482	LABEL, DO NOT EXCEED 400	2

# EVENTER 16 LIFT WITH FORK LABEL KIT



ITEM	PART NUMBER	DESCRIPTION	QTY.
1	778339	LABEL, CARRIAGE LATCH WARNING	1
2	778346	LABEL, WINCH RAISE/LOWER	1
3	778347	LABEL, NO RIDERS WARNING	1
4	778352	TAPE, 2" B/Y CAUTION STRIPE	1
5	778355	LABEL, SUMNER W/BLK BACKGROUND	2
6	778356	LABEL, WARNING "LEVEL PRIOR."	1
7	778446	LABEL, MODEL EVENTER 16	2
8		778448 - LABEL, SERIAL NO. 2416 EVENTER (NOT AVAILABLE FOR SALE)	1
9	778458	LABEL, LARGE WARNING 2200 LIFT	1
10	778906	LABEL, OP MANUAL - LIFT, READ B4	1
11	778920	LABEL, CAUTION CARRIAGE LATCH	1
12	778482	LABEL, DO NOT EXCEED 400	2