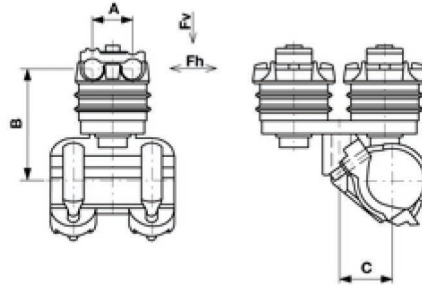
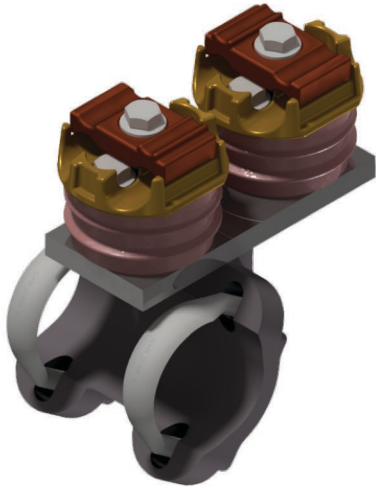


Messenger cable suspension double, insulated, rotatable, Reinforced, to pipe 2", cable Ø max. 21 mm

Item number D3117-01



Dimensions

B: 135 mm
A: 49 mm
C: 61.9 mm

Material and weight

Material: Al/SST/Synth.

Loads

Breaking load F_h : ± 28 kN
Breaking load F_v : ± 19 kN

Specification

Operating voltage: max. 1500 V DC, max. 1000 V AC

Comments

- The installation side of the messenger cable has to be selected so that the lateral force caused by the curve pull act in direction of the cap screw
- For cable diameter
- $\varnothing = 10-16$ mm and 21 mm
- Use for other cable diameter on request



Southwire™



A COLAS RAIL COMPANY

Contact Us: Transit@southwire.com