

Report of Test

LLIA001617-006

Integrating Sphere Report

Catalog Number: LPT36W-850-E39-G4 High Setting (36W)

Mogul-base retrofit lamp mounted VBU, formed plastic housing, formed aluminum heatsinks, clear plastic enclosures. 144 white LEDs, 8 CLW08E-36WC-16C1B-2835-A0 LED boards with 16 LEDs each and one CLW08E-36/63WD-16C1B-2835-A1 LED board with 16 LEDs

One internal LED driver



Performance Summary

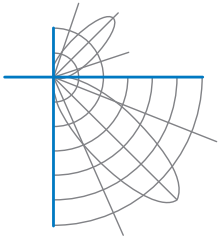
Voltage	120.0 Vac
Current	0.3079 A
Power	36.34 W
Frequency	59.99 Hz
Power Factor	0.984
Current THD	11.2 %
Total Luminous Flux	5657.1 lm
Efficacy	155.7 lm/W
Chromaticity (x,y)	(0.3420, 0.3535)
(u',v')	(0.2086, 0.4851)
Duv	0.0022
CCT	5124 K
CRI (Ra)	82
R9	2
TM-30: Rf	81
TM-30: Rg	96
TM-30: Rcs,h1	-13

Prepared For:

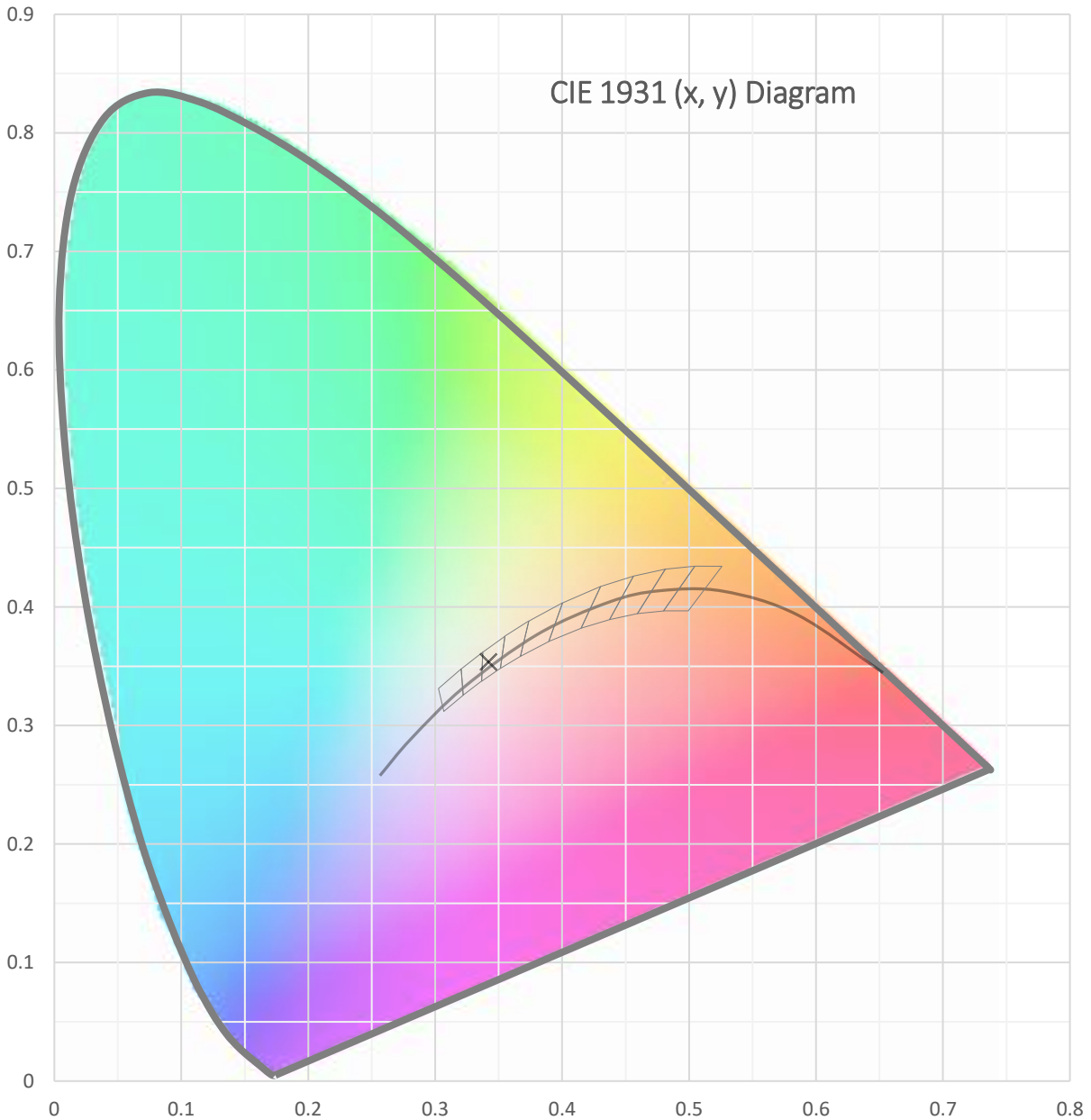
Topaz Lighting Corp
925 Waverly Avenue
Holtsville, NY 11742, USA

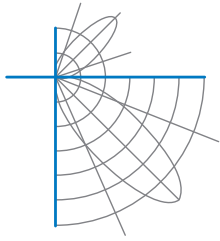
Test date: 12/27/2021
Report date: 12/30/2021

Signed: _____

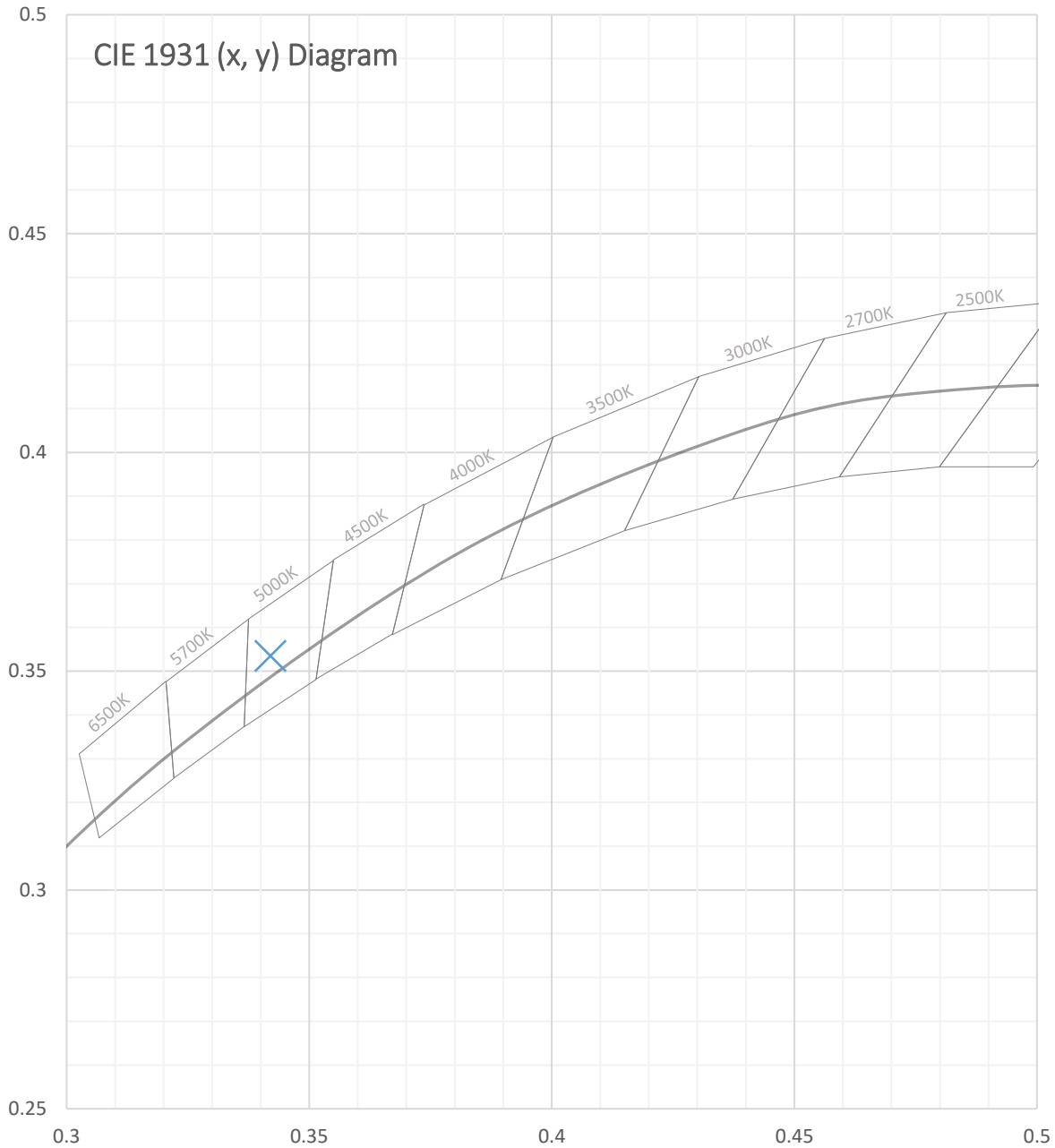


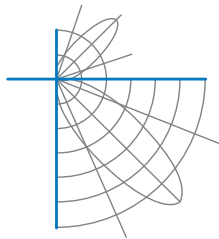
Test Report Number: LLIA001617-006





Test Report Number: LLIA001617-006



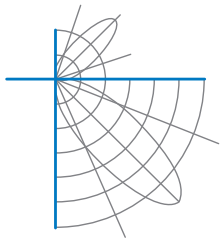


Test Report Number: LLIA001617-006

Total Radiant Flux	17.69 W
Total Luminous Flux	5657.1 Lm
Chromaticity CIE 1931 (x, y)	(0.3420, 0.3535)
Chromaticity CIE 1976 (u', v')	(0.2086, 0.4851)
Correlated Color Temperature (CCT)	5124 K
Color Rendering Index (Ra)	82
R1	80
R2	86
R3	91
R4	82
R5	81
R6	81
R7	86
R8	66
R9	2
R10	67
R11	82
R12	61
R13	81
R14	95
TM-30: Rf	81
TM-30: Rg	96
TM-30: Rcs,h1	-13
Distance from Planckian Locus (Duv)	0.0022
Scotopic/Photopic Ratio ‡	1.951

Electrical Data

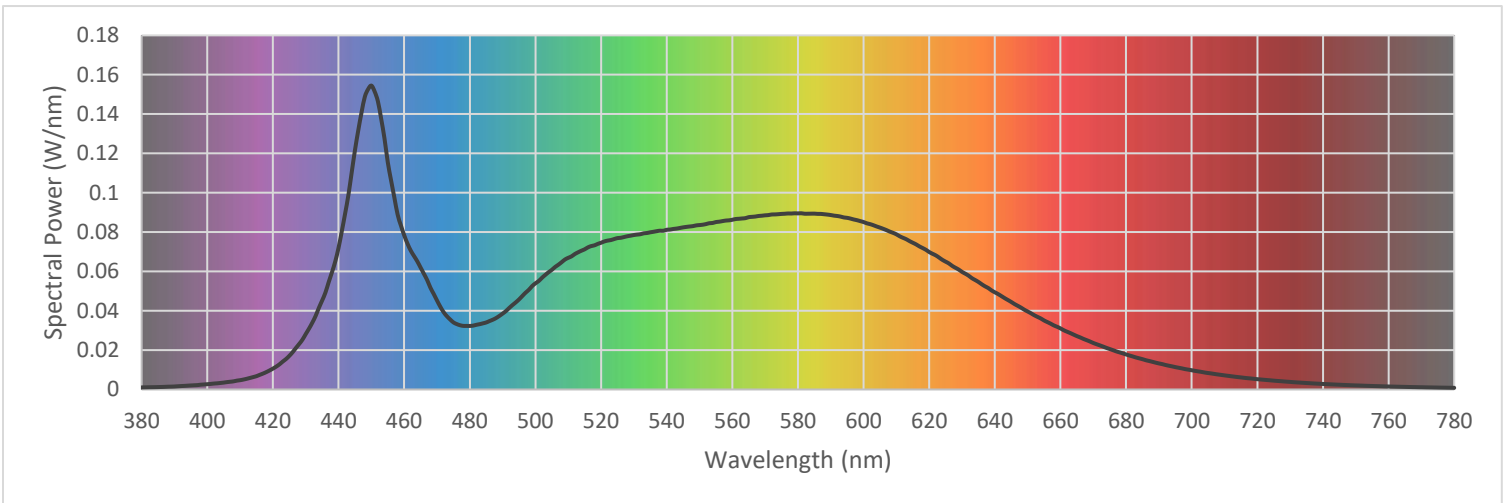
Voltage	120.0 Vac
Current	0.3079 A
Power	36.34 W
Frequency	59.99 Hz
Power Factor	0.984
Current THD	11.2 %

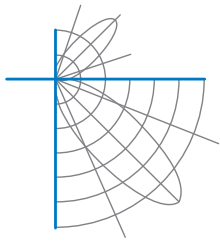


Test Report Number: LLIA001617-006

Summary Spectral Power Distribution (wavelength - nm, spectral power - W/nm)

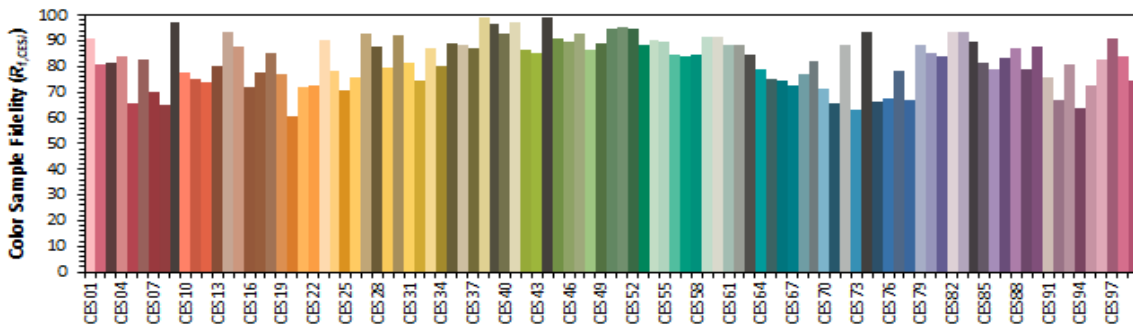
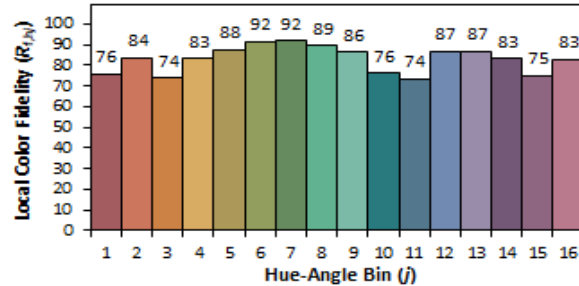
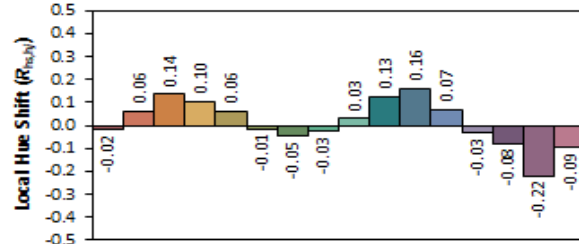
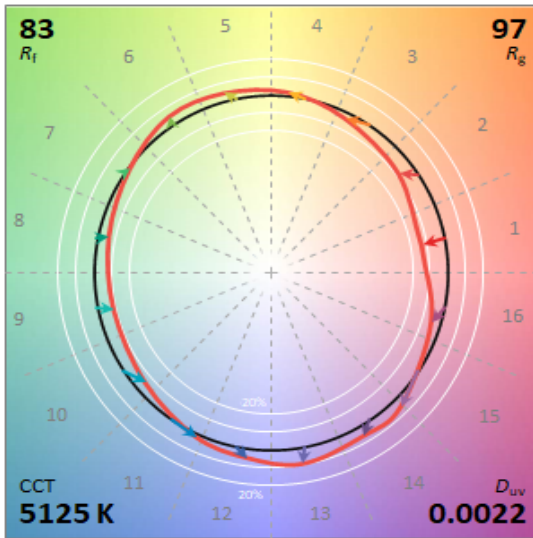
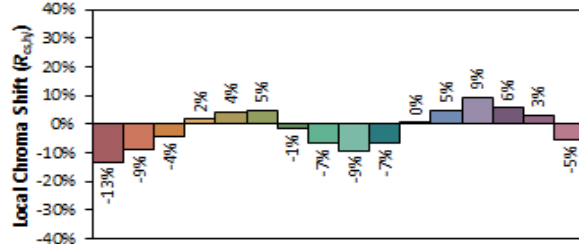
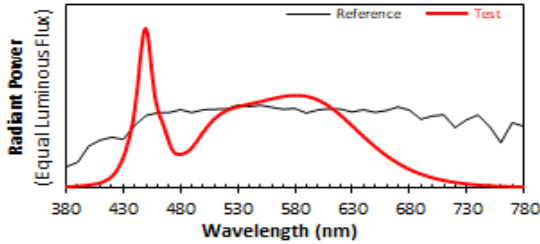
380	0.001054	480	0.032283	580	0.089501	680	0.017795
385	0.001216	485	0.034057	585	0.089375	685	0.015398
390	0.001519	490	0.038556	590	0.088668	690	0.013246
395	0.002042	495	0.045774	595	0.087243	695	0.011370
400	0.002683	500	0.053959	600	0.085102	700	0.009774
405	0.003495	505	0.060806	605	0.082284	705	0.008360
410	0.004719	510	0.066917	610	0.078868	710	0.007164
415	0.006772	515	0.071238	615	0.074582	715	0.006129
420	0.010593	520	0.074583	620	0.069864	720	0.005228
425	0.017097	525	0.076948	625	0.064971	725	0.004481
430	0.028167	530	0.078511	630	0.059772	730	0.003845
435	0.045237	535	0.079886	635	0.054649	735	0.003276
440	0.072088	540	0.081186	640	0.049396	740	0.002796
445	0.121653	545	0.082406	645	0.044486	745	0.002408
450	0.154462	550	0.083570	650	0.039643	750	0.002063
455	0.115539	555	0.085097	655	0.035076	755	0.001766
460	0.078382	560	0.086264	660	0.031046	760	0.001520
465	0.061947	565	0.087593	665	0.027135	765	0.001311
470	0.045242	570	0.088521	670	0.023642	770	0.001129
475	0.034106	575	0.089239	675	0.020555	775	0.000973
						780	0.000841





Test Report Number: LLIA001617-006

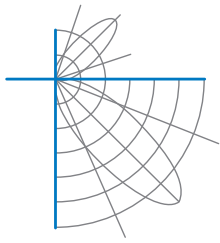
IES TM-30 Details



Notes:

x 0.3420
y 0.3534
u' 0.2086
v' 0.4851

CIE 13.3-1995
(CRI)
R_a 82
R_s 2



Test Report Number: LLIA001617-006

Test Equipment Configuration: LightLab International Allentown 2m Integrating Sphere
Measurements acquired using a Labsphere CDS 2600 spectroradiometer
Testing was performed using 4π geometry

Test Temperature: 25.1 °C

Test Procedure: Tested in accordance with the applicable sections of:
LM-79-19, LM-78-20, LM-58-20, ANSI_ANSI C78.377-2017, TM-30-20

Significance: The laboratory has not participated in the selection of samples to be tested.
All testing is performed on the understanding that the significance of the report is limited to the extent that the test sample is representative of production units.

Notes: The measurements and other derived quantities contained in this report are based on the absolute data as measured.

Prorating the performance of the sample for the use of other component combinations (such as lamp / LED / Ballast / driver), or for use in different environmental conditions than that tested, may produce erroneous results.

This report is free of erasures and corrections

This report may contain data that are not covered by the NVLAP accreditation. Quantities marked with ‡ are not covered.

This report must not be used by the customer to claim product certification, approval or endorsement by NVLAP, NIST, or any agency of the Federal Government.