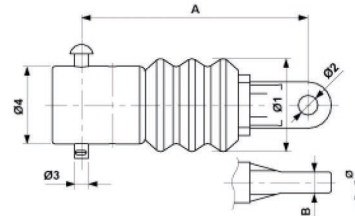


Pipe-end insulator with tongue complete, composite, to pipe 2" Schedule 80

Item number D2372-04



Dimensions

B: 18 mm
Ø2: 17 mm
Ø3: 12 mm
Ø1: 80 mm
Ø4: 48.0 mm
A: 195 mm

Loads

Breaking load: 30 kN

Specification

Operating voltage: max. 3.000 kV
Minimum creeping distance: 92 mm for insulator

Comments

- Connection parts in Al
- Pin and cotter pin SST
- Other insulators on request



Southwire™



A COLAS RAIL COMPANY

Contact Us: Transit@southwire.com