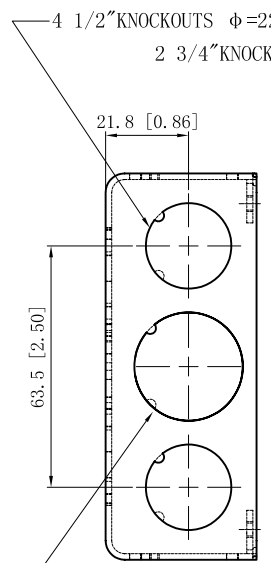
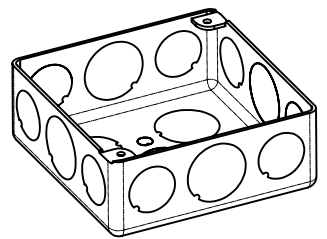
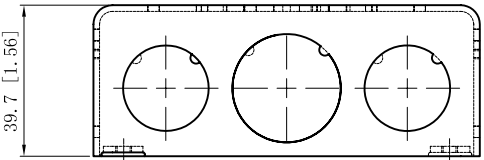
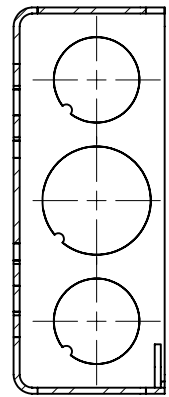
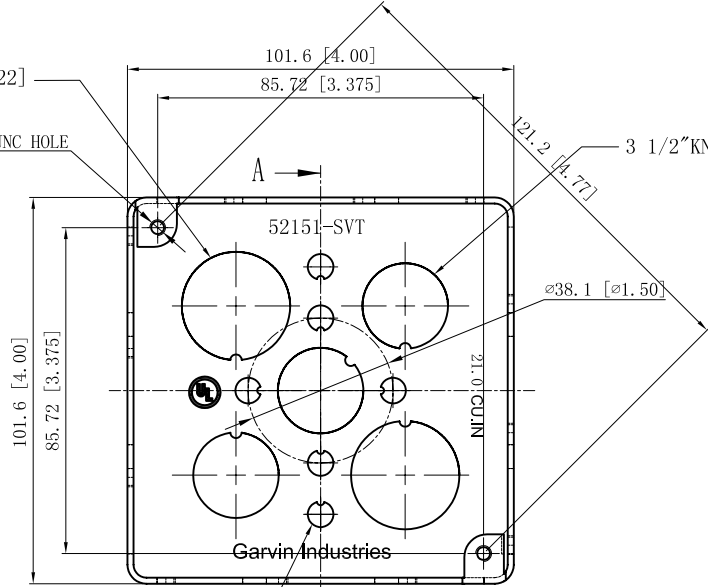


SIDES	BOTTOM
8 1/2" KNOCKOUTS	6 KNOCKOUTS
4 3/4" KNOCKOUTS	3 1/2" KNOCKOUTS
	2 3/4" KNOCKOUTS
Material: Steel-0.0625"-C. R. S., Red powder coating	



2-#8-32 UNC HOLE

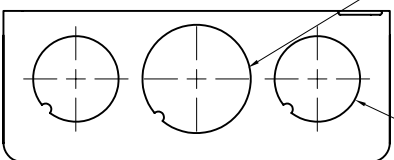


CUTAWAY VIEW A-A

2 3/4" KNOCKOUTS  $\phi=28.50$  [ $\phi=1.122$ ]

6 KNOCKOUTS  $\phi=6.75$  [ $\phi=0.266$ ]

2 3/4" KNOCKOUTS  $\phi=28.50$  [ $\phi=1.122$ ]



4 1/2" KNOCKOUTS  $\phi=22.50$  [ $\phi=0.886$ ]

DESCRIPTION
TRADE REFERENCE TERMS

This data sheet is for reference only. GARVIN INDUSTRIES reserves the right to make changes to the design without prior notice.

STANDARD PACKING
50 PCS

<b>GARVIN INDUSTRIES</b>		
TITLE 4" SQUARE BOXES (1-1/2" DEEP)		
SIZE A4	DWG NO. 52151-SVTRED	REV
DATA SHEET		