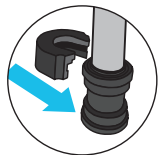
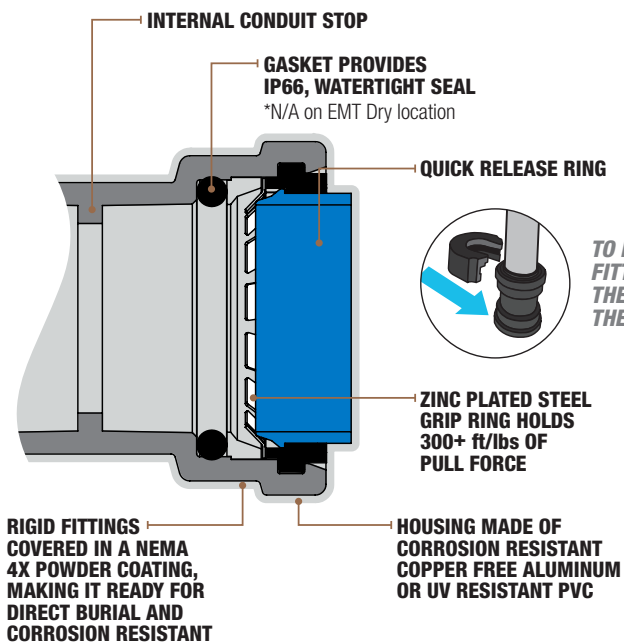


RIGID PULL ELBOW

Southwire® SIMPush™ Rigid pull elbows are used for connecting UL-approved a threaded or non-threaded, RMC, IMC, GRC, ARC and rigid stainless-steel conduit to form a 90° bend.

FEATURES:

- Corrosion-resistant copper-free diecast aluminum construction
- Raintight to prevent water from getting into conduit, box, or enclosure
- IP66 – Dust tight and protects against powerful jetting water
- Concrete-tight
- Provides continuous ground
- Powder-coated externally for corrosion resistance
- Internally coated with lubricating grease
- Tested to 100 removal cycles for reuse
- Locking teeth are constructed from zinc-plated steel
- Works with threaded or unthreaded conduit



TO REMOVE THE SIMPush™ FITTING, SIMPLY SLIDE THE REMOVAL TOOL ONTO THE COLLAR AND PULL

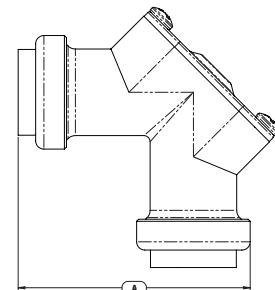
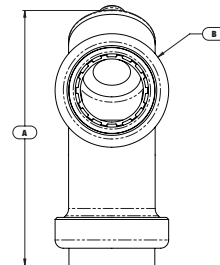
1/2" – 1-1/4"



CERTIFICATIONS/RATINGS:
NEMA FB RATED (4X)
E-FILE #: E474447



RMCP E050, RMCP E075,
RMCP E100, RMCP E125



Stock #	Model #	Trade Size	Quantity Per Box	H (in.) A	W (in.) A	L (in.) C	Associated Removal Tool Model #	Removal Tool Included
CONTRACTOR PACK								
65078502	R-PE-050WT	1/2"	18	3.16	3.16	1.298	R-RT-P1	YES
65078602	R-PE-075WT	3/4"	8	3.549	3.549	1.653	R-RT-P1	YES
65078702	R-PE-100WT	1"	6	4.433	4.433	1.93	R-RT-P2	YES
65078902	R-PE-125WT	1-1/4"	4	5.354	5.354	2.42	R-RT-P2	YES

Project Name:
Contractor:
Address:

**BUILT FOR DURABILITY.
BUILT FOR RELIABILITY.
BUILT FOR WORK.™**

1-855-798-6657 | SOUTHWIRETOOLS.COM

©2020 Southwire Company, LLC. All rights reserved.
*Registered Trademark & ™ Trademark of Southwire Company, LLC.