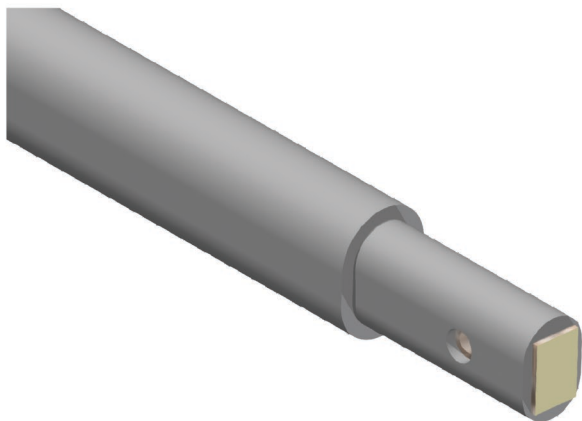


Insulation rod

Item number D0132-01



Dimensions

A: 450 mm

E: 19 mm

F: 13 mm

B: 368 mm

C: 24 mm

D: 18 mm

Material and weight

Weight: 0.215 kg

Material: GRP

Specification

Creep resistance: (KC) > 600

Breakdown voltage: 12 kV/mm

Comments

- For tube connection



Southwire™



A COLAS RAIL COMPANY

Contact Us: Transit@southwire.com