

## Report of Test

**LLIA001646-004**

Integrating Sphere Report

Catalog Number: LWP-30WPCTS-EX39-G 10W, 5000K

Mogul-base retrofit lamp mounted horizontal and aimed down, formed plastic housing, formed aluminum heatsink, three clear plastic enclosures.

192 white LEDs; 96 CW, 96 WW on three circuit boards with 64 LEDs each

Internal LED driver



### Performance Summary

Voltage	120.0 Vac
Current	0.0839 A
Power	9.65 W
Frequency	59.99 Hz
Power Factor	0.958
Current THD	17.4 %
Total Luminous Flux	1611.3 lm
Efficacy	167.0 lm/W
Chromaticity (x,y)	(0.3425, 0.3542)
(u',v')	(0.2087, 0.4856)
Duv	0.0024
CCT	5107 K
CRI (Ra)	85
R9	17
TM-30: Rf	82
TM-30: Rg	94
TM-30: Rcs,h1	-12

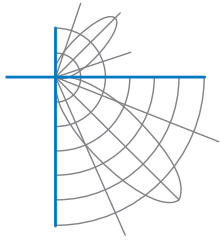
Prepared For:

Topaz Lighting Corp  
925 Waverly Avenue  
Holtsville, NY 11742, USA

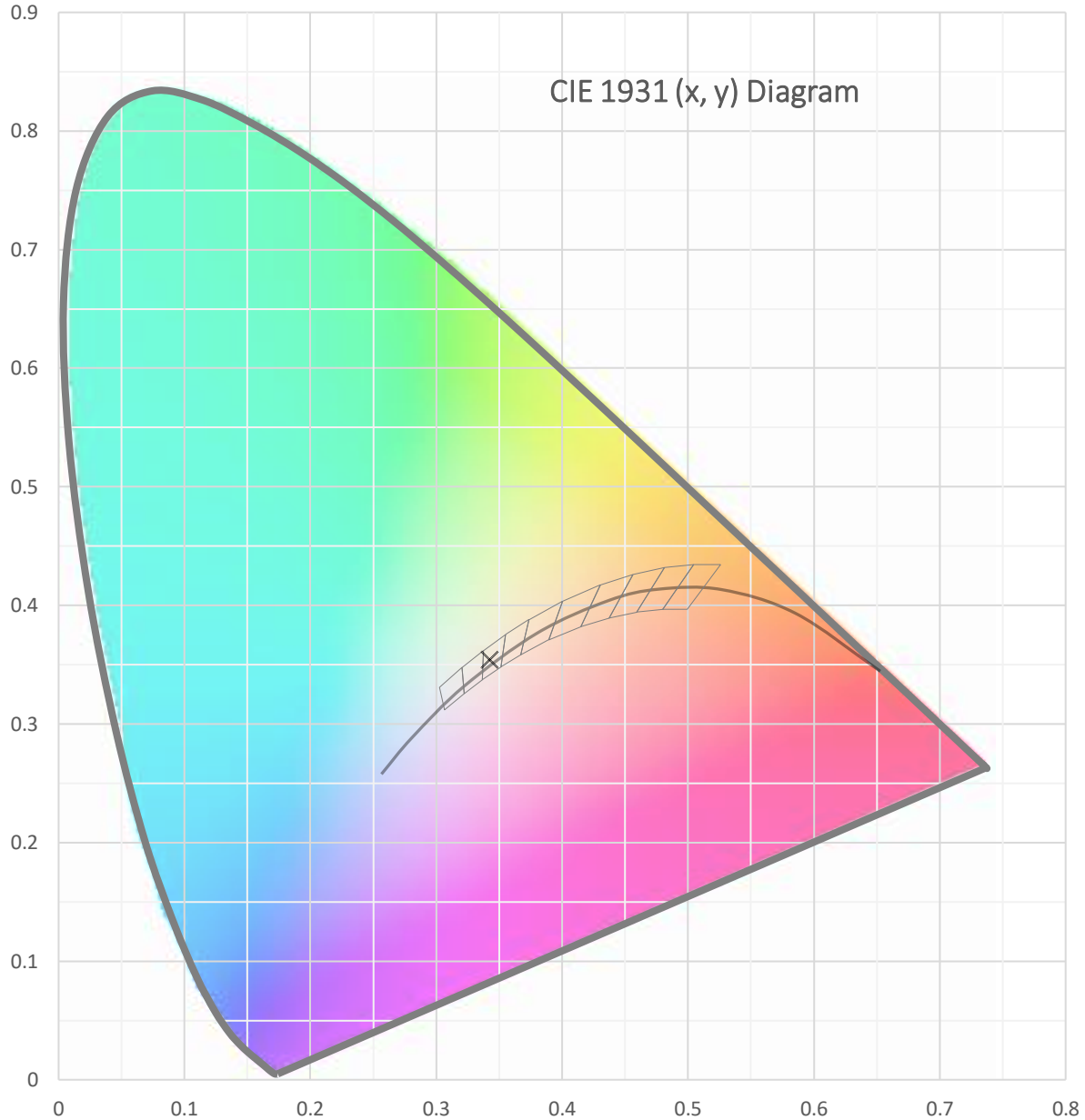
Test date: 01/28/2022

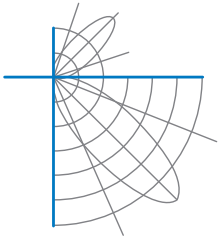
Report date: 02/01/2022

Signed: \_\_\_\_\_

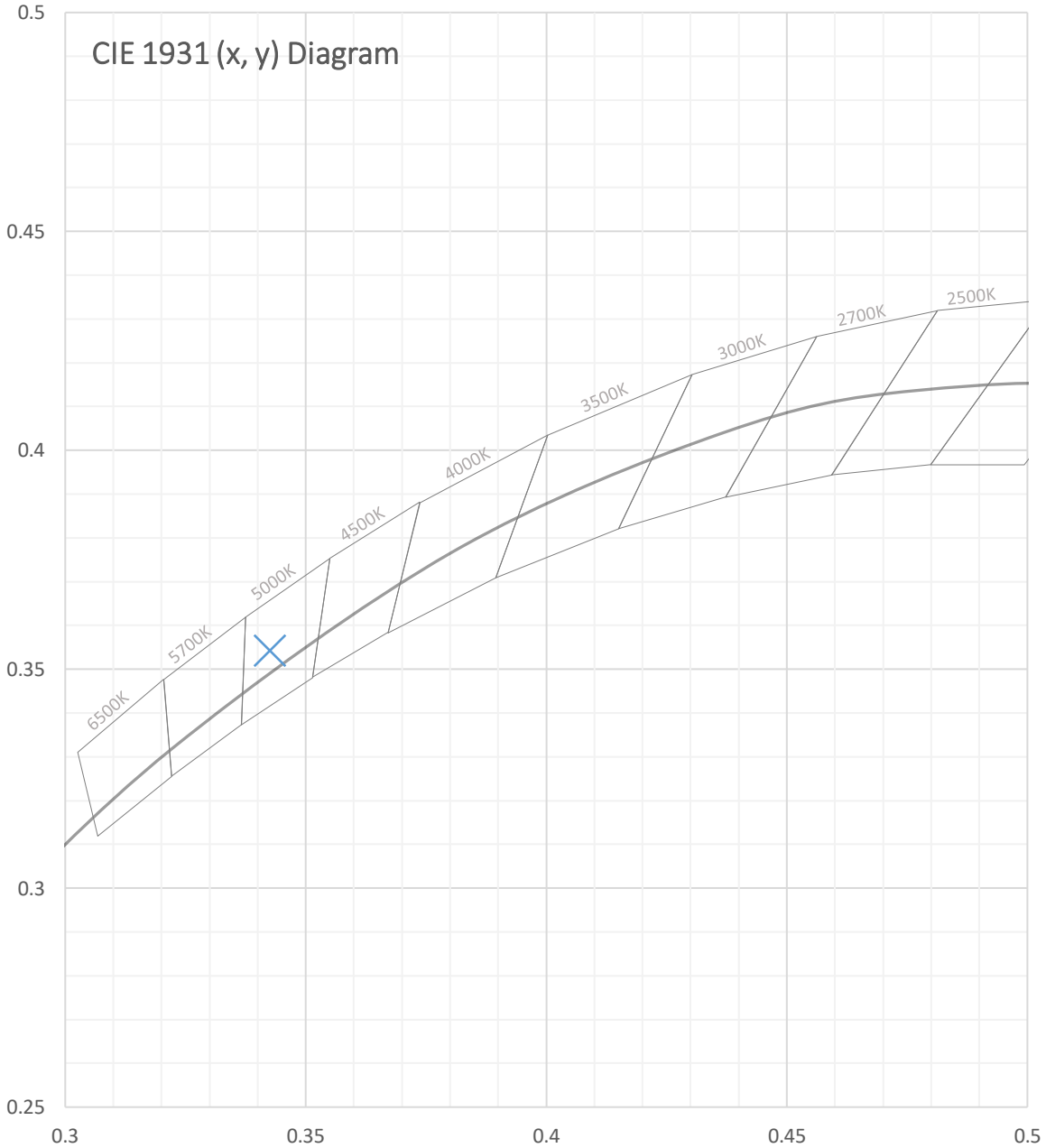


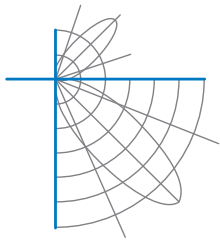
Test Report Number: LLIA001646-004





Test Report Number: LLIA001646-004





Test Report Number: LLIA001646-004

Total Radiant Flux	5.120 W
Total Luminous Flux	1611.3 Lm
Chromaticity CIE 1931 (x, y)	(0.3425, 0.3542)
Chromaticity CIE 1976 (u', v')	(0.2087, 0.4856)
Correlated Color Temperature (CCT)	5107 K
Color Rendering Index (Ra)	85
R1	84
R2	92
R3	95
R4	83
R5	84
R6	87
R7	87
R8	69
R9	17
R10	79
R11	82
R12	61
R13	86
R14	98
TM-30: Rf	82
TM-30: Rg	94
TM-30: Rcs,h1	-12
Distance from Planckian Locus (Duv)	0.0024
Scotopic/Photopic Ratio ‡	2.027

**Electrical Data**

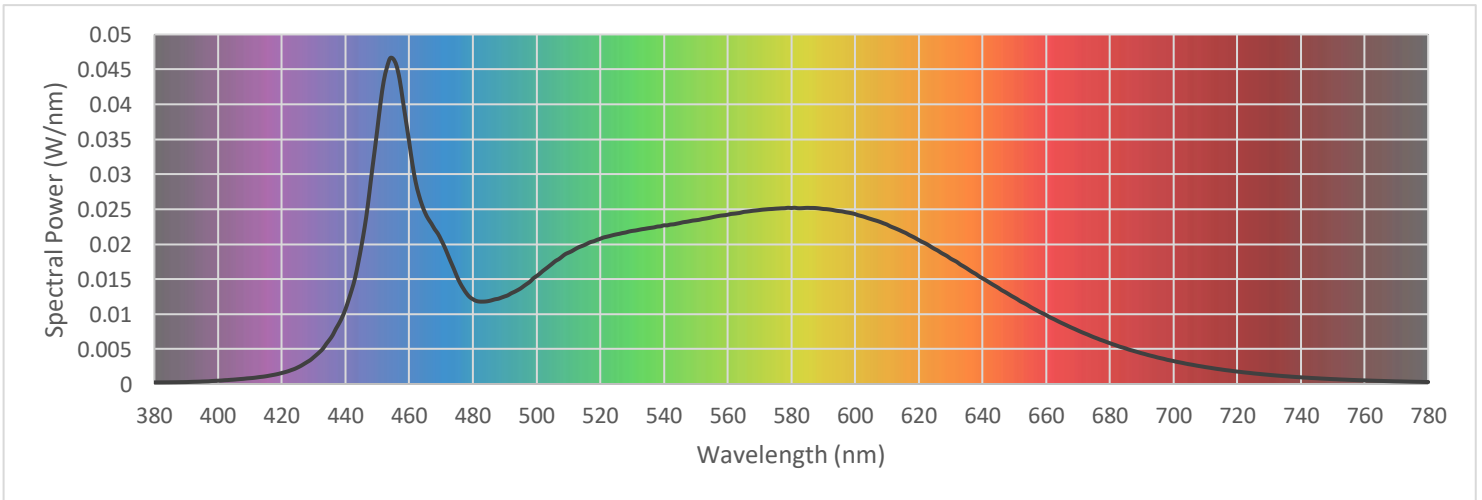
Voltage	120.0 Vac
Current	0.0839 A
Power	9.65 W
Frequency	59.99 Hz
Power Factor	0.958
Current THD	17.4 %

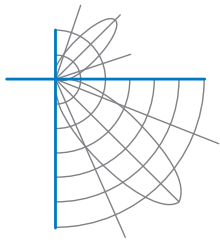


Test Report Number: LLIA001646-004

Summary Spectral Power Distribution (wavelength - nm, spectral power - W/nm)

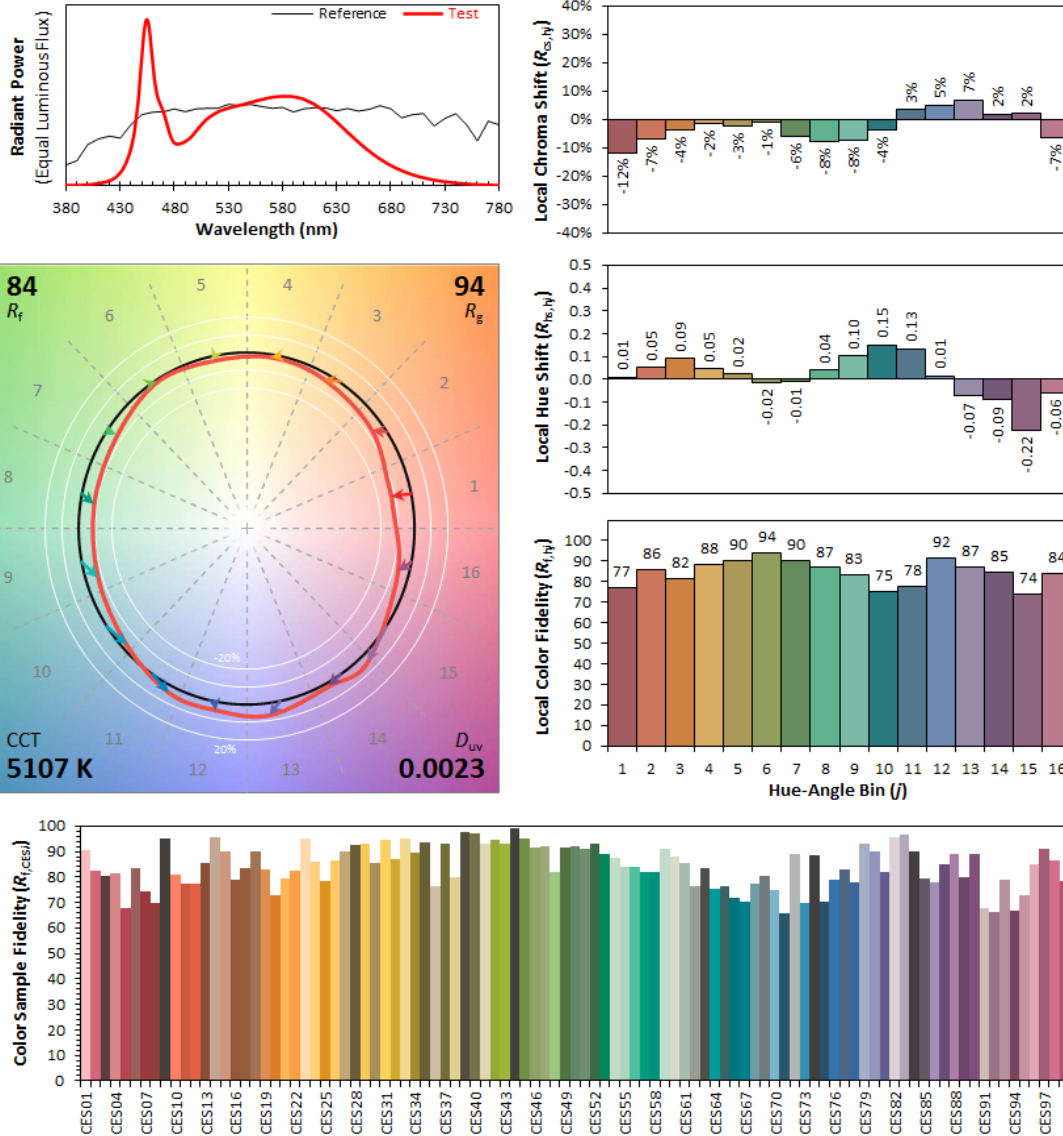
380	0.000223	480	0.012129	580	0.025167	680	0.005842
385	0.000238	485	0.011871	585	0.025195	685	0.005085
390	0.000273	490	0.012524	590	0.025033	690	0.004398
395	0.000352	495	0.013670	595	0.024733	695	0.003796
400	0.000471	500	0.015428	600	0.024309	700	0.003283
405	0.000627	505	0.017239	605	0.023595	705	0.002817
410	0.000829	510	0.018776	610	0.022813	710	0.002421
415	0.001103	515	0.019868	615	0.021783	715	0.002079
420	0.001575	520	0.020768	620	0.020593	720	0.001776
425	0.002369	525	0.021394	625	0.019315	725	0.001525
430	0.003820	530	0.021895	630	0.017947	730	0.001307
435	0.006337	535	0.022275	635	0.016573	735	0.001116
440	0.010707	540	0.022704	640	0.015122	740	0.000952
445	0.019737	545	0.023020	645	0.013757	745	0.000819
450	0.036428	550	0.023421	650	0.012384	750	0.000699
455	0.046497	555	0.023831	655	0.011055	755	0.000597
460	0.034596	560	0.024209	660	0.009867	760	0.000514
465	0.024489	565	0.024610	665	0.008700	765	0.000440
470	0.020648	570	0.024880	670	0.007654	770	0.000378
475	0.015373	575	0.025077	675	0.006690	775	0.000325
						780	0.000279



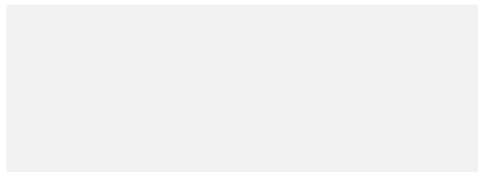


Test Report Number: LLIA001646-004

IES TM-30 Details



Notes:



x **0.3425**  
y **0.3542**  
 $u'$  **0.2087**  
 $v'$  **0.4855**

CIE 13.3-1995  
(CRI)  
 $R_a$  85  
 $R_g$  17



## Test Report Number: LLIA001646-004

**Test Equipment Configuration:** LightLab International Allentown 2m Integrating Sphere  
Measurements acquired using a Labsphere CDS 2600 spectroradiometer  
Testing was performed using  $4\pi$  geometry

**Test Temperature:** 25.0 °C

**Test Procedure:** Tested in accordance with the applicable sections of:  
LM-79-19, LM-78-20, LM-58-20, ANSI\_ANSLG C78.377-2017, TM-30-20

**Significance:** The laboratory has not participated in the selection of samples to be tested.  
All testing is performed on the understanding that the significance of the report is limited to the extent that the test sample is representative of production units.

**Notes:** The measurements and other derived quantities contained in this report are based on the absolute data as measured.

Prorating the performance of the sample for the use of other component combinations (such as lamp / LED / Ballast / driver), or for use in different environmental conditions than that tested, may produce erroneous results.

This report is free of erasures and corrections

This report may contain data that are not covered by the NVLAP accreditation. Quantities marked with ‡ are not covered.

This report must not be used by the customer to claim product certification, approval or endorsement by NVLAP, NIST, or any agency of the Federal Government.