



Report of Test

LLIA001646-006

Integrating Sphere Report

Catalog Number: LWP-30WPCTS-EX39-G 30W, 5000K

Mogul-base retrofit lamp mounted horizontal and aimed down, formed plastic housing, formed aluminum heatsink, three clear plastic enclosures.

192 white LEDs; 96 CW, 96 WW on three circuit boards with 64 LEDs each

Internal LED driver



Performance Summary

Voltage	120.0 Vac
Current	0.2497 A
Power	29.62 W
Frequency	59.99 Hz
Power Factor	0.988
Current THD	12.1 %
Total Luminous Flux	4545.8 lm
Efficacy	153.5 lm/W
Chromaticity (x,y)	(0.3402, 0.3514)
(u',v')	(0.2082, 0.4838)
Duv	0.0019
CCT	5191 K
CRI (Ra)	85
R9	16
TM-30: Rf	82
TM-30: Rg	94
TM-30: Rcs,h1	-12

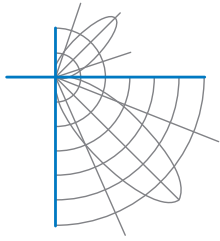
Prepared For:

Topaz Lighting Corp
925 Waverly Avenue
Holtsville, NY 11742, USA

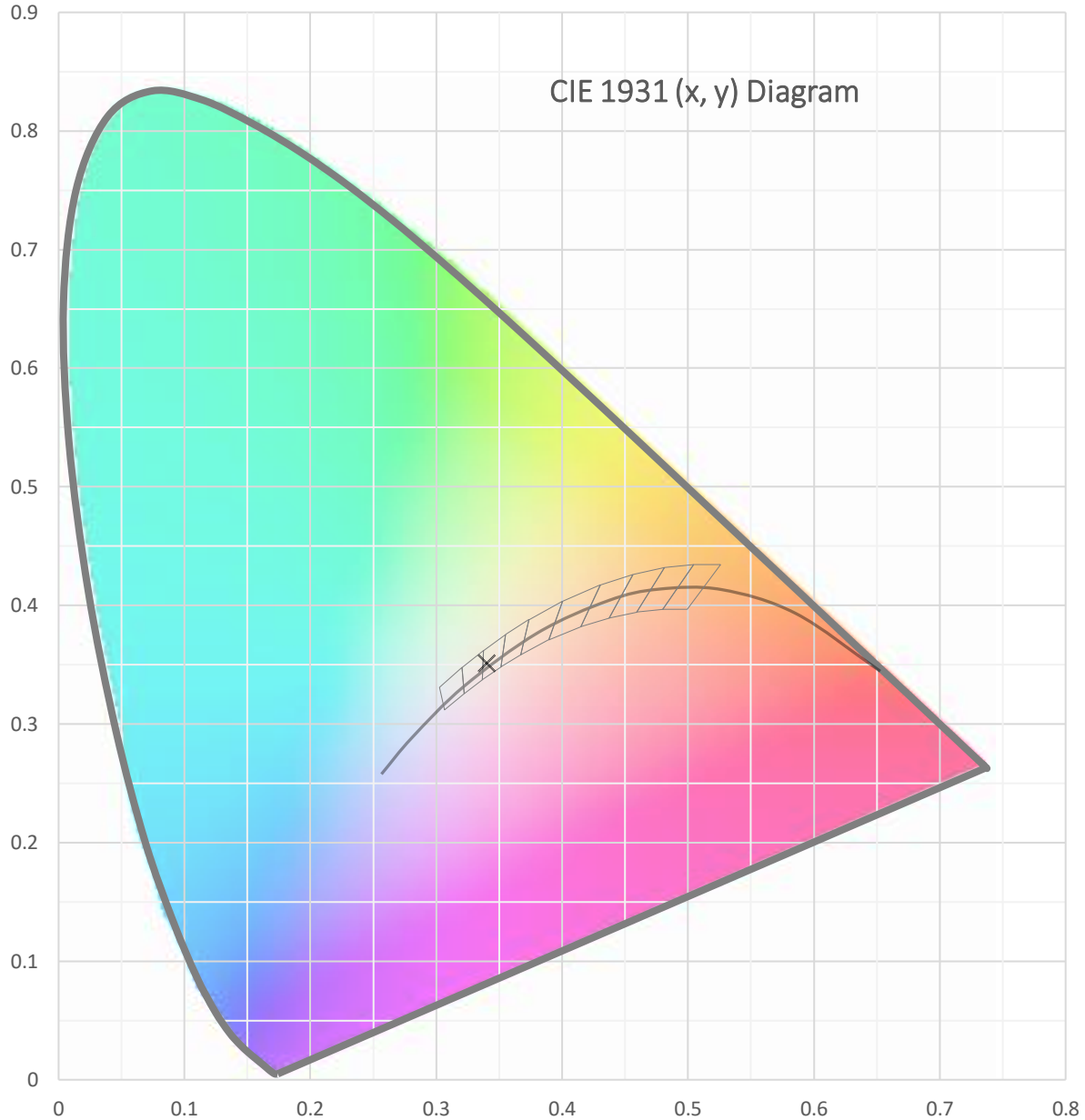
Test date: 01/28/2022

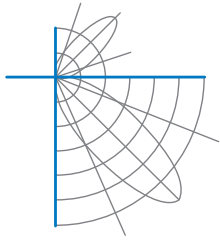
Report date: 02/01/2022

Signed: _____

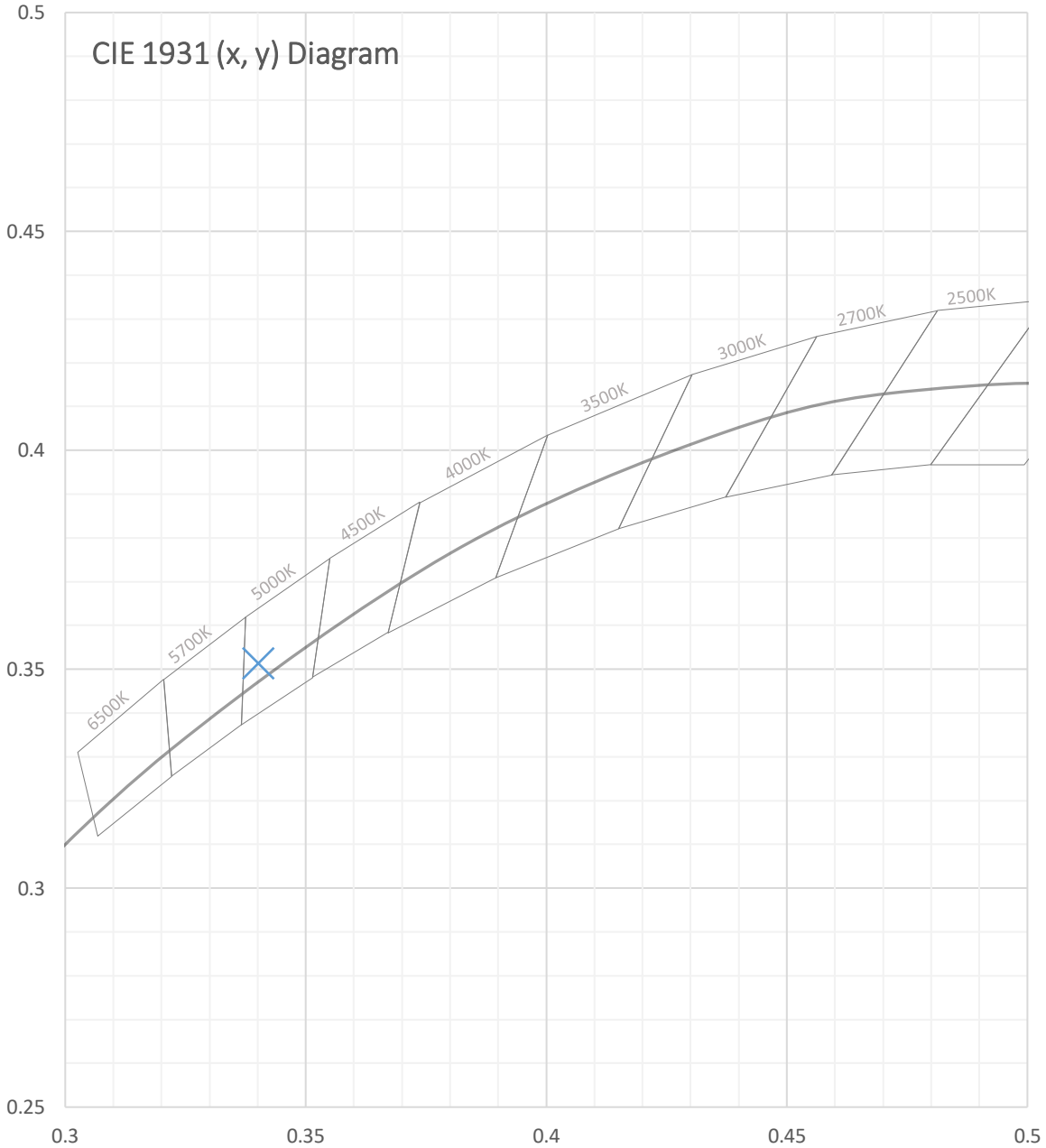


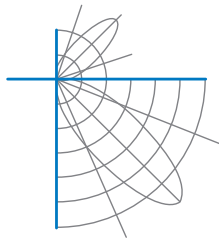
Test Report Number: LLIA001646-006





Test Report Number: LLIA001646-006





Test Report Number: LLIA001646-006

Total Radiant Flux	14.53 W
Total Luminous Flux	4545.8 Lm
Chromaticity CIE 1931 (x, y)	(0.3402, 0.3514)
Chromaticity CIE 1976 (u', v')	(0.2082, 0.4838)
Correlated Color Temperature (CCT)	5191 K
Color Rendering Index (Ra)	85
R1	83
R2	91
R3	94
R4	83
R5	83
R6	86
R7	87
R8	69
R9	16
R10	78
R11	82
R12	62
R13	86
R14	97
TM-30: Rf	82
TM-30: Rg	94
TM-30: Rcs,h1	-12
Distance from Planckian Locus (Duv)	0.0019
Scotopic/Photopic Ratio ‡	2.037

Electrical Data

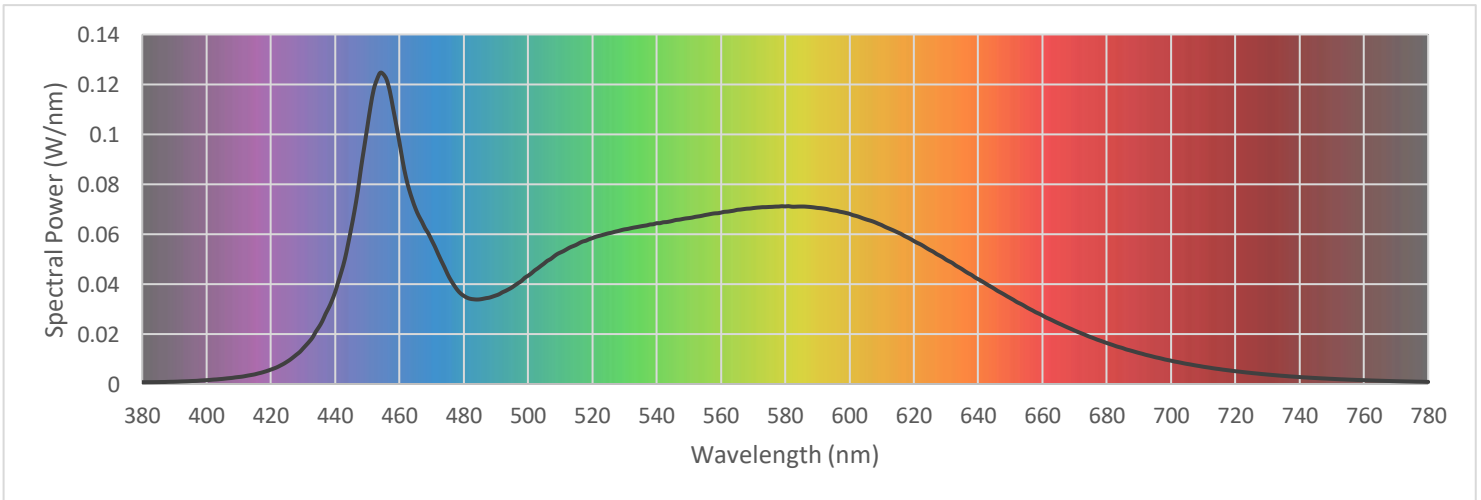
Voltage	120.0 Vac
Current	0.2497 A
Power	29.62 W
Frequency	59.99 Hz
Power Factor	0.988
Current THD	12.1 %



Test Report Number: LLIA001646-006

Summary Spectral Power Distribution (wavelength - nm, spectral power - W/nm)

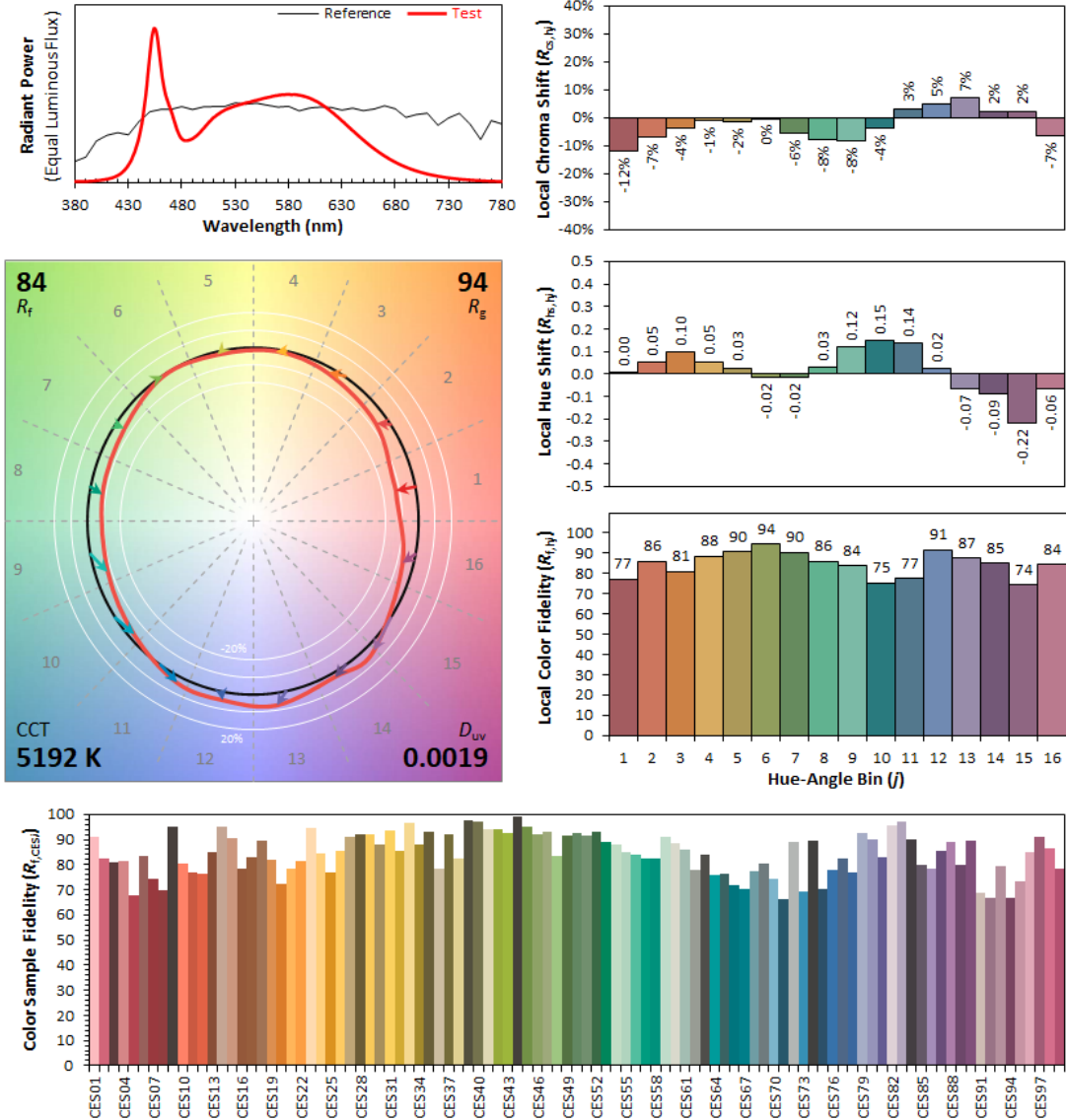
380	0.000699	480	0.035324	580	0.071117	680	0.016421
385	0.000760	485	0.033902	585	0.071075	685	0.014364
390	0.000900	490	0.035457	590	0.070527	690	0.012436
395	0.001163	495	0.038672	595	0.069519	695	0.010765
400	0.001532	500	0.043365	600	0.068151	700	0.009332
405	0.002047	505	0.048266	605	0.065985	705	0.008041
410	0.002793	510	0.052620	610	0.063643	710	0.006917
415	0.003865	515	0.055741	615	0.060691	715	0.005973
420	0.005760	520	0.058413	620	0.057279	720	0.005123
425	0.008898	525	0.060341	625	0.053659	725	0.004412
430	0.014210	530	0.061920	630	0.049816	730	0.003792
435	0.022904	535	0.063135	635	0.045997	735	0.003245
440	0.036836	540	0.064409	640	0.041993	740	0.002778
445	0.062377	545	0.065357	645	0.038193	745	0.002385
450	0.102824	550	0.066447	650	0.034420	750	0.002055
455	0.124032	555	0.067644	655	0.030783	755	0.001757
460	0.096748	560	0.068628	660	0.027469	760	0.001521
465	0.070235	565	0.069743	665	0.024306	765	0.001305
470	0.057636	570	0.070443	670	0.021417	770	0.001123
475	0.043936	575	0.070902	675	0.018772	775	0.000967
						780	0.000834



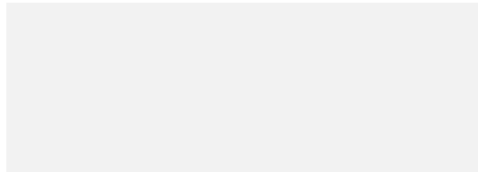


Test Report Number: LLIA001646-006

IES TM-30 Details

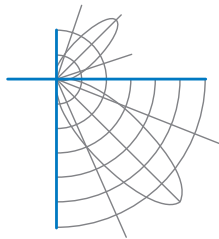


Notes:



x **0.3402**
y **0.3513**
 u' **0.2082**
 v' **0.4838**

CIE 13.3-1995
(CRI)
 R_a 85
 R_g 16



Test Report Number: LLIA001646-006

Test Equipment Configuration: LightLab International Allentown 2m Integrating Sphere
Measurements acquired using a Labsphere CDS 2600 spectroradiometer
Testing was performed using 4π geometry

Test Temperature: 25.2 °C

Test Procedure: Tested in accordance with the applicable sections of:
LM-79-19, LM-78-20, LM-58-20, ANSI_ANSLG C78.377-2017, TM-30-20

Significance: The laboratory has not participated in the selection of samples to be tested.
All testing is performed on the understanding that the significance of the report is limited to the extent that the test sample is representative of production units.

Notes: The measurements and other derived quantities contained in this report are based on the absolute data as measured.

Prorating the performance of the sample for the use of other component combinations (such as lamp / LED / Ballast / driver), or for use in different environmental conditions than that tested, may produce erroneous results.

This report is free of erasures and corrections

This report may contain data that are not covered by the NVLAP accreditation. Quantities marked with ‡ are not covered.

This report must not be used by the customer to claim product certification, approval or endorsement by NVLAP, NIST, or any agency of the Federal Government.