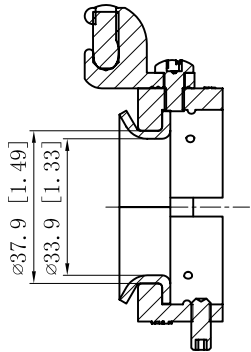
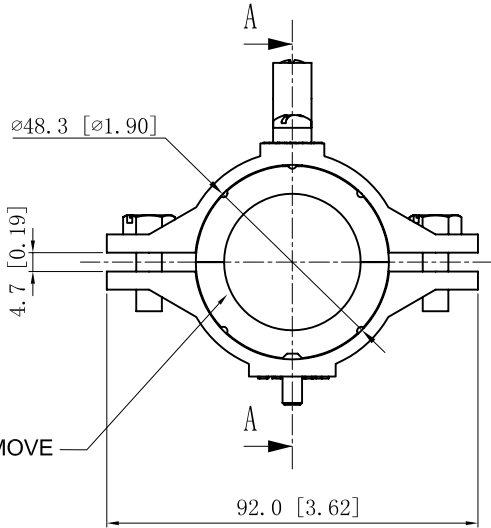
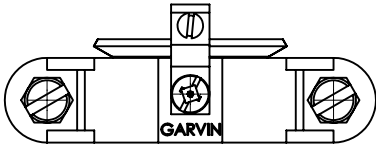
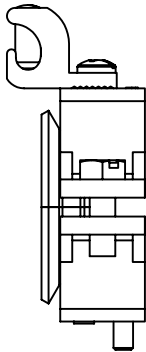
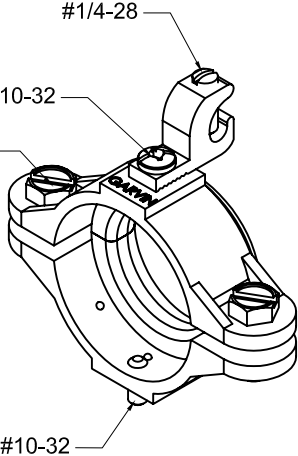


| SIDES | BOTTOM |
|---------------------------------------|--------|
| | |
| | |
| | |
| | |
| 1 PCS 10-32×3/8 Screws Installed | |
| 1 PCS 1/4-28×5/8 Screws Installed | |
| 2 PCS 1/4-20×3/4 Screws Installed | |
| 1 PCS #10-32×1/2 Set Screws Installed | |
| Material:Zamak-ZAMAK 3 | |



CUTAWAY VIEW A-A



RUBBER CAN'T REMOVE

| DESCRIPTION |
|-----------------------------|
| Patent Pending: US8231392B2 |
| TRADE REFERENCE TERMS |
| |

| STANDARD PACKING |
|------------------|
| 25 PCS |

| | | | |
|---|---------|--|-----|
| This data sheet is for reference only .GARVIN INDUSTRIES reserves the right to make changes to the design without prior notice. | | | |
| GARVIN INDUSTRIES | | | |
| TITLE | | | |
| GROUND CHOKE | | | |
| SIZE | DWG NO. | | REV |
| A4 | SGB150 | | |
| DATA SHEET | | | |