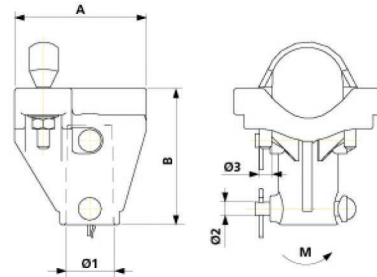


Drop bracket clamp for pipe, complete, reinforced, to pipe 2"

Item number D2557-01



Dimensions

A: 115 mm

Ø1: 39 mm

Ø2: 12 mm

Ø3: M12

B: 120 mm

Material and weight

Material: Al/SST

Loads

Failing bending moment M: to pipe 2950 Nm

Comments

- Flat U-bolt M12 SST
- Pin and cotter pin SST
- Drop bracket clamps with flat U-bolt, side mounted to pipe, complete and other pipe diameter on request



Southwire™



A COLAS RAIL COMPANY

Contact Us: Transit@southwire.com