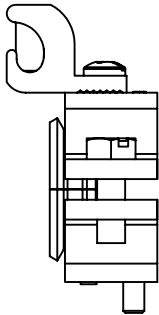
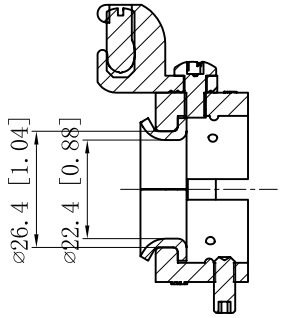
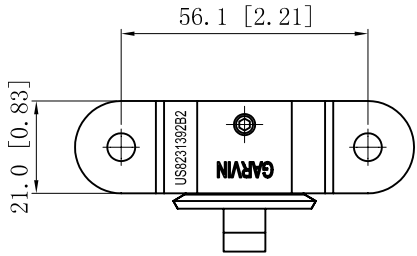
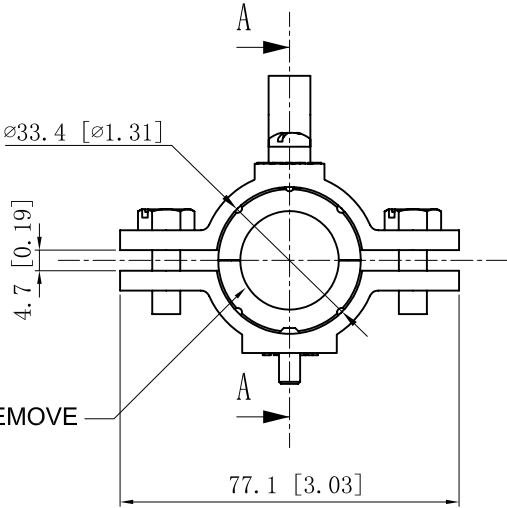


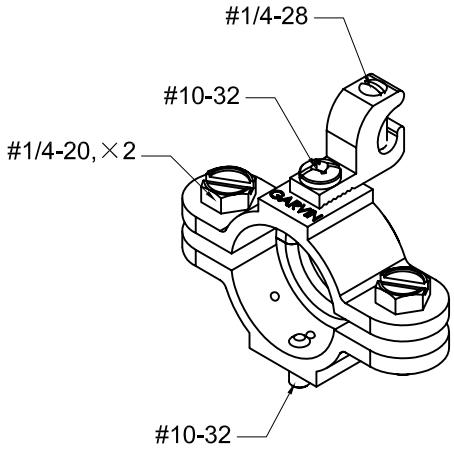
SIDES	BOTTOM
1 PCS 10-32×3/8 Screws Installed	
1 PCS 1/4-28×5/8 Screws Installed	
2 PCS 1/4-20×3/4 Screws Installed	
1 PCS #10-32×1/2 Set Screws Installed	
Material:Zamak-ZAMAK 3	



RUBBER CAN'T REMOVE



CUTAWAY VIEW A-A



DESCRIPTION
Patent pending: US8231392B2
TRADE REFERENCE TERMS

This data sheet is for reference only .GARVIN INDUSTRIES reserves the right to make changes to the design without prior notice.			
STANDARD PACKING	GARVIN INDUSTRIES		
25 PCS	TITLE GROUND CHOKE		
	SIZE A4	DWG NO. SGB100	REV
	DATA SHEET		