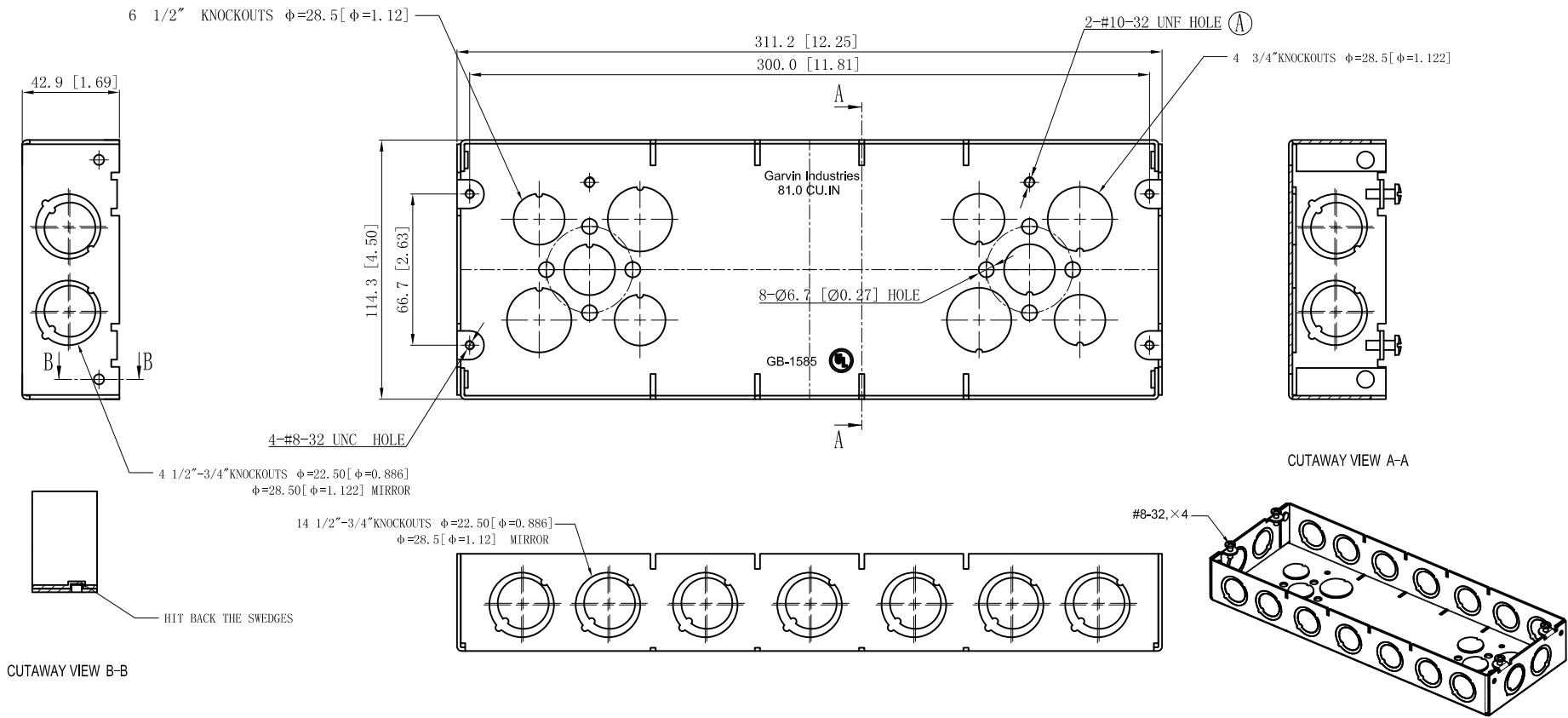


<b>SIDES</b>	<b>BOTTOM</b>
18 1/2"-3/4" KNOCKOUTS	6 1/2" KNOCKOUTS
	4 3/4" KNOCKOUTS
4 PCS 8-32×1/2 Screws Installed	
Material: Steel-0.0625"-G60 Galvanized	



DESCRIPTION
TRADE REFERENCE TERMS

STANDARD PACKING		TITLE	
10 PCS		GARVIN INDUSTRIES	
SIZE		DWG NO.	
A4		GB-1585	
		DATA SHEET	
		REV	
		D	

This data sheet is for reference only .GARVIN INDUSTRIES reserves the right to make changes to the design without prior notice.