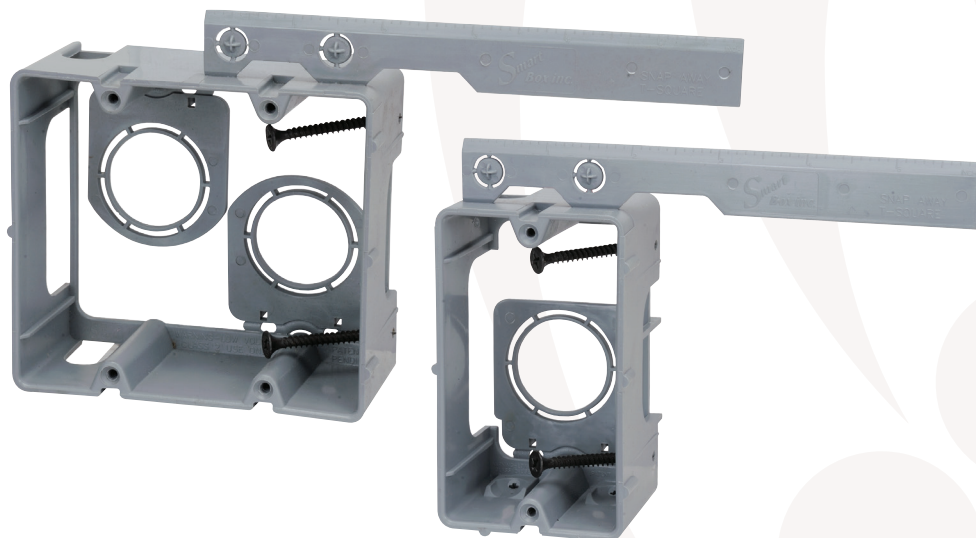




# Southwire™

## Romex® BRAND **SMARTBOX™** LOW VOLTAGE

Box alignment made easier. The 1 and 2 gang Romex® Brand SmartBox™ Low Voltage Boxes offer a unique leveling feature to help electricians align the data box to an existing electrical box. These data boxes also incorporate a 3/4" to 1" snap out conduit adapter. The adapter swings on a hinge in an outwardly direction to a 90 degree locking position in either a vertical or horizontal direction. The 2 gang data box features 2 of these conduit adaptors providing feed through wiring. As with the entire Smart Box line, low voltage data boxes are well suited for new and old work with adjustable depth capacity.



**AVAILABLE IN 1 AND 2 GANG**

**LEVELING TAB FEATURE  
FOR EASY ALIGNMENT  
TO ADJACENT BOX**

**HEAVY DUTY 42 LB.  
MOUNTING SCREWS SUPPLIED**

**ALL 6/32 DEVICE HOLES ARE  
THREADED**

**USE WHERE TV AND  
COMPUTERS ARE SUITED**



MODEL #	UPC	DESCRIPTION	HEIGHT	WIDTH	DEPTH	WEIGHT	TRADE SIZE	CUBIC INCH	MASTER QTY	MASTER WEIGHT
MSBLV1G	784297017827	1 Gang Box	3.80"	2.25"	1.77"	0.15 lbs.	1 Gang	10.75	16	2.40 lbs.
MSBLV2G	784297017834	2 Gang Box	3.80"	4.19"	1.77"	0.21 lbs.	2 Gang	20.84	50	10.65 lbs.

**BUILT FOR DURABILITY.  
BUILT FOR RELIABILITY.  
BUILT FOR WORK.™**

1-855-798-6657 | SOUTHWIRE.COM

©2021 Southwire Company, LLC. All rights reserved.  
®/TM - Registered Trademark and ™ Trademark of Southwire Company, LLC