



## Report of Test

LLIA001617-004

Integrating Sphere Report

Catalog Number: LPT36W-850-E39-G4 Low Setting (18W)

Mogul-base retrofit lamp mounted VBU, formed plastic housing, formed aluminum heatsinks, clear plastic enclosures. 144 white LEDs, 8 CLW08E-36WC-16C1B-2835-A0 LED boards with 16 LEDs each and one CLW08E-36/63WD-16C1B-2835-A1 LED board with 16 LEDs

One internal LED driver



### Performance Summary

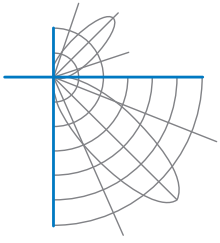
Voltage	120.0 Vac
Current	0.1720 A
Power	19.24 W
Frequency	59.99 Hz
Power Factor	0.932
Current THD	19.3 %
Total Luminous Flux	3214.2 lm
Efficacy	167.1 lm/W
Chromaticity (x,y)	(0.3437, 0.3560)
(u',v')	(0.2088, 0.4866)
Duv	0.0027
CCT	5067 K
CRI (Ra)	82
R9	2
TM-30: Rf	81
TM-30: Rg	96
TM-30: Rcs,h1	-13

Prepared For:

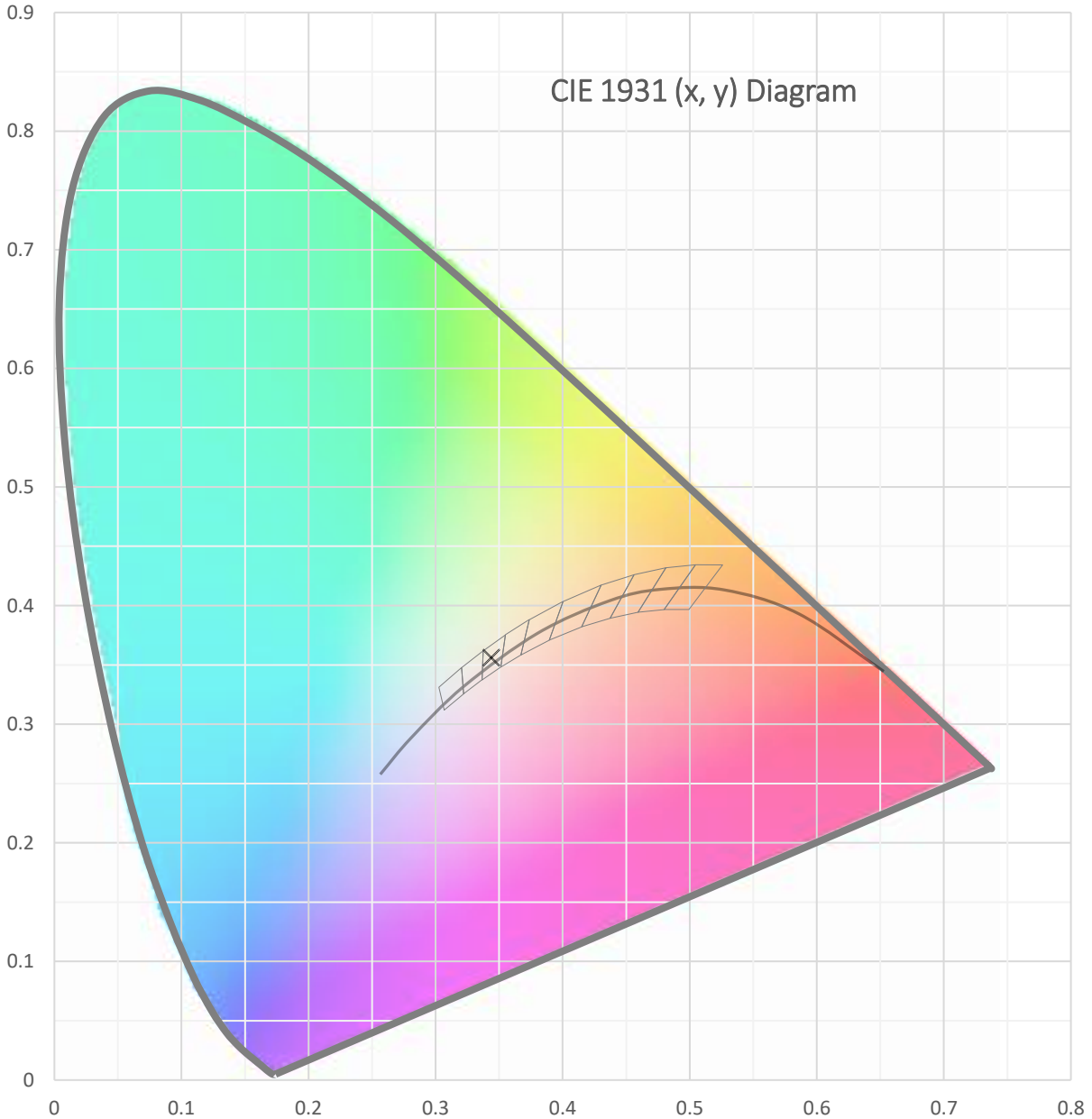
Topaz Lighting Corp  
925 Waverly Avenue  
Holtsville, NY 11742, USA

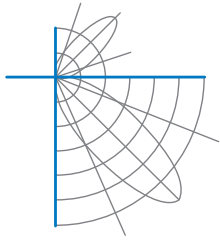
Test date: 12/27/2021  
Report date: 12/30/2021

Signed: \_\_\_\_\_

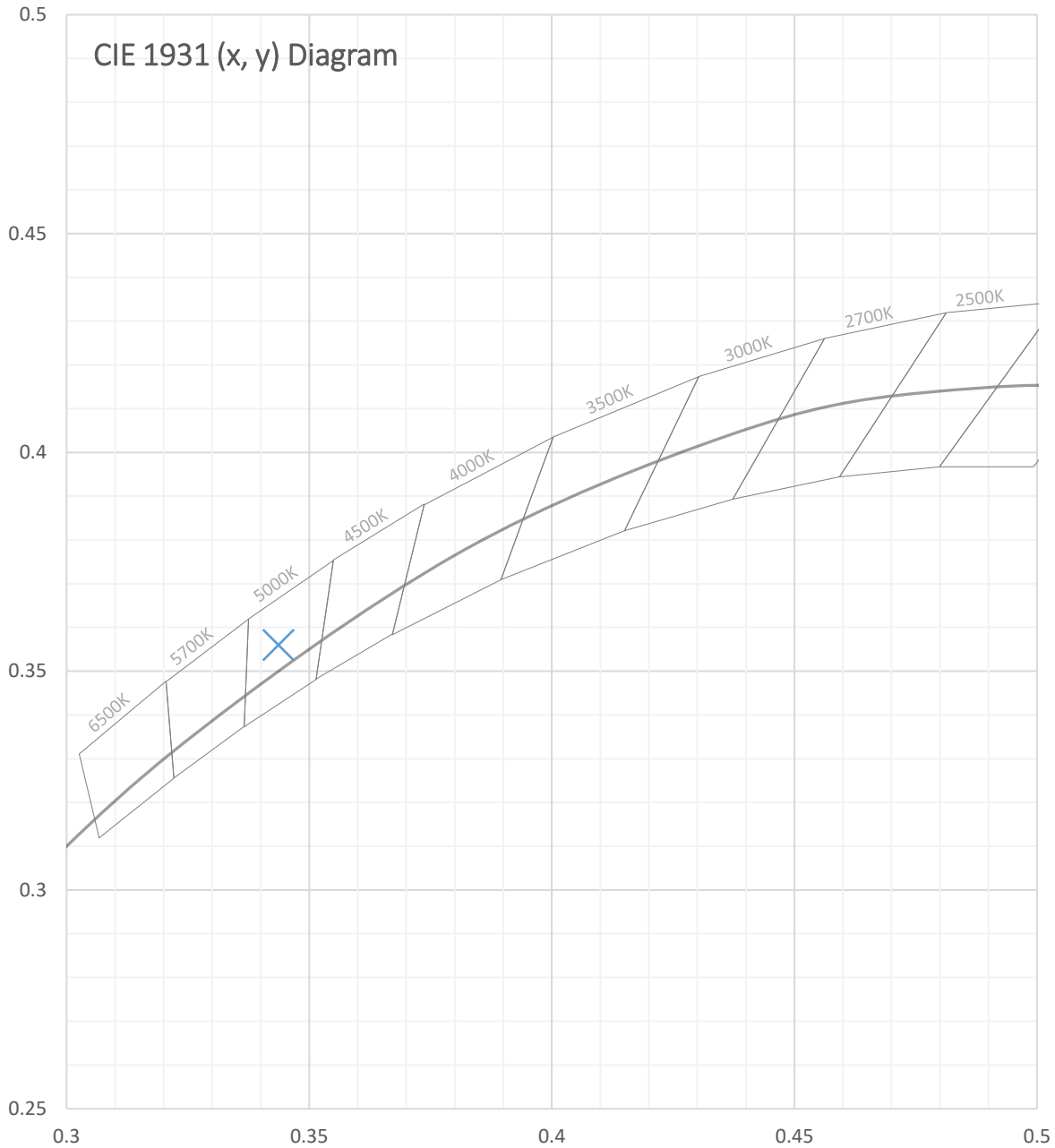


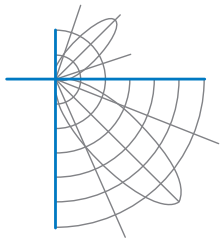
Test Report Number: LLIA001617-004





Test Report Number: LLIA001617-004





Test Report Number: LLIA001617-004

Total Radiant Flux	9.987 W
Total Luminous Flux	3214.2 Lm
Chromaticity CIE 1931 (x, y)	(0.3437, 0.3560)
Chromaticity CIE 1976 (u', v')	(0.2088, 0.4866)
Correlated Color Temperature (CCT)	5067 K
Color Rendering Index (Ra)	82
R1	80
R2	86
R3	91
R4	82
R5	81
R6	81
R7	86
R8	66
R9	2
R10	67
R11	82
R12	61
R13	81
R14	95
TM-30: Rf	81
TM-30: Rg	96
TM-30: Rcs,h1	-13
Distance from Planckian Locus (Duv)	0.0027
Scotopic/Photopic Ratio ‡	1.939

**Electrical Data**

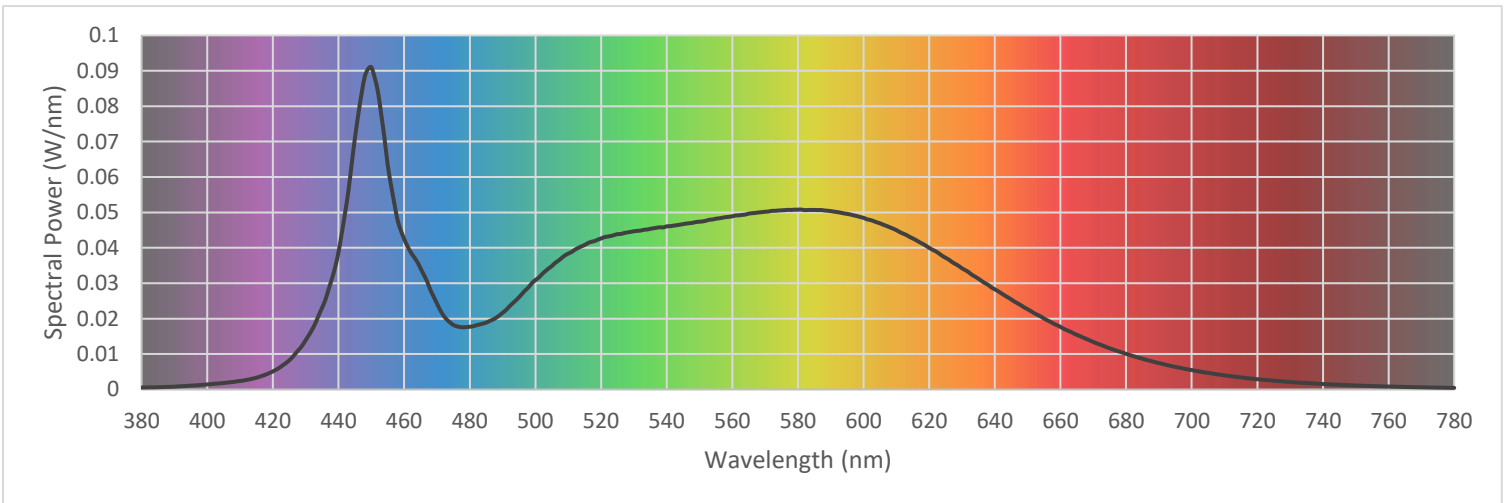
Voltage	120.0 Vac
Current	0.1720 A
Power	19.24 W
Frequency	59.99 Hz
Power Factor	0.932
Current THD	19.3 %



Test Report Number: LLIA001617-004

Summary Spectral Power Distribution (wavelength - nm, spectral power - W/nm)

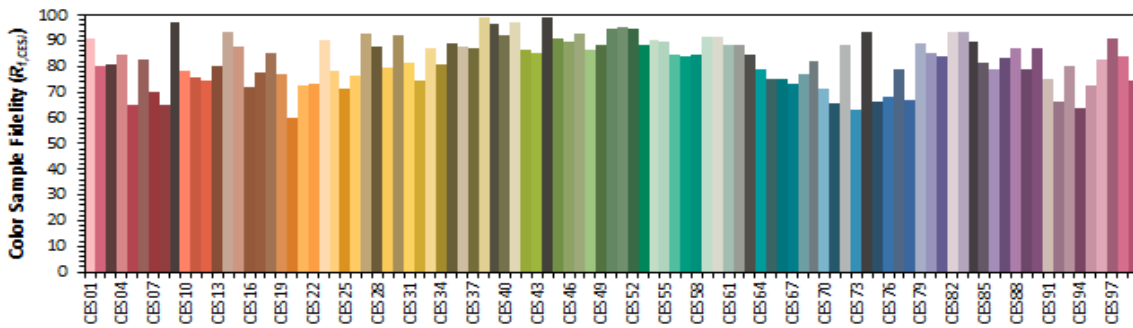
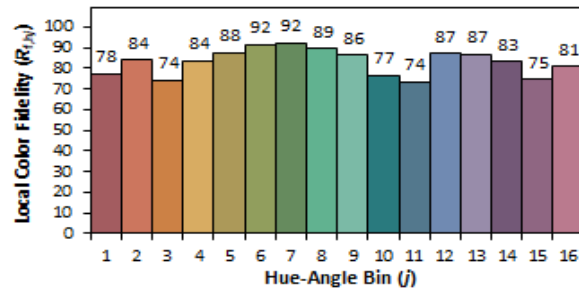
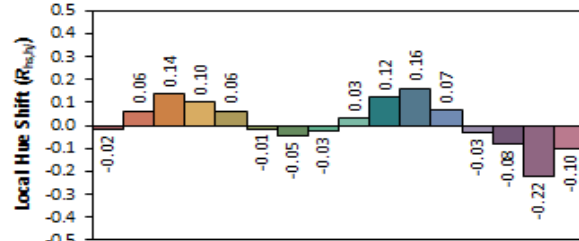
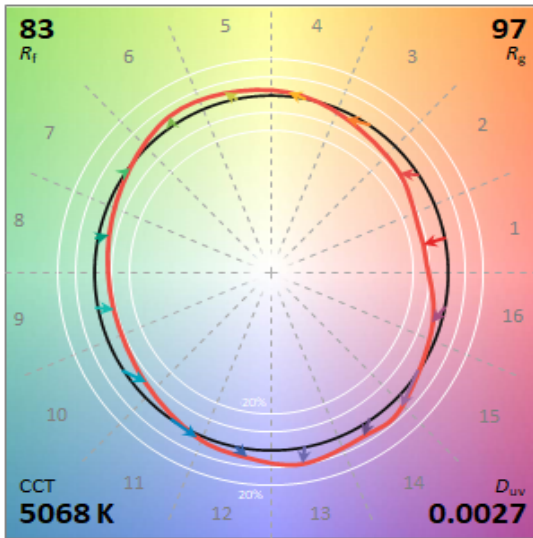
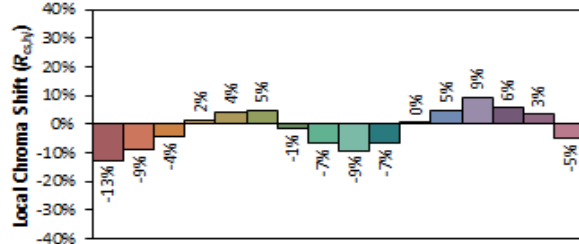
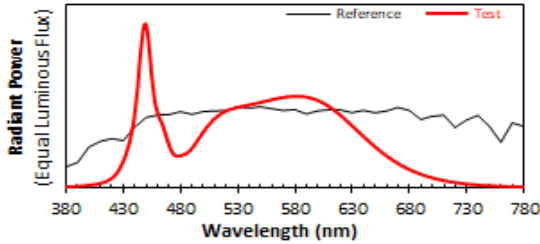
380	0.000559	480	0.017707	580	0.050779	680	0.010052
385	0.000634	485	0.018883	585	0.050700	685	0.008681
390	0.000788	490	0.021659	590	0.050375	690	0.007455
395	0.001081	495	0.026054	595	0.049590	695	0.006371
400	0.001429	500	0.030901	600	0.048472	700	0.005470
405	0.001821	505	0.034861	605	0.046926	705	0.004673
410	0.002385	510	0.038369	610	0.044996	710	0.003985
415	0.003319	515	0.040788	615	0.042650	715	0.003410
420	0.005109	520	0.042641	620	0.039984	720	0.002894
425	0.008247	525	0.043871	625	0.037177	725	0.002481
430	0.013952	530	0.044670	630	0.034213	730	0.002119
435	0.023123	535	0.045371	635	0.031282	735	0.001800
440	0.038904	540	0.046067	640	0.028272	740	0.001536
445	0.071084	545	0.046705	645	0.025439	745	0.001314
450	0.090976	550	0.047375	650	0.022654	750	0.001124
455	0.063303	555	0.048224	655	0.020012	755	0.000961
460	0.042470	560	0.048902	660	0.017667	760	0.000827
465	0.034195	565	0.049659	665	0.015418	765	0.000709
470	0.024237	570	0.050187	670	0.013410	770	0.000610
475	0.018198	575	0.050592	675	0.011630	775	0.000524
						780	0.000454



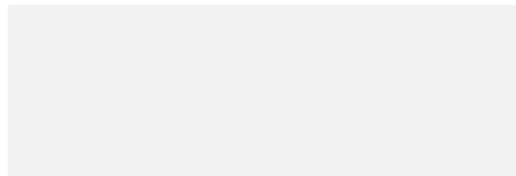


Test Report Number: LLIA001617-004

IES TM-30 Details



Notes:



x 0.3437  
y 0.3559  
u' 0.2088  
v' 0.4865

CIE 13.3-1995 (CRI)	
R <sub>a</sub>	82
R <sub>s</sub>	2



## Test Report Number: LLIA001617-004

**Test Equipment Configuration:** LightLab International Allentown 2m Integrating Sphere  
Measurements acquired using a Labsphere CDS 2600 spectroradiometer  
Testing was performed using  $4\pi$  geometry

**Test Temperature:** 24.8 °C

**Test Procedure:** Tested in accordance with the applicable sections of:  
LM-79-19, LM-78-20, LM-58-20, ANSI\_ANSI C78.377-2017, TM-30-20

**Significance:** The laboratory has not participated in the selection of samples to be tested.  
All testing is performed on the understanding that the significance of the report is limited to the extent that the test sample is representative of production units.

**Notes:** The measurements and other derived quantities contained in this report are based on the absolute data as measured.

Prorating the performance of the sample for the use of other component combinations (such as lamp / LED / Ballast / driver), or for use in different environmental conditions than that tested, may produce erroneous results.

This report is free of erasures and corrections

This report may contain data that are not covered by the NVLAP accreditation. Quantities marked with ‡ are not covered.

This report must not be used by the customer to claim product certification, approval or endorsement by NVLAP, NIST, or any agency of the Federal Government.