

Job Name/Title: _____

Model #: _____

Contractor: _____



Southwire™

STRUCTURAL ATTACHMENTS

BEAM/PURLIN

BEAM CLAMP, 316 STAINLESS STEEL

APPLICATION

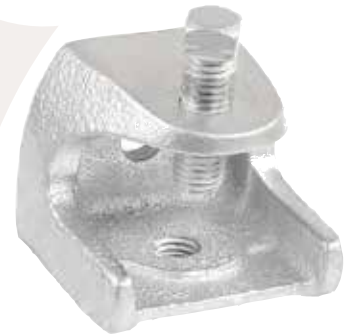
Stainless steel beam clamps are used to support conduit hangers, bridle rings and drop rods in harsh environments where corrosion is an issue.

FEATURES

Tapped holes on side and bottom

MATERIAL/FINISH

Body and Set Screw: Steel/316 Stainless



MBC-3816-SS

PART #	FLANGE THICKNESS	SIDE/BOTTOM THREADED HOLES	STATIC LOAD (LBS)	BOX QTY.
MBC-1420-SS	3/8"	1/4" – 20	250	50
MBC-3816-SS	3/8"	3/8" – 16	500	25

Rev. 0, 03/23

**BUILT FOR DURABILITY.
BUILT FOR RELIABILITY.
BUILT FOR WORK.™**

1-855-798-6657 | SOUTHWIRE.COM

©2023 Southwire Company, LLC. All rights reserved.
*Registered Trademark & ™Trademark of Southwire Company, LLC.