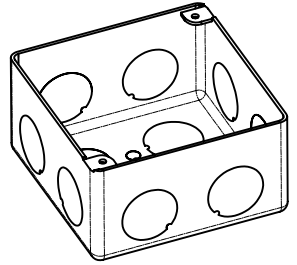
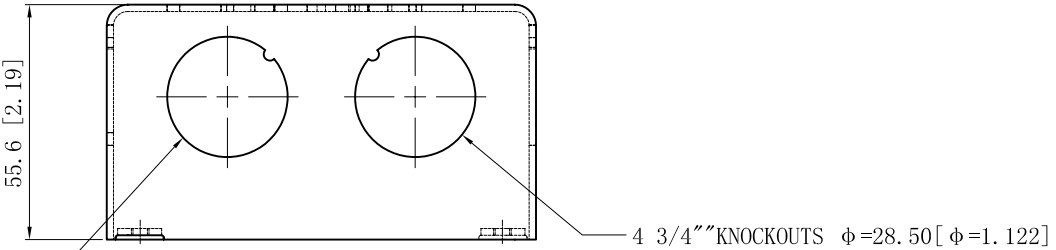


SIDES	BOTTOM
8 3/4" KNOCKOUTS	6 KNOCKOUTS
	3 1/2" KNOCKOUTS
	2 3/4" KNOCKOUTS
Material: Steel-0.0625"-G60 Galvanized	

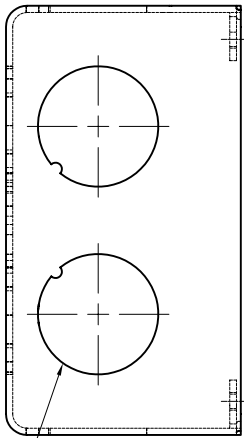


4 3/4" KNOCKOUTS  $\phi=28.50$  [ $\phi=1.122$ ]

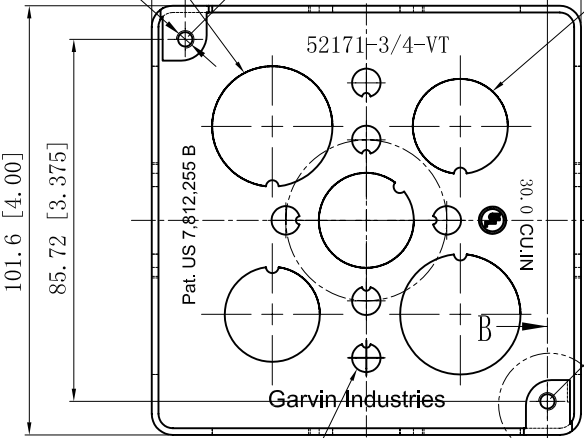
2 3/4" KNOCKOUTS  $\phi=28.50$  [ $\phi=1.122$ ]

2-#8-32 UNC HOLE

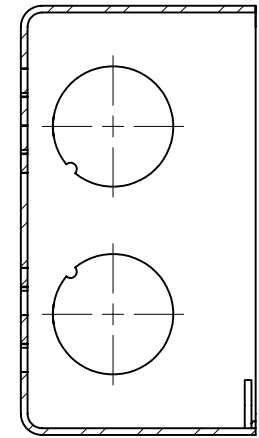
3 1/2" KNOCKOUTS  $\phi=22.50$  [ $\phi=0.886$ ]



4 3/4" KNOCKOUTS  $\phi=28.50$  [ $\phi=1.122$ ]



6 KNOCKOUTS  $\phi=6.75$  [ $\phi=0.27$ ]



CUTAWAY VIEW A-A

DESCRIPTION
Patent #: Pat. US 7,812,255 B
TRADE REFERENCE TERMS

This data sheet is for reference only. GARVIN INDUSTRIES reserves the right to make changes to the design without prior notice.

STANDARD PACKING	GARVIN INDUSTRIES		
	TITLE 4" SQUARE BOXES 2-1/8" DEEP		
25 PCS	SIZE	DWG NO.	REV
	A4	52171-3/4-VT	G
DATA SHEET			