

## Report of Test

**LLIA001646-008**

Integrating Sphere Report

Catalog Number: LWP-40WPCTS-EX39-G 30W, 5000K

Mogul-base retrofit lamp mounted horizontal and aimed down, formed plastic housing, formed aluminum heatsink, three clear plastic enclosures.

288 white LEDs; 144 CW, 144 WW on three circuit boards with 96 LEDs each  
Internal LED driver



### Performance Summary

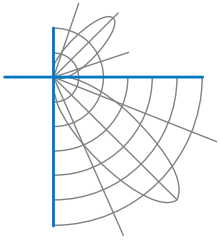
Voltage	120.0 Vac
Current	0.2534 A
Power	29.97 W
Frequency	59.99 Hz
Power Factor	0.985
Current THD	11.9 %
Total Luminous Flux	4826.6 lm
Efficacy	161.0 lm/W
Chromaticity (x,y)	(0.3419, 0.3547)
(u',v')	(0.2081, 0.4857)
Duv	0.0028
CCT	5133 K
CRI (Ra)	83
R9	11
TM-30: Rf	82
TM-30: Rg	95
TM-30: Rcs,h1	-12

Prepared For:

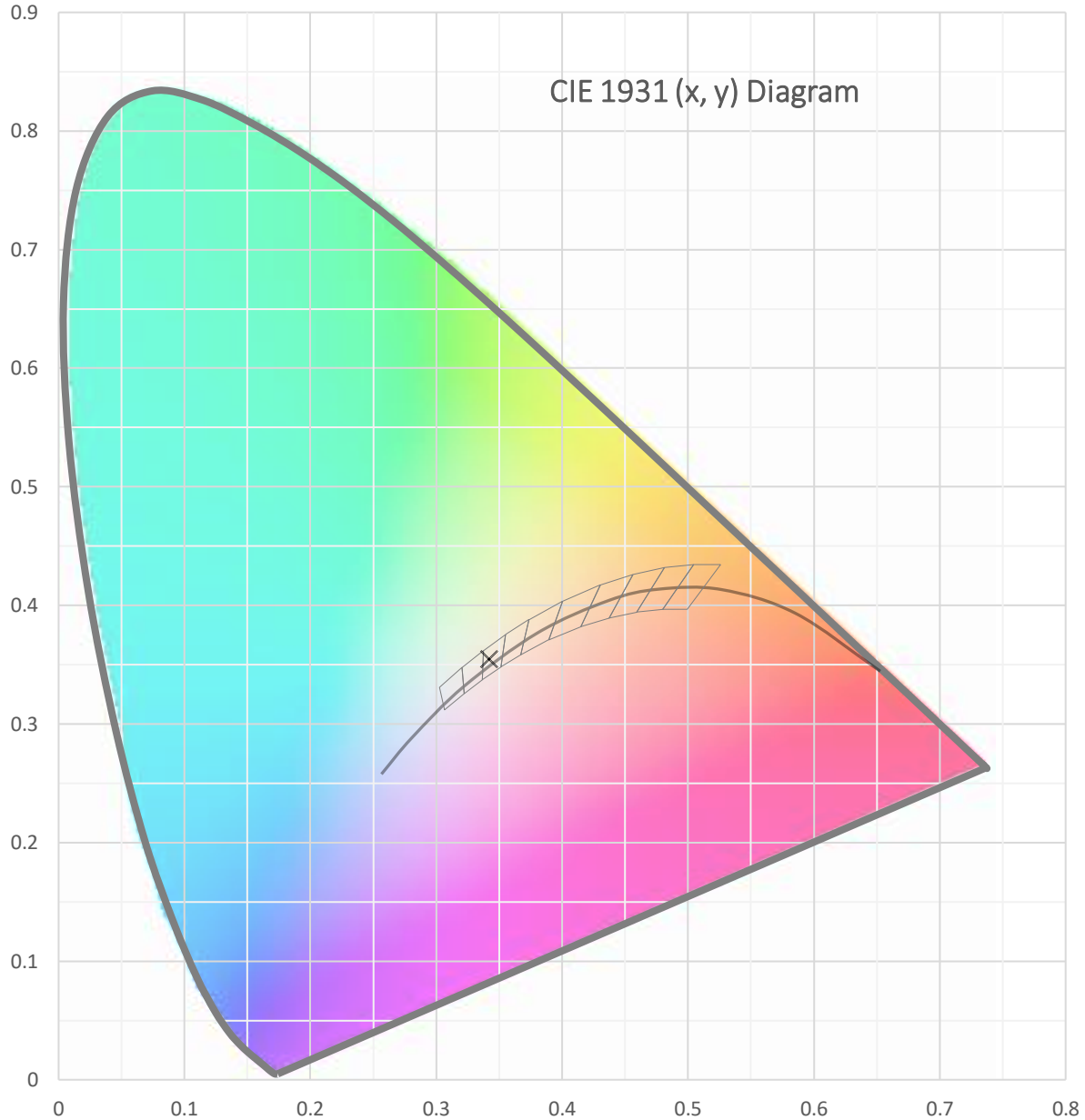
Topaz Lighting Corp  
925 Waverly Avenue  
Holtsville, NY 11742, USA

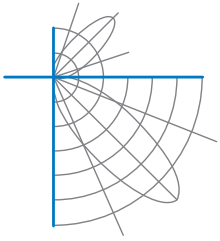
Test date: 01/31/2022  
Report date: 02/01/2022

Signed: \_\_\_\_\_

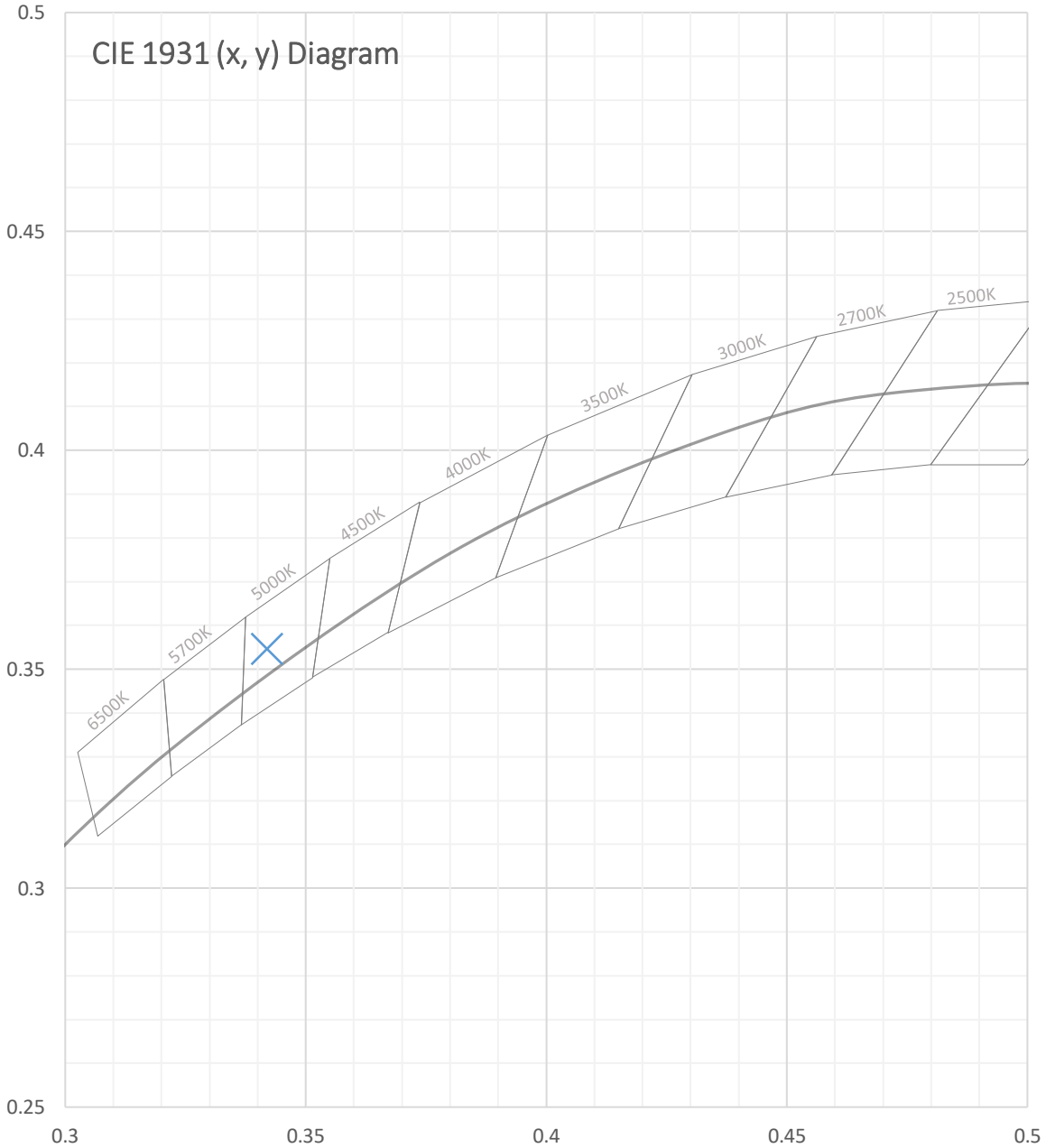


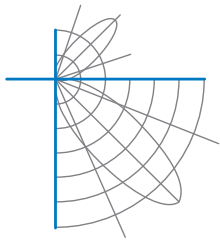
Test Report Number: LLIA001646-008





Test Report Number: LLIA001646-008





Test Report Number: LLIA001646-008

Total Radiant Flux	15.27 W
Total Luminous Flux	4826.6 Lm
Chromaticity CIE 1931 (x, y)	(0.3419, 0.3547)
Chromaticity CIE 1976 (u', v')	(0.2081, 0.4857)
Correlated Color Temperature (CCT)	5133 K
Color Rendering Index (Ra)	83
R1	82
R2	89
R3	93
R4	82
R5	82
R6	84
R7	88
R8	68
R9	11
R10	72
R11	81
R12	60
R13	84
R14	96
TM-30: Rf	82
TM-30: Rg	95
TM-30: Rcs,h1	-12
Distance from Planckian Locus (Duv)	0.0028
Scotopic/Photopic Ratio ‡	1.990

**Electrical Data**

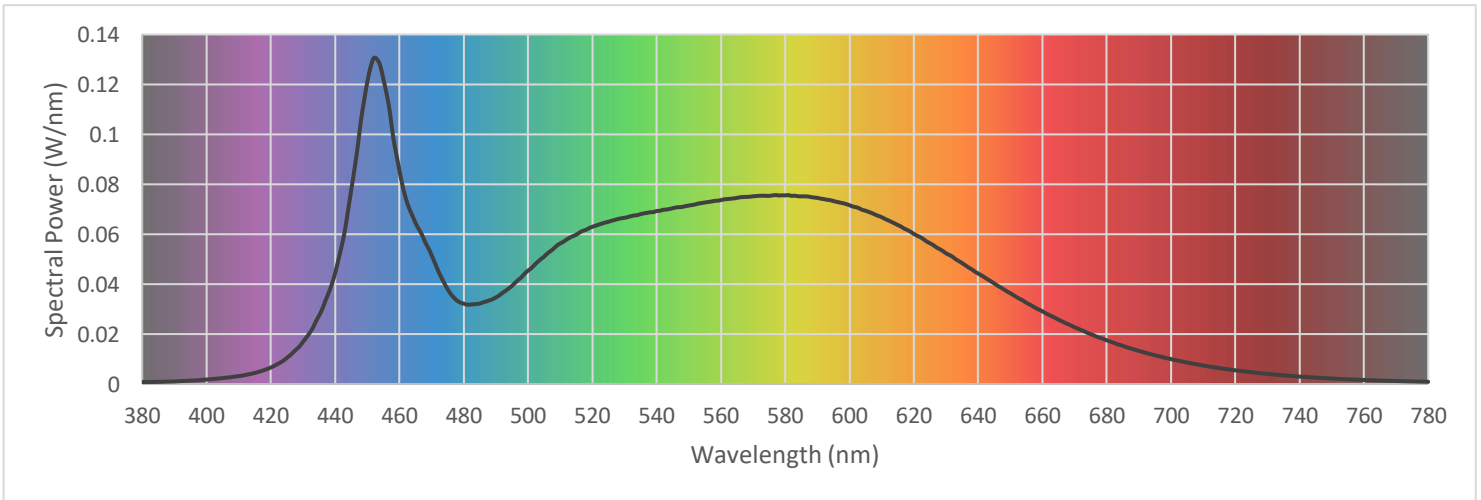
Voltage	120.0 Vac
Current	0.2534 A
Power	29.97 W
Frequency	59.99 Hz
Power Factor	0.985
Current THD	11.9 %

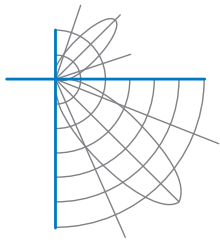


Test Report Number: LLIA001646-008

Summary Spectral Power Distribution (wavelength - nm, spectral power - W/nm)

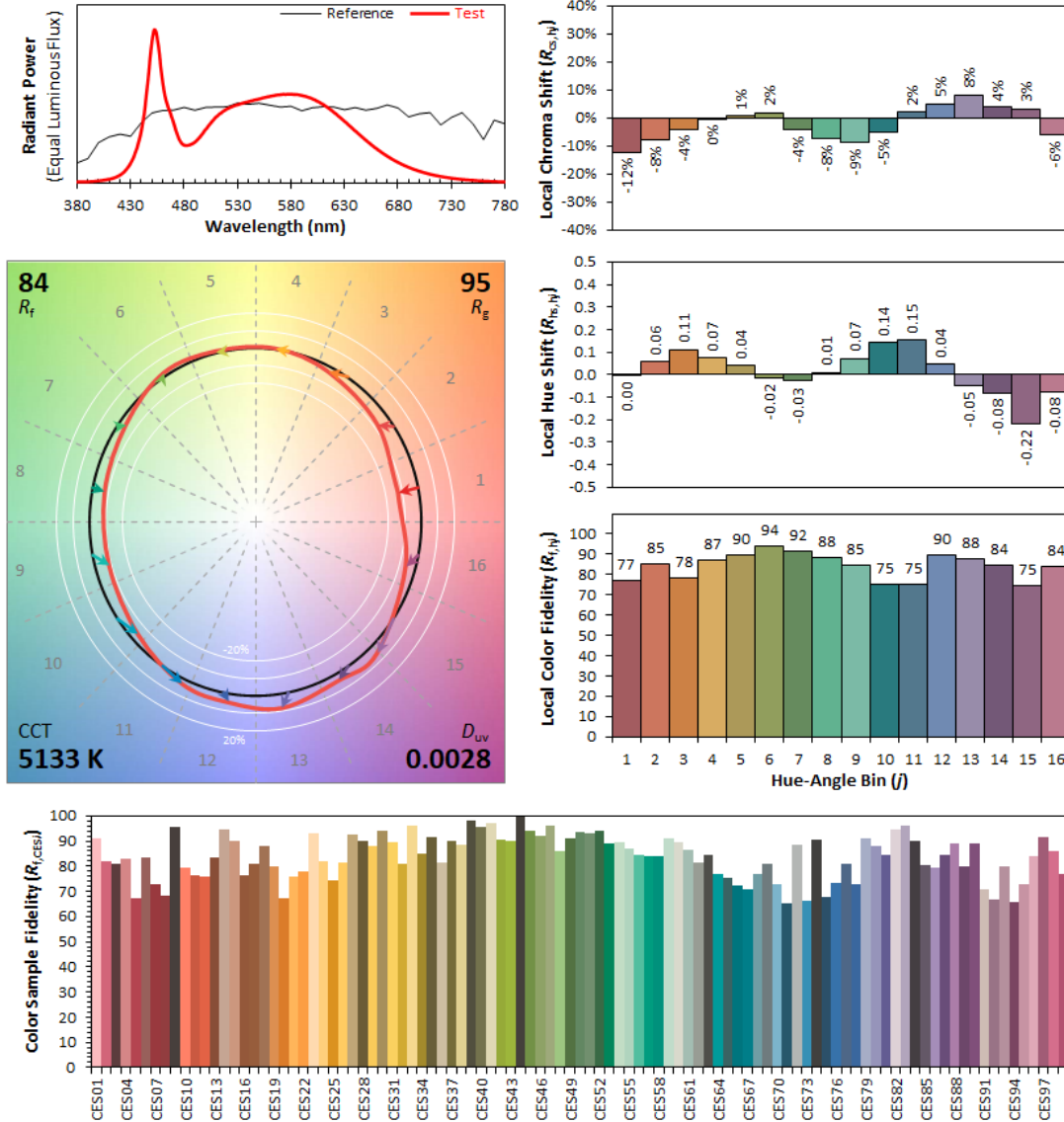
380	0.000760	480	0.032163	580	0.075527	680	0.017496
385	0.000845	485	0.032230	585	0.075150	685	0.015291
390	0.001016	490	0.034676	590	0.074530	690	0.013273
395	0.001362	495	0.039306	595	0.073266	695	0.011489
400	0.001782	500	0.045395	600	0.071598	700	0.009976
405	0.002360	505	0.051021	605	0.069394	705	0.008590
410	0.003163	510	0.056288	610	0.066814	710	0.007403
415	0.004408	515	0.059788	615	0.063679	715	0.006384
420	0.006608	520	0.062952	620	0.060124	720	0.005477
425	0.010482	525	0.064956	625	0.056383	725	0.004708
430	0.016874	530	0.066557	630	0.052339	730	0.004055
435	0.027413	535	0.068046	635	0.048428	735	0.003465
440	0.044413	540	0.069284	640	0.044264	740	0.002966
445	0.077650	545	0.070404	645	0.040303	745	0.002551
450	0.120945	550	0.071466	650	0.036371	750	0.002181
455	0.122123	555	0.072695	655	0.032543	755	0.001878
460	0.085505	560	0.073646	660	0.029112	760	0.001615
465	0.064505	565	0.074548	665	0.025781	765	0.001387
470	0.051591	570	0.075175	670	0.022737	770	0.001192
475	0.037896	575	0.075335	675	0.019964	775	0.001028
						780	0.000889



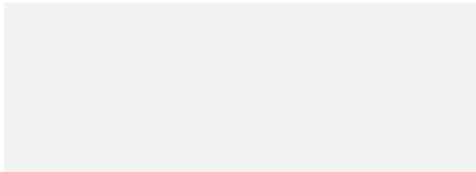


Test Report Number: LLIA001646-008

IES TM-30 Details



Notes:



x **0.3419**  
y **0.3546**  
u' **0.2081**  
v' **0.4856**

CIE 13.3-1995  
(CRI)  
 $R_a$  83  
 $R_g$  11



## Test Report Number: LLIA001646-008

**Test Equipment Configuration:** LightLab International Allentown 2m Integrating Sphere  
Measurements acquired using a Labsphere CDS 2600 spectroradiometer  
Testing was performed using  $4\pi$  geometry

**Test Temperature:** 24.9 °C

**Test Procedure:** Tested in accordance with the applicable sections of:  
LM-79-19, LM-78-20, LM-58-20, ANSI\_ANSLG C78.377-2017, TM-30-20

**Significance:** The laboratory has not participated in the selection of samples to be tested.  
All testing is performed on the understanding that the significance of the report is limited to the extent that the test sample is representative of production units.

**Notes:** The measurements and other derived quantities contained in this report are based on the absolute data as measured.

Prorating the performance of the sample for the use of other component combinations (such as lamp / LED / Ballast / driver), or for use in different environmental conditions than that tested, may produce erroneous results.

This report is free of erasures and corrections

This report may contain data that are not covered by the NVLAP accreditation. Quantities marked with ‡ are not covered.

This report must not be used by the customer to claim product certification, approval or endorsement by NVLAP, NIST, or any agency of the Federal Government.