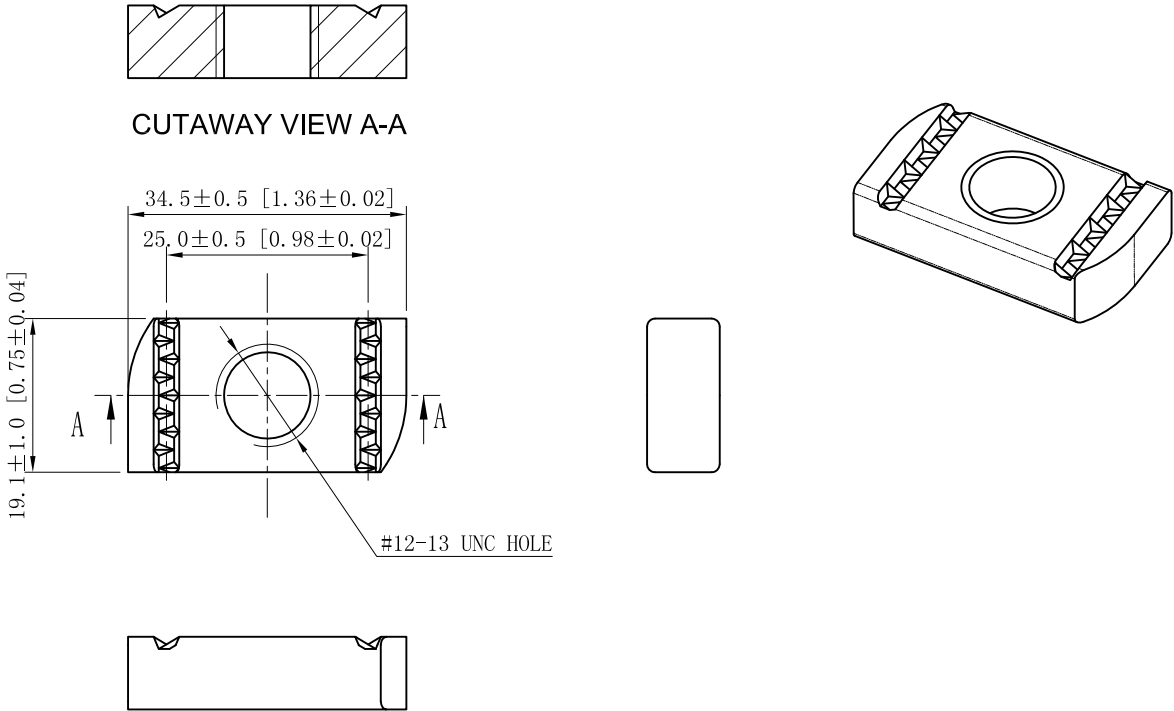


SIDES	BOTTOM
Material:Steel-0.385"- Q235, Zinc plated	



DESCRIPTION
TRADE REFERENCE TERMS

This data sheet is for reference only .GARVIN INDUSTRIES reserves the right to make changes to the design without prior notice.

STANDARD PACKING	GARVIN INDUSTRIES		
50 PCS	TITLE		
	SIZE	DWG NO.	REV
	A4	SNW01213	
DATA SHEET			