



# Southwire™

## BEAM/PURLIN

# CONDUIT TO BEAM CLIPS SIDE MOUNT

### APPLICATION

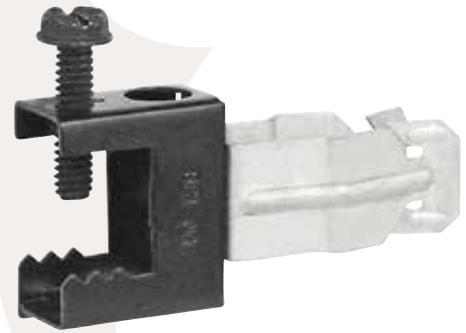
Push-in conduit hanger/beam clip assemblies are used when EMT or Rigid conduit must be attached below a structural beam.

### FEATURES

Riveted conduit hanger rotates 360° to accommodate various directions of conduit, perpendicular to beam edge

Light-duty beam clamp provides a 25 lbs. static load capacity

Additional 10-24 and 1/4"-20 mounting holes on beam clamp



**CHP-50-SM**



PART #	EMT	FLANGE SIZE	BOX QTY.
CHP-50-SM	1/2"	1/2"	50
CHP-75-SM	3/4"	1/2"	50
CHP-100-SM	1"	1/2"	50

Rev. 0, 03/23

**BUILT FOR DURABILITY.  
BUILT FOR RELIABILITY.  
BUILT FOR WORK.™**

**1-855-798-6657 | SOUTHWIRE.COM**

©2023 Southwire Company, LLC. All rights reserved.  
\*Registered Trademark & ™Trademark of Southwire Company, LLC.