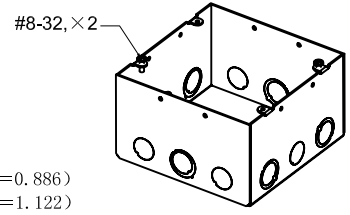
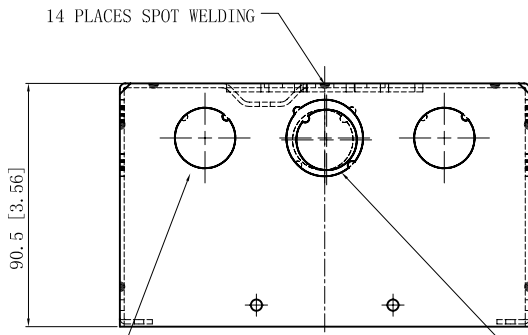
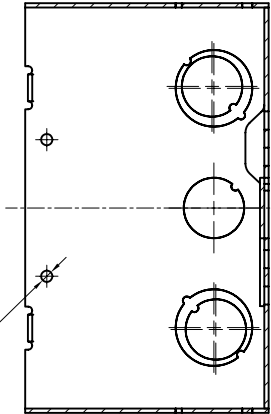


SIDES	BOTTOM
6 1/2" KNOCKOUTS	2 1/2" KNOCKOUTS
6 1/2"-3/4" KNOCKOUTS	2 3/4" KNOCKOUTS
	1 Ground hump
2 PCS 8-32x1/2 Screws Installed	
Material: Steel-0.0625"-G60 Galvanized	

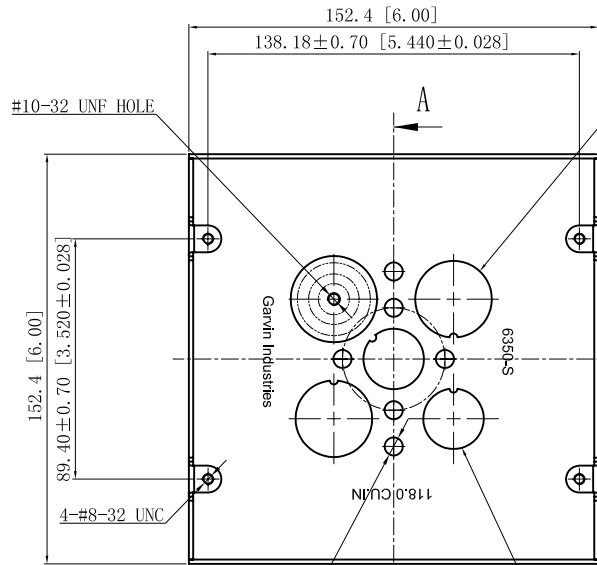


4 1/2" KNOCKOUT $\phi = 22.50$ ($\phi = 0.886$)

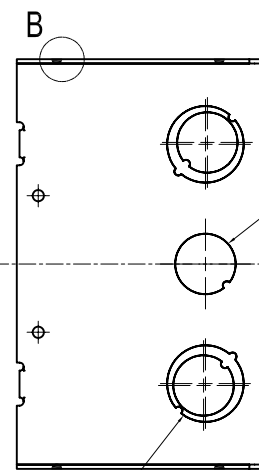
2 1/2-3/4" MOON KNOCKOUTS $\phi = 22.50$ ($\phi = 0.886$)
 $\phi = 28.50$ ($\phi = 1.122$)



CUTAWAY VIEW A-A



2 3/4" KNOCKOUTS $\phi = 28.50$ [$\phi = 1.122$]



2 1/2" KNOCKOUTS $\phi = 22.50$ [$\phi = 0.886$]

4 1/2-3/4" MOON KNOCKOUTS $\phi = 22.50$ ($\phi = 0.886$)
 $\phi = 28.50$ ($\phi = 1.122$)

2 1/2" KNOCKOUTS $\phi = 22.50$ [$\phi = 0.886$]

DESCRIPTION
TRADE REFERENCE TERMS

This data sheet is for reference only .GARVIN INDUSTRIES reserves the right to make changes to the design without prior notice.

STANDARD PACKING	GARVIN INDUSTRIES		
10 PCS	SIZE	DWG NO.	REV
	A4	6350-S	B
DATA SHEET			