



Southwire™

4" SQUARE DOUBLE GANG DEVICE RINGS

FEATURES

- Angled slots on the covers compensate for up to 12° of box misalignment on upright framing members

APPLICATIONS

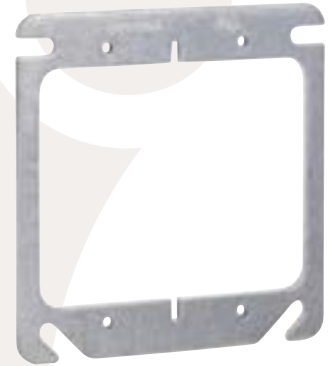
- 4" square single device rings are used with 4" square boxes to mount switches, receptacles and devices

STANDARD MATERIAL

- Galvanized steel or 316 Stainless Steel

CERTIFICATIONS

- UL, cULus Listed



52C20A



PART #	DESCRIPTION	RAISED	CUBIC INCHES (CM ³)	MASTER QTY.
52C20A	FOR DRYWALL FINISH	FLAT	---	50
52C20		1/4"	3.0 (49.2)	50
52C17		1/2"	5.5 (90.1)	50
52C18-5/8		5/8"	7.3 (119.6)	50
52C18		3/4"	8.8 (144.2)	50
52C19		1"	12.0 (196.6)	25
52C21		1-1/4"	15.0 (245.8)	25
52C24		1-1/2"	15.5 (253.9)	25
52C25		2"	20.5 (335.9)	25
52C20A-SS		FOR DRYWALL FINISH, 316 STAINLESS STEEL	FLAT	---
52C20-SS	1/4"		3.0 (49.2)	50
52C17-SS	1/2"		5.5 (90.1)	50
52C18-SS	3/4"		7.3 (119.6)	50
52C19-SS	1"		12.0 (196.6)	25
52C21-SS	1-1/4"		15.0 (245.8)	25
52C24-SS	1-1/2"		15.5 (253.9)	25

Rev. 1, 3/24

**BUILT FOR DURABILITY.
BUILT FOR RELIABILITY.
BUILT FOR WORK.™**

1-855-798-6657 | SOUTHWIRE.COM

©2024 Southwire Company, LLC. All rights reserved.
*Registered Trademark & ™Trademark of Southwire Company, LLC.



Southwire™

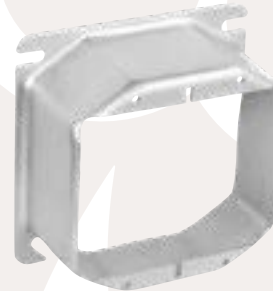
4" SQUARE DOUBLE GANG DEVICE RINGS



52C18-5/8



52C19



52C25

Rev. 1, 3/24

**BUILT FOR DURABILITY.
BUILT FOR RELIABILITY.
BUILT FOR WORK.™**

1-855-798-6657 | SOUTHWIRE.COM

©2024 Southwire Company, LLC. All rights reserved.
*Registered Trademark & ™Trademark of Southwire Company, LLC.