



Southwire®

SIMPUSH™

PUSH TO INSTALL CONDUIT FITTINGS

CATALOG



**BUILT FOR DURABILITY.
BUILT FOR RELIABILITY.
BUILT FOR WORK.™**

SOUTHWIRETOOLS.COM

OUR STORY

For over 60 years, Southwire has provided high quality electrical wire and cable to the commercial and industrial construction industries. Now, the name you trust provides durable, cutting-edge, professional grade tools, designed with safety and productivity in mind. Look to Southwire for solutions to all your electrical needs, from electrician's hand tools, meters, contractor equipment, temporary power and extension cords.

SOUTHWIRE, THE COMPANY

Southwire Company, LLC is North America's leading manufacturer of wire and cable used in the distribution and transmission of electricity. Throughout its history, our company has sought to help provide power through our products, our service and by helping empower our customers, employees, and communities.

SOUTHWIRE, THE PEOPLE

With more than 6,800 people at customer service centers, manufacturing facilities and sales offices throughout North America, we are dedicated to developing the highest-quality products and legendary service.

THE DRIVE FOR EXCELLENCE

Driving for excellence starts with being responsive to our customers and the markets we serve. By creating business units, Southwire Company enables each to foster an entrepreneurial spirit, innovative solutions, and responsiveness required in today's business. At the same time each division can leverage the resources and rich history of Southwire Company as a whole.

THE PRODUCTS

To be successful requires products that give you solutions no matter what stage of the project cycle you are in. Our product teams and dedicated resources work together to listen to and work with our customers, creating solutions that deliver unparalleled value through product innovation, safety and efficiency.

THE SERVICE

Service is more than a word or a phone number; it's a tangible support system that assists you through the entire project cycle. Starting with our own knowledgeable customer service team, to our National Field Sales team, and our District Merchandising Specialists. In the office or in the field, we're there to lend a hand, just when you need it most. Feel free to reach us at 1-855-SWTOOLS (855-798-6657)

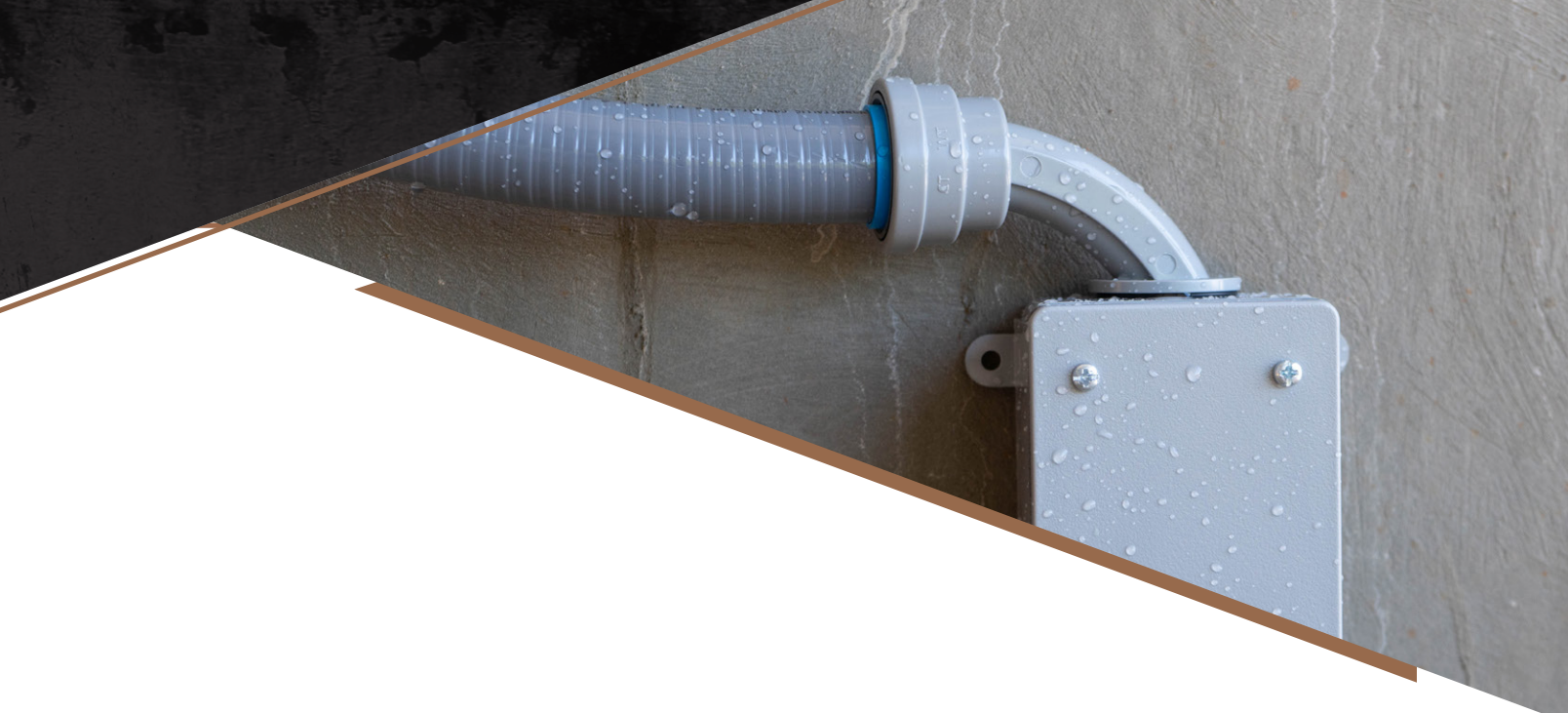


TABLE OF CONTENTS

SIMPush™ Features & Benefits	4
How SIMPush™ Fittings Work	5
EMT SIMPush™ Conduit Fittings.....	6
RIGID SIMPush™ Conduit Fittings	15
Liquid Tight SIMPush™ Conduit Fittings.....	23
PVC SIMPush™ Conduit Fittings	27
SIMPush™ Removal Tools.....	30
Spec Sheet	31
Cross Reference Sheet	32
Conduit Hanging Hardware	38
Conduit Bending and Wire Pulling.....	49

HOW TO ORDER

To order, please contact your Southwire Tools & Equipment sales representative or add to your next sales order.

SIMPush™ FEATURES & BENEFITS

PUSH INSTALL RIGID



NEVER THREAD CONDUIT AGAIN

- » Works with RMC, IMC, and galvanized conduit
- » Works with threaded and non-threaded conduit
- » Watertight
- » Removable & reusable with SIMPush™ removal tool
- » Maintains ground
- » IP66, NEMA 3S, direct burial

PUSH INSTALL EMT



FAST, NO TOOL INSTALLATION

- » Replaces compression and set screw fittings
- » No screws or moving parts to lose
- » Watertight couplings and connectors available
- » Removable & reusable with SIMPush™ removal tool
- » Maintains ground

PUSH INSTALL LIQUID TIGHT



FAST PUSH ON INSTALLATION

- » Watertight, concrete tight
- » Works with FLNM-B conduit
- » Removable & reusable with SIMPush™ removal tool
- » IP66, NEMA 3S, direct burial

PUSH INSTALL PVC



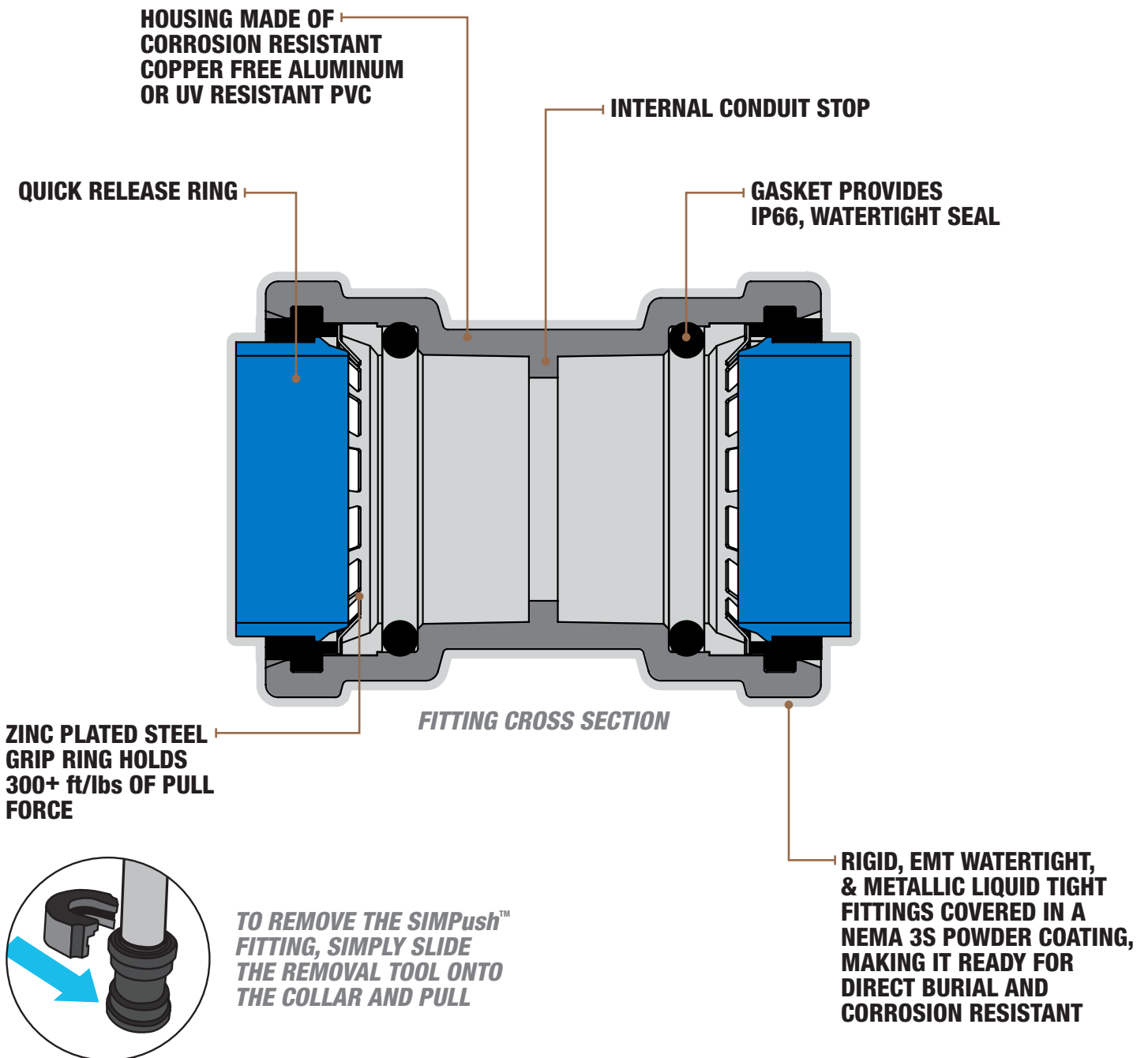
NO ADHESIVE NEEDED

- » Concrete tight and rated for burial
- » UV resistant resin
- » Removable & reusable with SIMPush™ removal tool
- » IP66, NEMA 3S, direct burial

HOW SIMPush™ FITTINGS WORK

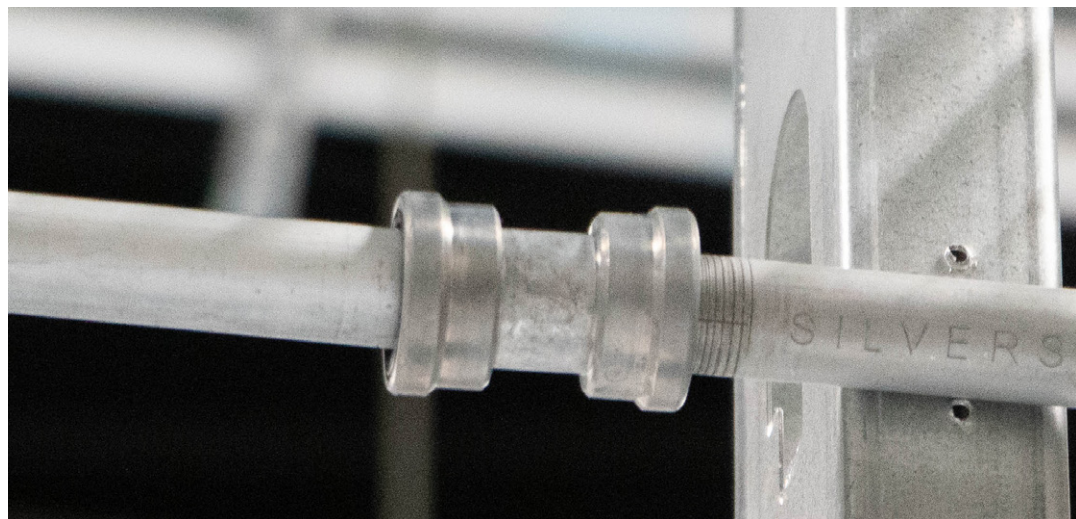
HOW SIMPush™ FITTINGS WORK

SIMPush™ fittings simply slide onto the conduit and lock in place. Below is a cross section of a coupling showing the steel locking teeth and interior gasket that make SIMPush™ fittings lock-on and seal out water and debris.



EMT SIMPush™ CONDUIT FITTINGS

- No tools required
- Wet location couplings and box connectors available
- Reusable, tested up to 100 removal cycles
- Replaces traditional screw and compression couplings
- Maintains grounding path
- cULus listed to standard 514B



EMT SIMPush™ CONDUIT FITTINGS

EMT COUPLINGS



Stock #	Model #	Trade Size	Quantity Per Bag	OVERALL PRODUCT DIMENSIONS			Associated Removal Tool Model #	Removal Tool Included
				H (in.)	W (in.)	L (in.)		
RETAIL POLY-BAG PACKAGING								
65070301	E-CP-050	1/2"	1	1.749	1.105	1.105	E-RT-1P	-
65070305	E-CP-050-Q5	1/2"	5	1.749	1.105	1.105	E-RT-1P	-
65070303	E-CP-050-Q20	1/2"	20	1.749	1.105	1.105	E-RT-1P	-
65070401	E-CP-075	3/4"	1	1.939	1.282	1.282	E-RT-1P	-
65070405	E-CP-075-Q5	3/4"	5	1.939	1.282	1.282	E-RT-1P	-
65070403	E-CP-075-Q20	3/4"	20	1.939	1.282	1.282	E-RT-1P	-
65070601	E-CP-100	1"	1	2.011	1.6	1.6	E-RT-2P	-
65070701	E-CP-125	1-1/4"	1	2.273	2.09	2.09	E-RT-2P	-
65070801	E-CP-150	1-1/2"	1	3.18	2.35	2.35	E-RT-3P	-
65070901	E-CP-200	2"	1	3.772	2.9	2.9	E-RT-3P	-
Stock #	Model #	Trade Size	Quantity Per Box	H (in.)	W (in.)	L (in.)	Associated Removal Tool Model #	Removal Tool Included
CONTRACTOR PACK								
65070302	E-CP-050WT	1/2"	40	1.749	1.105	1.105	E-RT-1P	YES
65070402	E-CP-075WT	3/4"	30	1.939	1.282	1.282	E-RT-1P	YES
65070602	E-CP-100WT	1"	20	2.011	1.6	1.6	E-RT-2P	YES
65070702	E-CP-125WT	1-1/4"	20	2.273	2.09	2.09	E-RT-2P	YES
65070802	E-CP-150WT	1-1/2"	12	3.18	2.35	2.35	E-RT-3P	YES
65070902	E-CP-200WT	2"	6	3.772	2.9	2.9	E-RT-3P	YES



EMT SIMPush™ CONDUIT FITTINGS

EMT BOX CONNECTOR



Stock #	Model #	Trade Size	Quantity Per Bag	OVERALL PRODUCT DIMENSIONS			Associated Removal Tool Model #	Removal Tool Included
				H (in.)	W (in.)	L (in.)		
RETAIL POLY-BAG PACKAGING								
65071001	E-BC-050	1/2"	1	1.559	1.105	1.105	E-RT-1P	-
65071003	E-BC-050-Q5	1/2"	5	1.559	1.105	1.105	E-RT-1P	-
65071101	E-BC-075	3/4"	1	1.673	1.31	1.31	E-RT-1P	-
65071103	E-BC-075-Q5	3/4"	5	1.673	1.31	1.31	E-RT-1P	-
65071201	E-BC-100	1"	1	1.84	1.8	1.8	E-RT-2P	-
65071401	E-BC-125	1-1/4"	1	2.129	2.09	2.09	E-RT-2P	-
65071501	E-BC-150	1-1/2"	1	2.59	2.35	2.35	E-RT-3P	-
65071601	E-BC-200	2"	1	2.915	2.9	2.9	E-RT-3P	-
Stock #	Model #	Trade Size	Quantity Per Box	H (in.)	W (in.)	L (in.)	Associated Removal Tool Model #	Removal Tool Included
CONTRACTOR PACK								
65071002	E-BC-050WT	1/2"	40	1.559	1.105	1.105	E-RT-1P	YES
65071102	E-BC-075WT	3/4"	30	1.673	1.31	1.31	E-RT-1P	YES
65071202	E-BC-100WT	1"	20	1.84	1.8	1.8	E-RT-2P	YES
65071402	E-BC-125WT	1-1/4"	20	2.129	2.09	2.09	E-RT-2P	YES
65071502	E-BC-150WT	1-1/2"	15	2.59	2.35	2.35	E-RT-3P	YES
65071602	E-BC-200WT	2"	8	2.915	2.9	2.9	E-RT-3P	YES



EMT PULL ELBOW



Stock #	Model #	Trade Size	Quantity Per Bag	OVERALL PRODUCT DIMENSIONS			Associated Removal Tool Model #	Removal Tool Included
				H (in.)	W (in.)	L (in.)		
RETAIL POLY-BAG PACKAGING								
65071701	E-PE-050	1/2"	1	2.534	2.535	1.105	E-RT-1P	-
65071801	E-PE-075	3/4"	1	2.981	2.981	1.282	E-RT-1P	-
65071901	E-PE-100	1"	1	3.633	3.633	1.6	E-RT-2P	-
Stock #	Model #	Trade Size	Quantity Per Box	H (in.)	W (in.)	L (in.)	Associated Removal Tool Model #	Removal Tool Included
CONTRACTOR PACK								
65071702	E-PE-050WT	1/2"	25	2.534	2.535	1.105	E-RT-1P	YES
65071802	E-PE-075WT	3/4"	15	2.981	2.981	1.282	E-RT-1P	YES
65071902	E-PE-100WT	1"	7	3.633	3.633	1.6	E-RT-2P	YES
65072002	E-PE-125WT	1-1/4"	6	4.323	4.323	2.09	E-RT-2P	YES



EMT PULL ELBOW CONNECTOR



Stock #	Model #	Trade Size	Quantity Per Bag	OVERALL PRODUCT DIMENSIONS			Associated Removal Tool Model #	Removal Tool Included
				H (in.)	W (in.)	L (in.)		
RETAIL POLY-BAG PACKAGING								
65072201	E-PB-050	1/2"	1	2.51	2.522	1.105	E-RT-1P	-
65072301	E-PB-075	3/4"	1	2.981	2.882	1.282	E-RT-1P	-
Stock #	Model #	Trade Size	Quantity Per Box	H (in.)	W (in.)	L (in.)	Associated Removal Tool Model #	Removal Tool Included
CONTRACTOR PACK								
65072202	E-PB-050WT	1/2"	25	2.51	2.522	1.105	E-RT-1P	YES
65072302	E-PB-075WT	3/4"	15	2.981	2.882	1.282	E-RT-1P	YES
65072402	E-PB-100WT	1"	7	3.677	3.622	1.6	E-RT-2P	YES
65072502	E-PB-125WT	1-1/4"	6	4.515	4.378	2.09	E-RT-2P	YES



EMT SIMPush™ CONDUIT FITTINGS

EMT PULL OFFSET CONNECTOR



Stock #	Model #	Trade Size	Quantity Per Bag	OVERALL PRODUCT DIMENSIONS			Associated Removal Tool Model #	Removal Tool Included
				H (in.)	W (in.)	L (in.)		
RETAIL POLY-BAG PACKAGING								
65072601	E-OC-050	1/2"	1	2.292	1.33	1.105	E-RT-1P	-
65072701	E-OC-075	3/4"	1	3.118	2.036	1.282	E-RT-1P	-
65072801	E-OC-100	1"	1	3.32	2.268	1.6	E-RT-2P	-
Stock #	Model #	Trade Size	Quantity Per Box	H (in.)	W (in.)	L (in.)	Associated Removal Tool Model #	Removal Tool Included
CONTRACTOR PACK								
65072602	E-OC-050WT	1/2"	30	2.292	1.33	1.105	E-RT-1P	YES
65072702	E-OC-075WT	3/4"	18	3.118	2.036	1.282	E-RT-1P	YES
65072802	E-OC-100WT	1"	12	3.32	2.268	1.6	E-RT-2P	YES



EMT TO LIQUID TIGHT COMBINATION COUPLINGS



Stock #	Model #	Trade Size	Quantity Per Bag	OVERALL PRODUCT DIMENSIONS			Associated Removal Tool Model #	Removal Tool Included
				H (in.)	W (in.)	L (in.)		
RETAIL POLY-BAG PACKAGING								
65072901	E-FC-050	1/2"	1	1.891	1.209	1.209	E-RT-1P, LT-RT-1P	-
Stock #	Model #	Trade Size	Quantity Per Box	H (in.)	W (in.)	L (in.)	Associated Removal Tool Model #	Removal Tool Included
CONTRACTOR PACK								
65072902	E-FC-050W	1/2"	20	1.891	1.209	1.209	E-RT-1P, LT-RT-1P	NO
65073002	E-FC-075W	3/4"	15	2.056	1.411	1.411	E-RT-1P, LT-RT-1P	NO



EMT INSIDE ELBOW



Stock #	Model #	Trade Size	Quantity Per Bag	OVERALL PRODUCT DIMENSIONS			Associated Removal Tool Model #	Removal Tool Included
				H (in.)	W (in.)	L (in.)		
RETAIL POLY-BAG PACKAGING								
65073101	E-IE-050	1/2"	1	2.315	1.893	1.105	E-RT-1P	-
65073201	E-IE-075	3/4"	1	2.684	2.121	1.282	E-RT-1P	-
Stock #	Model #	Trade Size	Quantity Per Box	H (in.)	W (in.)	L (in.)	Associated Removal Tool Model #	Removal Tool Included
CONTRACTOR PACK								
65073102	E-IE-050WT	1/2"	15	2.315	1.893	1.105	E-RT-1P	YES
65073202	E-IE-075WT	3/4"	12	2.684	2.121	1.282	E-RT-1P	YES



EMT LB CONDUIT BODY



Stock #	Model #	Trade Size	Quantity Per Bag	OVERALL PRODUCT DIMENSIONS			Associated Removal Tool Model #	Removal Tool Included
				H (in.)	W (in.)	L (in.)		
RETAIL POLY-BAG PACKAGING								
65074001	E-LB-050	1/2"	1	4.67	2.521	1.31	E-RT-1P	-
65074101	E-LB-075	3/4"	1	5.505	2.855	1.53	E-RT-1P	-
65074201	E-LB-100	1"	1	6.216	3.151	1.74	E-RT-2P	-
Stock #	Model #	Trade Size	Quantity Per Box	H (in.)	W (in.)	L (in.)	Associated Removal Tool Model #	Removal Tool Included
CONTRACTOR PACK								
65074002	E-LB-050W	1/2"	8	4.67	2.521	1.31	E-RT-1P	-
65074102	E-LB-075W	3/4"	6	5.505	2.855	1.53	E-RT-1P	-
65074202	E-LB-100W	1"	4	6.216	3.151	1.74	E-RT-2P	-
65074302	E-LB-125W	1-1/4"	3	8.064	4.212	2.49	E-RT-2P	-
65074402	E-LB-150W	1-1/2"	3	8.335	4.633	2.49	E-RT-3P	-
65074502	E-LB-200W	2"	1	10.756	5.478	3.1	E-RT-3P	-



EMT SIMPush™ CONDUIT FITTINGS

EMT C CONDUIT BODY



Stock #	Model #	Trade Size	Quantity Per Bag	OVERALL PRODUCT DIMENSIONS			Associated Removal Tool Model #	Removal Tool Included
				H (in.)	W (in.)	L (in.)		
RETAIL POLY-BAG PACKAGING								
65076001	E-CB-050	1/2"	1	5.47	1.659	1.31	E-RT-1P	
65076101	E-CB-075	3/4"	1	6.339	1.899	1.53	E-RT-1P	-
Stock #	Model #	Trade Size	Quantity Per Box	H (in.)	W (in.)	L (in.)	Associated Removal Tool Model #	Removal Tool Included
CONTRACTOR PACK								
65076002	E-CB-050W	1/2"	8	5.47	1.659	1.31	E-RT-1P	-
65076102	E-CB-075W	3/4"	6	6.339	1.899	1.53	E-RT-1P	-
65076302	E-CB-100W	1"	6	6.862	2.159	1.74	E-RT-2P	-
65076402	E-CB-125W	1-1/4"	4	8.898	3.109	2.49	E-RT-2P	-
65076502	E-CB-150W	1-1/2"	4	9.44	3.109	2.49	E-RT-3P	-



EMT LR CONDUIT BODY



Stock #	Model #	Trade Size	Quantity Per Bag	OVERALL PRODUCT DIMENSIONS			Associated Removal Tool Model #	Removal Tool Included
				H (in.)	W (in.)	L (in.)		
RETAIL POLY-BAG PACKAGING								
65074602	E-LR-050W	1/2"	8	4.67	1.659	2.165	E-RT-1P	-
65074802	E-LR-075W	3/4"	6	5.505	1.899	2.487	E-RT-1P	-
65074902	E-LR-100W	1"	4	6.116	2.159	2.748	E-RT-2P	-
65075002	E-LR-125W	1-1/4"	4	8.064	3.109	3.589	E-RT-2P	-
65075102	E-LR-150W	1-1/2"	3	8.335	3.109	4.01	E-RT-3P	-
65075202	E-LR-200W	2"	1	10.756	3.669	4.964	E-RT-3P	-



EMT LL CONDUIT BODY



Stock #	Model #	Trade Size	Quantity Per Bag	OVERALL PRODUCT DIMENSIONS			Associated Removal Tool Model #	Removal Tool Included
				H (in.)	W (in.)	L (in.)		
RETAIL POLY-BAG PACKAGING								
65075302	E-LL-050W	1/2"	8	4.67	1.659	2.165	E-RT-1P	-
65075502	E-LL-075W	3/4"	6	5.505	1.899	2.487	E-RT-1P	-
65075602	E-LL-100W	1"	4	6.116	2.159	2.748	E-RT-2P	-
65075702	E-LL-125W	1-1/4"	4	8.064	3.109	3.589	E-RT-2P	-
65075802	E-LL-150W	1-1/2"	3	8.335	3.109	4.016	E-RT-3P	-
65075902	E-LL-200W	2"	1	10.756	3.669	4.925	E-RT-3P	-



EMT T CONDUIT BODY



Stock #	Model #	Trade Size	Quantity Per Bag	OVERALL PRODUCT DIMENSIONS			Associated Removal Tool Model #	Removal Tool Included
				H (in.)	W (in.)	L (in.)		
RETAIL POLY-BAG PACKAGING								
65073301	E-TB-050	1/2"	1	5.47	2.165	1.634	E-RT-1P	-
65073401	E-TB-075	3/4"	1	6.34	2.48	1.874	E-RT-1P	-
Stock #	Model #	Trade Size	Quantity Per Box	H (in.)	W (in.)	L (in.)	Associated Removal Tool Model #	Removal Tool Included
CONTRACTOR PACK								
65073302	E-TB-050W	1/2"	4	5.47	2.165	1.634	E-RT-1P	-
65073402	E-TB-075W	3/4"	4	6.34	2.48	1.874	E-RT-1P	-
65073502	E-TB-100W	1"	4	6.862	2.726	2.134	E-RT-2P	-
65073602	E-TB-125W	1-1/4"	4	8.898	3.589	3.104	E-RT-2P	-
65073702	E-TB-150W	1-1/2"	1	9.44	4.01	3.104	E-RT-3P	-
65073802	E-TB-200W	2"	1	12.052	4.906	3.664	E-RT-3P	-



EMT WATERTIGHT COUPLING



Stock #	Model #	Trade Size	Quantity Per Bag	OVERALL PRODUCT DIMENSIONS			Associated Removal Tool Model #	Removal Tool Included
				H (in.)	W (in.)	L (in.)		
RETAIL POLY-BAG PACKAGING								
65073302	EW-CP-050	1/2"	1	1.956	1.209	1.209	E-RT-1P	-
65073402	EW-CP-075	3/4"	1	2.075	1.411	1.411	E-RT-1P	-
Stock #	Model #	Trade Size	Quantity Per Box	H (in.)	W (in.)	L (in.)	Associated Removal Tool Model #	Removal Tool Included
CONTRACTOR PACK								
65076602	EW-CP-050WT	1/2"	30	1.956	1.209	1.209	EW-RT-1P	YES
65076702	EW-CP-075WT	3/4"	20	2.075	1.411	1.411	EW-RT-1P	YES
65076802	EW-CP-100WT	1"	16	2.201	1.779	1.779	EW-RT-100	YES



EMT WATERTIGHT CONNECTOR



Stock #	Model #	Trade Size	Quantity Per Bag	OVERALL PRODUCT DIMENSIONS			Associated Removal Tool Model #	Removal Tool Included
				H (in.)	W (in.)	L (in.)		
RETAIL POLY-BAG PACKAGING								
65076902	EW-BC-050	1/2"	1	1.663	1.209	1.209	E-RT-1P	-
65077102	EW-BC-075	3/4"	1	1.663	1.411	1.411	E-RT-1P	-
Stock #	Model #	Trade Size	Quantity Per Box	H (in.)	W (in.)	L (in.)	Associated Removal Tool Model #	Removal Tool Included
CONTRACTOR PACK								
65076902	EW-BC-050WT	1/2"	30	1.663	1.209	1.209	EW-RT-1P	YES
65077102	EW-BC-075WT	3/4"	20	1.663	1.411	1.411	EW-RT-1P	YES
65077202	EW-BC-100WT	1"	12	2.009	1.779	1.779	EW-RT-100	YES



RIGID SIMPush™ ***CONDUIT FITTINGS***

- Never thread conduit again, fast, simple push to install
- IP66, NEMA3S, watertight, concrete tight, rated for direct burial
- Works with UL certified rigid, IMC, and GRC conduit
- Works with cut or threaded rigid and GRC ends
- Maintains grounding path
- cULus listed to standard 514B
- Manufactured with corrosion resistant copper free aluminum and powder coated for excellent durability
- Reusable, tested for up to 100 removal cycles



RIGID SIMPush™ CONDUIT FITTINGS

RIGID COUPLING



Stock #	Model #	Trade Size	Quantity Per Bag	OVERALL PRODUCT DIMENSIONS			Associated Removal Tool Model #	Removal Tool Included
				H (in.)	W (in.)	L (in.)		
RETAIL POLY-BAG PACKAGING								
65077301	R-CP-050	1/2"	1	3.14	1.299	1.299	R-RT-1P	-
65077303	R-CP-050-Q5	1/2"	5	3.14	1.299	1.299	R-RT-1P	-
65077401	R-CP-075	3/4"	1	3.19	1.499	1.499	R-RT-1P	-
65077403	R-CP-075-Q5	3/4"	5	3.19	1.499	1.499	R-RT-1P	-
65077501	R-CP-100	1"	1	3.57	1.795	1.795	R-RT-2P	-
65077601	R-CP-125	1-1/4"	1	4.078	2.286	2.286	R-RT-2P	-
65077701	R-CP-150	1-1/2"	1	4.158	2.56	2.56	R-RT-3P	-
65077801	R-CP-200	2"	1	4.408	3.06	3.06	R-RT-3P	-
Stock #	Model #	Trade Size	Quantity Per Box	H (in.)	W (in.)	L (in.)	Associated Removal Tool Model #	Removal Tool Included
CONTRACTOR PACK								
65077302	R-CP-050WT	1/2"	30	3.14	1.299	1.299	R-RT-1P	YES
65077402	R-CP-075WT	3/4"	20	3.19	1.499	1.499	R-RT-1P	YES
65077502	R-CP-100WT	1"	18	3.57	1.795	1.795	R-RT-2P	YES
65077602	R-CP-125WT	1-1/4"	12	4.078	2.286	2.286	R-RT-2P	YES
65077702	R-CP-150WT	1-1/2"	9	4.158	2.56	2.56	R-RT-3P	YES
65077802	R-CP-200WT	2"	4	4.408	3.06	3.06	R-RT-3P	YES



RIGID CONNECTOR



OVERALL PRODUCT DIMENSIONS



Stock #	Model #	Trade Size	Quantity Per Bag	H (in.)	W (in.)	L (in.)	Associated Removal Tool Model #	Removal Tool Included
RETAIL POLY-BAG PACKAGING								
65077901	R-BC-050	1/2"	1	2.235	1.298	1.298	R-RT-1P	-
65078001	R-BC-075	3/4"	1	2.264	1.498	1.498	R-RT-1P	-
65078101	R-BC-100	1"	1	2.64	1.795	1.795	R-RT-2P	-
65078201	R-BC-125	1-1/4"	1	3	2.29	2.29	R-RT-2P	-
65078301	R-BC-150	1-1/2"	1	3.436	2.566	2.566	R-RT-3P	-
65078401	R-BC-200	2"	1	3.6	3.06	3.06	R-RT-3P	-
Stock #	Model #	Trade Size	Quantity Per Box	H (in.)	W (in.)	L (in.)	Associated Removal Tool Model #	Removal Tool Included
CONTRACTOR PACK								
65077902	R-BC-050WT	1/2"	35	2.235	1.298	1.298	R-RT-1P	YES
65078002	R-BC-075WT	3/4"	25	2.264	1.498	1.498	R-RT-1P	YES
65078102	R-BC-100WT	1"	15	2.64	1.795	1.795	R-RT-2P	YES
65078202	R-BC-125WT	1-1/4"	10	3	2.29	2.29	R-RT-2P	YES
65078302	R-BC-150WT	1-1/2"	6	3.436	2.566	2.566	R-RT-3P	YES
65078402	R-BC-200WT	2"	5	3.6	3.06	3.06	R-RT-3P	YES

RIGID SIMPush™ CONDUIT FITTINGS

RIGID PULL ELBOW



Stock #	Model #	Trade Size	Quantity Per Bag	OVERALL PRODUCT DIMENSIONS			Associated Removal Tool Model #	Removal Tool Included
				H (in.)	W (in.)	L (in.)		
RETAIL POLY-BAG PACKAGING								
65078501	R-PE-050	1/2"	1	3.16	3.16	1.298	R-RT-1P	-
65078601	R-PE-075	3/4"	1	3.549	3.549	1.653	R-RT-1P	-
65078701	R-PE-100	1"	1	4.433	4.433	1.93	R-RT-2P	-
Stock #	Model #	Trade Size	Quantity Per Box	H (in.)	W (in.)	L (in.)	Associated Removal Tool Model #	Removal Tool Included
CONTRACTOR PACK								
65078502	R-PE-050WT	1/2"	18	3.16	3.16	1.298	R-RT-1P	YES
65078602	R-PE-075WT	3/4"	8	3.549	3.549	1.653	R-RT-1P	YES
65078702	R-PE-100WT	1"	6	4.433	4.433	1.93	R-RT-2P	YES
65078902	R-PE-125WT	1-1/4"	4	5.354	5.354	2.42	R-RT-2P	YES



RIGID PULL ELBOW CONNECTOR



Stock #	Model #	Trade Size	Quantity Per Bag	OVERALL PRODUCT DIMENSIONS			Associated Removal Tool Model #	Removal Tool Included
				H (in.)	W (in.)	L (in.)		
RETAIL POLY-BAG PACKAGING								
65079001	R-PB-050	1/2"	1	3.159	3.159	1.298	R-RT-1P	-
65079101	R-PB-075	3/4"	1	3.54	3.54	1.653	R-RT-1P	-
Stock #	Model #	Trade Size	Quantity Per Box	H (in.)	W (in.)	L (in.)	Associated Removal Tool Model #	Removal Tool Included
CONTRACTOR PACK								
65079002	R-PB-050WT	1/2"	12	3.159	3.159	1.298	R-RT-1P	YES
65079102	R-PB-075WT	3/4"	8	3.54	3.54	1.653	R-RT-1P	YES
65079202	R-PB-100WT	1"	6	4.419	4.419	1.929	R-RT-2P	YES
65079302	R-PB-125WT	1-1/4"	4	5.35	5.35	2.42	R-RT-2P	YES



RIGID REDUCER COUPLING



Stock #	Model #	Trade Size	Quantity Per Bag	OVERALL PRODUCT DIMENSIONS			Associated Removal Tool Model #	Removal Tool Included
				H (in.)	W (in.)	L (in.)		
RETAIL POLY-BAG PACKAGING								
65079501	R-RD-075-050	1/2" -3/4"	1	3.28	1.653	1.653	R-RT-1P	-
65079701	R-RD-100-050	1/2"-1"	1	3.51	1.411	1.411	R-RT-1P, R-RT-2P	-
65079801	R-RD-100-075	3/4" -1"	1	3.55	1.929	1.929	R-RT-1P, R-RT-2P	-
Stock #	Model #	Trade Size	Quantity Per Box	H (in.)	W (in.)	L (in.)	Associated Removal Tool Model #	Removal Tool Included
CONTRACTOR PACK								
65079502	R-RD-075-050W	1/2" -3/4"	20	3.28	1.653	1.653	R-RT-1P	-
65079702	R-RD-100-050W	1/2"-1"	20	3.51	1.411	1.411	R-RT-1P, R-RT-2P	-
65079802	R-RD-100-075W	3/4" -1"	10	3.55	1.929	1.929	R-RT-1P, R-RT-2P	-
65079902	R-RD-125-100W	1-1/4"-1"	12	4.03	2.249	2.249	R-RT-2P	-
65080002	R-RD-150-100W	1-1/2"-1"	12	4.056	2.522	2.522	R-RT-2P, R-RT-3P	-



RIGID T CONDUIT BODY



Stock #	Model #	Trade Size	Quantity Per Bag	OVERALL PRODUCT DIMENSIONS			Associated Removal Tool Model #	Removal Tool Included
				H (in.)	W (in.)	L (in.)		
RETAIL POLY-BAG PACKAGING								
65080101	R-TB-050	1/2"	1	6.801	2.208	2.83	R-RT-1P	-
65080201	R-TB-075	3/4"	1	7.56	2.463	3.09	R-RT-1P	-
65080301	R-TB-100	1"	1	8.6	2.969	3.328	R-RT-2P	-
Stock #	Model #	Trade Size	Quantity Per Box	H (in.)	W (in.)	L (in.)	Associated Removal Tool Model #	Removal Tool Included
CONTRACTOR PACK								
65080102	R-TB-050W	1/2"	4	6.801	2.208	2.83	R-RT-1P	-
65080202	R-TB-075W	3/4"	4	7.56	2.463	3.09	R-RT-1P	-
65080302	R-TB-100W	1"	4	8.6	2.969	3.328	R-RT-2P	-
65080502	R-TB-125W	1-1/4"	3	10.82	3.976	4.53	R-RT-2P	-
65080602	R-TB-150W	1-1/2"	3	10.88	4.192	4.56	R-RT-3P	-
65080702	R-TB-200W	2"	1	12.99	5.041	5.31	R-RT-3P	-



RIGID SIMPush™ CONDUIT FITTINGS

RIGID LB CONDUIT BODY



Stock #	Model #	Trade Size	Quantity Per Bag	OVERALL PRODUCT DIMENSIONS			Associated Removal Tool Model #	Removal Tool Included
				H (in.)	W (in.)	L (in.)		
RETAIL POLY-BAG PACKAGING								
65080801	R-LB-050	1/2"	1	5.336	1.31	3.06	R-RT-1P	-
65080901	R-LB-075	3/4"	1	6	1.53	3.34	R-RT-1P	-
65081001	R-LB-100	1"	1	6.81	1.74	3.83	R-RT-2P	-
65081101	R-LB-125	1-1/4"	1	8.89	2.49	5.03	R-RT-2P	-
65081301	R-LB-150	1-1/2"	1	8.84	2.49	5.06	R-RT-3P	-
65081401	R-LB-200	2"	1	11.05	3.1	5.76	R-RT-3P	-
Stock #	Model #	Trade Size	Quantity Per Box	H (in.)	W (in.)	L (in.)	Associated Removal Tool Model #	Removal Tool Included
CONTRACTOR PACK								
65080802	R-LB-050W	1/2"	4	5.336	1.31	3.06	R-RT-1P	-
65080902	R-LB-075W	3/4"	4	6	1.53	3.34	R-RT-1P	-
65081002	R-LB-100W	1"	4	6.81	1.74	3.83	R-RT-2P	-
65081102	R-LB-125W	1-1/4"	4	8.89	2.49	5.03	R-RT-2P	-
65081302	R-LB-150W	1-1/2"	4	8.84	2.49	5.06	R-RT-3P	-
65081402	R-LB-200W	2"	1	11.05	3.1	5.76	R-RT-3P	-



RIGID LR CONDUIT BODY



Stock #	Model #	Trade Size	Quantity Per Bag	OVERALL PRODUCT DIMENSIONS			Associated Removal Tool Model #	Removal Tool Included
				H (in.)	W (in.)	L (in.)		
RETAIL POLY-BAG PACKAGING								
65081501	R-LR-050	1/2"	1	5.34	2.83	1.4	R-RT-1P	-
65081601	R-LR-075	3/4"	1	6.11	3.09	1.64	R-RT-1P	-
Stock #	Model #	Trade Size	Quantity Per Box	H (in.)	W (in.)	L (in.)	Associated Removal Tool Model #	Removal Tool Included
CONTRACTOR PACK								
65081502	R-LR-050W	1/2"	4	5.34	2.83	1.4	R-RT-1P	-
65081602	R-LR-075W	3/4"	4	6.11	3.09	1.64	R-RT-1P	-
65081702	R-LR-100W	1"	4	6.99	3.33	1.9	R-RT-2P	-
65081802	R-LR-125W	1-1/4"	3	9.02	4.53	2.85	R-RT-2P	-
65081902	R-LR-150W	1-1/2"	3	9.05	4.56	2.85	R-RT-3P	-



RIGID LL CONDUIT BODY



Stock #	Model #	Trade Size	Quantity Per Bag	OVERALL PRODUCT DIMENSIONS			Associated Removal Tool Model #	Removal Tool Included
				H (in.)	W (in.)	L (in.)		
RETAIL POLY-BAG PACKAGING								
65082101	R-LL-050	1/2"	1	5.34	2.83	1.4	R-RT-1P	-
65082201	R-LL-075	3/4"	1	6.11	3.09	1.64	R-RT-1P	-
Stock #	Model #	Trade Size	Quantity Per Box	H (in.)	W (in.)	L (in.)	Associated Removal Tool Model #	Removal Tool Included
CONTRACTOR PACK								
65082102	R-LL-050W	1/2"	4	5.34	2.83	1.4	R-RT-1P	-
65082202	R-LL-075W	3/4"	4	6.11	3.09	1.64	R-RT-1P	-
65082302	R-LL-100W	1"	4	6.99	3.33	1.9	R-RT-2P	-
65082402	R-LL-125W	1-1/4"	3	9.02	4.53	2.85	R-RT-2P	-
65082502	R-LL-150W	1-1/2"	3	9.05	4.56	2.85	R-RT-3P	-



RIGID C CONDUIT BODY



Stock #	Model #	Trade Size	Quantity Per Bag	OVERALL PRODUCT DIMENSIONS			Associated Removal Tool Model #	Removal Tool Included
				H (in.)	W (in.)	L (in.)		
RETAIL POLY-BAG PACKAGING								
65082601	R-CB-050	1/2"	1	6.8	1.31	1.3	R-RT-1P	-
65082701	R-CB-075	3/4"	1	7.56	1.53	1.499	R-RT-1P	-
Stock #	Model #	Trade Size	Quantity Per Box	H (in.)	W (in.)	L (in.)	Associated Removal Tool Model #	Removal Tool Included
CONTRACTOR PACK								
65082602	R-CB-050W	1/2"	8	6.8	1.31	1.3	R-RT-1P	-
65082702	R-CB-075W	3/4"	6	7.56	1.53	1.499	R-RT-1P	-
65082802	R-CB-100W	1"	6	8.605	1.74	1.7	R-RT-2P	-
65082902	R-CB-125W	1-1/4"	4	10.818	2.49	2.29	R-RT-2P	-



RIGID SIMPush™ CONDUIT FITTINGS

RIGID OFFSET NIPPLE CONNECTOR



Stock #	Model #	Trade Size	Quantity Per Bag	OVERALL PRODUCT DIMENSIONS			Associated Removal Tool Model #	Removal Tool Included
				H (in.)	W (in.)	L (in.)		
RETAIL POLY-BAG PACKAGING								
65083001	R-ON-050	1/2"	1	3.018	1.298	2.221	R-RT-1P	-
65083101	R-ON-075	3/4"	1	3.775	1.653	2.436	R-RT-1P	-
65083201	R-ON-100	1"	1	4.132	1.929	2.94	R-RT-2P	-
Stock #	Model #	Trade Size	Quantity Per Box	H (in.)	W (in.)	L (in.)	Associated Removal Tool Model #	Removal Tool Included
CONTRACTOR PACK								
65083002	R-ON-050WT	1/2"	12	3.018	1.298	2.221	R-RT-1P	YES
65083102	R-ON-075WT	3/4"	10	3.775	1.653	2.436	R-RT-1P	YES
65083202	R-ON-100WT	1"	7	4.132	1.929	2.94	R-RT-2P	YES
65083302	R-ON-125WT	1-1/4"	4	4.374	2.42	3.104	R-RT-2P	YES

RIGID TO EMT COUPLING



Stock #	Model #	Trade Size	Quantity Per Bag	OVERALL PRODUCT DIMENSIONS			Associated Removal Tool Model #	Removal Tool Included
				H (in.)	W (in.)	L (in.)		
RETAIL POLY-BAG PACKAGING								
65079402	R-E-075W	3/4"	15	2.707	1.653	1.653	R-RT-1P, E-RT-1P	-

LIQUID TIGHT SIMPush™ CONDUIT FITTINGS

- Simple, fast push on installation
- Works with Type B Liquid Tight Conduit
- Reusable, tested up to 100 removal cycles
- IP66, NEMA3S, watertight, concrete tight, rated for direct burial
- Manufactured with UV resistant PVC



LIQUID TIGHT SIMPush™ CONDUIT FITTINGS

NON-METALLIC LIQUID TIGHT COUPLING



Stock #	Model #	Trade Size	Quantity Per Bag	OVERALL PRODUCT DIMENSIONS			Associated Removal Tool Model #	Removal Tool Included
				H (in.)	W (in.)	L (in.)		
RETAIL POLY-BAG PACKAGING								
67599601	LTNM-CP-050	1/2"	1	2.325	1.419	1.419	PLT-RT-1P	-
67599701	LTNM-CP-075	3/4"	1	2.437	1.653	1.653	PLT-RT-1P	-
67599801	LTNM-CP-100	1"	1	2.543	1.929	1.929	PLT-RT-100	-
Stock #	Model #	Trade Size	Quantity Per Box	H (in.)	W (in.)	L (in.)	Associated Removal Tool Model #	Removal Tool Included
CONTRACTOR PACK								
67599602	LTNM-CP-050WT	1/2"	30	2.325	1.419	1.419	PLT-RT-1P	YES
67599702	LTNM-CP-075WT	3/4"	24	2.437	1.653	1.653	PLT-RT-1P	YES
67599802	LTNM-CP-100WT	1"	20	2.543	1.929	1.929	PLT-RT-100	YES



NON-METALLIC LIQUID TIGHT CONNECTOR



Stock #	Model #	Trade Size	Quantity Per Bag	OVERALL PRODUCT DIMENSIONS			Associated Removal Tool Model #	Removal Tool Included
				H (in.)	W (in.)	L (in.)		
RETAIL POLY-BAG PACKAGING								
67599901	LTNM-BC-050	1/2"	1	1.797	1.425	1.425	PLT-RT-1P	-
67599903	LTNM-BC-050-Q5	1/2"	5	1.797	1.425	1.425	PLT-RT-1P	-
67600001	LTNM-BC-075	3/4"	1	1.836	1.653	1.653	PLT-RT-1P	-
67600003	LTNM-BC-075-Q5	3/4"	5	1.836	1.653	1.653	PLT-RT-1P	-
67600101	LTNM-BC-100	1"	1	1.941	1.929	1.929	PLT-RT-100	-
Stock #	Model #	Trade Size	Quantity Per Box	H (in.)	W (in.)	L (in.)	Associated Removal Tool Model #	Removal Tool Included
CONTRACTOR PACK								
67599902	LTNM-BC-050WT	1/2"	35	1.797	1.425	1.425	PLT-RT-1P	YES
67600002	LTNM-BC-075WT	3/4"	30	1.836	1.653	1.653	PLT-RT-1P	YES
67600102	LTNM-BC-100WT	1"	20	2.2	1.929	1.929	PLT-RT-100	YES



LIQUID TIGHT SIMPush™ CONDUIT FITTINGS

NON-METALLIC LIQUID TIGHT 90° CONNECTOR



Stock #	Model #	Trade Size	Quantity Per Bag	OVERALL PRODUCT DIMENSIONS			Associated Removal Tool Model #	Removal Tool Included
				H (in.)	W (in.)	L (in.)		
RETAIL POLY-BAG PACKAGING								
67600201	LTNM-90-050	1/2"	1	2.735	1.419	2.735	PLT-RT-1P	-
67600203	LTNM-90-050-Q5	1/2"	5	2.735	1.419	2.735	PLT-RT-1P	-
67600301	LTNM-90-075	3/4"	1	2.985	1.653	2.985	PLT-RT-1P	-
67600401	LTNM-90-100	1"	1	3.254	1.929	3.254	PLT-RT-100	-
Stock #	Model #	Trade Size	Quantity Per Box	H (in.)	W (in.)	L (in.)	Associated Removal Tool Model #	Removal Tool Included
CONTRACTOR PACK								
67600202	LTNM-90-050WT	1/2"	24	2.735	1.419	2.735	PLT-RT-1P	YES
67600302	LTNM-90-075WT	3/4"	15	2.985	1.653	2.985	PLT-RT-1P	YES
67600402	LTNM-90-100WT	1"	9	3.254	1.929	3.254	PLT-RT-100	YES



METALLIC LIQUID TIGHT CONNECTOR



Stock #	Model #	Trade Size	Quantity Per Bag	OVERALL PRODUCT DIMENSIONS			Associated Removal Tool Model #	Removal Tool Included
				H (in.)	W (in.)	L (in.)		
RETAIL POLY-BAG PACKAGING								
67600501	LT-BC-050	1/2"	1	1.663	1.209	1.209	LT-RT-1P	-
67600601	LT-BC-075	3/4"	1	1.663	1.411	1.411	LT-RT-1P	-
67600801	LT-BC-100	1"	1	2.009	1.779	1.779	LT-RT-100	-
Stock #	Model #	Trade Size	Quantity Per Box	H (in.)	W (in.)	L (in.)	Associated Removal Tool Model #	Removal Tool Included
CONTRACTOR PACK								
67600502	LT-BC-050WT	1/2"	30	1.663	1.209	1.209	LT-RT-1P	YES
67600602	LT-BC-075WT	3/4"	18	1.663	1.411	1.411	LT-RT-1P	YES
67600802	LT-BC-100WT	1"	20	2.009	1.779	1.779	LT-RT-100	YES



LIQUID TIGHT SIMPush™ CONDUIT FITTINGS

METALLIC LIQUID TIGHT 90° CONNECTOR



Stock #	Model #	Trade Size	Quantity Per Bag	OVERALL PRODUCT DIMENSIONS			Associated Removal Tool Model #	Removal Tool Included
				H (in.)	W (in.)	L (in.)		
RETAIL POLY-BAG PACKAGING								
67600901	LT-90-050	1/2"	1	2.625	1.209	2.625	LT-RT-1P	-
67601001	LT-90-075	3/4"	1	2.851	1.411	2.851	LT-RT-1P	-
67601101	LT-90-100	1"	1	3.112	1.779	3.112	LT-RT-100	-
Stock #	Model #	Trade Size	Quantity Per Box	H (in.)	W (in.)	L (in.)	Associated Removal Tool Model #	Removal Tool Included
CONTRACTOR PACK								
67600902	LT-90-050WT	1/2"	15	2.625	1.209	2.625	LT-RT-1P	YES
67601002	LT-90-075WT	3/4"	10	2.851	1.411	2.851	LT-RT-1P	YES
67601102	LT-90-100WT	1"	9	3.112	1.779	3.112	LT-RT-100	YES



PVC SIMPush™ CONDUIT FITTINGS

- No adhesive needed
- Works with schedule 40 and schedule 80 UL listed PVC conduit as well as HDPE cable in conduit
- Reusable, tested up to 100 removal cycles
- IP66, NEMA3S, watertight, concrete tight, rated for direct burial
- Manufactured with UV resistant PVC



PVC SIMPush™ CONDUIT FITTINGS

PVC COUPLING



Stock #	Model #	Trade Size	Quantity Per Bag	OVERALL PRODUCT DIMENSIONS			Associated Removal Tool Model #	Removal Tool Included
				H (in.)	W (in.)	L (in.)		
RETAIL POLY-BAG PACKAGING								
65083401	P-CP-050	1/2"	1	2.325	1.419	1.419	PLT-RT-1P	-
65083403	P-CP-050-Q5	1/2"	5	2.325	1.419	1.419	PLT-RT-1P	-
65083501	P-CP-075	3/4"	1	2.437	1.653	1.653	PLT-RT-1P	-
65083503	P-CP-075-Q5	3/4"	5	2.437	1.653	1.653	PLT-RT-1P	-
65083601	P-CP-100	1"	1	2.543	1.929	1.929	PLT-RT-100	-
Stock #	Model #	Trade Size	Quantity Per Box	H (in.)	W (in.)	L (in.)	Associated Removal Tool Model #	Removal Tool Included
CONTRACTOR PACK								
65083402	P-CP-050WT	1/2"	30	2.325	1.419	1.419	PLT-RT-1P	YES
65083502	P-CP-075WT	3/4"	24	2.437	1.653	1.653	PLT-RT-1P	YES
65083602	P-CP-100WT	1"	20	2.543	1.929	1.929	PLT-RT-100	YES

PVC MALE ADAPTER



Stock #	Model #	Trade Size	Quantity Per Bag	OVERALL PRODUCT DIMENSIONS			Associated Removal Tool Model #	Removal Tool Included
				H (in.)	W (in.)	L (in.)		
RETAIL POLY-BAG PACKAGING								
65083701	P-MA-050	1/2"	1	1.797	1.425	1.425	PLT-RT-1P	-
65083703	P-MA-050-Q5	1/2"	1	1.797	1.425	1.425	PLT-RT-1P	-
65083901	P-MA-075	3/4"	1	1.836	1.653	1.653	PLT-RT-1P	-
65083903	P-MA-075-Q5	3/4"	1	1.836	1.653	1.653	PLT-RT-1P	-
65084001	P-MA-100	1"	1	1.941	1.929	1.929	PLT-RT-100	-
Stock #	Model #	Trade Size	Quantity Per Box	H (in.)	W (in.)	L (in.)	Associated Removal Tool Model #	Removal Tool Included
CONTRACTOR PACK								
65083702	P-MA-050WT	1/2"	40	1.797	1.425	1.425	PLT-RT-1P	YES
65083902	P-MA-075WT	3/4"	30	1.836	1.653	1.653	PLT-RT-1P	YES
65084002	P-MA-100WT	1"	20	1.941	1.929	1.929	PLT-RT-100	YES

PVC 90° CONNECTOR



Stock #	Model #	Trade Size	Quantity Per Bag	OVERALL PRODUCT DIMENSIONS			Associated Removal Tool Model #	Removal Tool Included
				H (in.)	W (in.)	L (in.)		
RETAIL POLY-BAG PACKAGING								
67599301	P-90-050	1/2"	1	2.735	1.419	2.735	PLT-RT-1P	-
67599401	P-90-075	3/4"	1	2.985	1.653	2.985	PLT-RT-1P	-
67599501	P-90-100	1"	1	3.254	1.929	3.254	PLT-RT-100	-
Stock #	Model #	Trade Size	Quantity Per Box	H (in.)	W (in.)	L (in.)	Associated Removal Tool Model #	Removal Tool Included
CONTRACTOR PACK								
67599302	P-90-050WT	1/2"	15	2.735	1.419	2.735	PLT-RT-1P	YES
67599402	P-90-075WT	3/4"	10	2.985	1.653	2.985	PLT-RT-1P	YES
67599502	P-90-100WT	1"		3.254	1.929	3.254	PLT-RT-100	YES



SIMPush™ REMOVAL TOOL



Stock #	Model #	Description	OVERALL PRODUCT DIMENSIONS		
			H (in.)	W (in.)	L (in.)
67602502	E-RT-1P	1/2" & 3/4" EMT, Push Connect Removal Tool	1.714	2.226	1.697
67602503	E-RT-2P	1" & 1-1/4" EMT, Push Connect Removal Tool	2.467	3.312	2.498
67602504	E-RT-3P	1-1/2" & 2" EMT, Push Connect Removal Tool	3.552	4.625	3.581
67603202	EW-RT-1P	1/2" & 3/4" EMT Watertight, Push Connect Removal Tool	1.714	2.226	1.697
67603201	EW-RT-100	1" EMT Watertight, Push Connect Removal Tool	2.056	2.715	1.141
67601802	R-RT-1P	1/2" & 3/4" Rigid & IMC, Push Connect Removal Tool	1.714	2.226	1.697
67601803	R-RT-2P	1" & 1-1/4" Rigid & IMC, Push Connect Removal Tool	2.467	3.312	2.498
67601804	R-RT-3P	1-1/2" & 2" Rigid & IMC, Push Connect Removal Tool	3.552	4.625	3.581
67603203	LT-RT-1P	1/2" & 3/4" Liquid-Tight Metallic, Push Connect Removal Tool	1.714	2.226	1.697
67603204	LT-RT-100	1" Liquid-Tight Metallic, Push Connect Removal Tool	2.056	2.715	1.141
67601204	PLT-RT-1P	1/2" & 3/4" Liquid-Tight Non Metallic + PVC, Push Connect Removal Tool	1.871	2.441	1.854
67601205	PLT-RT-100	1" Liquid-Tight Non Metallic + PVC, Push Connect Removal Tool	2.1896	2.844	1.199

*All removal tools are sold individually or in pairs.

SIMPush™ FITTINGS SPEC SHEET

	EMT	EMT Wet Location	Rigid	Metallic Liquid Tight	Non-Metallic Liquid Tight	PVC
Certifications	cULus	cULus	cULus	cULus	UL	UL
Nema Rating	-----	NEMA 3S	NEMA 3S	NEMA 3S	NEMA 3S	NEMA 3S
Specified Conduit	UL certified steel (Fe) EMT conduit	UL certified steel (Fe) EMT conduit	UL certified rigid, GRC, IMC. Works with threaded Rigid and GRC	UL certified FMC and LFMC-B liquid tight conduit	UL certified FMC and LFMC-B liquid tight conduit	UL certified schedule 40 and 80 rigid PVC conduit. Also works with HDPE conduit.
IP Rating	-----	IP66- Dust tight and protects against powerful jetting water	IP66- Dust tight and protects against powerful jetting water	IP66- Dust tight and protects against powerful jetting water	IP66- Dust tight and protects against powerful jetting water	IP66- Dust tight and protects against powerful jetting water
	Dry Location Only	Raintight to prevent water from getting into conduit, box, or enclosure	Raintight to prevent water from getting into conduit, box, or enclosure	Raintight to prevent water from getting into conduit, box, or enclosure	Raintight to prevent water from getting into conduit, box, or enclosure	Raintight to prevent water from getting into conduit, box, or enclosure
		Concrete-tight	Concrete-tight	Concrete-tight	Concrete-tight	Concrete-tight
Tested Operating Temperature	-----	UL Tested Thermoplastic/Elastomeric Material Operating Range as tested for max 90°C wire	UL Tested Thermoplastic/Elastomeric Material Operating Range as tested for max 90°C wire	UL Tested Thermoplastic/Elastomeric Material Operating Range as tested for max 90°C wire	UL Listed schedule 40/80 PVC conduit suitable for use with 90°C (194°F) wiring	UL Listed schedule 40/80 PVC conduit suitable for use with 90°C (194°F) wiring
Provides Continuous Ground	Yes	Yes	Yes	Yes	-----	-----
Materials	Die Cast corrosion resistant copper free aluminum	Die cast corrosion resistant copper free aluminum	Die cast corrosion resistant copper free aluminum	Die cast corrosion resistant copper free aluminum	UV resistant PVC	UV resistant PVC
Coatings	Lubricating grease (internal)	Powder coated (external) for corrosion resistance, lubricating grease (internal)	Powder coated (external) for corrosion resistance, lubricating grease (internal)	Powder coated (external) for corrosion resistance, lubricating grease (internal)	Lubricating grease (internal)	Lubricating grease (internal)
Reusability Cycle Tested	Tested to 100 removal cycles	Tested to 100 removal cycles	Tested to 100 removal cycles	Tested to 100 removal cycles	Tested to 100 removal cycles	Tested to 100 removal cycles
Sealing	-----	Contains internal elastomeric gasket to seal out water, oil, dust and dirt.	Contains internal elastomeric gasket to seal out water, oil, dust and dirt.	Contains internal elastomeric gasket to seal out water, oil, dust and dirt.	Contains internal elastomeric gasket to seal out water, oil, dust and dirt.	Contains internal elastomeric gasket to seal out water, oil, dust and dirt.
Locking Teeth	Zinc plated steel	Zinc plated steel	Zinc plated steel	Zinc plated steel	Zinc plated steel	Zinc plated steel
Connector Details	Contains zinc plated steel lock nut	Contains zinc plated steel locknut and watertight elastomeric gasket on male threads that seals installation for raintight connection between the box and the connector	Contains zinc plated steel locknut and watertight elastomeric gasket on male threads that seals installation for raintight connection between the box and the connector	Contains zinc plated steel locknut and watertight elastomeric gasket on male threads that seals installation for raintight connection between the box and the connector	Contains zinc plated steel locknut and watertight elastomeric gasket on male threads that seals installation for raintight connection between the box and the connector	Contains zinc plated steel locknut and watertight elastomeric gasket on male threads that seals installation for raintight connection between the box and the connector
Body Doors	Domed aluminum construction with zinc plated steel screws	Domed aluminum construction with zinc plated steel screws	Domed aluminum construction with zinc plated steel screws			
Body Internal Volume in Cubic Inches	1/2" - 4.3" 3/4" - 7.8" 1" - 12.0" 1-1/4" - 38.5" 1-1/2" - 38.3" 2" - 76.0"	-----	1/2" - 4.5" 3/4" - 7.5" 1" - 12.3" 1-1/4" - 35.1" 1-1/2" - 34.7" 2" - 72.1"			

CROSS REFERENCE SHEET

SIMPUSH BASE MODEL #	GARVIN	HALEX	ARLINGTON	BRIDGE- PORT	MADISON	NEER	REGAL	T&B	TOPAZ	RACO	PECO	CROUSE HINDS	Appleton	Killark	SEPCO	Orbit	AFC
E-BC-050	CCN-50	02105B	820	250DC2	L21	TC601	601	TC211SC	651	2802	260	650DC					
		12105B	800	230DC2	L121	TC501	701	TC221SC	631	2602	300	450DC					
	CCN-50	62305B		250	MEC-750	7050S	7601	TC111A	651S	2902	260ST	650S	TW-50CS		S1010	OF7601	CC50
	SSCN-50	62705B		230	MES-750	4050S	7701	TC121A	631S	2002	300ST	450S	TW50S		S1110	OF7701	SC50
E-BC-075	CCN-75	02107B	821	251DC2	L23	TC602	602	TC212SC	652	2803	261	651DC					
		12107B	801	231DC2	L123	TC502	702	TC222SC	632	2603	301	451DC					
	CCN-75	62307B		251	MEC-751	7075S	7602	TC112A	652S	2903	261ST	651S	TW-75CS		S1011	OF7602	CC75
	SSCN-75	62707B		231	MES-751	4075S	7702	TC122A	632S	2003	301ST	451	TW75-S		S1111	OF7702	SC75
E-BC-100	CCN-100	02110B	822	252DC2	L25	TC603	603	TC213SC	653	2804	262	652DC					
		12110B	802	232DC2	L125	TC503	703	TC223SC	633	2604	302	452DC					
	CCN-100	62310B		252	MEC-752	7100S	7603	TC113A	653S	2904	262ST	652	TW-100CS		S1012	OF7603	CC100
		62710B		232	MES-752	4100S	7703	TC123A	633S	2004	302ST	452	TW100S		S1112	OF7703	SC100
E-BC-125	CCN-125	02112B	823	253DC2	L27	TC604	604	TC214SC	654	2805	263	653DC					
		12112B	803	233DC2	L127	TC504	704	TC224SC	634	2605	303	453DC					
	CCN-125	62312B		253	MEC-753	7125S	7604	TC114A	654S	2905	263ST	653	TW-125CS		S1013	OF7604	CC125
		62712B		233	MES-753	4125S	7704	TC124A	634S	2005	303ST	453	TW125S		S1112A	OF7704	SC125
E-BC-150	CCN-150	02115B	824	254DC2	L29	TC605	605	TC215SC	655	2806	264	654DC					
		12115B	804	234DC2	L129	TC505	705	TC225SC	635	2606	304	454DC					
	CCN-150	62315B		254	MEC-754	7150S	7605	TC115A	655S	2906	264ST	654	TW-150CS		S1014	OF7605	CC150
		62715B		234	MES-754	4150S	7705	TC125A	635S	2006	304ST	454	TW150S		S1112B	OF7705	SC150
E-BC-200	CCN-200	02120B	825	255DC2	L31	TC606	606	TC216SC	656	2808	265	655DC					
		12120B	805	235DC2	L131	TC506	706	TC226SC	636	2608	305	455DC					
	CCN-200	62320B		255	MEC-755	7200S	7606	TC116A	656S	2908	265ST	655	TW-200CS		S1015	OF7606	CC200
		62720B		235	MES-755	4200S	7706	TC126A	636S	2008	305ST	455	TW200S		S1112C	OF7706	SC200
E-CB-050	LC50	56405		C-41CGC	LCLA-50CB	LC-50DCGSST			C1SSCG	C0C050		C15-MTC			COC-1CG	C1CA	
E-CB-075	LC75	56407		C-42CGC	LCLA-75CB	LC-75DCGSST			C2SSCG	C0C075		C25-MTC			COC-2CG	C2CA	
E-CP-050	CCP-50	02205B	830	260DC	L22	TC611	611	TK211SC	661	2822	320	660DC					
	SSLP-50	12205B	810	240DC	L122	TC511	711	TK221	641	2622	310	460DC					
	CCP-50	62405B		260	MEC-760	6050S	7611	TK111A	661S	2922	320ST	660S	95T050		S1016	OF7611	CK50
E-CP-075	CCP-75	02207B	831	261DC	L24	TC612	612	TK212SC	662	2823	321	661DC					
	SSLP-75	12207B	811	241DC	L124	TC512	712	TK222	642	2623	311	461DC					
	CCP-75	62407B		261	MEC-761	6075S	7612	TK112A	662S	2923	321ST	661S	95T075		S1017	OF7612	CK75
E-CP-100	CCP-100	02210B	832	262DC	L26	TC613	613	TK213SC	663	2824	322	662DC					
		12210B	812	242DC	L126	TC513	713	TK223	643	2624	312	462DC					
	CCP-100	62410B		262	MEC-762	6100S	7613	TK113A	663S	2924	322ST	662	95T100		S1018	OF7613	CK100

CROSS REFERENCE SHEET

SIMPUSH BASE MODEL #	GARVIN	HALEX	ARLING- TON	BRIDGE- PORT	MADISON	NEER	REGAL	T&B	TOPAZ	RACO	PECO	CROUSE HINDS	Appleton	Killark	SEPCO	Orbit	AFC
E-CP-125	CCP-125	02212B	833	263DC	L28	TC614	614	TK214SC	664	2825	323	663DC					
		12212B	813	243DC	L128	TC514	714	TK224	644	2625	313	463DC					
	CCP-125	62412B		263	MEC-763	6125S	7614	TK114A	664S	2925	323ST	663	95T125		S1019	OF7614	CK125
E-CP-150	CCP-150	02215B	834	264DC	L30	TC615	615	TK215SC	665	2826	324	664DC					
		12215B	814	244DC	L130	TC515	715	TK225	645	2626	314	464DC					
	CCP-150	62415B		264	MEC-764	6150S	7615	TK115A	665S	2926	324ST	664	95T150		S1020	OF7615	CK150
E-CP-200	CCP-200	02220B	835	265DC	L32	TC616	616	TK216SC	666	2828	325	665DC					
		12220B	815	245DC	L132	TC516	716	TK226	646	2628	315	465DC					
	CCP-200	62420B		265	MEC-765	6200S	7616	TK116A	666S	2928	325ST	665	95T200		S1021	OF7616	CK200
E-IE-050	ECS-50	14605			L244-1	CPL50		TL291	341		680EMT						
E-IE-075	ECS-75	14607			L244-2	CPL75		TL292	342		681EMT						
E-LB-050	LB50	56605		LB-41CGC	LBLA-50CB	LB-50DCGSST			LB1SS-CG			LB15-MTC		COLB-1CG	LB1CA		
	LB50	58705		LB-31	LBE-50	LB-50-SS	8701	ALB-12	ELB1	EBLB-1CG		LB15-MTC	LB50T-A		LB1AT	SSLB-50	
E-LB-075	LB75	56607		LB-42CGC	LBLA-75CB	LB-75DCGSST			LB2SS-CG			LB25-MTC		COLB-2CG	LB2CA		
	LB75	58707		LB-32	LBE-75	LB-75-SS	8702	ALB-34	ELB2	EBLB-2CG		LB25-MTC	LB75T-A		LB2AT	SSLB-75	
E-LL-050	LL50	56305		LL-41CGC	LLLA-50CB	LL-50DCGSST			LL1SS-CG	COLL050		LL15-MTC		COLL-1CG	LL1CA		
E-LL-075	LL75	56307		LL-42CGC	LLLA-75CB	LL-75DCGSST			LL2SS-CG	COLL075		LL25-MTC		COLL-2CG	LL2CA		
E-LR-050	LR50	56905		LR-41CGC	LRLA-50CB	LR-50DCGSST			LR1SS-CG			LR15-MTC		COLR-1CG	LR1CA		
E-LR-075	LR75	56907		LR-42CGC	LRLA-75CB	LR-75DCGSST			LR2SS-CG			LR25-MTC		COLR-2CG	LR2CA		
E-OC-050	OCC-50	03905						T0211SC	781	1952							
	OCS-50	03705B	890	1620DC2	L37-1	TN50		T0221	771	1762	300-OC	2400					
E-OC-075	OCC-75	03907						T0212	782	1953							
	OCS-75	03707B	891	1621DC2	L37-2	TN75		T0222	772	1763	301-OC	2401					
E-PB-050		14305		51DC2	L143-1		9691	TL211	371	2762	650EMT	2410					
E-PB-075		14307		52DC2	L143-2		9692	TL212	372	2763	651EMT						
E-PE-050	PESS-50	14405		61DC	L144-1	THL500	9711	TL201	381	2752	670EMT	2430					
	PESS-50	94405		61DC	LG144-1	THL500G	9701					850EE DC					
	PEC-50	94505	HL5000									820DC					
	PE-50	94105B	HL500	81DC	LG141-1	HL500	9661	HL601	351	2652	670	850RR DC					
E-PE-075	PESS-75	14407		62DC	L144-2	THL750	9712	TL202SC	382	2753	671EMT	2431					
	PESS-75	94407		62DC	LG144-2	THL750G	9702					875EE DC					
	PEC-75	94507	HL7500									821DC					
	PE-75	94107B	HL750	82DC	LG141-2	HL750	9662	HL602	352	2653	671	875RR DC					
E-PE-100	PE-100	94110	HL1000	83DC	LG141-3	HL1000	9663	HL603	353	2654	672	8100RR DC					
	PESS-100	94410		63DC	LG144-3		9703	TL203	383	2754	672EMT	8100EE DC					
	PEC-100	94510	HL1000									822DC					
	PEC-100	94510	HL1000									822DC					

CROSS REFERENCE SHEET

SIMPUSH BASE MODEL #	GARVIN	HALEX	ARLINGTON	BRIDGE- PORT	MADISON	NEER	REGAL	T&B	TOPAZ	RACO	PECO	CROUSE HINDS	Appleton	Killark	SEPCO	Orbit	AFC
E-TB-050	LT50	56805		T-41CGC	LTLA-50CB	TC-50DCGSST			T1SSCG	COT050		T15-MTC		COT-1CG	T1CA		
E-TB-075	LT75	56807		T-42CGC	LTLA-75CB	TC-75DCGSST			T2SSCG	COT075		T25-MTC		COT-2CG	T2CA		
EW-BC-050	CCNR-50	62505B	820RT	250SRT	MECR-750	7050SR		TC111A-RT		2902RT		650RT					
EW-BC-075	CCNR-75	62507B	821RT	251SRT	MECR-751	7075SR		TC112A-RT		2903RT		651RT					
EW-BC-100	CCNR-100	62510B	822RT	252SRT	MECR-752	7100SR		TC113A-RT		2904RT		652RT					
EW-CP-050	CCPR-50	62605B	830RT	260SRT	MECR-760	6050SR		TK111A-RT		2922RT		660RT					
EW-CP-075	CCPR-75	62607B	831RT	261SRT	MECR-761	6075SR		TK112A-RT		2923RT		661RT					
EW-CP-100	CCPR-100	62610B	832RT	262SRT	MECR-762	6100SR		TK113A-RT		2924RT		662RT					
LIQUID TIGHT																	
LT-90-050	LTC-5090	16905B	LT9050	470LT2	LQA9050	LML11	5841	LT291	491		RT-90-50	LT5090DC					
LT-90-075	LTC-7590	16907B	LT9075	471LT2	LQA9075	LML21	5842	LT292	492		RT-90-75	LT7590DC					
LT-90-100	LTC-10090	16910B	LT90100	472LT2	LQA9100	LML31	5843	LT293	493		RT-90-100	LT10090DC					
LT-BC-050	WH50	91631	WH1	151-DC	LWH-50	CHM50DT	401	H050SC	201	1702	WH-1	ST-1	HUB-50D	WH-1	TWH10	WH-50	
	LTC-50	16205B	LT50	430LT2	LQA1050	LMM11	5801	LT201	471	3402	RT-50	LT50DC					
	LTC-50	66205B		430-SLT	MSTR-50	4QS50	5801	LT-101		3402	RT-50S	LT-50	ST-50	K050	SLT27	MLT-50	LS50
LT-BC-075	WH75	91632	WH2	152-DC	LWH-75	CHM75DT	402	H075SC	202	1703	WH-2	ST-2	HUB-75D	WH-2	TWH20	WH-75	
	LTC-75	16207B	LT75	431LT2	LQA1075	LMM21	5802	LT202	472		RT-75	LT75DC					
	LTC-75	66206B		431-SLT	MSTR-75	4QS75	5802	LT-102		3403	RT-75S	LT-75	ST-75	K075	SLT28	MLT-75	LS75
LT-BC-100	WH100	16310	WH3	153DC	LWH-100	CHM100DT	403	H100SC	203	1704	WH-3	ST-3					
	LTC-100	16210B	LT100	432LT2	LQA1100	LMM31	5803	LT203	473		RT-100	LT100DC					
	LTC-100	66210B		432-SLT	MSTR-100	4QS100	5803	LT-103		3404	RT-100S	LT-100	ST-100	K100	SLT29	MLT-100	LS100
LTNM-90-050	NMLT-3890	76903B		469-NMLT	NMLQ-9038	NML-01	3840	LT590	P490	4731	NMLT-90-38	LT3890NM	NML-01				
LTNM-90-075	NMLT-5090	76905B		470-NMLT	NMLQ-9050	NML-11	3841	LT591	P491	4732	NMLT-90-50	LT5090NM	NML-11				
LTNM-90-100	NMLT-7590	76907B		471-NMLT	NMLQ-9075	NML-21		LT592	P492		NMLT-90-75						
LTNM-BC-050	NMLT-50	76205B	NMLT50	430-NMLT	NMLQ-1050	NMM-11	3801	LT501	P471	4722	NMLT-50	LT50NM	NMM-11				NMLT-50
LTNM-BC-075	NMLT-75	76207B	NMLT75	431-NMLT	NMLQ-1075	NMM-21	3802	LT502	P472	4723	NMLT-75	LT75NM	NMM-21				NMLT-75
LTNM-BC-100	NMLT-100	76210B	NMLT100	432-NMLT	NMLQ-1100	NMM-31	3803	LT503	P473	4724	NMLT-100	LT100NM	NMM-31				NMLT-100
RIGID																	
R-BC-050	RT50	63505B		3000	MNT-2750	31-050	601	HC401	261	1802	960	CPR1					
	WH50	91631	WH1	151-DC	LWH-50	CHM50DT	401	H050SC	201	1702	WH-1	ST-1					
	RS-50																

CROSS REFERENCE SHEET

SIMPUSH BASE MODEL #	GARVIN	HALEX	ARLINGTON	BRIDGE- PORT	MADISON	NEER	REGAL	T&B	TOPAZ	RACO	PECO	CROUSE HINDS	Appleton	Killark	SEPCO	Orbit	AFC
R-BC-075	RT75	63507B		3001	MNT-2751	31-075	602	HC402	262	1803	961	CPR2					
	WH75	91632	WH2	152-DC	LWH-75	CHM75DT	402	H075SC	202	1703	WH-2	ST-2					
	RS-75																
R-BC-100	RT100	63510B		3002	MNT-2752	31-100		HC-403	263	1804	962	CPR3					
	WH100	16310	WH3	153DC	LWH-100	CHM100DT	403	H100SC	203	1704	WH-3	ST-3					
	RS-100																
R-BC-125	RT125	63512B		3003	MNT-2753	31-125		HC-404	264	1805	963	CPR4					
	WH125	16312	WH4	154DC	LWH-125	CHM125DT	404	H125SC	204	1705	WH-4	ST-4					
	RS-125																
R-BC-150	RT150	63515B		3004	MNT-2754	31-150		DC-405	265	1806	964	CPR5					
	WH150	16315	WH5	155DC	LWH-150	CHM150DT	405	H150SC	205	1706	WH-5	ST-5					
	RS-150																
R-BC-200	RT200	63520B		3005	MNT-2755	31-200		HC-406	266	1808	965	CPR6					
	WH200	16320	WH6	156DC	LWH-200	CHM200DT	406	H200SC	206	1708	WH-6	ST-6					
	RS-200																
R-CB-050	LC50	56405		C-41CGC	LCLA-50CB	LC-50DCGSST			C1SSCG	COC050		C15-MTC				COC-1CG	
	LC50	58405	970CCG	C-41CG	LCLA-50	LC-50DCG	8831A	DAC-1-CG	C1CG	EAC-1CG	CC-50A	C15-CGN	C-50AC-GA	OC-1CG	C1CA	C-50A	
R-CB-075	LC75	56407		C-42CGC	LCLA-75CB	LC-75DCGSST			C2SSCG	COC075		C25-MTC				COC-2CG	C2CA
	LC75	58407	971CCG	C-42CG	LCLA-75	LC-75DCG	8832A	DAC-2-CG	C2CG	EAC-2CG	CC-75A	C25-CGN	C-75AC-GA	OC2CG		C-75A	
R-CB-100	LC100	58410	972CCG	C-43CG	LCLA-100	LC-100DCG	8833A	DAC-3-CG	C3CG	EAC-3CG	CC-100A	C35-CGN	C-100AC-GA	OC-3G		C-100A	
R-CB-125	LC125	58412	973CCG	C-44CG	LCLA-125	LC-125DCG	8834A	DAC-4-CG	C4CG	RLC125	CC-125A	C45-CGN	C-125AC-GA	OC-4G		C-125A	
R-CP-050	HC50	64005B			RC-50				51		1P05						
	RTC50	63605B		3100	MNT-2760	30-050		HK-401	251	1822	980	CPR21					
R-CP-075	HC75	64007B			RC-75				52		1P07						
	RTC75	63607B		3101	MNT-2761	30-075		HK-402	252	1823	981	CPR2					
R-CP-100	HC100	64010			RC-100				53		1P10						
	RTC100	63610B		3102	MNT-2762	30-100		HK-403	253	1824	982	CPR23					
R-CP-125	HC125	64012			RC-125				54		1P12						
	RTC125	63612B		3103	MNT-2763	30-125		HK-404	254	1825	983	CPR24					
R-CP-150	HC150	64015			RC-150				55		1P15						
	RTC150	63615B		3104	MNT-2764	30-150		HK-405	255	1826	984	CPR25					
R-CP-200	HC200	64020			RC-200				56		12P0						
	RTC200	63620B		3105	MNT-2765	30-200		HK-406	256	1828	985	CPR26					
R-E-075	RTE75	15306B		291-S	MERSS-75	ESR-75			392S	1433		421				S17ES	
R-LB-050	LB50	56605		LB-41CGC	LBLA-50CB	LB-50DCGSST			LB1SS-CG			LB15-MTC				COLB-1CG	LB1CA
	LB50	58605	930LBCG	LB-41CG	LBLA-50	LB-50DCG	8801A	DALB-1-CG	LB1CG	EALB-1CG	LBC-50A	LB15-CGN	LB-50AC-GA	OLB-1CG			LB-50A

CROSS REFERENCE SHEET

SIMPUSH BASE MODEL #	GARVIN	HALEX	ARLINGTON	BRIDGE- PORT	MADISON	NEER	REGAL	T&B	TOPAZ	RACO	PECO	CROUSE HINDS	Appleton	Killark	SEPCO	Orbit	AFC
R-LB-075	LB75	56607		LB-42CGC	LBLA-75CB	LB-75DCGSST			LB2SS- CG			LB25-MTC		COLB- 2CG	LB2CA		
	LB75	58607	931LBCG	LB-42CG	LBLA-75	LB-75DCG	8802A	DALB- 2-CG	LB2CG	EALB- 2CG	LBC-75A	LB25-CGN	LB-75AC- GA	OLB- 2CG		LB-75A	
R-LB-100	LB100	58610	932LBCG	LB-43CG	LBLA-100	LB-100DCG	8803A	DALB- 3-CG	LB3CG	EALB- 3CG	LBC- 100A	LB35-CGN		OLB- 3CG		LB- 100A	
R-LB-125	LB125	58612	933LBCG	LB-44CG	LBLA-125	LB-125DCG	8804A	DALB- 4-CG	LB4CG	EALB- 4CG	LBC- 125A	LB45-CGN		OLB- 4CG		LB- 125A	
R-LB-150	LB150	58615	934LBCG	LB-45CG	LBLA-150	LB-150DCG	8805A	DALB- 5-CG	LB5CG	EALB- 5CG	LBC- 150A	LB55-CGN		OLB- 5CG		LB- 150A	
R-LB-200	LB200	58620	935LBCG	LB-46CG	LBLA-200	LB-200DCG	8806A	DALB- 6-CG	LB6CG	EALB- 6CG	LBC- 200A	LB65-CGN		OLB-CG		LB- 200A	
R-LL-050	LL50	56305		LL-41CGC	LLLA-50CB	LL- 50DCGSST			LL1SS- CG	COLL050		LL15-MTC		COLL- 1CG	LL1CA		
R-LL-050	LL50	58305	950LLCG	LL-41CG	LLLA-50	LL-50DCG	8821A	DALL- 1-CG	LL1CG	EALL- 1CG	LLC-50A	LL15-CGN	LL-50AC- GA	OLL- 1CG		LL-50A	
R-LL-075	LL75	56307		LL-42CGC	LLLA-75CB	LL- 75DCGSST			LL2SS- CG	COLL075		LL25-MTC		COLL- 2CG	LL2CA		
R-LL-075	LL75	58307	951LLCG	LL-42CG	LLLA-75	LL-75DCG	8822A	DALL- 2-CG	LL2CG	EALL- 2CG	LLC-75A	LL25-CGN	LL-75AC- GA	OLL- 2CG		LL-75A	
R-LL-100	LL100	58310	952LLCG	LL-43CG	LLLA-100	LL-100DCG	8823A	DALL- 3-CG	LL3CG	EALL- 3CG	LLC- 100A	LL35-CGN		OLL- 3CG		LL-100A	
R-LL-125	LL125	58312	953LLCG	LL-44CG	LLLA-125	LL-125DCG	8824A	DALL- 4-CG	LL4CG	RLL150	LLC- 125A	LL45-CGN		OLL- 4CG		LL-125A	
R-LL-150	LL150	58315	954LCG	LL-45CG	LLLA-150	LL-150DCG	8825A	DALL- 5-CG	LL5CG	RLL200	LLC- 150A	LL55-CGN		OLL- 5CG		LL-150A	
R-LR-050	LR50	56905		LR-41CGC	LRLA-50CB	LR- 50DCGSST			LR1SS- CG			LR15- MTC		COLR- 1CG	LR1CA		
R-LR-050	LR50	58905	960LRCG	LR-41CG	LRLA-50	LR-50DCG	8811A	DALR- 1-CG	LR1CG	EALR- 1CG	LRC-50A	LR15-CGN		OLR- 1CG		LR-50A	
R-LR-075	LR75	56907		LR-42CGC	LRLA-75CB	LR- 75DCGSST			LR2SS- CG			LR25- MTC		COLR- 2CG	LR2CA		
R-LR-075	LR75	58907	961LRCG	LR-42CG	LRLA-75	LR-75DCG	8812A	DALR- 2-CG	LR2CG	EALR- 2CG	LRC-75A	LR25-CGN		OLR- 2CG		LR-75A	
R-LR-100	LR100	58910	962LRCG	LR-43CG	LRLA-100	LR-100DCG	8813A	DALR- 3-CG	LR3CG	EALR- 3CG	LRC- 100A	LR35-CGN		OLR- 3CG		LR- 100A	
R-LR-125	LR125	58912	963LRCG	LR-44CG	LRLA-125	LR-125DCG	8814A	DALR- 4-CG	LR4CG	RLR125	LRC- 125A	LR45-CGN		OLR- 4CG		LR- 125A	
R-LR-150	LR150	58915	964LRCG	LR-45CG	LRLA-150	LR-150DCG	8815A	DALR- 5-CG	LR5CG	RLR150	LRC- 150A	LR55-CGN		OLR- 5CG		LR- 150A	
R-PE-050	PEC-50	94505	HL5000									820DC					
	PE-50	94105B	HL500	81DC	LG141-1	HL500	9661	HL601	351	2652	670	850RR DC					
R-PE-075	PEC-75	94507	HL7500									821DC					
	PE-75	94107B	HL750	82DC	LG141-2	HL750	9662	HL602	352	2653	671	875RR DC					
R-PE-100	PEC-100	94510	HL1000									822DC					
	PE-100	94110	HL1000	83DC	LG141-3	HL1000	9663	HL603	353	2654	672	8100RR DC					
R-PB-050	PEB-50	94205B	910	71DC2	LG142-1		9651	HL611	361	2662	650	850RB DC					
	PECB-50	94705	9100									810DC					
R-PB-075	PEB-75	94207B	911	72DC2	LG142-2		9652	HL612	362	2663	651	875RB DC					
	PECB-75	94707	9110									811DC					
R-RD-075- 050	RB-7550	13205B	522	1161	LRB2	RB2	8401	RB121	RB2	1142	RB75-50	251					

CROSS REFERENCE SHEET

SIMPUSH BASE MODEL #	GARVIN	HALEX	ARLING- TON	BRIDGE- PORT	MADISON	NEER	REGAL	T&B	TOPAZ	RACO	PECO	CROUSE HINDS	Appleton	Killark	SEPCO	Orbit	AFC
R-RD-100-050	RB-10050	13305B	523	1162	LRB3	RB3	8402	RB131	RB3	1143	RB100-50	252					
R-RD-100-075	RB-10075	13307B	524	1163	LRB4	RB4	8403	RB132	RB4	1144	RB100-75	260					
R-TB-050	LT50	56805		T-41CGC	LTLA-50CB	TC-50DCGSST			T1SSCG	COT050		T15-MTC		COT-1CG			
	LT50	58805		T-41CG	LTLA-50	TC-50DCG	8841A	DAT-1-CG	T1CG	EAT-1CG	TC-50A	T15-CGN	T-50ACGA	OT-1CG	T1CA	T-50A	
R-TB-075	LT75	56807		T-42CGC	LTLA-75CB	TC-75DCGSST			T2SSCG	COT075		T25-MTC		COT-2CG			
	LT75	58807		T-42CG	LTLA-75	TC-75DCG	8842A	DAT-2-CG	T2CG	EAT-2CG	TC-75A	T25-CGN	T-75ACGA	OT-2CG	T2CA	T-75A	
R-TB-100	LT100	58810	942TCG	T-43CG	LTLA-100	TC-100DCG	8843A	DAT-3-CG	T3CG	EAT-3CG	TC-100A	T35-CGN	T-100ACGA	OT-3CG		T-100A	
R-TB-125	LT125	58812	943TCG	T-44CG	LTLA-125	TC-125DCG	8844A	DAT-4-CG	T4CG	EAT-4CG	TC-125A	T45-CGN	T-125ACGA	OT-4CG		T-125A	
R-TB-150	LT150	58815	944TCG	T-45CG	LTLA-150	TC-150DCG	8845A	DAT-5-CG	T5CG	EAT-5CG	TC-150A	T55-CGN	T-150ACGA	OT-5CG		T-150A	
R-TB-200	LT200	58820	945TCG	T-46CG	LTLA-200	TC-200DCG	8846A	DAT-6-CG	T6CG	EAT-6CG	TC-200A	T65-CGN	T-200ACGA	OT-6CG		T-200A	

SNAP-IN CONDUIT SUPPORT



Model #	Description
CS812	Screw On Conduit Support For 1-1/2" Deep Box And 1/2" Or 3/4" Conduit
CS812D	Screw On Conduit Support For 2-1/8" Deep Box And 1/2" Or 3/4" Conduit
CS912D	Screw On Conduit Support For Use With 2-1/8" Deep Box And 1" Conduit

WOOD STUD NAIL-ON CONDUIT STRAP



Model #	Description
NS-50	1/2" Nail Strap
NS-75	3/4" Nail Strap
NS-100	1" Nail Strap

METAL STUD CONDUIT HANGER



Model #	Description
MSCH-1234	1/2" & 3/4" Metal Stud Conduit Hanger
MSCH-1	1" Metal Stud Conduit Hanger

EMT SINGLE HOLE STRAPS



Model #	Description
OHS-38	One Hole EMT Conduit Strap, Steel, 3/8"
OHS-50	One Hole EMT Conduit Strap, Steel, 1/2"
OHS-75	One Hole EMT Conduit Strap, Steel, 3/4"
OHS-100	One Hole EMT Conduit Strap, Steel, 1"
OHS-125	One Hole EMT Conduit Strap, Steel, 1-1/4"
OHS-150	One Hole EMT Conduit Strap, Steel, 1-1/2"
OHS-200	One Hole EMT Conduit Strap, Steel, 2"
OHS-250	One Hole EMT Conduit Strap, Steel, 2-1/2"
OHS-300	One Hole EMT Conduit Strap, Steel, 3"
OHS-350	One Hole EMT Conduit Strap, Steel, 3-1/2"
OHS-400	One Hole EMT Conduit Strap, Steel, 4"

EMT TWO HOLE STRAPS



Model #	Description
THS-25	EMT Two Hole Conduit Strap, 1/4"
THS-38	EMT Two Hole Conduit Strap, 3/8"
THS-50	EMT Two Hole Conduit Strap, 1/2"
THS-75	EMT Two Hole Conduit Strap, 3/4"
THS-100	EMT Two Hole Conduit Strap, 1"
THS-125	EMT Two Hole Conduit Strap, 1-1/4"
THS-150	EMT Two Hole Conduit Strap, 1-1/2"
THS-200	EMT Two Hole Conduit Strap, 2"
THS-250	EMT Two Hole Conduit Strap, 2-1/2"
THS-300	EMT Two Hole Conduit Strap, 3"
THS-350	EMT Two Hole Conduit Strap, 3-1/2"
THS-400	EMT Two Hole Conduit Strap, 4"

RIGID SINGLE HOLE STRAPS



Model #	Description
OHSR-50S	One Hole Rigid Conduit Strap, Steel, 1/2"
OHSR-75S	One Hole Rigid Conduit Strap, Steel, 3/4"
OHSR-100S	One Hole Rigid Conduit Strap, Steel, 1"
OHSR-125S	One Hole Rigid Conduit Strap, Steel, 1-1/4"
OHSR-150S	One Hole Rigid Conduit Strap, Steel, 1-1/2"
OHSR-200S	One Hole Rigid Conduit Strap, Steel, 2"
OHSR-250S	One Hole Rigid Conduit Strap, Steel, 2-1/2"
OHSR-300S	One Hole Rigid Conduit Strap, Steel, 3"
OHSR-350S	One Hole Rigid Conduit Strap, Steel, 3-1/2"
OHSR-400S	One Hole Rigid Conduit Strap, Steel, 4"

RIGID TWO HOLE STRAPS



Model #	Description
THSR-50	Rigid Two Hole Conduit Strap, 1/2"
THSR-75	Rigid Two Hole Conduit Strap, 3/4"
THSR-100	Rigid Two Hole Conduit Strap, 1"
THSR-125	Rigid Two Hole Conduit Strap, 1-1/4"
THSR-150	Rigid Two Hole Conduit Strap, 1-1/2"
THSR-200	Rigid Two Hole Conduit Strap, 2"
THSR-250	Rigid Two Hole Conduit Strap, 2-1/2"
THSR-300	Rigid Two Hole Conduit Strap, 3"
THSR-350	Rigid Two Hole Conduit Strap, 3-1/2"
THSR-400	Rigid Two Hole Conduit Strap, 4"
THSR-500	Rigid Two Hole Conduit Strap, 5"
THSR-600	Rigid Two Hole Conduit Strap, 6"

CONDUIT HANGERS



Model #	Description
CH-50	Conduit Hanger With Bolt And Nut, 1/2" EMT Or 3/8" Or 1/2" Rigid
CH-75	Conduit Hanger With Bolt And Nut, 3/4" EMT Or 1/2" Rigid
CH-100	Conduit Hanger With Bolt And Nut, 1" EMT Or 3/4" Rigid
CH-125	Conduit Hanger With Bolt And Nut, 1-1/4" EMT Or 1" Rigid
CH-150	Conduit Hanger With Bolt And Nut, 1-1/2" EMT Or 1-1/4" Rigid
CH-175	Conduit Hanger With Bolt And Nut, 1-1/2" Rigid
CH-200	Conduit Hanger With Bolt And Nut, 2" EMT
CHR-200	Conduit Hanger With Bolt And Nut, 2-1/2" EMT Or Rigid
CH-300	Conduit Hanger With Bolt And Nut, 3" EMT Or Rigid
CH-350	Conduit Hanger With Bolt And Nut, 3-1/2" EMT Or Rigid
CH-400	Conduit Hanger With Bolt And Nut, 4" EMT Or Rigid
CH-500	Conduit Hanger With Bolt And Nut For 5" EMT Conduit Or 5" Rigid Conduit

QUICK-MOUNT CONDUIT HANGER



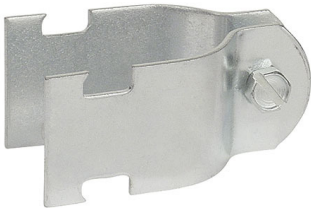
Model #	Description
CHQ-50	Quick-Mount Conduit Hanger For 1/2" EMT
CHQ-75	Quick Mount Conduit Hanger For 3/4" EMT
CHP-50	Push In Conduit Clip, For 1/2" EMT
CHP-75	Push In Conduit Clip, For 3/4" EMT
CHP-100	Push In Conduit Clip, For 1" EMT

QUICK-MOUNT HANGERS WITH ANGLE BRACKET



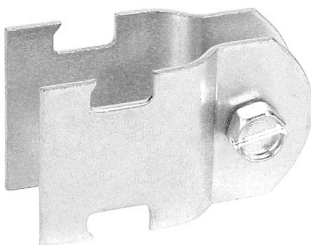
Model #	Description
CHPA-50	Push In Conduit Hanger With Angle Bracket, For 1/2" EMT
CHPA-75	Push In Conduit Hanger With Angle Bracket, For 3/4" EMT
CHPA-100	Push In Conduit Hanger With Angle Bracket, For 1" EMT
BAKC38	3/8" Metal Stud Conduit Hanger
BAKC1234	1/2" Or 3/4" Metal Stud Conduit Hanger

UNIVERSAL CONDUIT STRUT STRAPS



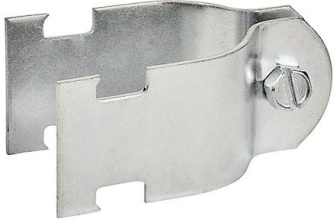
Model #	Description
STU50	1/2" Universal Two Piece EMT Or Rigid Conduit Strut Clamp
STU75	1" Universal Two Piece EMT Or Rigid Conduit Strut Clamp
STU125	1-1/4" Universal Two Piece EMT Or Rigid Conduit Strut Clamp
STU150	1-1/2" Universal Two Piece EMT Or Rigid Conduit Strut Clamp
STU200	2" Universal Two Piece EMT Or Rigid Conduit Strut Clamp

EMT CONDUIT STRUT STRAPS



Model Number	Description
STE50	1/2" Two Piece EMT Conduit Strut Clamp
STE75	3/4" Two Piece EMT Conduit Strut Clamp
STE100	1" Two Piece EMT Conduit Strut Clamp
STE125	1-1/4" Two Piece EMT Conduit Strut Clamp
STE150	1-1/2" Two Piece EMT Conduit Strut Clamp
STE200	2" Two Piece EMT Conduit Strut Clamp

RIGID CONDUIT STRUT STRAPS



Model #	Description
STR50	1/2" Two Piece Rigid Conduit Strut Clamp
STR75	3/4" Two Piece Rigid Conduit Strut Clamp
STR100	1" Two Piece Rigid Conduit Strut Clamp
STR125	1-1/4" Two Piece Rigid Conduit Strut Clamp
STR150	1-1/2" Two Piece Rigid Conduit Strut Clamp
STR200	2" Two Piece Rigid Conduit Strut Clamp
STR250	2-1/2" Two Piece Rigid Conduit Strut Clamp
STR300	3" Two Piece Rigid Conduit Strut Clamp
STR350	3-1/2" Two Piece Rigid Conduit Strut Clamp
STR400	4" Two Piece Rigid Conduit Strut Clamp
STR500	Two Piece Rigid Strut Clamp, 5"
STR600	Two Piece Rigid Strut Clamp, 6"

ONE-PIECE CONDUIT STRUT STRAPS



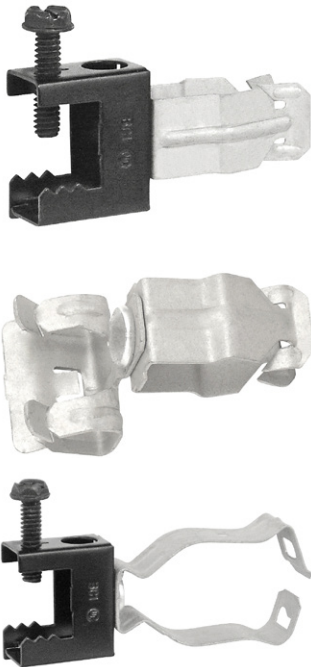
Model #	Description
OPS-50	One Piece Strut Clamp, 1/2"
OPS-75	One Piece Strut Clamp, 3/4"
OPS-100	One Piece Strut Clamp, 1"
OPS-125	One Piece Strut Clamp, 1-1/4"
OPCC-50	1/2" EMT & Rigid One Piece Strut Clamp
OPCC-75	3/4" EMT & Rigid One Piece Strut Clamp
OPCC-100	1" EMT & Rigid One Piece Strut Clamp
OPSC-38	3/8" One Piece Universal Strut Clamp For Cable/Conduit
OPSC-50	1/2" One Piece Universal Strut Clamp For Cable/Conduit
OPSC-75	3/4" One Piece Universal Strut Clamp For Cable/Conduit
OPSC-100	1" One Piece Universal Strut Clamp For Cable/Conduit
OPSC-125	1-1/4" One Piece Universal Strut Clamp For Cable/Conduit
OPSC-150	1-1/2" One Piece Universal Strut Clamp For Cable/Conduit
OPSC-200	2" One Piece Universal Strut Clamp For Cable/Conduit
OPSC-200R	2" One Piece Universal Strut Clamp
OPSC-250	2-1/2" One Piece Universal Strut Clamp For Cable/Conduit
OPSC-300	3" One Piece Universal Strut Clamp For Cable/Conduit
OPSC-350	3-1/2" One Piece Universal Strut Clamp For Cable/Conduit
OPSC-400	4" One Piece Universal Strut Clamp For Cable/Conduit

BEAM TOP-MOUNT CONDUIT HANGERS



Model #	Description
CHBC-50	Conduit Hanger With 1/4-20 Beam Clamp, For 1/2" EMT Or Rigid
CHBC-75	Conduit Hanger With 1/4-20 Beam Clamp, For 3/4" EMT Or Rigid
CHBC-100	Conduit Hanger With 1/4-20 Beam Clamp, For 1" EMT Or Rigid
CHBC-125	Conduit Hanger With 1/4-20 Beam Clamp, For 1-1/4" EMT
CHBC-150	Conduit Hanger With 1/4-20 Beam Clamp, For 1-1/2" EMT
CHBC-175	Conduit Hanger With 1/4-20 Beam Clamp, For 1-1/2" Rigid
CHBC-200	Conduit Hanger With 1/4-20 Beam Clamp, For 2" EMT Or Rigid
CHP-50-TM	Push In Conduit Hanger With Beam Clamp, Top Mount, For 1/2" EMT
CHP-75-TM	Push In Conduit Hanger With Beam Clamp, Top Mount, For 3/4" EMT
CHP-100-TM	Push In Conduit Hanger With Beam Clamp, Top Mount, For 1" EMT
CHO-5025-TM	Push In Conduit Hanger With Hammer On Beam Clamp, Top Mount, For 1/2" EMT And 1/8-1/4" Flange
CHO-5050-TM	Push In Conduit Hanger With Hammer On Beam Clamp, Top Mount, For 1/2" EMT And 5/16-1/2" Flange
CHO-5075-TM	Push In Conduit Hanger With Hammer On Beam Clamp, Top Mount, For 1/2" EMT And 9/16-3/4" Flange
CHO-7525-TM	Push In Conduit Hanger With Hammer On Beam Clamp, Top Mount, For 3/4" EMT And 1/8-1/4" Flange
CHO-7550-TM	Push In Conduit Hanger With Hammer On Beam Clamp, Top Mount, For 3/4" EMT And 5/16-1/2" Flange
CHO-7575-TM	Push In Conduit Hanger With Hammer On Beam Clamp, Top Mount, For 3/4" EMT And 9/16-3/4" Flange
CHO-10025-TM	Push In Conduit Hanger With Hammer On Beam Clamp, Top Mount, For 1" EMT And 1/8-1/4" Flange
CHO-10050-TM	Push In Conduit Hanger With Hammer On Beam Clamp, Top Mount, For 1" EMT And 5/16-1/2" Flange
CHO-10075-TM	Push In Conduit Hanger With Hammer On Beam Clamp, Top Mount, For 1" EMT And 9/16-3/4" Flange
BCTM-5075	Snap Lock Conduit Hanger With Beam Clamp, Top Mount, For 1/2" Or 3/4" Conduit
BCTM-100	Snap Lock Conduit Hanger With Beam Clamp, Top Mount, For 1" Conduit
BCTM-125	Snap Lock Conduit Hanger With Beam Clamp, Top Mount, For 1-1/4" Conduit
BC1-KC112T	Snap Lock Conduit Hanger With Beam Clamp, Top Mount, For 1-1/2" Conduit
BC1-KC2T	Snap Lock Conduit Hanger With Beam Clamp, Top Mount, For 2" Conduit
BC18KC38	3/8" Conduit Hanger With 1/8" To 1/4" Thick Flange Mount
BC18KC1234	1/2" Or 3/4" Conduit Hanger With 1/8" To 1/4" Thick Flange Mount
BC18KC1	1" Conduit Hanger With 1/8" To 1/4" Thick Flange Mount
BC18KC114	1-1/4" Conduit Hanger With 1/8" To 1/4" Thick Flange Mount
BC18KC112	1-1/2" Conduit Hanger With 1/8" To 1/4" Thick Flange Mount
BC18KC2	2" Conduit Hanger With 1/8" To 1/4" Thick Flange Mount
BC516KC38	3/8" Conduit Hanger With 5/16" To 1/2" Thick Flange Mount
BC516KC1234	1/2" Or 3/4 In. Conduit Hanger With 5/16" To 1/2" Thick Flange Mount
BC516KC1	1" Conduit Hanger With 5/16" To 1/2" Thick Flange Mount
BC516KC114	1-1/4" Conduit Hanger With 5/16" To 1/2" Thick Flange Mount
BC516KC112	1-1/2" Conduit Hanger With 5/16" To 1/2" Thick Flange Mount
BC516KC2	2" Conduit Hanger With 5/16" To 1/2" Thick Flange Mount

BEAM SIDE-MOUNT CONDUIT HANGERS



Model #	Description
CHP-50-SM	Push In Conduit Hanger With Beam Clamp, Side Mount, For 1/2" EMT
CHP-75-SM	Push In Conduit Hanger With Beam Clamp, Side Mount, For 3/4" EMT
CHP-100-SM	Push In Conduit Hanger With Beam Clamp, Side Mount, For 1" EMT
CHO-5025-SM	Push In Conduit Hanger With Hammer On Beam Clamp, Side Mount, For 1/2" EMT And 1/8"-1/4" Flange
CHO-5050-SM	Push In Conduit Hanger With Hammer On Beam Clamp, Side Mount, For 1/2" EMT And 5/16"-1/2" Flange
CHO-5075-SM	Push In Conduit Hanger With Hammer On Beam Clamp, Side Mount, For 1/2" EMT And 9/16"-3/4" Flange
CHO-7525-SM	Push In Conduit Hanger With Hammer On Beam Clamp, Side Mount, For 3/4" EMT And 1/8"-1/4" Flange
CHO-7550-SM	Push In Conduit Hanger With Hammer On Beam Clamp, Side Mount, For 3/4" EMT And 5/16"-1/2" Flange
CHO-7575-SM	Push In Conduit Hanger With Hammer On Beam Clamp, Side Mount, For 3/4" EMT And 9/16"-3/4" Flange
CHO-10025-SM	Push In Conduit Hanger With Hammer On Beam Clamp, Side Mount, For 1" EMT And 1/8"-1/4" Flange
CHO-10050-SM	Push In Conduit Hanger With Hammer On Beam Clamp, Side Mount, For 1" EMT And 5/16"-1/2" Flange
CHO-10075-SM	Push In Conduit Hanger With Hammer On Beam Clamp, Side Mount, For 1" EMT And 9/16"-3/4" Flange
BCSM-5075	Snap Lock Conduit Hanger With Beam Clamp, Side Mount, For 1/2" Or 3/4" Conduit
BCSM-100	Snap Lock Conduit Hanger With Beam Clamp, Side Mount, For 1" Conduit
BCSM-125	Snap Lock Conduit Hanger With Beam Clamp, Side Mount, For 1-1/4" Conduit
BC1-KC112TSM	Snap Lock Conduit Hanger With Beam Clamp, Side Mount, For 1-1/2" Conduit
BC1-KC2TSM	Snap Lock Conduit Hanger With Beam Clamp, Side Mount, For 2" Conduit
BC18KC1234SM	1/2" Or 3/4" Conduit Hanger With 1/8" To 1/4" Thick Flange Mount (Side Mount)
BC18KC1SM	1" Conduit Hanger With 1/8" To 1/4" Thick Flange Mount (Side Mount)

J-STYLE UNDER BEAM CLAMP CONDUIT HANGER



Model Number	Description
JCL50	1/2" J Style For Beam Conduit Clamp
JCL75	3/4" J Style For Beam Conduit Clamp
JCL100	1" J Style For Beam Conduit Clamp
JCL125	1"-1-1/4" J Style For Beam Conduit Clamp
JCL150	1-1/2" J Style For Beam Conduit Clamp
JCL250	2-1/2" J Style For Beam Conduit Clamp
JCL350	3-1/2" J Style For Beam Conduit Clamp

RIGHT ANGLE BEAM CLAMP CONDUIT HANGER



Model #	Description
RA50	1/2" Right Angle Conduit Clamp
RA75	3/4" Right Angle Conduit Clamp
RA100	1" Right Angle Conduit Clamp
RA125	1-1/4" Right Angle Conduit Clamp
RA150	1-1/2" Right Angle Conduit Clamp
RA200	2" Right Angle Conduit Clamp
RA250	2-1/2" Right Angle Conduit Clamp
RA300	3" Right Angle Conduit Clamp
RA350	3-1/2" Right Angle Conduit Clamp
RA400	4" Right Angle Conduit Clamp

PARALLEL BEAM EDGE CLAMP CONDUIT HANGER



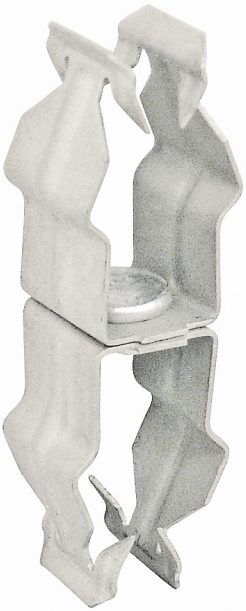
Model #	Description
PAR50	1/2" Parallel Beam Conduit Clamp
PAR75	3/4" Parallel Beam Conduit Clamp
PAR100	1" Parallel Beam Conduit Clamp
PAR125	1-1/4" Parallel Beam Conduit Clamp
PAR150	1-1/2" Parallel Beam Conduit Clamp
PAR200	2" Parallel Beam Conduit Clamp
PAR250	2-1/2" Parallel Beam Conduit Clamp
PAR300	3" Parallel Beam Conduit Clamp
PAR350	3-1/2" Parallel Beam Conduit Clamp
PAR400	4" Parallel Beam Conduit Clamp

CROSS BEAM EDGE CLAMP CONDUIT HANGER



Model #	Description
EDG50	1/2" Beam Edge Conduit Clamp
EDG75	3/4" Beam Edge Conduit Clamp
EDG100	1" Beam Edge Conduit Clamp
EDG125	1-1/4" Beam Edge Conduit Clamp
EDG150	1-1/2" Beam Edge Conduit Clamp
EDG200	2" Beam Edge Conduit Clamp
EDG250	2-1/2" Beam Edge Conduit Clamp
EDG300	3" Beam Edge Conduit Clamp

BACK TO BACK PUSH IN CONDUIT HANGERS



Model #	Description
CHB-50	Back To Back Push In Conduit Hanger, For 1/2" EMT To 1/2" EMT
CHB-5075	Back To Back Push In Conduit Hanger, For 1/2" EMT To 3/4" EMT
CHB-50100	Back To Back Push In Conduit Hanger, For 1/2" EMT To 1" EMT
CHB-75	Back To Back Push In Conduit Hanger, For 3/4" EMT To 3/4" EMT
CHB-75100	Back To Back Push In Conduit Hanger, For 3/4" EMT To 1" EMT
CHB-100	Back To Back Push In Conduit Hanger, For 1" EMT To 1" EMT

BACK TO BACK SNAP LOCK CONDUIT HANGERS



Model #	Description
KCB-50100	Snap Close Conduit To Conduit Clamp, 1/2" Or 3/4" To 1" Conduit
KCB-100100	Snap Close Conduit To Conduit Clamp, 1" To 1" Conduit
KCB-100125	Snap Close Conduit To Conduit Clamp, 1" To 1-1/4" Conduit

CEILING GRID CONDUIT HANGERS



Model #	Description
CHPT-50	Push In Conduit Hanger With T Grid Clip, For 1/2" EMT
CHPT-75	Push In Conduit Hanger With T Grid Clip, For 3/4" EMT
CHPT-100	Push In Conduit Hanger With T Grid Clip, For 1" EMT
TC-5075	1/2" Or 3/4" Conduit Hanger With T-Grid Clip Attachment

PULLING AND BENDING

In addition to making it easier to join conduit with *SIMPush™* fittings, Southwire's Maxis line of bending equipment is designed to help you get your conduit installed faster and your wire pulled with ease.

QWIKrope® PULLING ROPE



Model #	Stock #	Diameter	Length	Avg. Breaking Strength	Total Weight
SPR183	583874	1/8"	300 ft.	1,100 lb.	2.5 lb.
SPR143	583875	1/4"	300 ft.	7,500 lb.	6.5 lb.
SPR146	585263	1/4"	600 ft.	7,500 lb.	11 lb.
SPR963	583056	9/16"	300 ft.	32,000 lb.	26 lb.
SPR966	583057	9/16"	600 ft.	32,000 lb.	52 lb.
SPR969	583058	9/16"	900 ft.	32,000 lb.	77 lb.

DOUBLE BRAIDED PULLING ROPE



Model #	Stock #	Diameter	Length	Avg. Breaking Strength	Total Weight
P-963	568235	9/16"	300 ft.	14,000 lb.	50 lb.
P-966	568236	9/16"	600 ft.	14,000 lb.	75 lb.
P-583	568237	5/8"	300 ft.	18,000 lb.	63 lb.
P-586	568239	5/8"	600 ft.	18,000 lb.	85 lb.
P-786	568240	7/8"	600 ft.	31,000 lb.	240 lb.
P-789	577913	7/8"	900 ft.	31,000 lb.	269 lb.

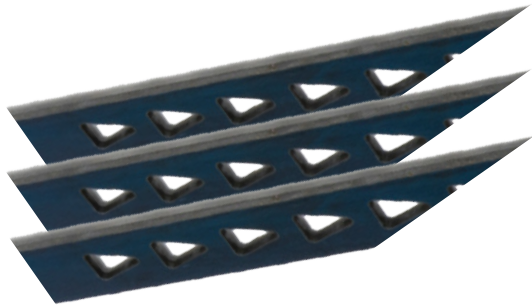
PULLING AND BENDING

QWIKline™ & QWIKtape™



Model #	Stock #	Description	Tensile Strength	Width	Length	Length	Pallet Quantity
SWCMT160-3000S	64584901	Conduit Measuring Tape 160-LB x 3000-FT Spool	160 lbs	3/16"	3,000'	914 m	144
SWMT400-4500P	64585001	QWIKtape™ 400 lbs x 4500 ft Bucket	400 lbs	3/16"	4,500'	1,372 m	36
SWMT1250-3000S	64585101	QWIKtape™ 1250 lbs x 3000 ft Spool	1250 lbs	1/2"	3,000'	914 m	36
SWQT1250-500S	65128740	QWIKtape™ 1250 lbs x 500 ft Spool	1250 lbs	1/2"	500'	152 m	128
SWQT1250-1000S	65128840	QWIKtape™ 1250 lbs x 1000 ft Spool	1250 lbs	1/2"	1,000'	305 m	128
SWQT1250-1500S	65128940	QWIKtape™ 1250 lbs x 1500 ft Spool	1250 lbs	1/2"	1,500'	457 m	96
SWQT1250-5000S	65129040	QWIKtape™ 1250 lbs x 5000 ft Spool	1250 lbs	1/2"	5,000'	1,524 m	18
SWDQT1250-3000S	65129140	QWIKtape™ 1250 lbs x 3000 ft Spool DETECTABLE	1250 lbs	1/2"	3,000'	914 m	36
SWMT1800-3000S	64585201	QWIKtape™ 1800 lbs x 3000 ft Spool	1800 lbs	5/8"	3,000'	914 m	36
SWQT1800-500S	65129240	QWIKtape™ 1800 lbs x 500 ft Spool	1800 lbs	5/8"	500'	152 m	128
SWQT1800-1000S	65129340	QWIKtape™ 1800 lbs x 1000 ft Spool	1800 lbs	5/8"	1,000'	305 m	128
SWQT1800-1500S	65129440	QWIKtape™ 1800 lbs x 1500 ft Spool	1800 lbs	5/8"	1,500'	457 m	96
SWQT1800-5000S	65129540	QWIKtape™ 1800 lbs x 5000 ft Spool	1800 lbs	5/8"	5,000'	1,524 m	12
SWDQT1800-3000S	65129640	QWIKtape™ 1800 lbs x 3000 ft Spool DETECTABLE	1800 lbs	5/8"	3,000'	914 m	36
SWMT2500-3000S	64585401	QWIKtape™ 2500 lbs x 3000 ft Spool	2500 lbs	3/4"	3,000'	914 m	36
SWQT2500-500S	65129740	QWIKtape™ 2500 lbs x 500 ft Spool	2500 lbs	3/4"	500'	152 m	96
SWQT2500-1000S	65129840	QWIKtape™ 2500 lbs x 1000 ft Spool	2500 lbs	3/4"	1,000'	305 m	96
SWQT2500-1500S	65130040	QWIKtape™ 2500 lbs x 1500 ft Spool	2500 lbs	3/4"	1,500'	457 m	64
SWQT2500-5000S	65130140	QWIKtape™ 2500 lbs x 5000 ft Spool	2500 lbs	3/4"	5,000'	1,524 m	12
SWDQT2500-3000S	65130340	QWIKtape™ 2500 lbs x 3000 ft Spool DETECTABLE	2500 lbs	3/4"	3,000'	914 m	36
PL6500	58280540	QWIKline™ 210 lbs x 6500 ft Bucket	210 lbs	-	6,500'	1,981 m	36
PL500	58280640	QWIKline™ 210 lbs x 500 ft Canister	210 lbs	-	500'	152 m	N/A
PL2200	65130440	QWIKline™ 500 lbs x 2200 ft Bucket	500 lbs	-	2,200'	671 m	36

INDUSTRIAL GRIPIT® PULLING DEVICE



Model #	Stock #	Description	Lanyard Length
IG-06	648015	Industrial Gript™ 6" Pulling Device	6" length
IG-12	648016	Industrial Gript™ 12" Pulling Device	12" length
IG-18	648017	Industrial Gript™ 18" Pulling Device	18" length
IG-24	648018	Industrial Gript™ 24" Pulling Device	24" length
IG-30	648019	Industrial Gript™ 30" Pulling Device	30" length
IG-KIT	648020	Industrial Gript™ Pulling Device Kit	Staggered lengths (6", 12", 18", 24", & 30" lengths included)

SIMpull™ GRIPIT™ CIRCUIT SIZED PULLING HEAD



Model #	Stock #	Description		
CSPH1HD	58294505	SIMpull™ GRIPIT™ Circuit Sized Pulling Head		
		Width	Depth	Weight
CSPH1HD	1.5"	0.06"		1.3 oz

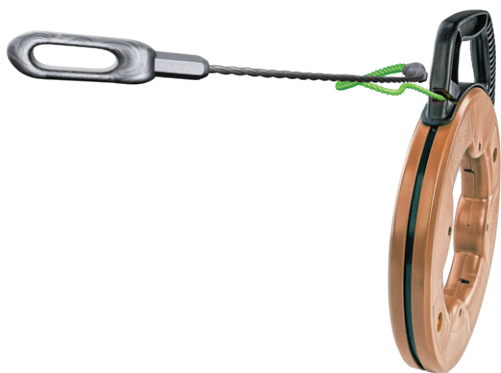
PULLING AND BENDING

SIMpull™ NON-CONDUCTIVE TIP FISH TAPE



Model #	Stock #	Description			
FTSP45-75NCT	630298	SIMpull™ Fish Tape 4.5mm 75'/22.8M, Large Case			
FTSP45-125NCT	631637	SIMpull™ Fish Tape 4.5mm 125'/38.1M, Large Case			
FTS3P-100NCT	630299	SIMpull™ Fish Tape 3mm 100'/30.4M, Medium Case			
	Length	Width	Depth	Diameter	Weight
FTSP45-75NCT	75'	13"	1.75"	4.5 mm	3.10 lb.
FTSP45-125NCT	125'	13"	1.75"	4.5 mm	2.50 lb.
FTS3P-100NCT	100'	8.75"	1.25"	3 mm	1.20 lb.

SIMpull™ FLEXIBLE METAL LEADER FISH TAPE



Model #	Stock #	Description			
FTSP45-75FML	598970	SIMpull™ Fish tape 4.5mm 75'/22.8M, Large Case			
FTSP45-125FML	598969	SIMpull™ Fish tape 4.5mm 125'/38.1M, Large Case			
FTS3P-100FML	598972	SIMpull™ Fish tape 3mm 100'/30.4M, Medium Case			
	Length	Width	Depth	Diameter	Weight
FTSP45-75FML	75'	13"	1.75"	4.5 mm	2.2 lb.
FTSP45-125FML	125'	13"	1.75"	4.5 mm	2.5 lb.
FTS3P-100FML	100'	8.75"	1.25"	3 mm	1.20 lb.

SIMpull™ FISH TAPE TUBE



Model #	Stock #	Description	
FTSP45-240FMLT	631647	SIMpull™ Fish Tape 4.5mm 240' Flexible Metal Leader/Non Conductive, Tube	
Length	Width	Depth	Weight
240'	22.75"	3.4"	3.4 lb.

MAXIS® XD1 EXTREME DUTY CIRCUIT PULLER



Model #	Stock #	Description	
XD1	65-09-09-01	Maxis® XD1 Extreme Duty Circuit Puller	
Length	Width	Depth	Weight
8.75"	8"	16.5"	8.8 lbs

PULLING AND BENDING

BENDMAX™ POWER BENDER



Model #	Stock #	Description		
PB2000	598406	Powered Bender 3/4"- 2" EMT,IMC, GRC Conduit		
	Depth	Width	Height	Weight
PB2000	38"	30"	50"	600 lb.

BENDMAX™ COMPACT POWER BENDER



Model #	Stock #	Description	CAPACITY	
BML2000	646012	BENDMAX™ Compact Power Bender	3/4"-2" EMT, IMC, GRC Conduit	
	Height	Width	Depth	Weight
BML2000	42.94"	27.125"	29.625"	500 lb.

BENDSTATION™ COMMON CART WORK STATION



Model #	Stock #	Description		
BSCC01	598407	BENDSTATION™ GRC for 3/4" and 1" GRC and IMC		
RB1000	598407	BENDSTATION™ for 3/4" and 1" GRC and IMC		
MB1250	647951	BENDSTATION™ for 1" and 1.25" EMT		
MB1000	643069	BENDSTATION™ for 3/4" and 1" EMT		
MB750	583152	BENDSTATION™ for 1/2" and 3/4" EMT		
	Depth	Width	Height	Weight
BSCC01	69"	29"	38.5"	170 lb.
RB1000	69"	29"	38.5"	180 lb.
MB1250	69"	29"	38.5"	185 lb.
MB1000	69"	29"	38.5"	150 lb.
MB750	69"	29"	38.5"	132 lb.

Model #	Stock #	Description	Capacity	
RBCCH-1000	643166	Head Kit for 3/4" - 1" GRC and IMC	3/4" - 1" GRC and IMC	
MBCCH-750	646010	Head Kit for 1/2" - 3/4" EMT	1/2" - 3/4" EMT	
MBCCH-1000	643167	Head Kit for 3/4" - 1" EMT	3/4" - 1" EMT	
MBCCH-1250	647953	Head Kit for 1" - 1.25" EMT	1" - 1.25" EMT	
	Depth	Width	Height	Weight
RBCCH-1000	9.20"	17.45"	20.80"	80 lb.
MBCCH-750	7.60"	16.13"	14.87"	32 lb.
MBCCH-1000	8.70"	16.63"	16.61"	49 lb.
MBCCH-1250	10"	12.75"	15.23"	86 lb.

BENDDOLLY™ BENDING PLATFORM



Model #	Stock #	Description	Capacity	
BD1000R	646025	BENDdolly™ 3/4" - 1" GRC IMC Bender	3/4" - 1" IMC/GRC conduit	
BD-01	646011	BENDdolly™ Bending Platform	EMT, IMC/GRC bending shoe sizes 1/2" - 1.25"	
BD750E	646023	BENDdolly™ 1/2" - 3/4" EMT Bender	1/2" - 3/4" EMT conduit	
BD1000E	646024	BENDdolly™ 3/4" - 1" EMT Bender	3/4" - 1" EMT conduit	
BD1250E	646024	BENDdolly™ 1" - 1.25" EMT Bender	1" - 1.25" EMT conduit	
	Length	Width	Height	Weight
BD1000R	55"	26"	28.75"	140 lb.
BD-01	55"	26"	28.75"	60 lb.
BD750E	55"	26"	28.75"	92 lb.
BD1000E	55"	26"	28.75"	110 lb.
BD1250E	55"	26"	28.75"	145 lb.

BENDING SHOE HEAD KITS

Model #	Stock #	Description	Capacity	
MBCCH-750	646010	Head Kit for 1/2"-3/4" EMT	1/2"-3/4" EMT	
MBCCH-1000	643167	Head Kit for 3/4"-1" EMT	3/4"-1" EMT	
MBCCH-1250	647953	Head Kit for 1"-1.25" EMT	1"-1.25" EMT	
RBCCH-1000	643166	Head Kit for 3/4"-1" GRC/IMC	3/4"-1" GRC/IMC	
	Height	Width	Depth	Weight
MBCCH-750	14.87"	16.13"	7.60"	32 lb.
MBCCH-1000	16.61"	16.63"	8.70"	49 lb.
MBCCH-1250	15.23"	12.75"	10"	85 lb.
RBCCH-1000	20.80"	17.45"	9.20"	80 lb.

1/2' TO 6' PVC MOTORIZED BENDER



Model #	Stock #	Description		
PVCB-06M	643013	1/2' to 6' PVC Motorized Bender		
	Depth	Width	Height	Weight
PVCB-06M	11.75"	73"	16.5"	81 lb.

1/2' TO 6' PVC BENDER



Model #	Stock #	Description		
PVCB-06	643012	1/2' to 6' PVC Bender		
	Depth	Width	Height	Weight
PVCB-06	11.75"	73"	16.5"	80 lb.

1/2' TO 4' PVC BENDER



Model #	Stock #	Description		
PVCB-04	643011	1/2' to 4' PVC Bender		
	Depth	Width	Height	Weight
PVCB-04	8.5"	56"	13"	50 lb.

1/2' TO 2' PVC BENDER



Model #	Stock #	Description		
PVCB-02	64812201	1/2' to 2' PVC Bender		
	Depth	Width	Height	Weight
PVCB-02	32"	10"	11"	19 lb.

PULLING AND BENDING

HAND BENDERS



Model #	Stock #	Description			
MCB1	582814	1" EMT Conduit Bender with Handle (Ductile Iron Head)			
MCB3/4	582812	3/4" EMT Conduit Bender with Handle (Aluminum Head)			
MCB1/2	582813	1/2" EMT Conduit Bender with Handle (Aluminum Head)			
HEIGHT	WIDTH	DEPTH	WEIGHT	CONDUIT SIZE	
MCB1	1.75"	12"	45"	13 lb.	1" EMT, 3/4" Rigid
MCB3/4	1.25"	9"	39"	9 lb.	3/4" EMT, 1/2" Rigid
MCB1/2	1.25"	8"	39"	7 lb.	1/2" EMT



Southwire®

SIMPUSH™

PUSH TO INSTALL CONDUIT FITTINGS

CATALOG

GET SOCIAL WITH US:



[/SOUTHWIRETOOLS](#)
[/SOUTHWIRETOOLSLATINO](#)



[@SOUTHWIRETOOLS](#)



[@SOUTHWIRETOOLS](#)



[SOUTHWIRETOOLS](#)

[SOUTHWIRETOOLS.COM](#) | 1-855-SWTTOOLS

All Trademarks or Registered Trademarks (™/®) are owned or licensed by Southwire Company.
Any other ™/®- Trademark or Registered Trademark of Southwire Company.