



Report of Test

LLIA001617-005

Integrating Sphere Report

Catalog Number: LPT36W-850-E39-G4 Medium Setting (27W)

Mogul-base retrofit lamp mounted VBU, formed plastic housing, formed aluminum heatsinks, clear plastic enclosures. 144 white LEDs, 8 CLW08E-36WC-16C1B-2835-A0 LED boards with 16 LEDs each and one CLW08E-36/63WD-16C1B-2835-A1 LED board with 16 LEDs

One internal LED driver



Performance Summary

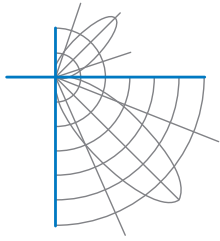
Voltage	120.0 Vac
Current	0.2473 A
Power	28.78 W
Frequency	59.99 Hz
Power Factor	0.969
Current THD	12.6 %
Total Luminous Flux	4639.5 lm
Efficacy	161.2 lm/W
Chromaticity (x,y)	(0.3428, 0.3546)
(u',v')	(0.2087, 0.4858)
Duv	0.0024
CCT	5099 K
CRI (Ra)	82
R9	2
TM-30: Rf	81
TM-30: Rg	96
TM-30: Rcs,h1	-13

Prepared For:

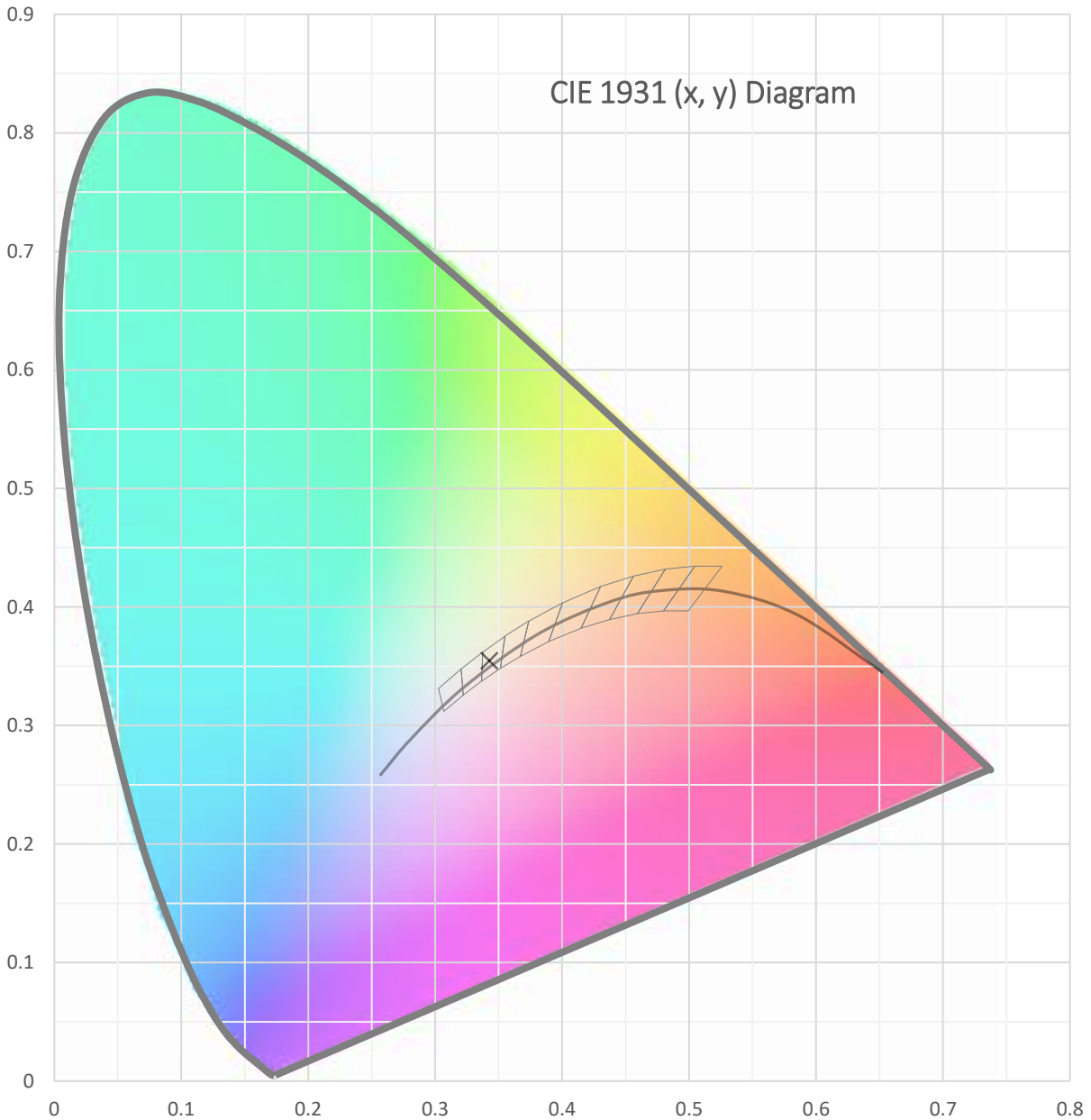
Topaz Lighting Corp
925 Waverly Avenue
Holtsville, NY 11742, USA

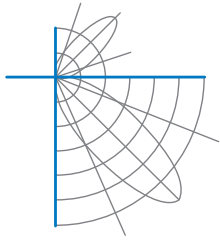
Test date: 12/21/2021
Report date: 12/30/2021

Signed: _____

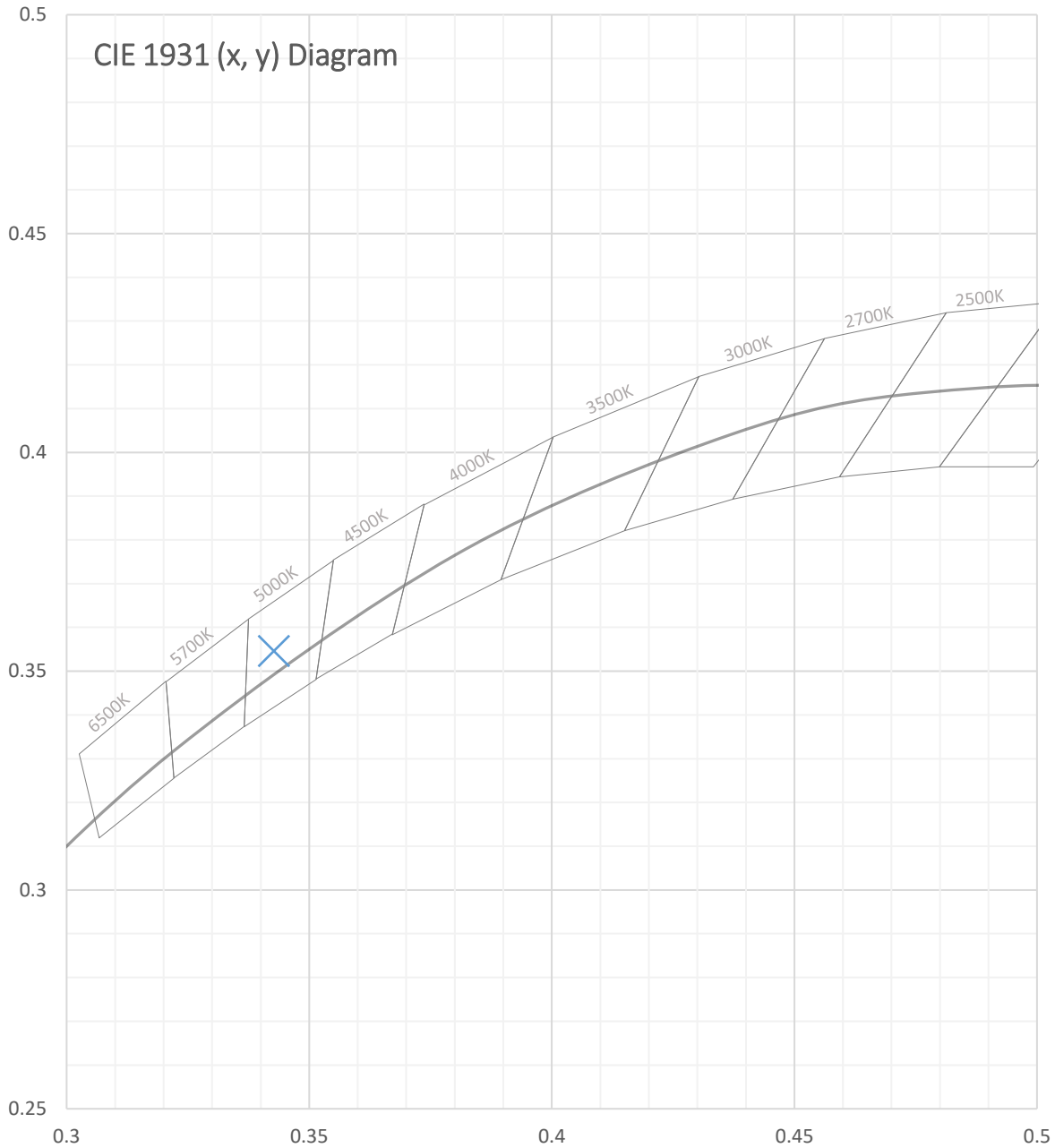


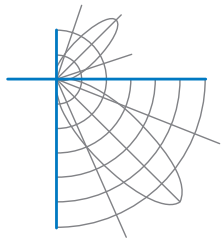
Test Report Number: LLIA001617-005





Test Report Number: LLIA001617-005





Test Report Number: LLIA001617-005

Total Radiant Flux	14.47 W
Total Luminous Flux	4639.5 Lm
Chromaticity CIE 1931 (x, y)	(0.3428, 0.3546)
Chromaticity CIE 1976 (u', v')	(0.2087, 0.4858)
Correlated Color Temperature (CCT)	5099 K
Color Rendering Index (Ra)	82
R1	80
R2	86
R3	91
R4	82
R5	81
R6	81
R7	86
R8	66
R9	2
R10	67
R11	82
R12	61
R13	81
R14	95
TM-30: Rf	81
TM-30: Rg	96
TM-30: Rcs,h1	-13
Distance from Planckian Locus (Duv)	0.0024
Scotopic/Photopic Ratio ‡	1.945

Electrical Data

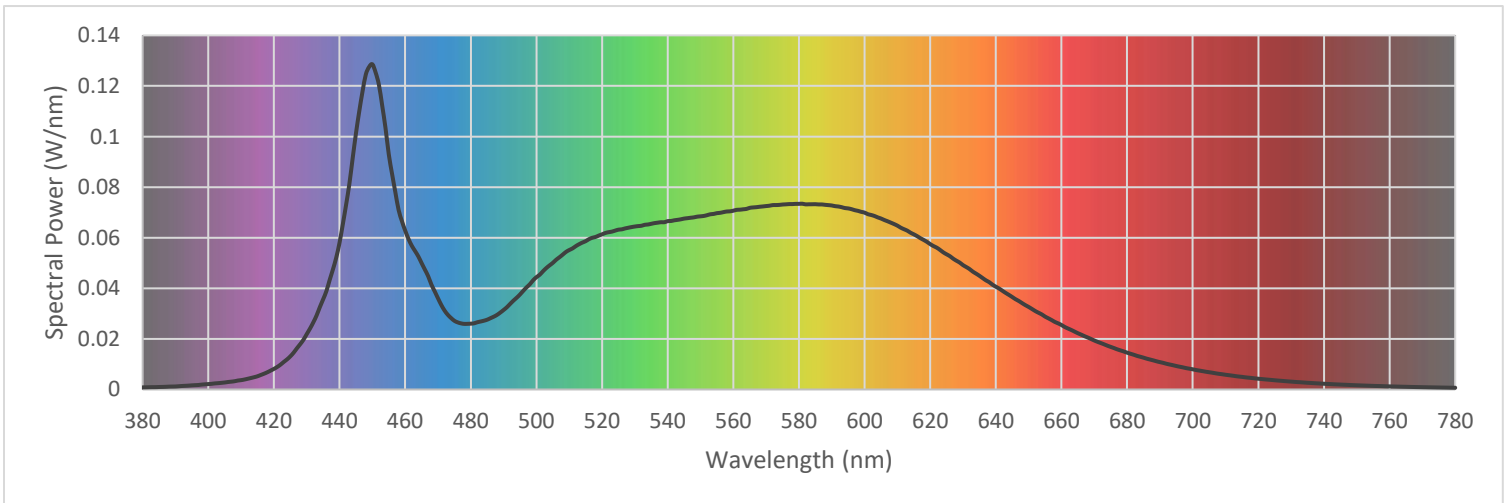
Voltage	120.0 Vac
Current	0.2473 A
Power	28.78 W
Frequency	59.99 Hz
Power Factor	0.969
Current THD	12.6 %



Test Report Number: LLIA001617-005

Summary Spectral Power Distribution (wavelength - nm, spectral power - W/nm)

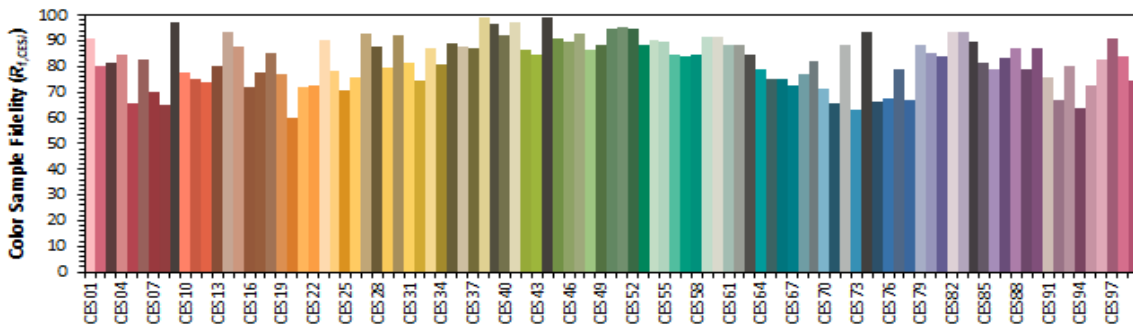
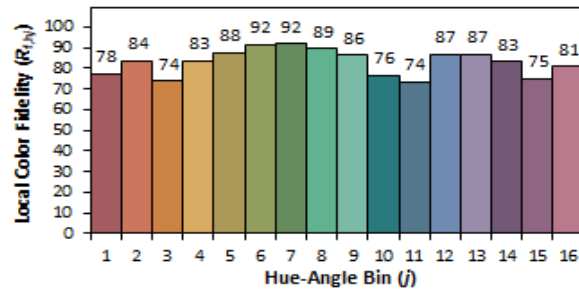
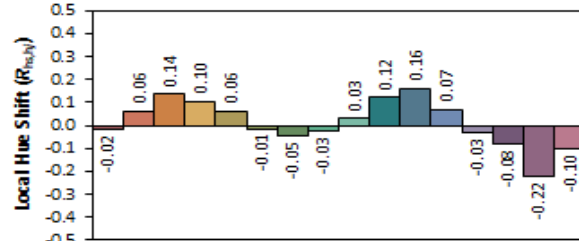
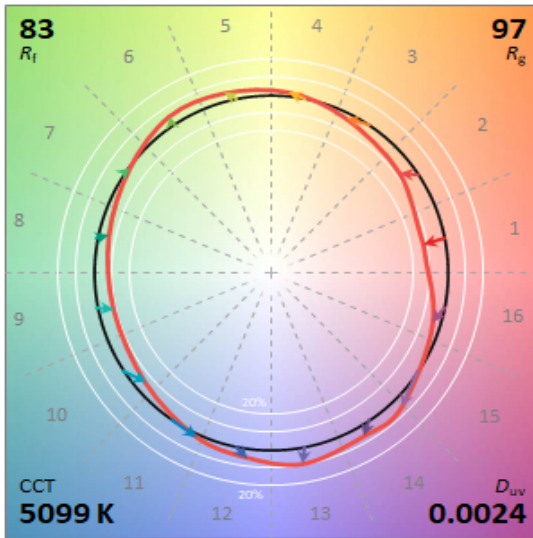
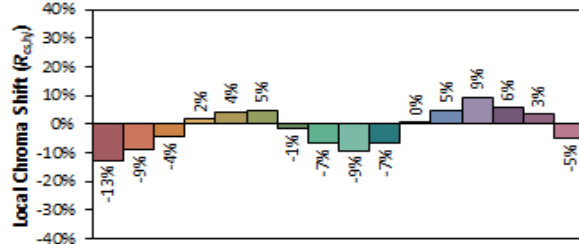
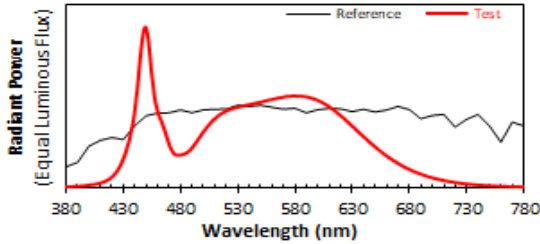
380	0.000837	480	0.026015	580	0.073384	680	0.014558
385	0.000973	485	0.027593	585	0.073250	685	0.012572
390	0.001188	490	0.031432	590	0.072741	690	0.010812
395	0.001631	495	0.037576	595	0.071585	695	0.009271
400	0.002134	500	0.044402	600	0.069922	700	0.007973
405	0.002756	505	0.050070	605	0.067586	705	0.006818
410	0.003683	510	0.055124	610	0.064773	710	0.005820
415	0.005225	515	0.058628	615	0.061335	715	0.004984
420	0.008131	520	0.061336	620	0.057469	720	0.004250
425	0.013105	525	0.063178	625	0.053437	725	0.003633
430	0.021888	530	0.064426	630	0.049164	730	0.003110
435	0.035651	535	0.065506	635	0.044939	735	0.002647
440	0.058094	540	0.066564	640	0.040629	740	0.002262
445	0.101281	545	0.067558	645	0.036549	745	0.001941
450	0.128565	550	0.068459	650	0.032628	750	0.001655
455	0.093003	555	0.069711	655	0.028815	755	0.001418
460	0.062797	560	0.070677	660	0.025489	760	0.001224
465	0.049969	565	0.071806	665	0.022241	765	0.001049
470	0.036042	570	0.072513	670	0.019377	770	0.000903
475	0.027142	575	0.073119	675	0.016830	775	0.000783
						780	0.000677



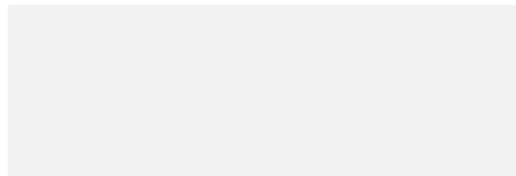


Test Report Number: LLIA001617-005

IES TM-30 Details



Notes:



x 0.3427
y 0.3545
u' 0.2087
v' 0.4857

CIE 13.3-1995
(CRI)
R_a 82
R_s 2



Test Report Number: LLIA001617-005

Test Equipment Configuration: LightLab International Allentown 2m Integrating Sphere
Measurements acquired using a Labsphere CDS 2600 spectroradiometer
Testing was performed using 4π geometry

Test Temperature: 24.9 °C

Test Procedure: Tested in accordance with the applicable sections of:
LM-79-19, LM-78-20, LM-58-20, ANSI_ANSLG C78.377-2017, TM-30-20

Significance: The laboratory has not participated in the selection of samples to be tested.
All testing is performed on the understanding that the significance of the report is limited to the extent that the test sample is representative of production units.

Notes: The measurements and other derived quantities contained in this report are based on the absolute data as measured.

Prorating the performance of the sample for the use of other component combinations (such as lamp / LED / Ballast / driver), or for use in different environmental conditions than that tested, may produce erroneous results.

This report is free of erasures and corrections

This report may contain data that are not covered by the NVLAP accreditation. Quantities marked with ‡ are not covered.

This report must not be used by the customer to claim product certification, approval or endorsement by NVLAP, NIST, or any agency of the Federal Government.