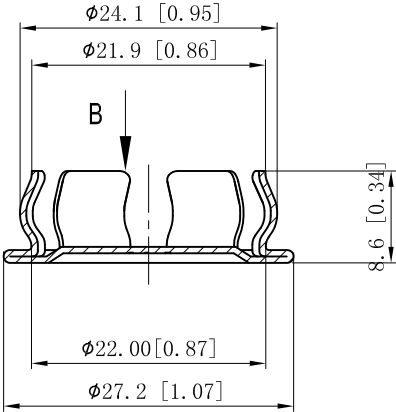
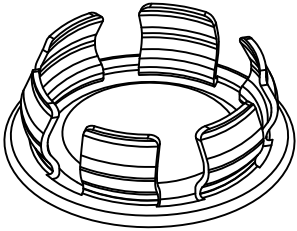
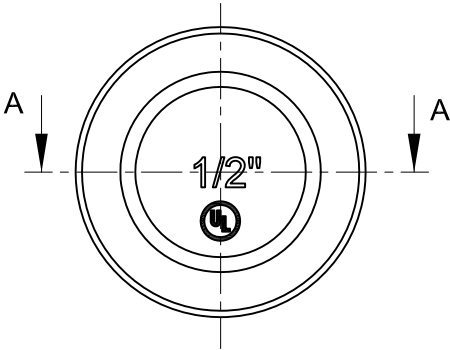
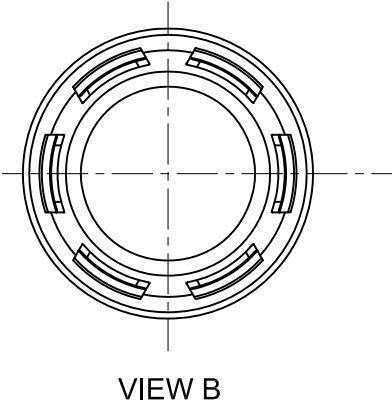


SIDES	BOTTOM
Material:Steel-0.023"-Galvanized Steel	



VIEW A-A

This data sheet is for reference only .GARVIN INDUSTRIES reserves the right to make changes to the design without prior notice.

DESCRIPTION	the right to make changes to this design without prior notice.			
	STANDARD PACKING	GARVIN INDUSTRIES		
	100/1000 PCS	TITLE "SNAP-IN" KNOCKOUT SEALS		
		SIZE A4	DWG NO. SNAP50	REV A
		DATA SHEET		
TRADE REFERENCE TERMS				
	www.garvinindustries.com			