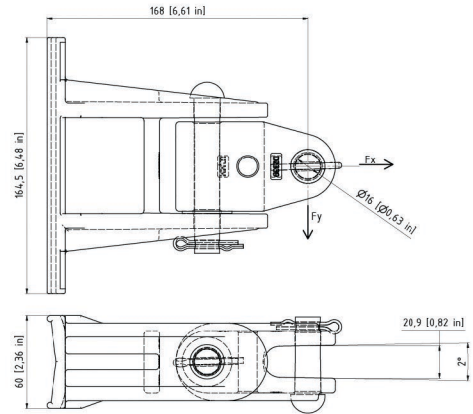
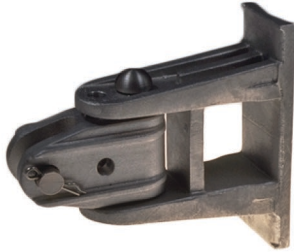


# Hinge with clevis fork vertical, complete, to round pole

Item number D2361-01



## Loads

### Axial Tension

Average breaking load	Fx	60 kN* / 13488 LBF
Maximale design load	MDL = Fx	60 kN* / 13488 LBF
Working load limit	WLL = MDL/S	20 kN / 4496 LBF
Safety factor	S	3

\*Max. force of tensile testing mashine

### Transversal tension

Average breaking load	Fy	21.67 kN / 4891.5 LBF
Maximum design load	MDL = 0.9*Fy	19.6 kN / 4401.9 LBF
Work load limit	WLL = MDL/S	6.5 kN / 1468.3 LBF

Safety factor	S	3
---------------	---	---

## Material and weight

Material: Al/SST  
Weight: 1.420 kg

## Comments

- Attachment to round poles D= > 150 mm
- Pole clamps with band to be ordered separately
- The attachment material to bracket (straight or inclined) must be ordered separately



**Southwire™**



A COLAS RAIL COMPANY

Contact Us: [Transit@southwire.com](mailto:Transit@southwire.com)