

Report of Test

LLIA001617-011

Integrating Sphere Report

Catalog Number: LPT80W-850-EX39-G4 Medium Setting (63W)

Mogul-base retrofit lamp mounted VBU, formed plastic housing, formed aluminum heatsinks, clear plastic enclosures. 350 white LEDs, 12 CLW08E-80WC-14C2B-2835-A1 LED boards with 28 LEDs each and one CLW08E-80WD-14C1B-2835-A1 LED board with 14 LEDs

One internal LED driver



Performance Summary

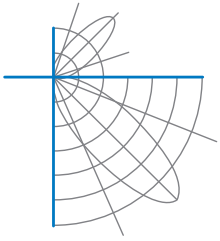
Voltage	120.0 Vac
Current	0.5187 A
Power	61.37 W
Frequency	59.99 Hz
Power Factor	0.986
Current THD	11.6 %
Total Luminous Flux	10183.7 lm
Efficacy	165.9 lm/W
Chromaticity (x,y)	(0.3430, 0.3547)
(u',v')	(0.2088, 0.4858)
Duv	0.0024
CCT	5092 K
CRI (Ra)	81
R9	1
TM-30: Rf	81
TM-30: Rg	96
TM-30: Rcs,h1	-13

Prepared For:

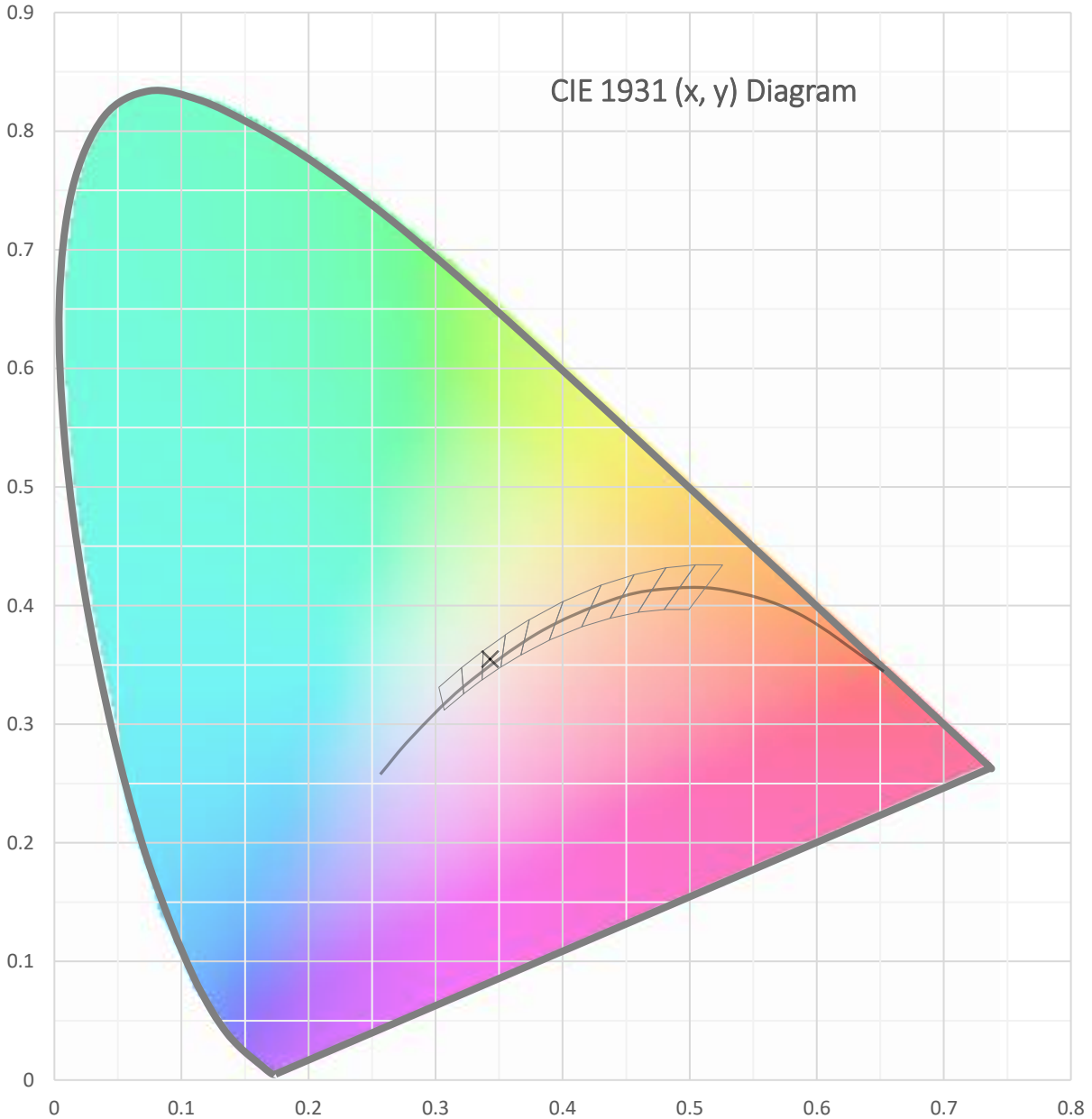
Topaz Lighting Corp
925 Waverly Avenue
Holtsville, NY 11742, USA

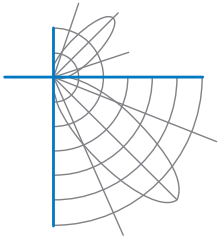
Test date: 12/28/2021
Report date: 12/30/2021

Signed: _____

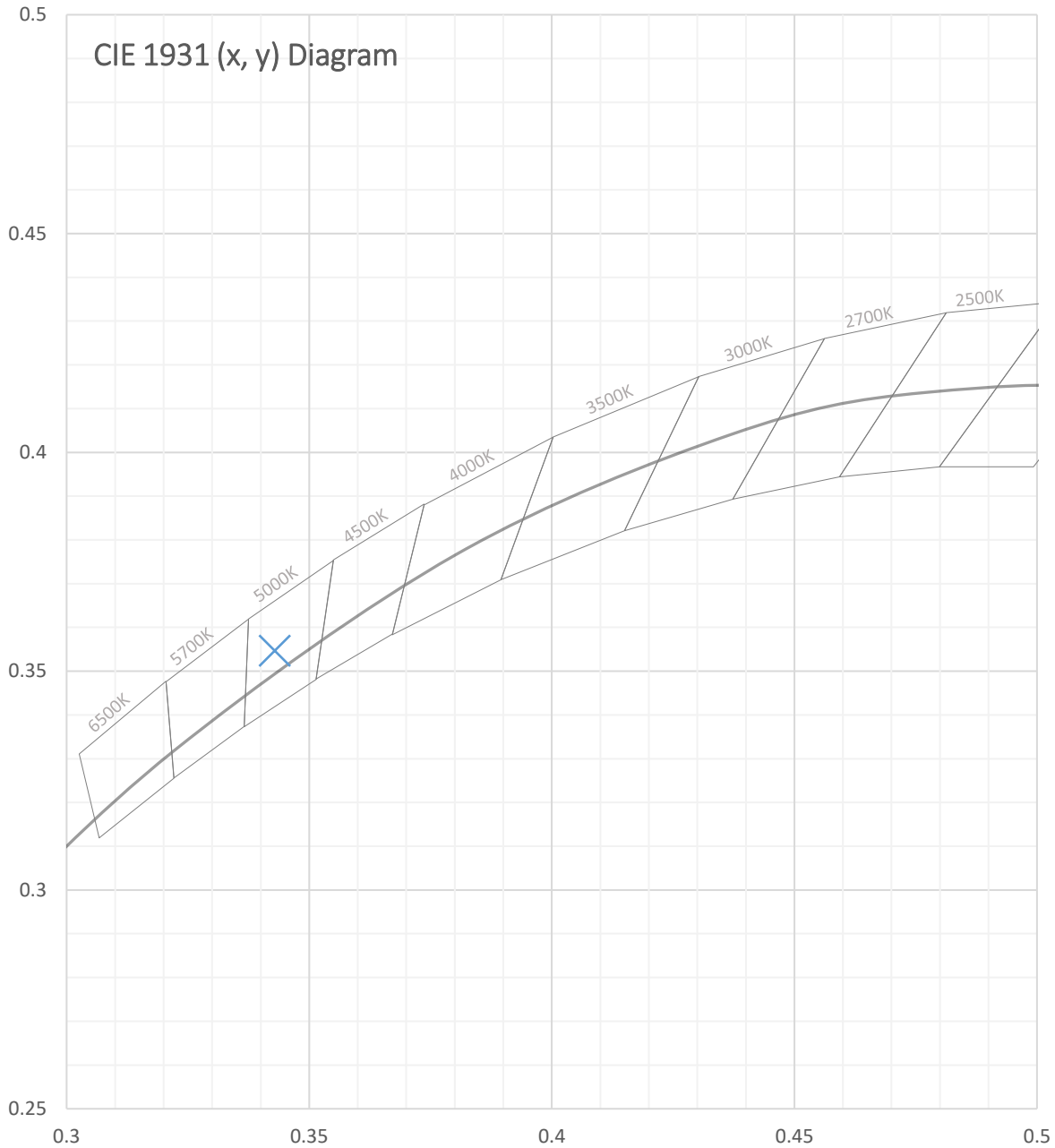


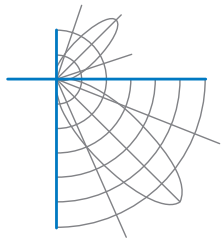
Test Report Number: LLIA001617-011





Test Report Number: LLIA001617-011





Test Report Number: LLIA001617-011

Total Radiant Flux	31.73 W
Total Luminous Flux	10183.7 Lm
Chromaticity CIE 1931 (x, y)	(0.3430, 0.3547)
Chromaticity CIE 1976 (u', v')	(0.2088, 0.4858)
Correlated Color Temperature (CCT)	5092 K
Color Rendering Index (Ra)	81
R1	80
R2	86
R3	91
R4	82
R5	81
R6	81
R7	86
R8	66
R9	1
R10	67
R11	82
R12	61
R13	81
R14	95
TM-30: Rf	81
TM-30: Rg	96
TM-30: Rcs,h1	-13
Distance from Planckian Locus (Duv)	0.0024
Scotopic/Photopic Ratio ‡	1.942

Electrical Data

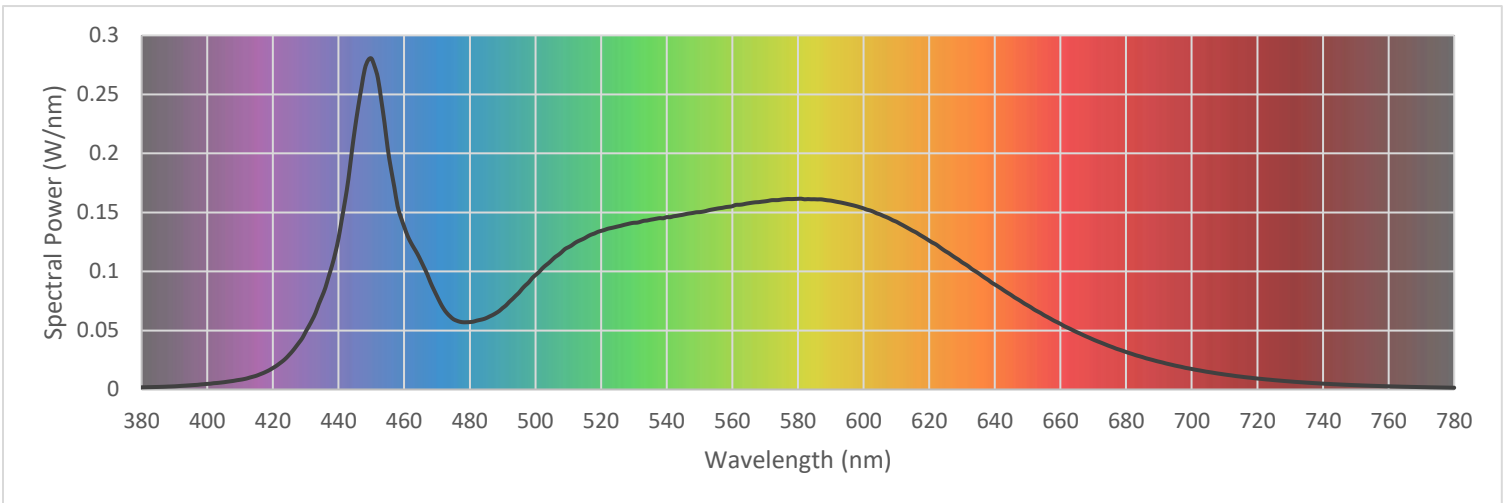
Voltage	120.0 Vac
Current	0.5187 A
Power	61.37 W
Frequency	59.99 Hz
Power Factor	0.986
Current THD	11.6 %

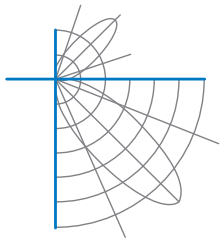


Test Report Number: LLIA001617-011

Summary Spectral Power Distribution (wavelength - nm, spectral power - W/nm)

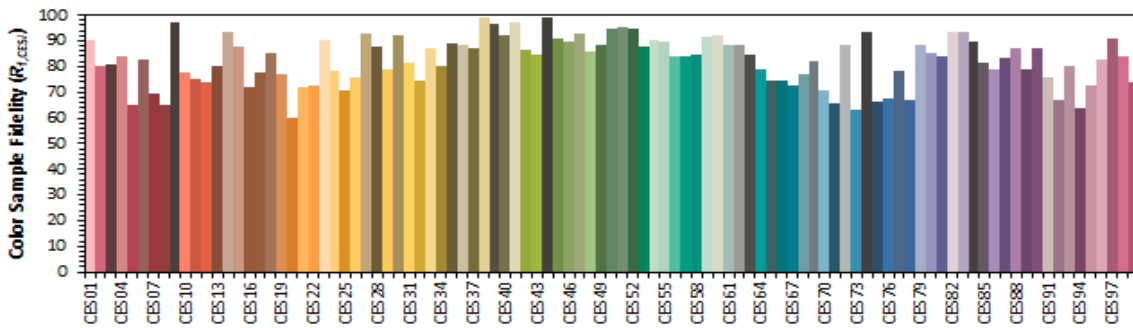
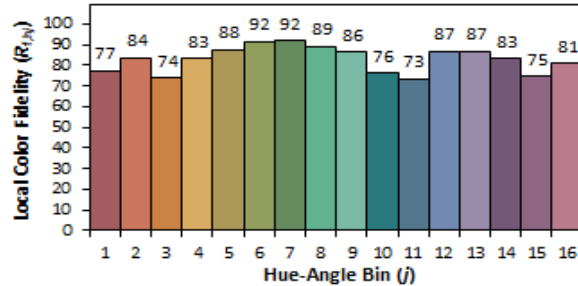
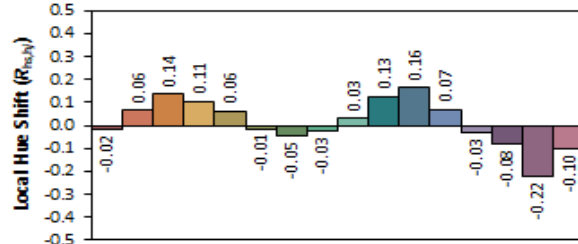
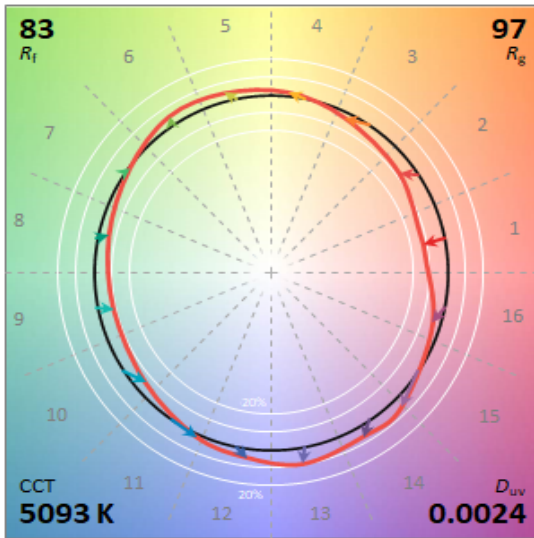
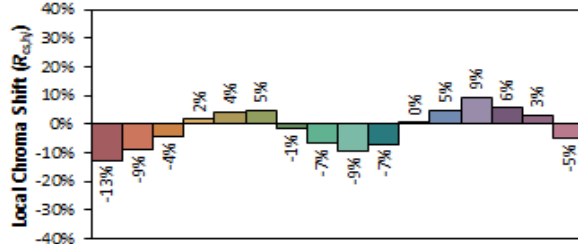
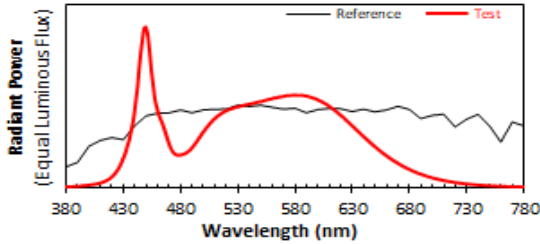
380	0.001835	480	0.057092	580	0.161531	680	0.031734
385	0.002147	485	0.060464	585	0.161173	685	0.027409
390	0.002662	490	0.068989	590	0.160009	690	0.023561
395	0.003594	495	0.082041	595	0.157191	695	0.020197
400	0.004723	500	0.096916	600	0.153426	700	0.017360
405	0.006114	505	0.109604	605	0.148359	705	0.014837
410	0.008206	510	0.120464	610	0.142123	710	0.012692
415	0.011667	515	0.128166	615	0.134393	715	0.010866
420	0.018198	520	0.134324	620	0.126098	720	0.009265
425	0.029492	525	0.138044	625	0.117050	725	0.007930
430	0.048999	530	0.141224	630	0.107727	730	0.006796
435	0.079073	535	0.143752	635	0.098528	735	0.005782
440	0.128236	540	0.146063	640	0.088914	740	0.004938
445	0.221271	545	0.148059	645	0.079992	745	0.004244
450	0.280412	550	0.150238	650	0.071248	750	0.003632
455	0.203879	555	0.153066	655	0.062897	755	0.003116
460	0.137885	560	0.155235	660	0.055567	760	0.002685
465	0.109508	565	0.157785	665	0.048546	765	0.002305
470	0.079040	570	0.159399	670	0.042286	770	0.001981
475	0.059556	575	0.160894	675	0.036700	775	0.001712
						780	0.001480





Test Report Number: LLIA001617-011

IES TM-30 Details



Notes:

x 0.3429
y 0.3546
u' 0.2088
v' 0.4858

CIE 13.3-1995
(CRI)
 R_a 81
 R_s 1



Test Report Number: LLIA001617-011

Test Equipment Configuration: LightLab International Allentown 2m Integrating Sphere
Measurements acquired using a Labsphere CDS 2600 spectroradiometer
Testing was performed using 4π geometry

Test Temperature: 25.4 °C

Test Procedure: Tested in accordance with the applicable sections of:
LM-79-19, LM-78-20, LM-58-20, ANSI_ANSLG C78.377-2017, TM-30-20

Significance: The laboratory has not participated in the selection of samples to be tested.
All testing is performed on the understanding that the significance of the report is limited to the extent that the test sample is representative of production units.

Notes: The measurements and other derived quantities contained in this report are based on the absolute data as measured.

Prorating the performance of the sample for the use of other component combinations (such as lamp / LED / Ballast / driver), or for use in different environmental conditions than that tested, may produce erroneous results.

This report is free of erasures and corrections

This report may contain data that are not covered by the NVLAP accreditation. Quantities marked with ‡ are not covered.

This report must not be used by the customer to claim product certification, approval or endorsement by NVLAP, NIST, or any agency of the Federal Government.

Sphere Report Template V2-17