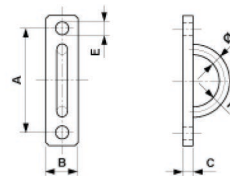


Anchor plate horizontal with eye, Ø = 16 mm

Item number E1234-01



Dimensions

R: 40 mm
Ø: 16 mm
A: 160 mm
B: 50 mm
C: 16 mm
E: 20 mm

Material and weight

Weight: 1.340 kg
Material: STL HDG

Comments

- To be used on fair-faced concrete fronts, concrete bearing walls, concrete pillars, etc.
- Mounting parts (to be ordered separately):
 - On Unistrut channel type 3B
2 T-bolts M16 x 40 with hexagon nut
part no. 352346
2 washers 17/34 x 3, part no. 350480
 - On slush anchor M16
2 hexagon screw M16 x 50, part no. 350360
2 washers 17/34 x 3, part no. 350480
- Recommended load depends on the type of attachment
- Application recommendations on request



Southwire™



A COLAS RAIL COMPANY

Contact Us: Transit@southwire.com