



Southwire™

4" SQUARE LIFE SAFETY EXTENSION RINGS

2-1/8" DEEP - DRAWN OR WELDED WITH CONDUIT KNOCKOUTS

FEATURES

- Extension rings are painted red to distinguish them as fire alarm circuits

APPLICATIONS

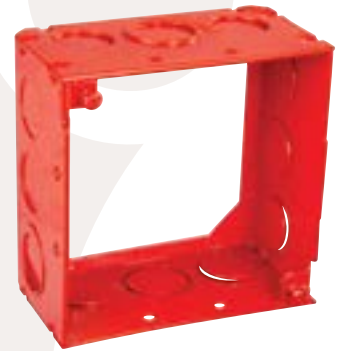
- Red extension rings are added to junction boxes to increase wiring capacity and provide access for additional conduit runs and electrical wire
- Extension rings prevent having to remove old conduit boxes and wiring from circuits when additional wiring is needed

STANDARD MATERIAL

- Powder coated galvanized steel

CERTIFICATIONS

- UL Listed



53171-RED



PART #	DESCRIPTION	RING TYPE	KNOCKOUTS	CUBIC INCHES (CM ³)	MASTER QTY.
			SIDE CONDUIT		
53171-RED	EXTENSION RING, CONCENTRIC KO'S, RED	WELDED	6) 1/2" & (6) 1/2" - 3/4"	30.3 (496.5)	25

Rev. 1, 3/24

**BUILT FOR DURABILITY.
BUILT FOR RELIABILITY.
BUILT FOR WORK.™**

1-855-798-6657 | SOUTHWIRE.COM

©2024 Southwire Company, LLC. All rights reserved.
*Registered Trademark & ™Trademark of Southwire Company, LLC.