

Job Name/Title: \_\_\_\_\_

Model #: \_\_\_\_\_

Contractor: \_\_\_\_\_



**Southwire™**

STRUCTURAL ATTACHMENTS

## FASTENERS/HARDWARE

# STRUT TO BEAM WINDOW CLAMP

### APPLICATION

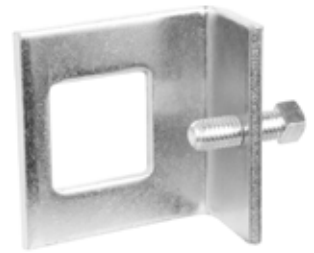
Use to secure strut channel to floor or flat surface.

### FEATURES

1/4" thick steel

### MATERIAL/FINISH

Steel/Electroplated zinc



**SFBC40**

PART #	FOR CHANNEL	MAX LOAD (LBS.) USED IN PAIRS	MATERIAL	BOX QTY.
SFBC40	1-5/8" x 1-5/8"	950	ZINC PLATED STEEL	20

Rev. 0, 03/23

**BUILT FOR DURABILITY.  
BUILT FOR RELIABILITY.  
BUILT FOR WORK.™**

**1-855-798-6657 | SOUTHWIRE.COM**

©2023 Southwire Company, LLC. All rights reserved.  
\*Registered Trademark & ™Trademark of Southwire Company, LLC.