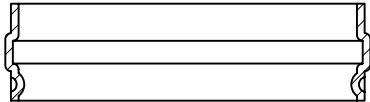
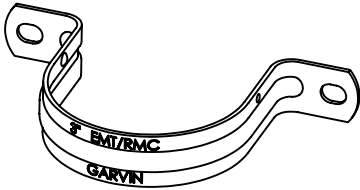
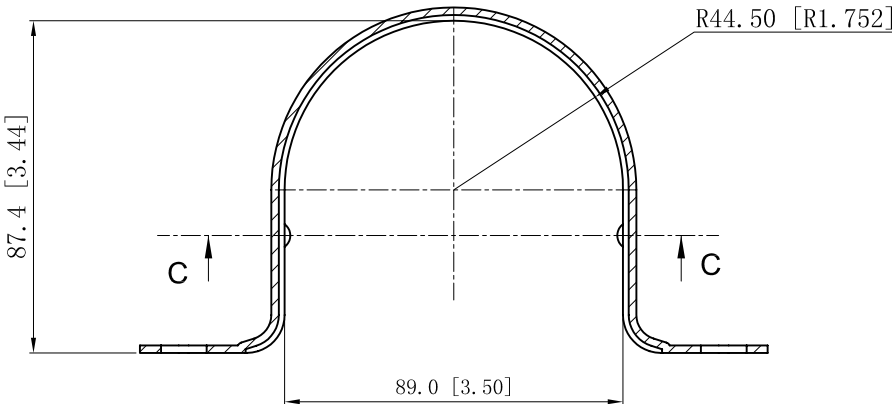


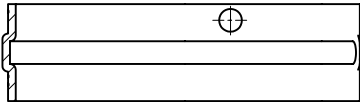
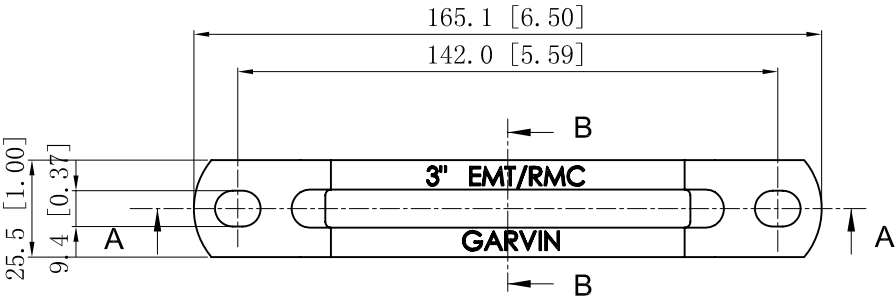
SIDES	BOTTOM
Material:Steel-(0.071"-0.079")-C. R. S Zinc Plated	



CUTAWAY VIEW C-C



CUTAWAY VIEW A-A



CUTAWAY VIEW B-B

DESCRIPTION
TRADE REFERENCE TERMS

This data sheet is for reference only .GARVIN INDUSTRIES reserves the right to make changes to the design without prior notice.

STANDARD PACKING	GARVIN INDUSTRIES		
10 PCS	TITLE		
	TWO-HOLE STRAPS		
	SIZE	DWG NO.	REV
	A4	THS-300	
DATA SHEET			