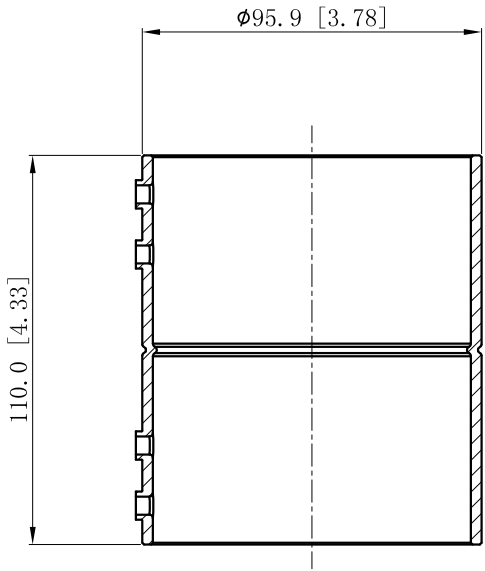
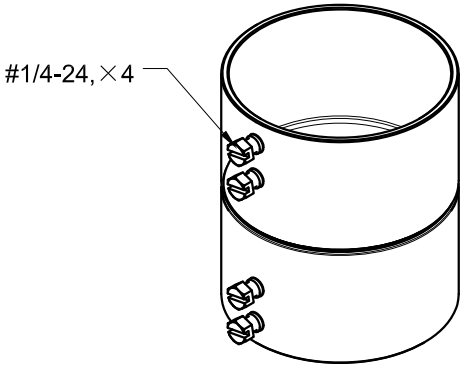
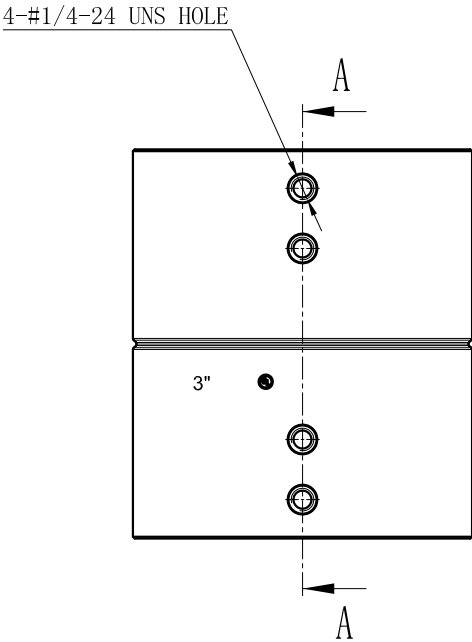


SIDES	BOTTOM
4 PCS #1/4-24×3/8 Screws Installed	
Material:Steel-Welding tube, zinc plated	



CUTAWAY VIEW A-A



DESCRIPTION
TRADE REFERENCE TERMS

This data sheet is for reference only .GARVIN INDUSTRIES reserves the right to make changes to the design without prior notice.

STANDARD PACKING	GARVIN INDUSTRIES		
5 PCS	TITLE		
	STEEL EMT SET SCREW COUPLINGS		
	SIZE	DWG NO.	REV
	A4	SSCP-300	
DATA SHEET			