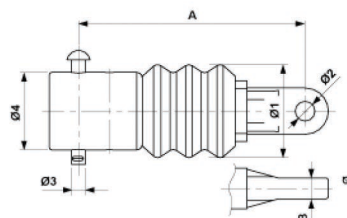


# Pipe-end insulator with tongue complete, composite, to pipe G2" and 2" Schedule 40

Item number D2372-02



## Dimensions

B: 18 mm  
Ø2: 17 mm  
Ø3: 12 mm  
Ø1: 80 mm  
Ø4: 51.2 mm  
A: 195 mm

## Material and weight

Weight: 1.275 kg

## Loads

Breaking load: 30 kN

## Specification

Minimum creeping distance: 92 mm for insulator  
Operating voltage: max. 3.000 kV

## Comments

- Connection parts in Al
- Pin and cotter pin SST
- Other insulators on request



**Southwire™**



A COLAS RAIL COMPANY

Contact Us: [Transit@southwire.com](mailto:Transit@southwire.com)