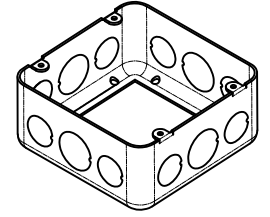
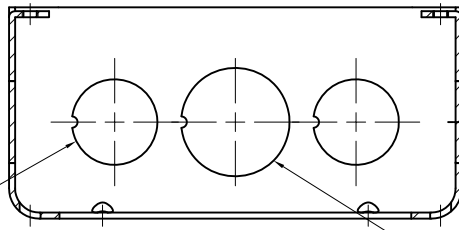


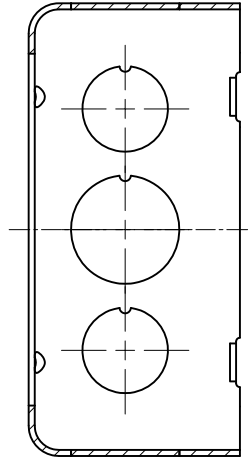
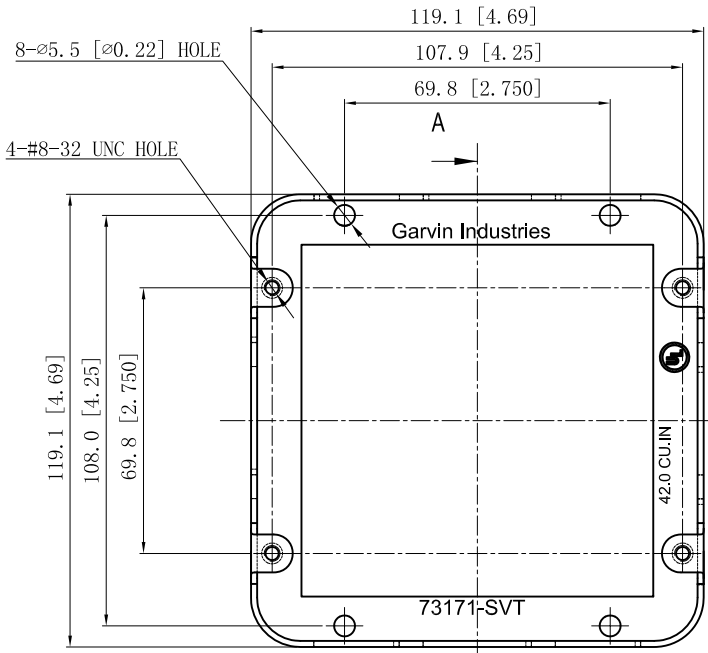
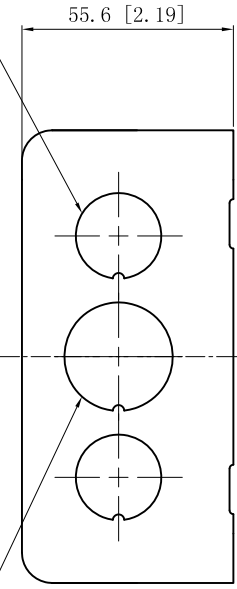
<b>SIDES</b>	<b>BOTTOM</b>
8 1/2" KNOCKOUTS	
4 3/4" KNOCKOUTS	
Material: Steel-0.0625"-G60 Galvanized	



4 1/2" KNOCKOUTS  $\phi=22.5$  [ $\phi=0.89$ ]  
MIRROR

2 3/4" KNOCKOUTS  $\phi=28.5$  [ $\phi=1.12$ ]  
MIRROR

4 1/2" KNOCKOUTS  $\phi=22.5$  [ $\phi=0.89$ ]  
MIRROR



CUTAWAY VIEW A-A

2 3/4" KNOCKOUTS  $\phi=28.5$  [ $\phi=1.12$ ]  
MIRROR

This data sheet is for reference only. GARVIN INDUSTRIES reserves the right to make changes to the design without prior notice.

<b>DESCRIPTION</b>
<b>TRADE REFERENCE TERMS</b>

<b>STANDARD PACKING</b>	<b>GARVIN INDUSTRIES</b>		
	TITLE 4-11/16" SQUARE EXTENSION RINGS 2-1/8" DEEP		
25 PCS	SIZE	DWG NO.	REV
	A4	73171-SVT	D
DATA SHEET			
www.garvinindustries.com			