



Southwire™

BEAM/PURLIN

CONDUIT BEAM CLAMP

APPLICATION

Snap-close conduit hanger/beam clamp assemblies are used when EMT or Rigid conduits must be supported below a structural beam.

FEATURES

Snap-close clip to secure conduit
1/2" max flange size

MATERIAL/FINISH

Spring Steel/GEOSEAL™

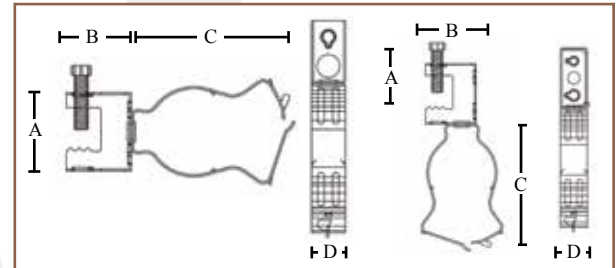
CERTIFICATIONS

UL Standard: UL 2239



BC812MSMTZ

BC16MTZ



PART #	CONDUIT SIZE	MOUNT TYPE	STATIC LOAD (LBS.)	A	B	C	D	BOX QTY.
BC812MTZ	1/2" or 3/4"	BOTTOM	100	1.42"	1.18"	2.05"	.63"	100
BC16MTZ	1"	BOTTOM	100	1.42"	1.18"	2.52"	.63"	100
BC20MTZ	1-1/4"	BOTTOM	100	1.42"	1.18"	2.96"	.63"	100
BC24MTZ	1-1/2"	BOTTOM	100	1.42"	1.18"	3.18"	.63"	50
BC32MTZ	2"	BOTTOM	100	1.42"	1.18"	3.88"	.63"	50
BC812MSMTZ	1/2" or 3/4"	SIDE	25	1.42"	1.18"	2.05"	.63"	100
BC16MSMTZ	1"	SIDE	25	1.42"	1.18"	2.52"	.63"	100
BC20MSMTZ	1-1/4"	SIDE	25	1.42"	1.18"	2.96"	.63"	100
BC24MSMTZ	1-1/2"	SIDE	25	1.42"	1.18"	3.18"	.63"	50
BC32MSMTZ	2"	SIDE	25	1.42"	1.18"	3.88"	.63"	50

Rev. 0, 03/23

**BUILT FOR DURABILITY.
BUILT FOR RELIABILITY.
BUILT FOR WORK.™**

1-855-798-6657 | SOUTHWIRE.COM

©2023 Southwire Company, LLC. All rights reserved.
*Registered Trademark & ™Trademark of Southwire Company, LLC.