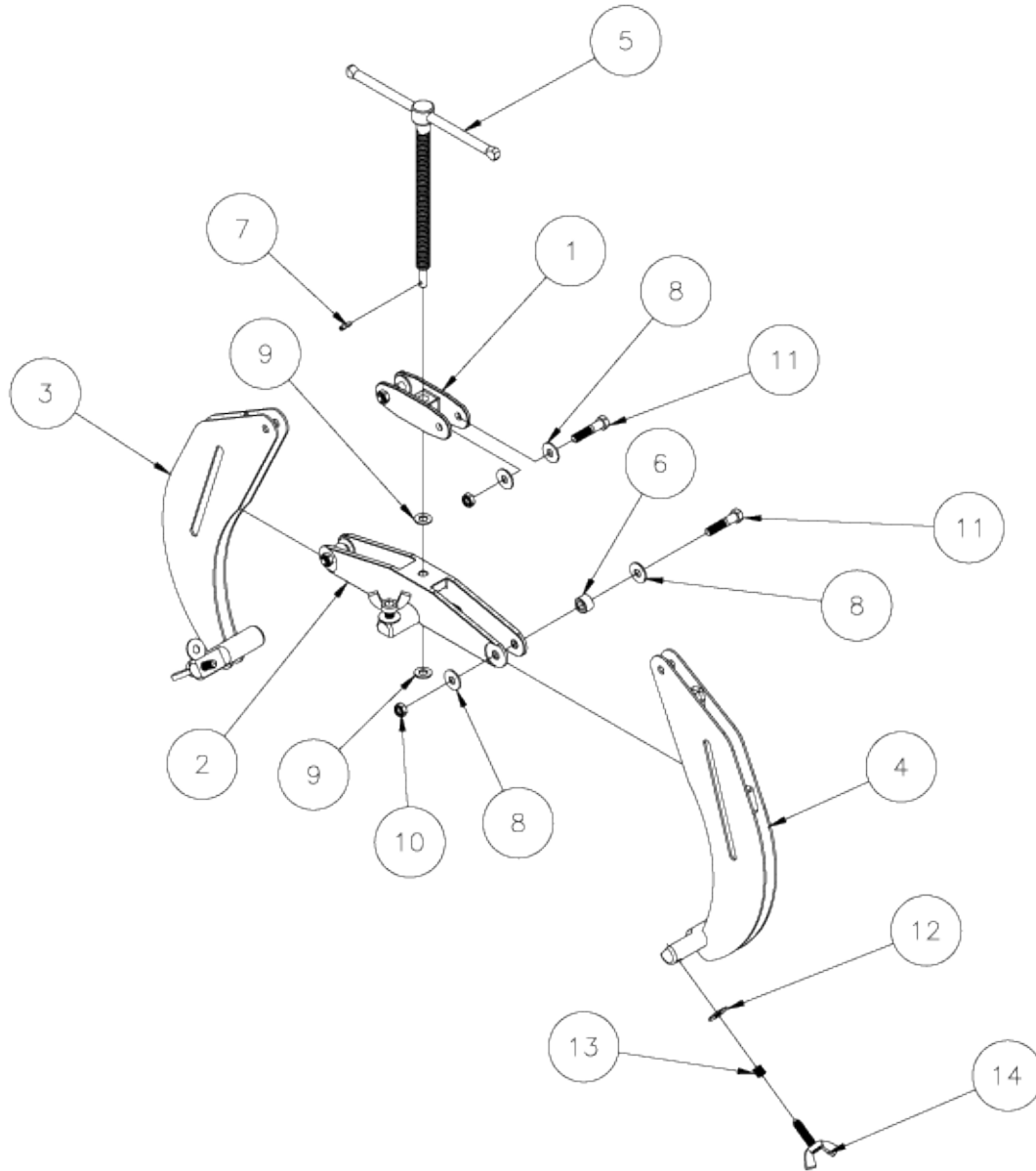


# ULTRA CLAMP\* PARTS



Item	Part No.	Description	Qty
1	781293	HEADER PLATE, 5-12"	1
1	783002	HEADER 2-1/2"	1
1	783004	HEADER 2-6"	1
2	781347	RAM WELDMENT, 6"	1
2	781351	RAM WELDMENT, 12"	1
2	781357	RAM WELDMENT, 2-1/2"	1
3	781349	CLAW WELDMENT, LEFT 2-1/2"	1
3	781352	CLAW WELDMENT, LEFT 6"	1
3	781358	CLAW WELDMENT, LEFT 12"	1
4	781348	CLAW WELDMENT, RIGHT 2-1/2"	1
4	781353	CLAW WELDMENT, RIGHT 6"	1
4	781359	CLAW WELDMENT, RIGHT 12"	1
5	781131	TEE HANDLE ASSY. 2-1/2" UC	1
5	781151	T-HANDLE ASSY. 6" UC	1
5	781171	T-HANDLE ASSY. 12"	1
6	781281	ROLLER, ULTRA CLAMP, 6", 12"	2
7	774092	PIN, ROLL 1/8 X 5/8" (2-1/2")	1
7	774096	PIN, ROLL 3/16 X 5/8" (6", 12")	1
8	773023	WASHER FL BRASS .25 (16L) (6", 12")	8
8	773024	WASHER FL BRASS .38 (3/8L) (2-1/2")	8
9	773021	WASHER FL HARD 1/4 (2-1/2")	2
9	773022	WASHER FL HARD .38 (6", 12")	2
10	772076	NUT, INSERT LOCK 1/4-20" (2-1/2")	4
10	772350	NUT, INSERT JAM 3/8-16" (6", 12")	4
11	771029	SCREW, HHC 1/4-20 X 1-3/4" (2-1/2)	4
11	771100	SCREW, HHC 3/8-16 X 1-3/4" (6", 12")	4
12	773016	WASHER, FLAT 5/16 TYPE B NARROW" (2-1/2")	3
12	773017	WASHER, FLAT 3/8 TYPE B NARROW" (6", 12")	3
13	776066	SPRING, "SS" FOR UC 2-1/2"	3
13	776067	SPRING, #CO480-042-1250-M	3
14	781147	WING SCREW, "SS" FOR 2-1/2"UC	3
14	781167	WING-SCREW, SS 6 & 12"UC	3