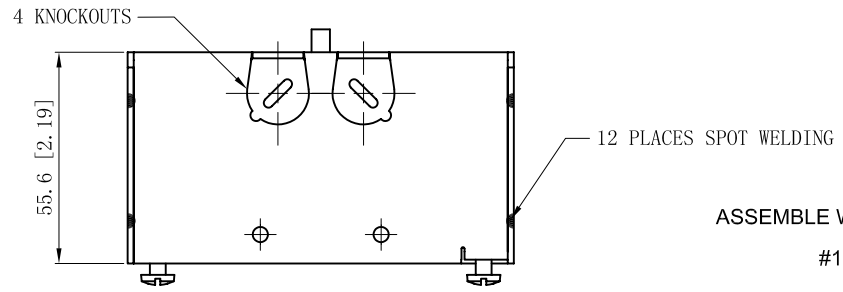


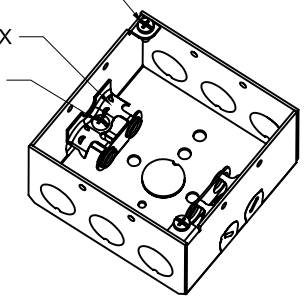
SIDES	BOTTOM
4 KNOCKOUTS	1/2" KNOCKOUTS
6 1/2" KNOCKOUTS	
2 PCS 8-32×1/2 Screws Installed	
2 PCS 10-32×1 Screws Installed	
Material:Steel-0.0625"-G60 Galvanized	



#8-32 UNC, ×2

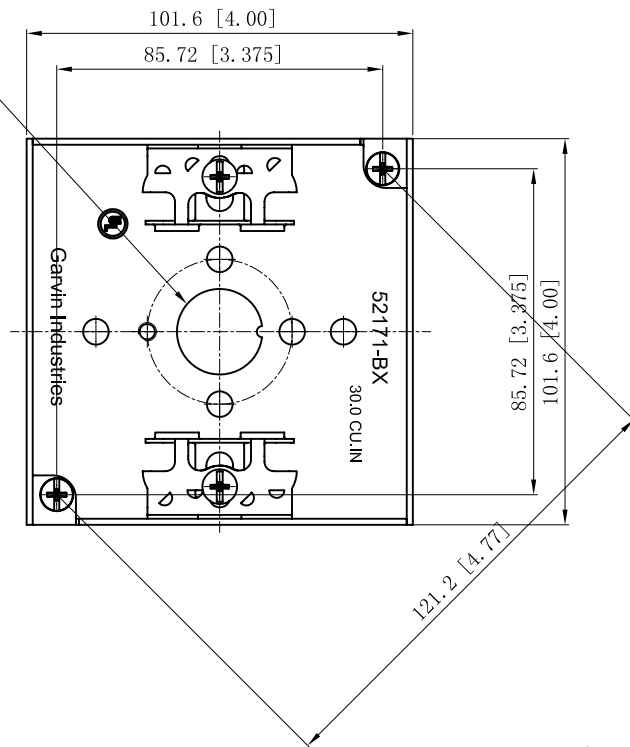
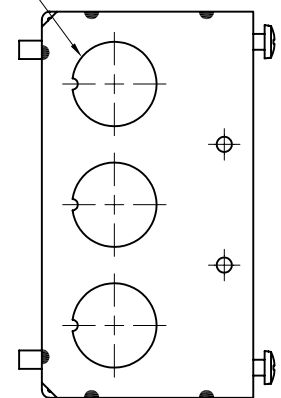
ASSEMBLE WITH THE BOX

#10-32 UNF, ×2



6 1/2" KNOCKOUTS $\phi=22.50$ [$\phi=0.886$]

1/2" KNOCKOUTS $\phi=22.50$ [$\phi=0.886$]



This data sheet is for reference only. GARVIN INDUSTRIES reserves the right to make changes to the design without prior notice.

DESCRIPTION
TRADE REFERENCE TERMS

STANDARD PACKING
25 PCS

TITLE		52171-BX		REV C
SIZE A4		DWG NO.		DATA SHEET