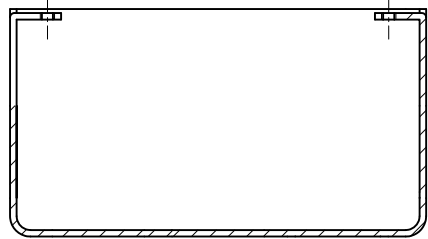
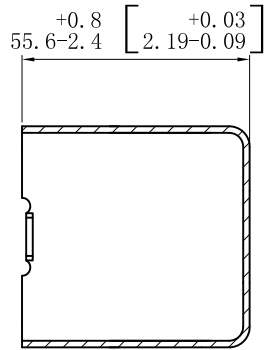
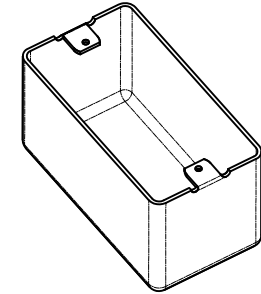


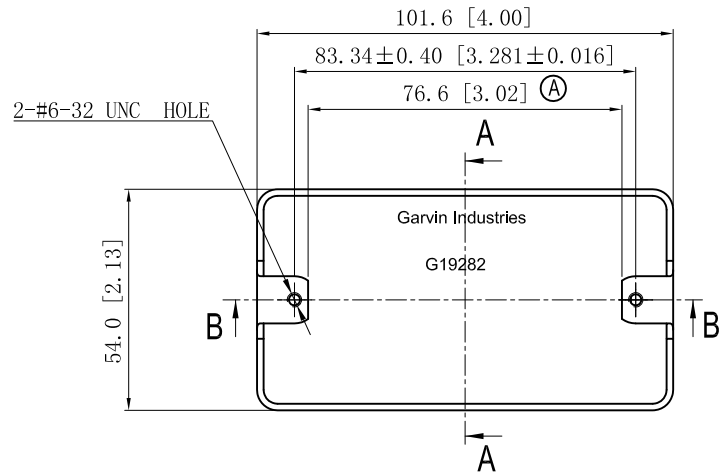
| | |
|--|--------|
| SIDES | BOTTOM |
| | |
| | |
| | |
| Material: 0.051~0.059"-Stainless steel 316 | |



CUTAWAY VIEW B-B



CUTAWAY VIEW A-A



This data sheet is for reference only .GARVIN INDUSTRIES reserves the right to make changes to the design without prior notice.

| |
|-----------------------|
| DESCRIPTION |
| |
| TRADE REFERENCE TERMS |
| |

| |
|------------------|
| STANDARD PACKING |
| 50 PCS |

| | | |
|--|--------------------------|----------|
| GARVIN INDUSTRIES | | |
| TITLE HANDY UTILITY BOXES & EXTENSION RINGS | | |
| SIZE A4 | DWG NO. G19282-BLNKSS | REV A |
| DATA SHEET | | |
| www.garvinindustries.com | | |