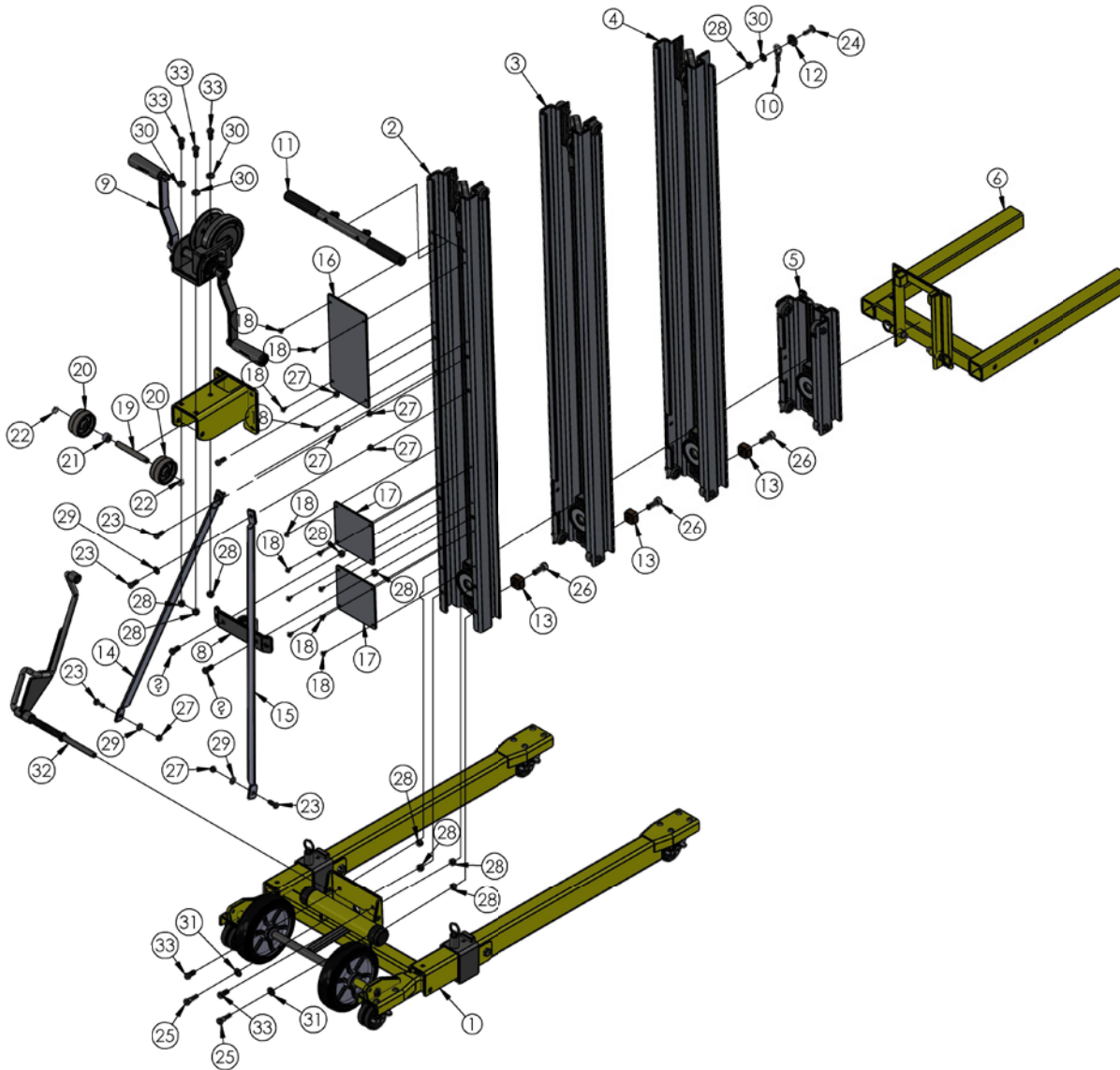
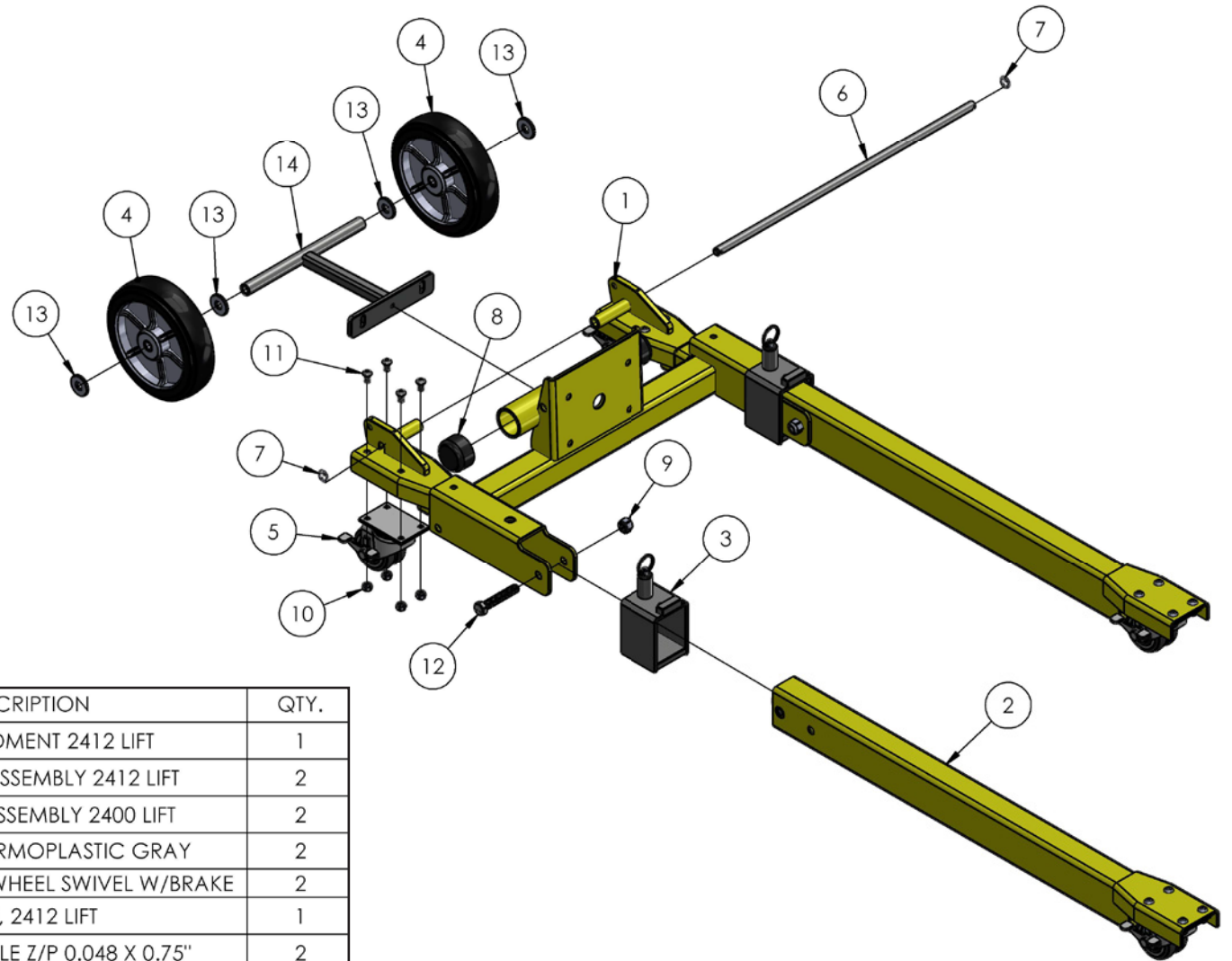


# 2412 SERIES LIFT ASSEMBLY



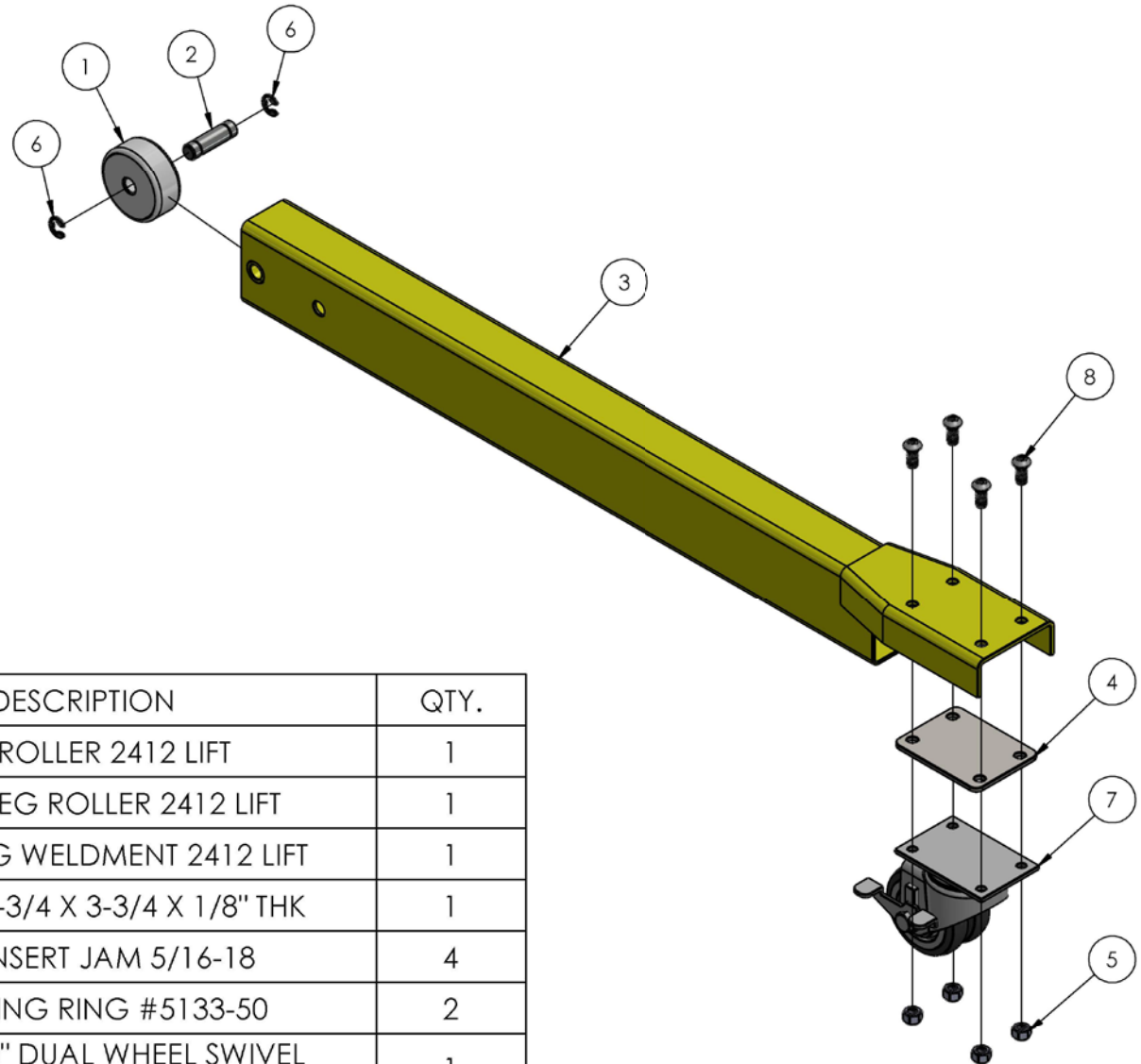
ITEM NO.	PART NUMBER	DESCRIPTION	QTY.
1	784715	BASE ASSEMBLY 2412 LIFT	1
2	784720	BOTTOM MAST ASSEMBLY 2412 LIFT	1
3	784730	CENTER MAST ASSEMBLY 2412 LIFT	1
4	784740	TOP MAST ASSEMBLY 2412 LIFT	1
5	784765	CARRIAGE ASSEMBLY 2412 LIFT	1
6	784770	FORK ASSEMBLY 2400 LIFT	1
7	784775	WINCH MOUNTING WELDMENT 2400	1
8	784784	SPREADER PLATE ASSEMBLY 2400	1
9	784785	WINCH ASSEMBLY, 2400 LIFT	1
10	784790	LOAD LINE 2412	1
11	784282	TOP HANDLE ASSEMBLY 2400	1
12	782910	ROPE RET. WASHER	1
13	783575	STOP BLOCK	3
14	784251	MAST BRACE (LEFT) 2200 LIFT	1
15	784252	MAST BRACE (RIGHT) 2200 LIFT	1
16	784748	MAST COVER ALUM -TOP 2400	1
17	784749	MAST COVER ALUM -BTM 2400	2
18	776055	SCREW, SM #8 X 3/4 SELF TAPPING	12
19	784778	SHAFT, WHEEL 2400 LIFT	1
20	779012	WHEEL, POLYOLEFIN 3"	2
21	784394	SPACER, PULLEY 1/2"	1
22	774053	COTTER, CIRCLE Z/P 0.048 X 0.75"	2
23	771052	SCREW, HHC 5/16-18 X 1 PLTD	6
24	771260	SCREW, FHSC 3/8-16 X 1.25"LN	1
25	771090	SCREW, HHC 3/8-16 X 1.5"	2
26	771261	SCREW, SHC 1/2-13 X 1-1/4	3
27	772502	NUT, INSERT JAM 5/16-18	6
28	772355	NUT, INSERT LOCK 3/8-16	10
29	773042	WASHER, FLAT 5/16	4
30	773022	WASHER, FLAT 3/8 SAE HARDENED	4
31	773040	WASHER, FLAT 3/8	2
32	784827	MAST HOLD DOWN, BAR TYPE 2400	1
33	771107	SCREW, HHC 3/8-16 X 1	7

# 2412 BASE ASSEMBLY



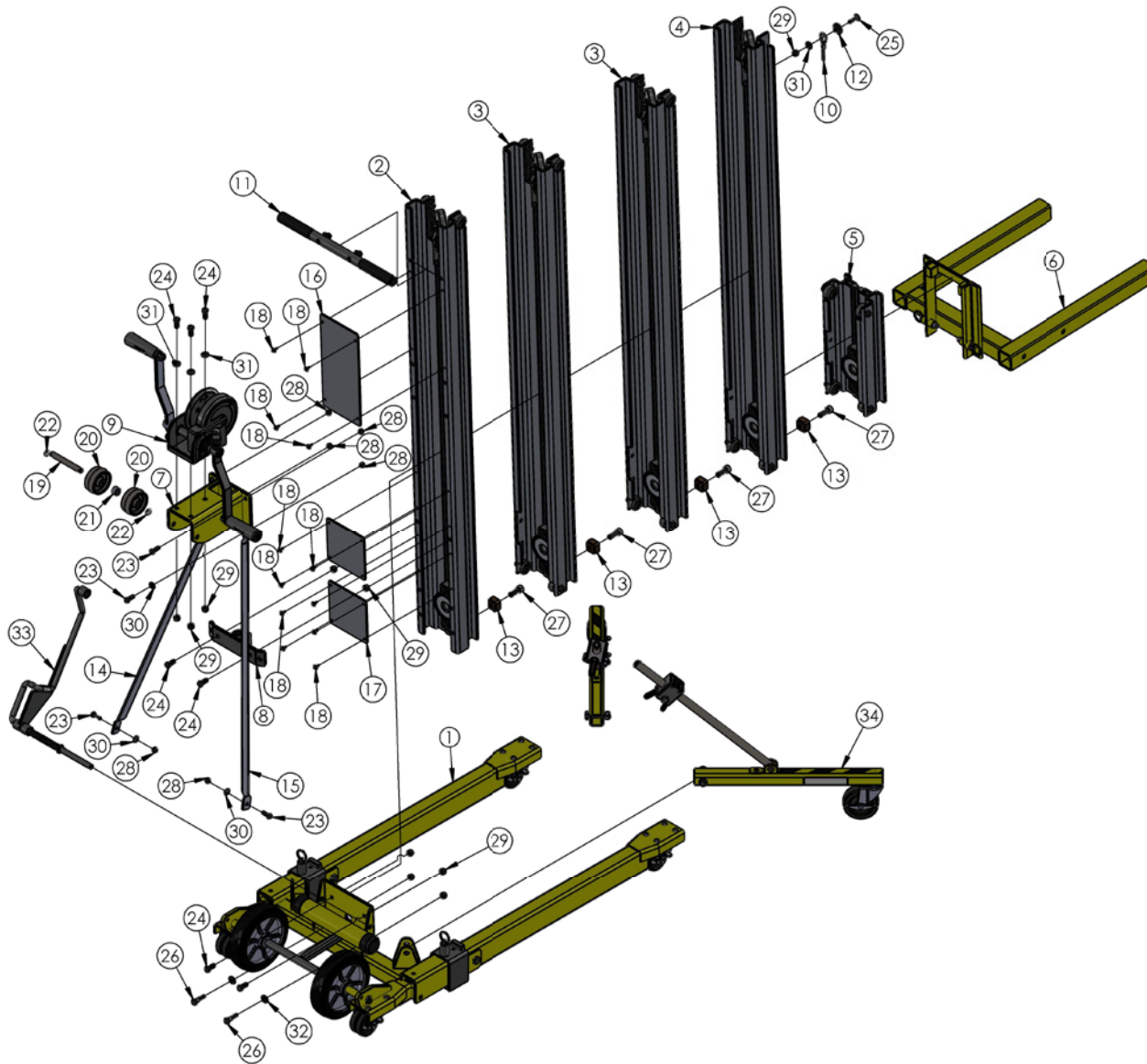
ITEM NO.	PART NUMBER	DESCRIPTION	QTY.
1	784800	BASE WELDMENT 2412 LIFT	1
2	784810	FRONT LEG ASSEMBLY 2412 LIFT	2
3	784820	LEG LOCK ASSEMBLY 2400 LIFT	2
4	779031	WHEEL, 8" THERMOPLASTIC GRAY	2
5	779036	CASTER, 3" DUAL WHEEL SWIVEL W/BRAKE	2
6	784585	AXLE, 2412 LIFT	1
7	774053	COTTER, CIRCLE Z/P 0.048 X 0.75"	2
8	779905	CAP, 2" OD TUBE, BLACK	2
9	772358	NUT, INSERT JAM 1/2 -13	2
10	772502	NUT, INSERT JAM 5/16-18	8
11	771049	SCREW, BHC 5/16-19 X .625"LN	8
12	771142	SCREW, HHC 1/2-13 X 3"	2
13	773060	WASHER, FLAT 1/2 USS	4
14	784907	AXLE SUPPORT REINFORCEMENT WELDMENT	1

# 2412 FRONT LEG ASSEMBLY



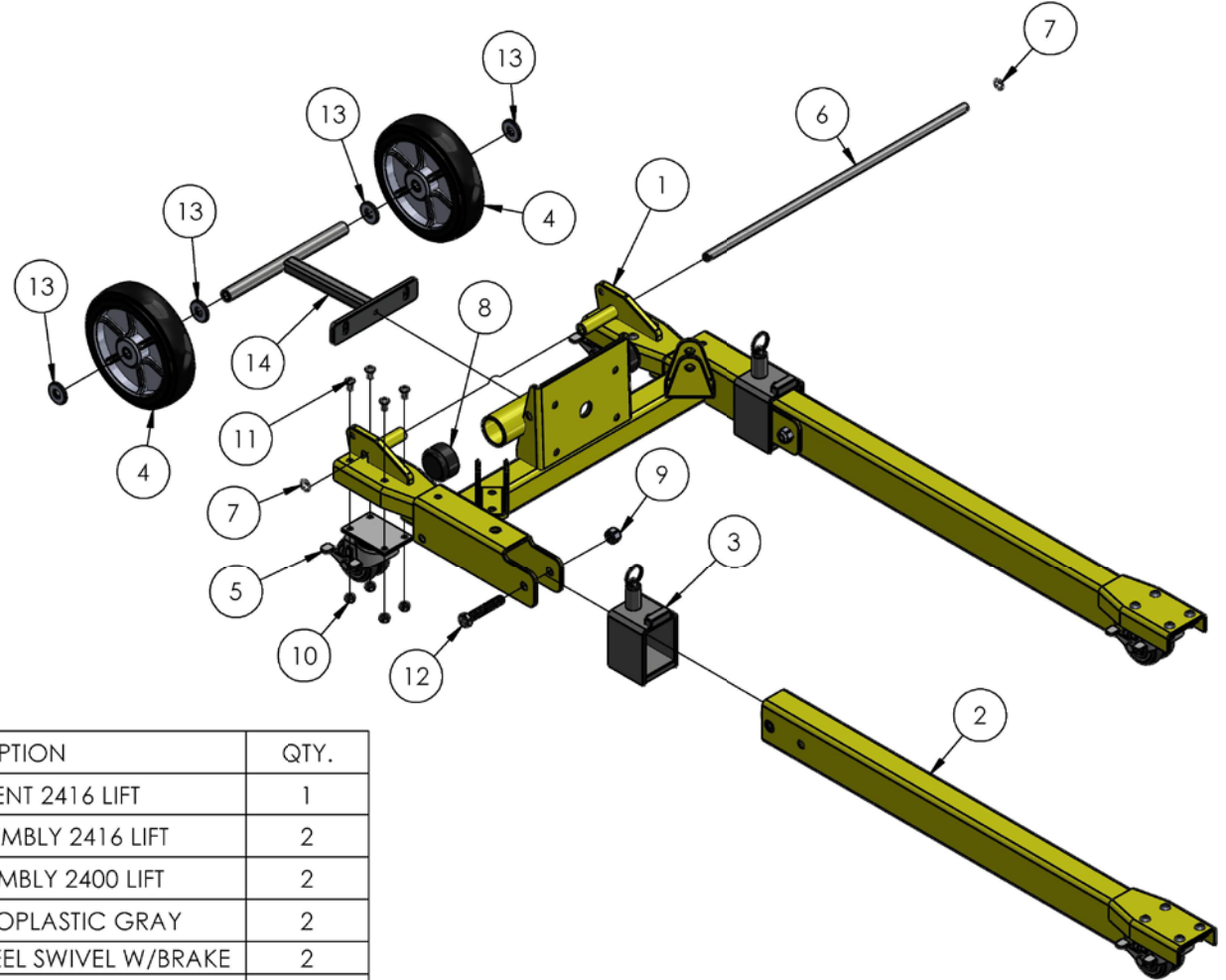
ITEM NO.	PART NUMBER	DESCRIPTION	QTY.
1	784811	LEG ROLLER 2412 LIFT	1
2	784812	SHAFT, LEG ROLLER 2412 LIFT	1
3	784815	FRONT LEG WELDMENT 2412 LIFT	1
4	773098	SPACER 2-3/4 X 3-3/4 X 1/8" THK	1
5	772502	NUT, INSERT JAM 5/16-18	4
6	776079	RETAINING RING #5133-50	2
7	779036	CASTER, 3" DUAL WHEEL SWIVEL W/BRAKE	1
8	771269	SCREW, BHC 5/16-18 X 0.75	4

# 2416 SERIES LIFT ASSEMBLY



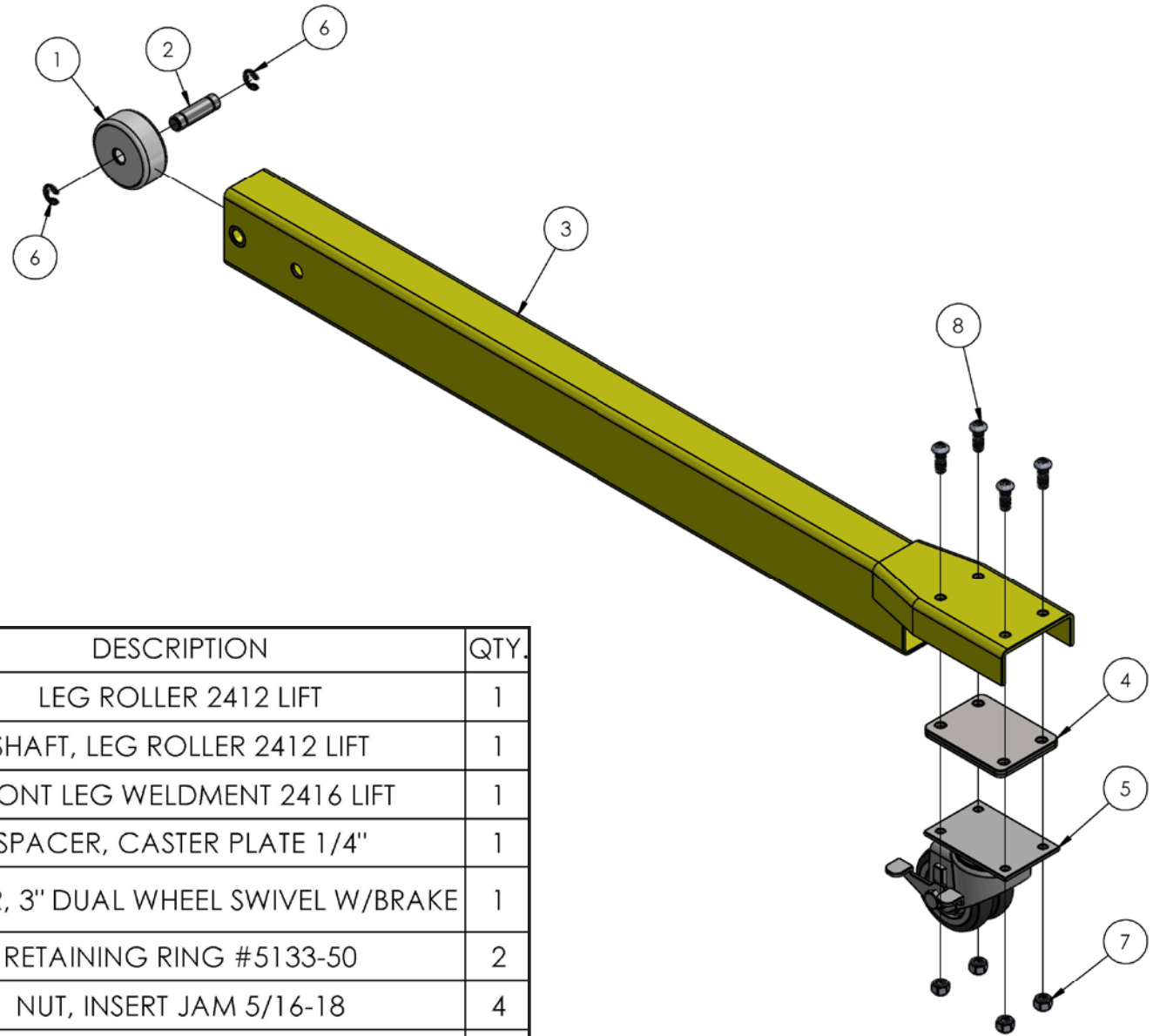
ITEM NO.	PART NUMBER	DESCRIPTION	QTY.
1	784717	BASE ASSEMBLY 2416 LIFT	1
2	784720	BOTTOM MAST ASSEMBLY 2412 LIFT	1
3	784730	CENTER MAST ASSEMBLY 2412 LIFT	2
4	784740	TOP MAST ASSEMBLY 2412 LIFT	1
5	784765	CARRIAGE ASSEMBLY 2412 LIFT	1
6	784770	FORK ASSEMBLY 2400 LIFT	1
7	784775	WINCH MOUNTING WELDMENT 2400	1
8	784784	SPREADER PLATE ASSEMBLY 2400	1
9	784785	WINCH ASSEMBLY, 2400 LIFT	1
10	784795	LOAD LINE EVENTER 16	1
11	784282	TOP HANDLE ASSEMBLY 2400	1
12	782910	ROPE RET. WASHER	1
13	783575	STOP BLOCK	4
14	784251	MAST BRACE (LEFT) 2200 LIFT	1
15	784252	MAST BRACE (RIGHT) 2200 LIFT	1
16	784748	MAST COVER ALUM -TOP 2400	1
17	784749	MAST COVER ALUM -BTM 2400	2
18	776055	SCREW, SM #8 X 3/4 SELF TAPPING	12
19	784778	SHAFT, WHEEL 2400 LIFT	1
20	779012	WHEEL, POLYOLEFIN 3"	2
21	784394	SPACER, PULLEY 1/2"	1
22	774053	COTTER, CIRCLE Z/P 0.048 X 0.75"	2
23	771052	SCREW, HHC 5/16-18 X 1 PLTD	6
24	771107	SCREW, FHSC 3/8-16 X 1	7
25	771260	SCREW, FHSC 3/8-16 X 1.25"LN	1
26	771090	SCREW, HHC 3/8-16 X 1.5"	2
27	771261	SCREW, SHC 1/2-13 X 1-1/4	4
28	772502	NUT, INSERT JAM 5/16-18	6
29	772355	NUT, INSERT LOCK 3/8-16	10
30	773042	WASHER, FLAT 5/16	4
31	773022	WASHER, FLAT 3/8 SAE HARDENED	4
32	773040	WASHER, FLAT 3/8	2
33	784827	MAST HOLD DOWN, BAR TYPE 2400	1
34	783936	OUTRIGGER ASSEMBLY 2416 LIFT	1

# 2416 BASE ASSEMBLY



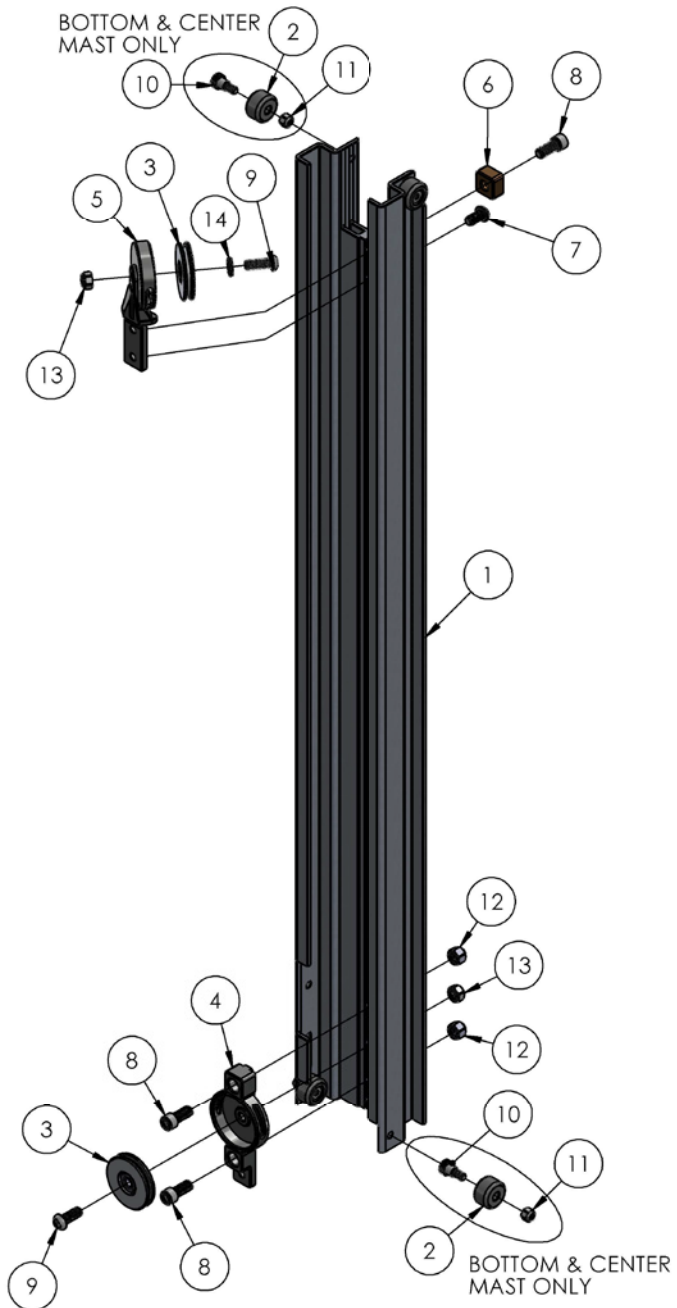
ITEM NO.	PART NUMBER	DESCRIPTION	QTY.
1	784799	BASE WELDMENT 2416 LIFT	1
2	784813	FRONT LEG ASSEMBLY 2416 LIFT	2
3	784820	LEG LOCK ASSEMBLY 2400 LIFT	2
4	779031	WHEEL, 8" THERMOPLASTIC GRAY	2
5	779036	CASTER, 3" DUAL WHEEL SWIVEL W/BRAKE	2
6	784585	AXLE, 2412 LIFT	1
7	774053	COTTER, CIRCLE Z/P 0.048 X 0.75"	2
8	779905	CAP, 2" OD TUBE, BLACK	2
9	772358	NUT, INSERT JAM 1/2 -13	2
10	772502	NUT, INSERT JAM 5/16-18	8
11	771049	SCREW, BHC 5/16-19 X .625"LN	8
12	771142	SCREW, HHC 1/2-13 X 3"	2
13	773060	WASHER, FLAT 1/2 USS	4
14	784907	AXLE SUPPORT REINFORCEMENT WELDMENT	1

# 2416 FRONT LEG ASSEMBLY



ITEM NO.	PART NUMBER	DESCRIPTION	QTY.
1	784811	LEG ROLLER 2412 LIFT	1
2	784812	SHAFT, LEG ROLLER 2412 LIFT	1
3	784818	FRONT LEG WELDMENT 2416 LIFT	1
4	784814	SPACER, CASTER PLATE 1/4"	1
5	779036	CASTER, 3" DUAL WHEEL SWIVEL W/BRAKE	1
6	776079	RETAINING RING #5133-50	2
7	772502	NUT, INSERT JAM 5/16-18	4
8	771239	SCREW, BHC 5/16-18 X 7/8"	4

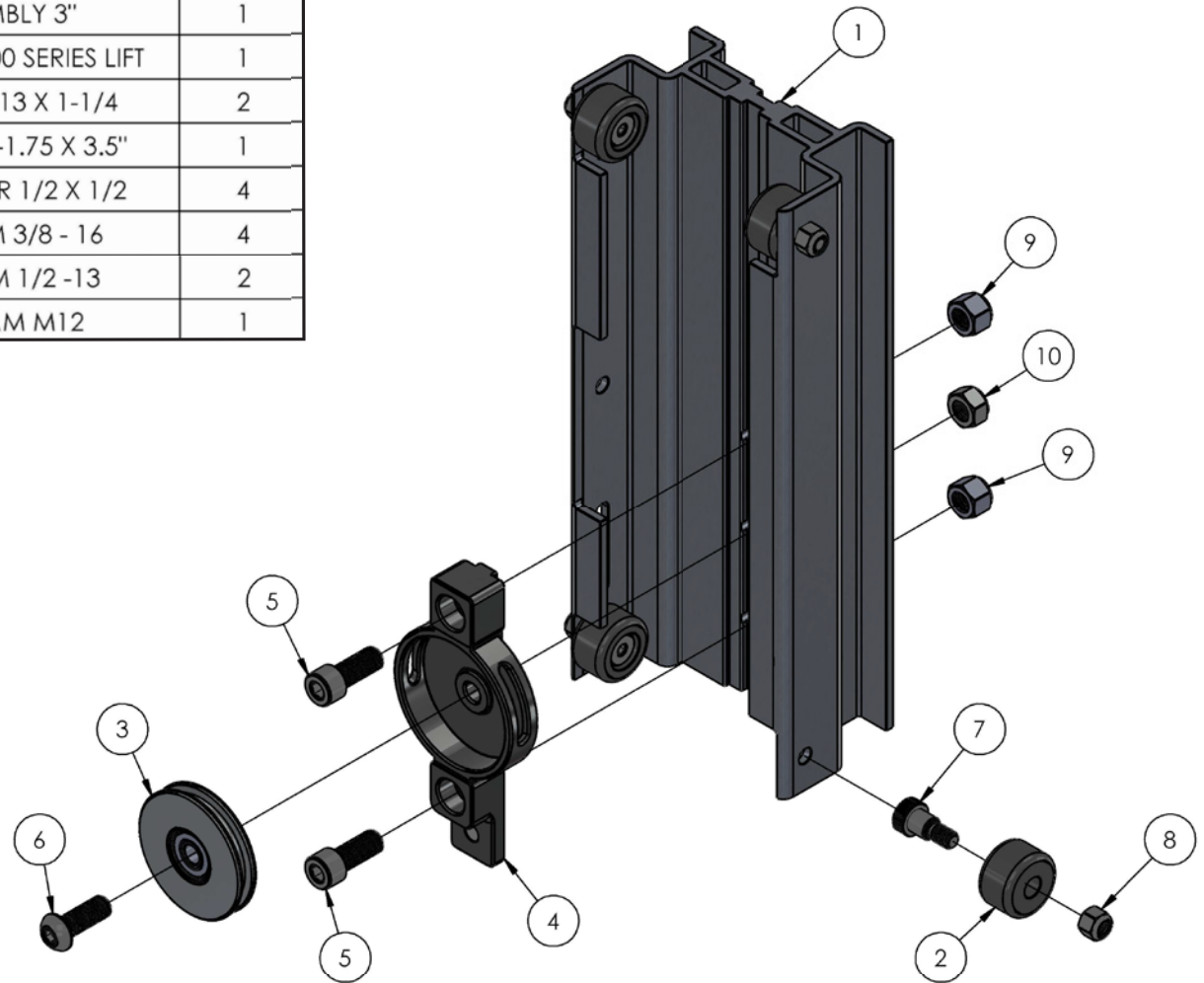
# MAST ASSEMBLY



ITEM NO.	PART NUMBER	DESCRIPTION	QTY.
1	784721	BOTTOM MAST MACHINED 2412 LIFT	1
1	784731	CENTER MAST MACHINED 2412 LIFT	1
1	784741	TOP MAST MACHINED 2412	1
2	784722	MAST ROLLER	4
2	784722	MAST ROLLER (TOP& BOTTOM) QTY 2	*
2	784722	MAST ROLLER (CENTER) QTY 4	*
3	784724	PULLEY ASSEMBLY 3"	2
4	784705	PULLEY COVER, 2400 SERIES LIFT	1
5	784710	PULLEY MOUNT, 2400 SERIES LIFT	1
6	783575	STOP BLOCK	1
7	771259	SCREW, BHSC 1/2-13 X 1.0"LN	1
8	771261	SCREW, SHC 1/2-13 X 1-1/4	3
9	771263	SCREW, BHC M12-1.75 X 3.5"	2
10	771350	SCREW, SHOULDER 1/2 X 1/2	4
11	772350	NUT, INSERT JAM 3/8 - 16	4
12	772358	NUT, INSERT JAM 1/2 - 13	2
13	772505	NUT, INSERT JAM M12	2
14	773096	WASHER, FLAT M12	2

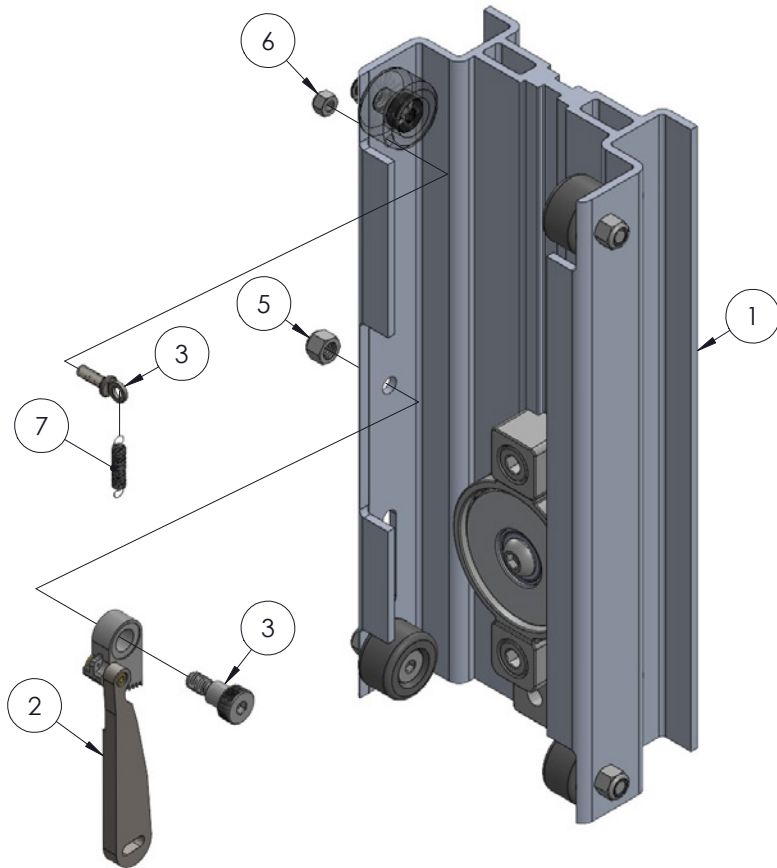
# CARRIAGE ASSEMBLY

ITEM NO.	PART NUMBER	DESCRIPTION	QTY.
1	784766	CARRIAGE MACHINED 2400 LIFT	1
2	784722	MAST ROLLER	4
3	784724	PULLEY ASSEMBLY 3"	1
4	784705	PULLEY COVER, 2400 SERIES LIFT	1
5	771261	SCREW, SHC 1/2-13 X 1-1/4	2
6	771263	SCREW, BHC M12-1.75 X 3.5"	1
7	771350	SCREW, SHOULDER 1/2 X 1/2	4
8	772350	NUT, INSERT JAM 3/8 - 16	4
9	772358	NUT, INSERT JAM 1/2 -13	2
10	772505	NUT, INSERT JAM M12	1

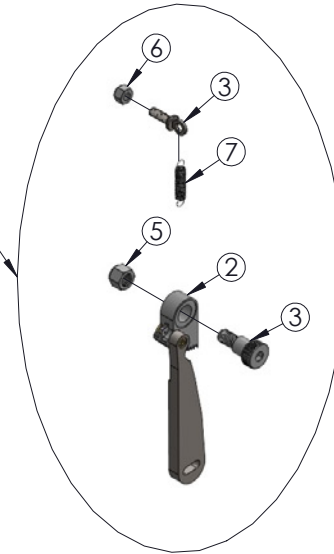




# BRAKE KIT ASSEMBLY (784755)

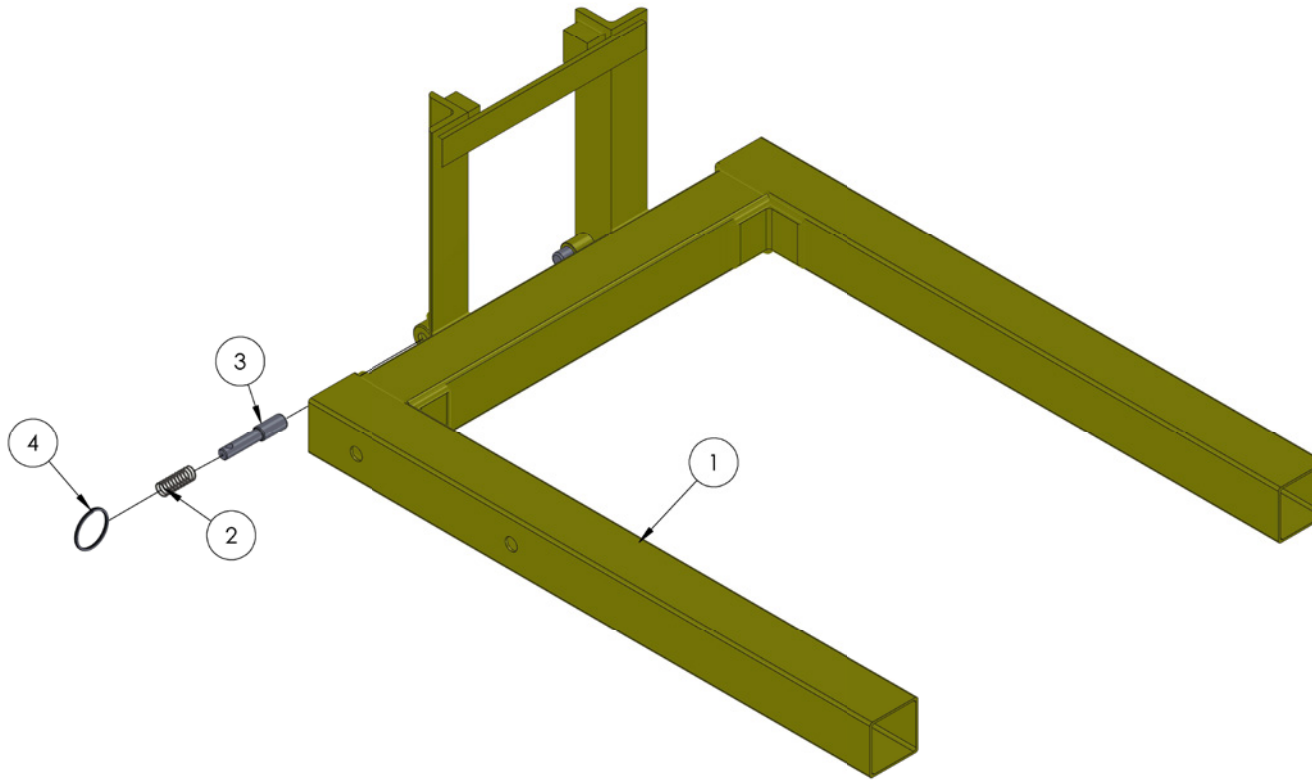


2400/EVENTER 16  
BRAKE KIT  
PN: 784755



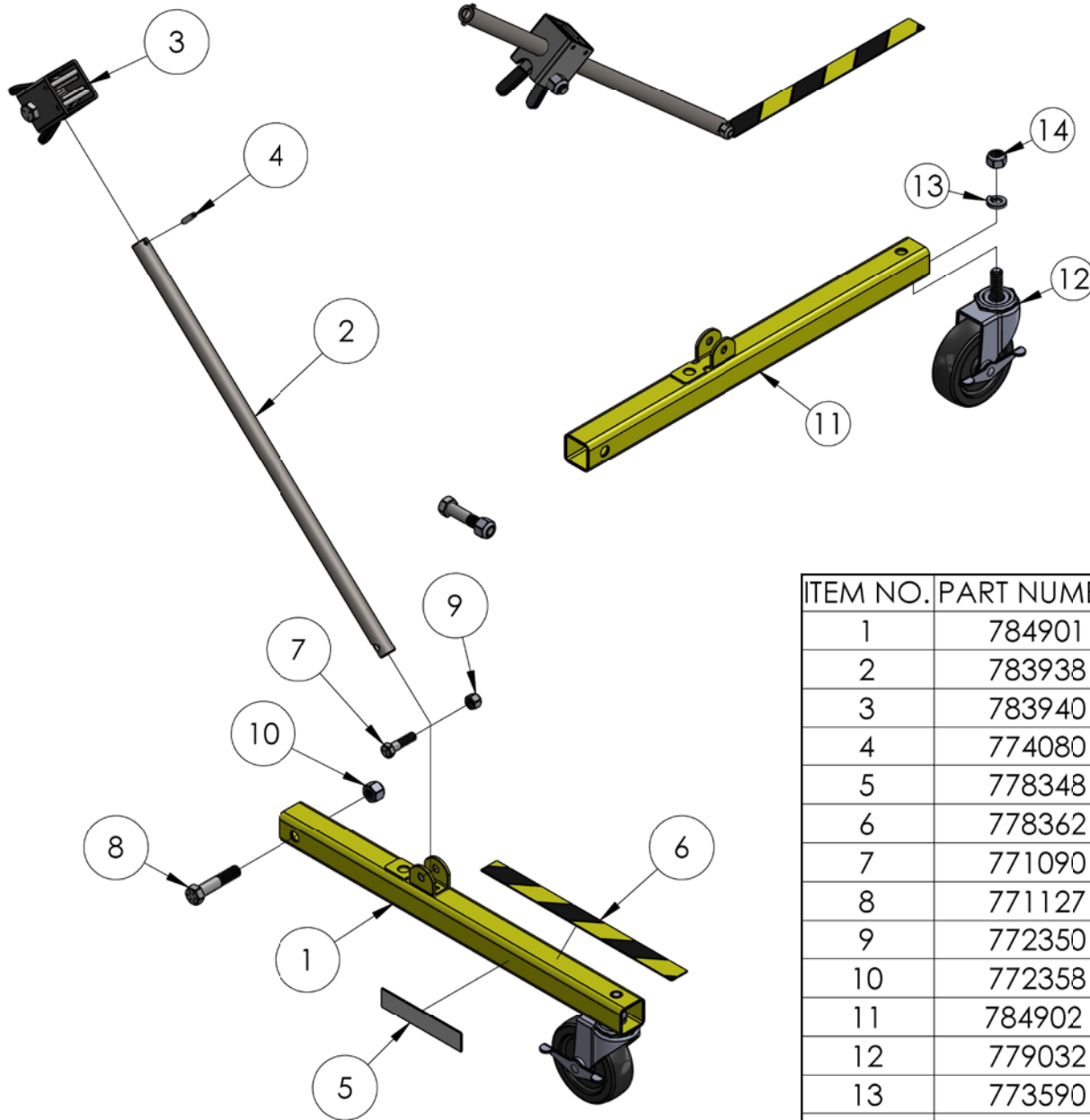
ITEM NO.	PART NUMBER	DESCRIPTION	QTY.
1	784765	CARRAGE ASSEMBLY <b>(NOT INCLUDED)</b>	1
2	784692	MAST BRAKE ASSEMBLY	1
3	771350	SCREW, SHOULDER 1/2 X 1/2	1
4	779900	SCREW, ADJUSTING (OHIO ES2112) EYE BOLT	1
5	772350	NUT, INSERT JAM 3/8 - 16	1
6	772076	NUT, INSERT LOCK 1/4-20	1
7	783530	BRAKE SPRING	1

# FORK ASSEMBLY



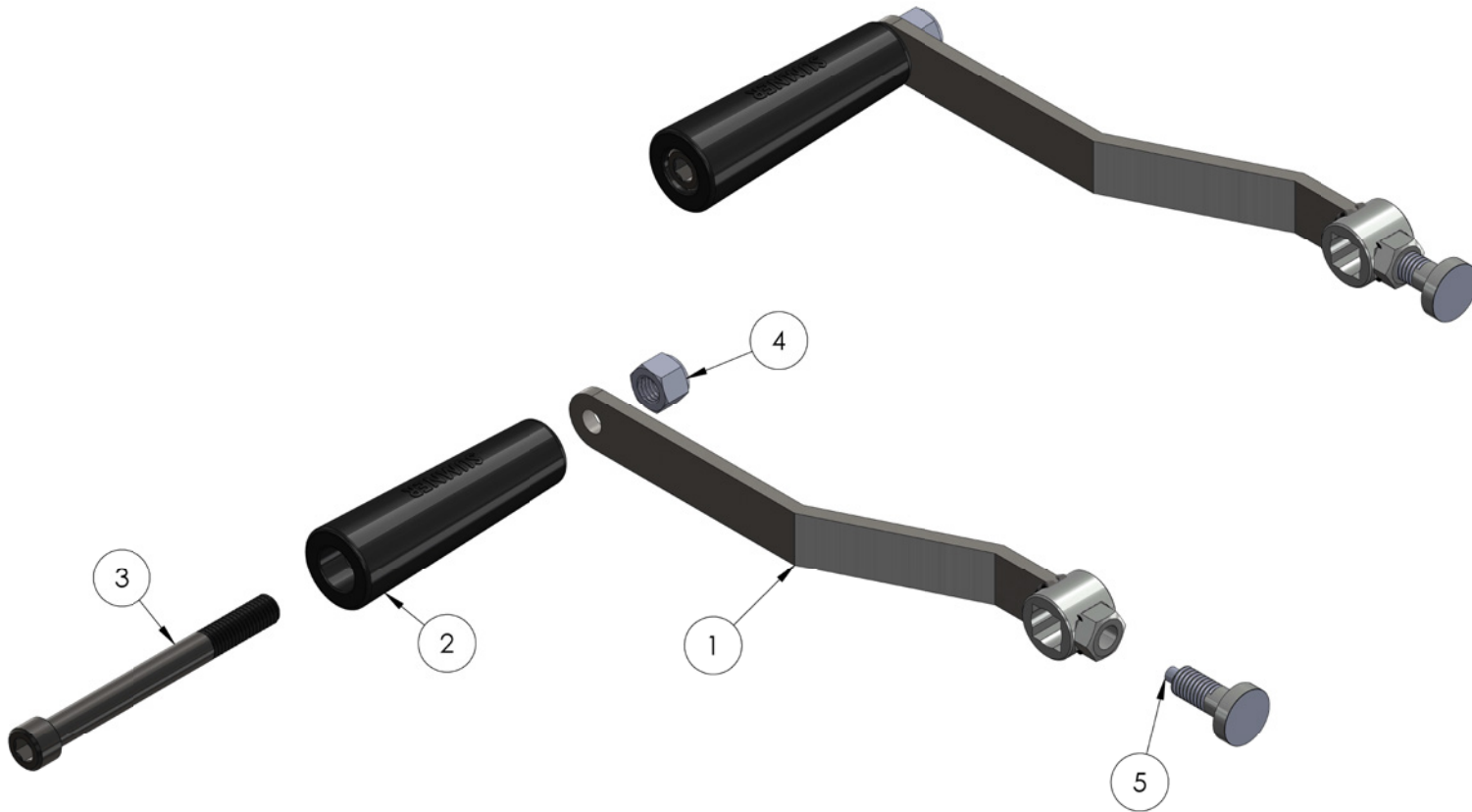
ITEM NO.	PART NUMBER	DESCRIPTION	QTY.
1	784771	FORK WELDMENT 2400 LIFT	1
2	776212	SPRING, #DWC - 042 - G - 9	2
3	782510	PLUNGER	2
4	775110	SPLIT RING 1-1/4" NICKLE PLATED	2

# OUTRIGGER ASSEMBLY



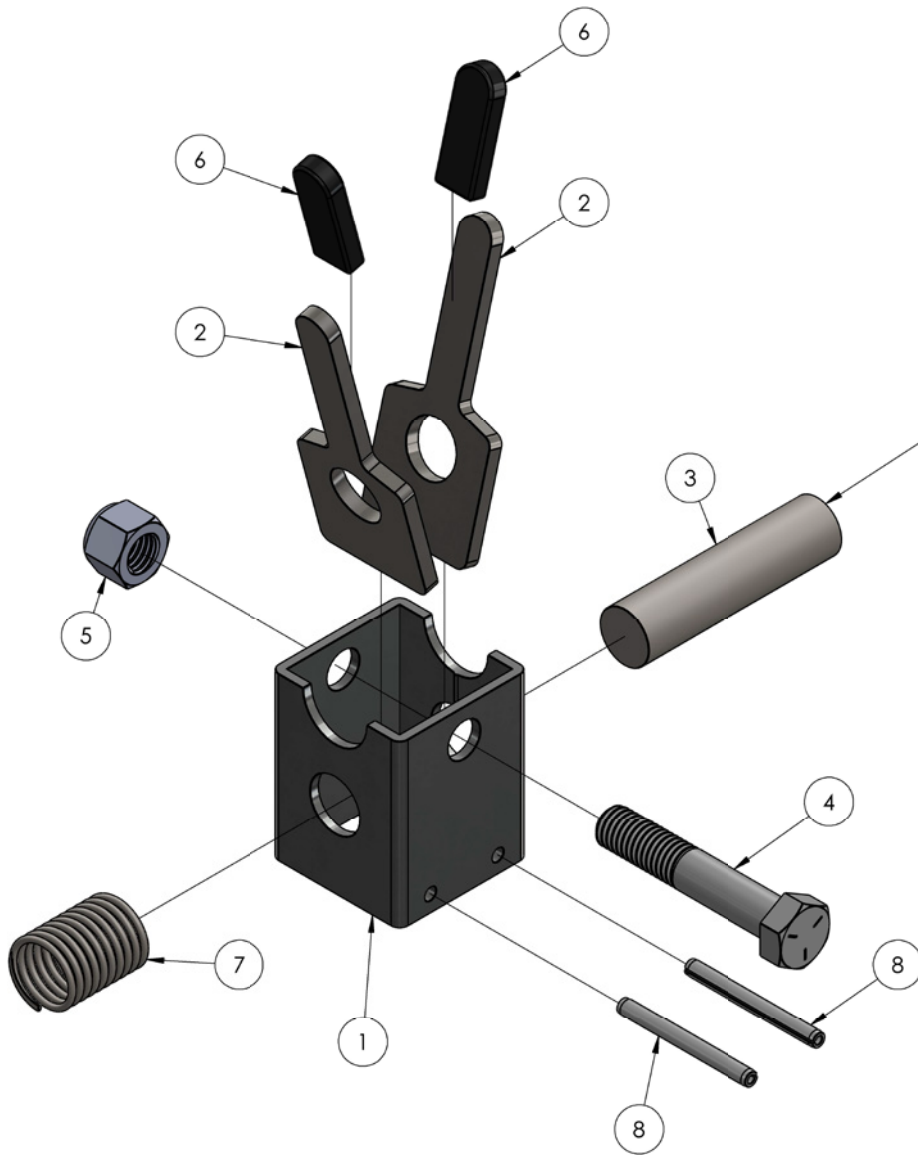
ITEM NO.	PART NUMBER	DESCRIPTION	QTY.
1	784901	LEG ASSEMBLY, OUTRIGGER 2416	2
2	783938	OUTRIGGER SUPPORT TUBE, 2500	2
3	783940	OUTRIGGER LOCK ASSEMBLY	2
4	774080	PIN ROLL 3/16 X 1.0" LN	2
5	778348	LABEL, LOWER STABILIZER LEG	2
6	778362	TAPE, 2" B/Y CAUTION STRIP	2
7	771090	SCREW, HHC 3/8-16 X 1.5"	2
8	771127	SCREW, HHC 1/2-13 X 2.5" GRD 5	2
9	772350	NUT, INSERT JAM 3/8 - 16	2
10	772358	NUT, INSERT JAM 1/2 -13	2
11	784902	LEG WELDMENT, OUTRIGGER 2416	1
12	779032	CASTER	1
13	773590	WASHER, LOCK 1/2"	1
14	772100	NUT, HEX 1/2-13 PLATED	1

# WINCH HANDLE ASSEMBLY



ITEM NO.	PART NUMBER	DESCRIPTION	QTY.
1	783756	WINCH HANDLE WELDMENT	1
2	780182	WINCH HANDLE SLEEVE	1
3	771254	SCREW, SHC 1/2 -13 X 5"LN	1
4	772358	NUT, INSERT JAM 1/2 -13	1
5	774180	SPRING PLUNGER, M 1/4 DIA.	1

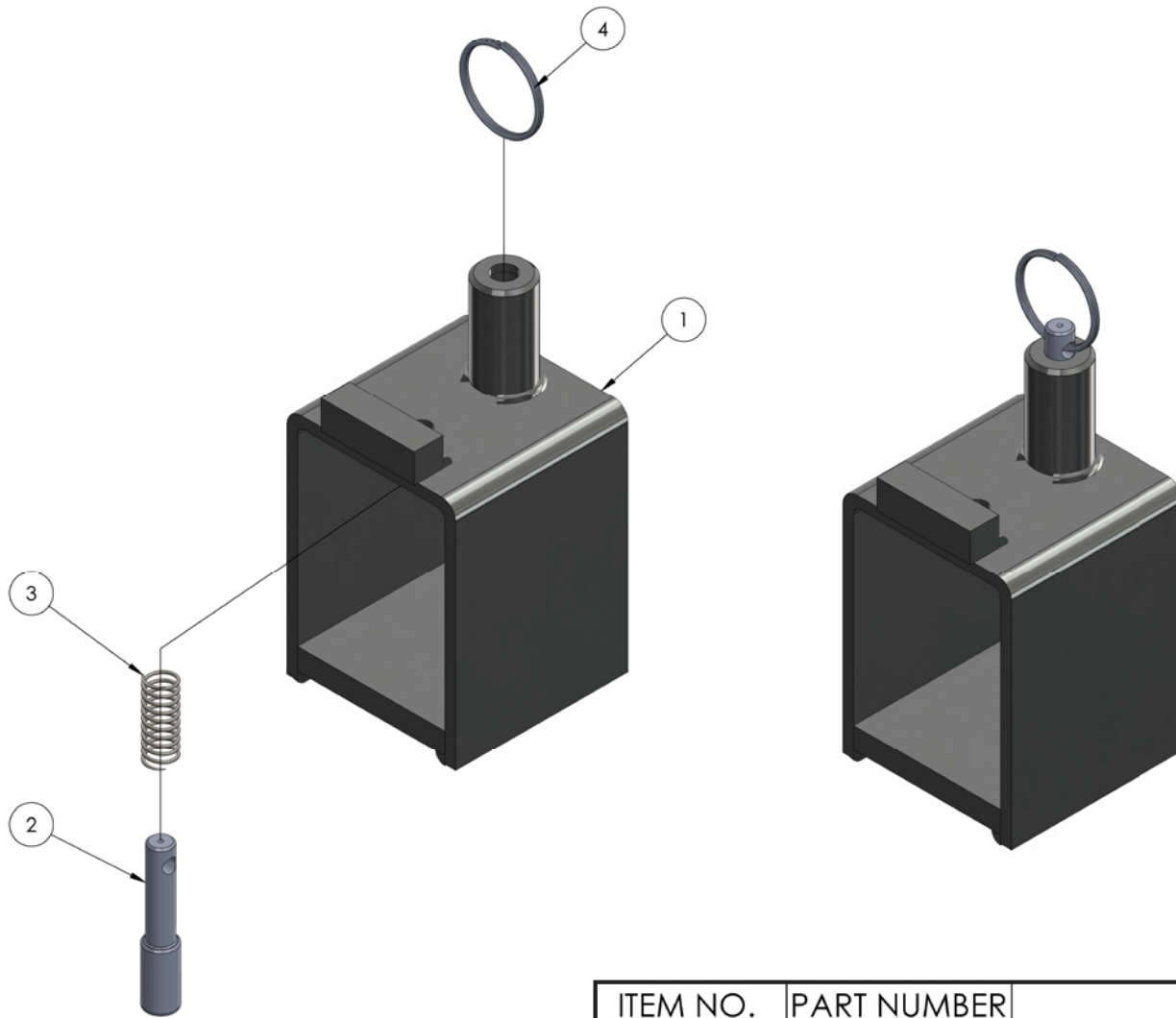
# OUTRIGGER LOCK ASSEMBLY



OUTRIGGER SUPPORT TUBE STUB LOCKS ASSEMBLY IS INSTALLED TO SUPPORT THE ASSEMBLY DURING SHIPMENT AND IS TO BE DISCARDED BEFORE INSTALLATION.

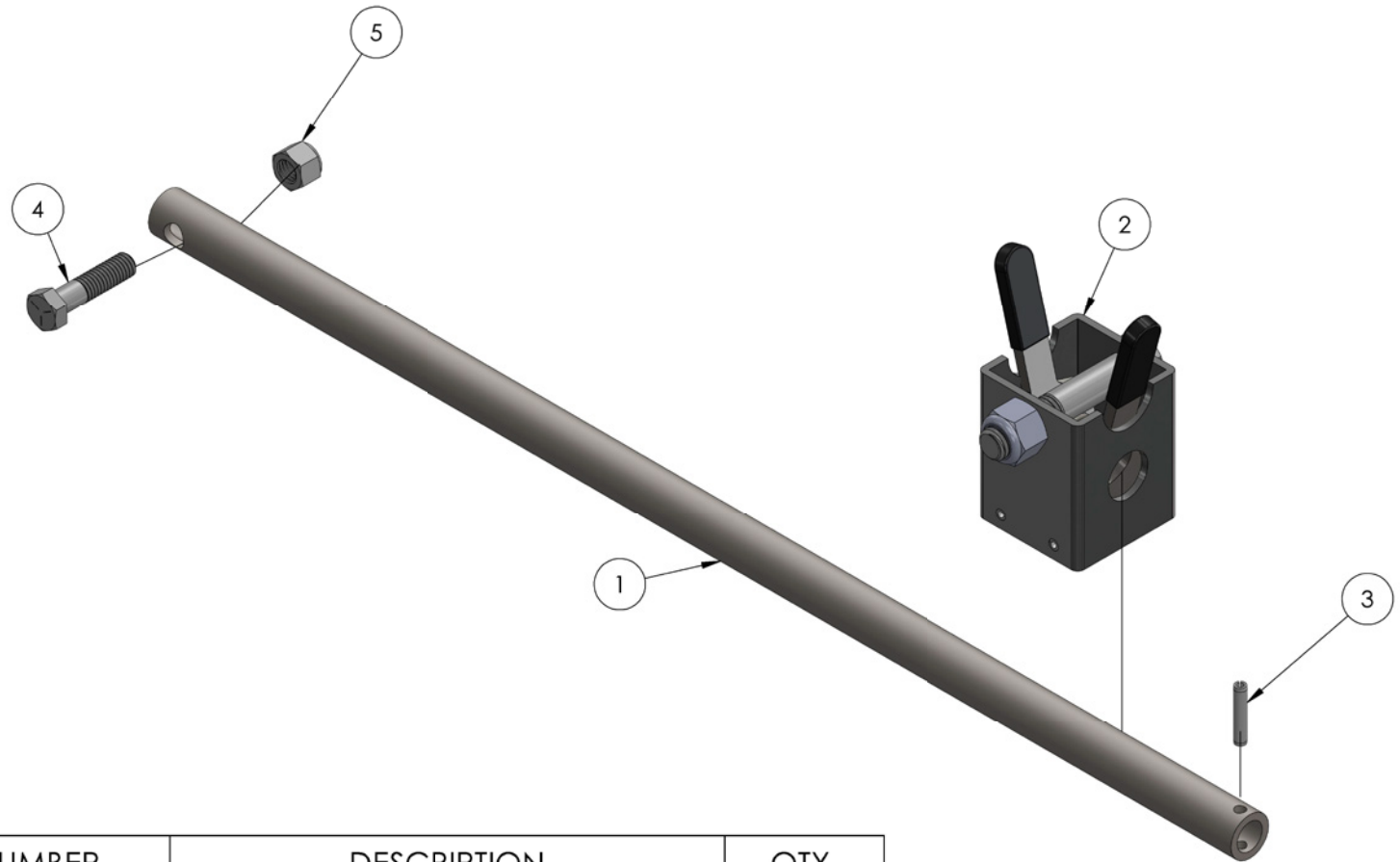
ITEM NO.	PART NUMBER	DESCRIPTION	QTY.
1	783941	OUTRIGGER LOCK TUBE	1
2	783942	OUTRIGGER LOCK FINGER	2
3	783944	OUTRIGGER SUPPORT TUBE STUB	1
4	771141	SCREW, HHC 1/2-13X2.75" LN	1
5	772358	NUT, INSERT JAM 1/2 -13	1
6	779938	CAP, RECT RD END 3/16X0.5X2.0"	2
7	776221	CENTURY SPRING #2952	1
8	774084	PIN, SPRING 3/16X2.0"	2

# LEG LOCK ASSEMBLY



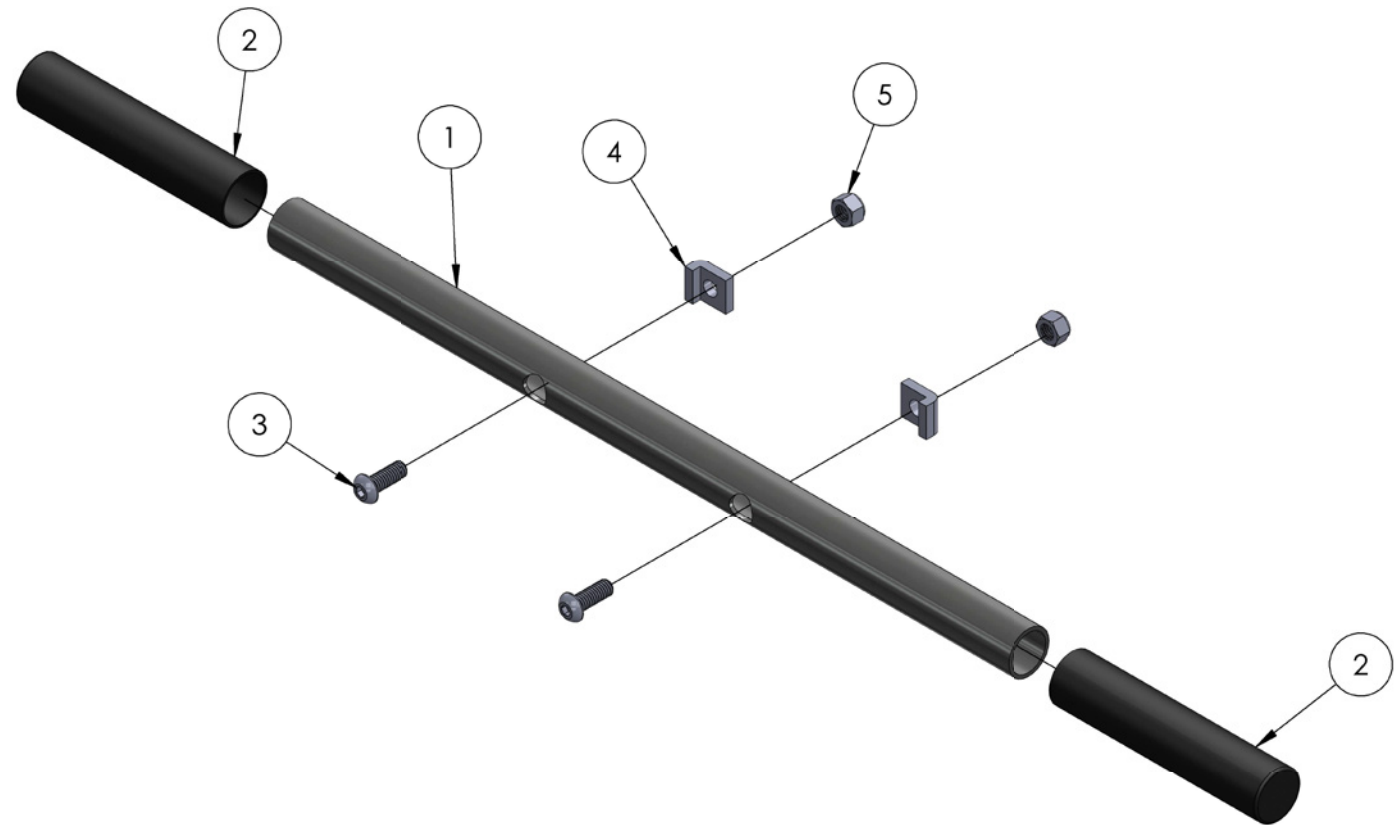
ITEM NO.	PART NUMBER	DESCRIPTION	QTY.
1	784821	LEG LOCK WELDMENT 2400 LIFT	1
2	782510	PLUNGER	1
3	776212	SPRING, #DWC - 042 - G - 9	1
4	775110	SPLIT RING 1-1/4" NICKLE PLATED	1

# OUTRIGGER LOCK KIT ASSEMBLY



ITEM NO.	PART NUMBER	DESCRIPTION	QTY.
1	783938	OUTRIGGER SUPPORT TUBE, 2500	1
2	783940	OUTRIGGER LOCK ASSEMBLY	1
3	774080	PIN ROLL 3/16 X 1.0" LN	1
4	771090	SCREW, HHC 3/8-16 X 1.5"	1
5	772350	NUT, INSERT JAM 3/8 - 16	1

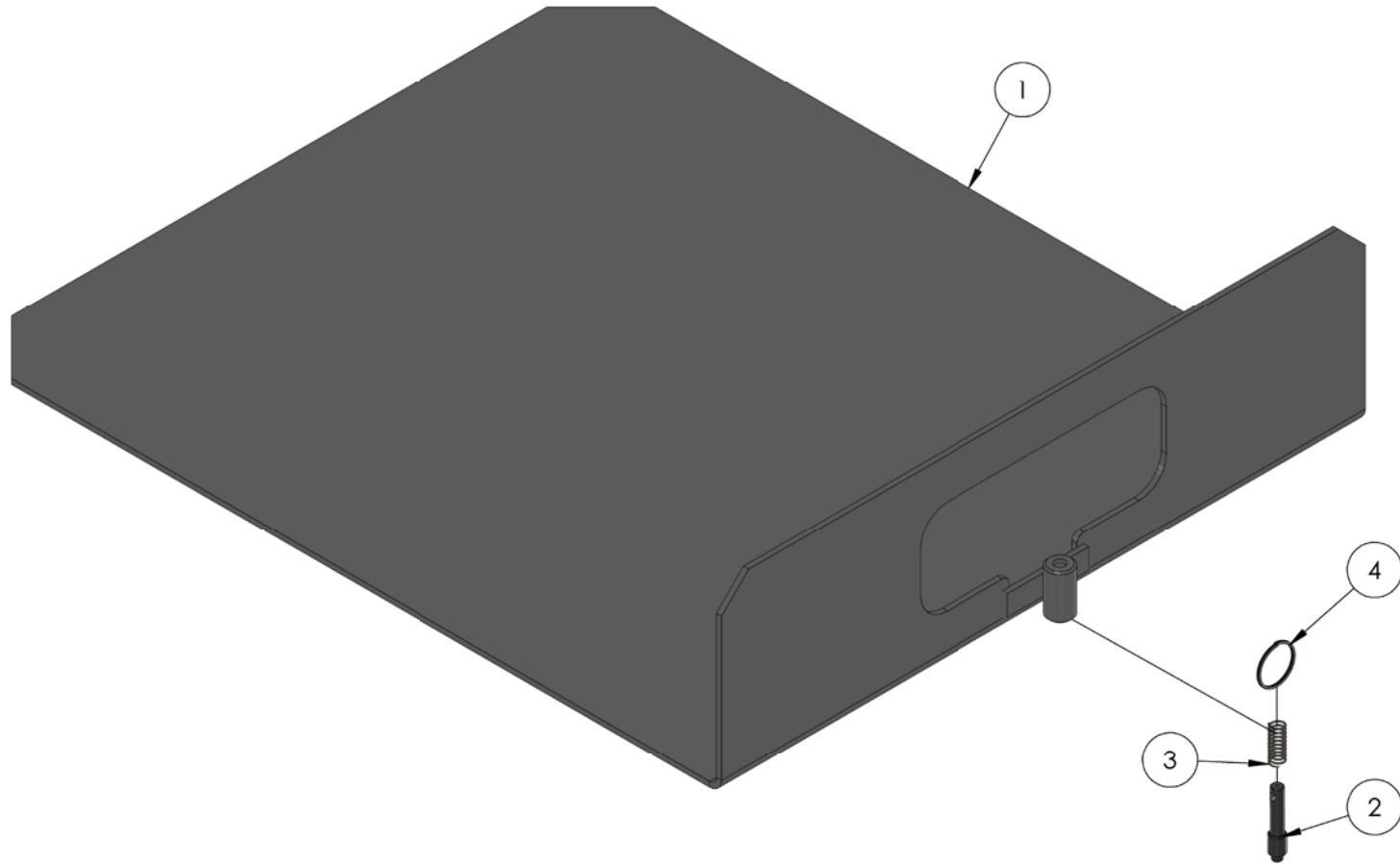
# TOP HANDLE ASSEMBLY



ITEM NO.	PART NUMBER	DESCRIPTION	QTY.
1	784280	TOP HANDLE, 2200 LIFT	1
2	779527	HAND GRIP 1" X 5"LN	2
3	771239	SCREW, BHC 5/16-18 X 7/8	2
4	773120	CLAMP, 5/16	2
5	772502	NUT, INSERT JAM 5/16-18	2

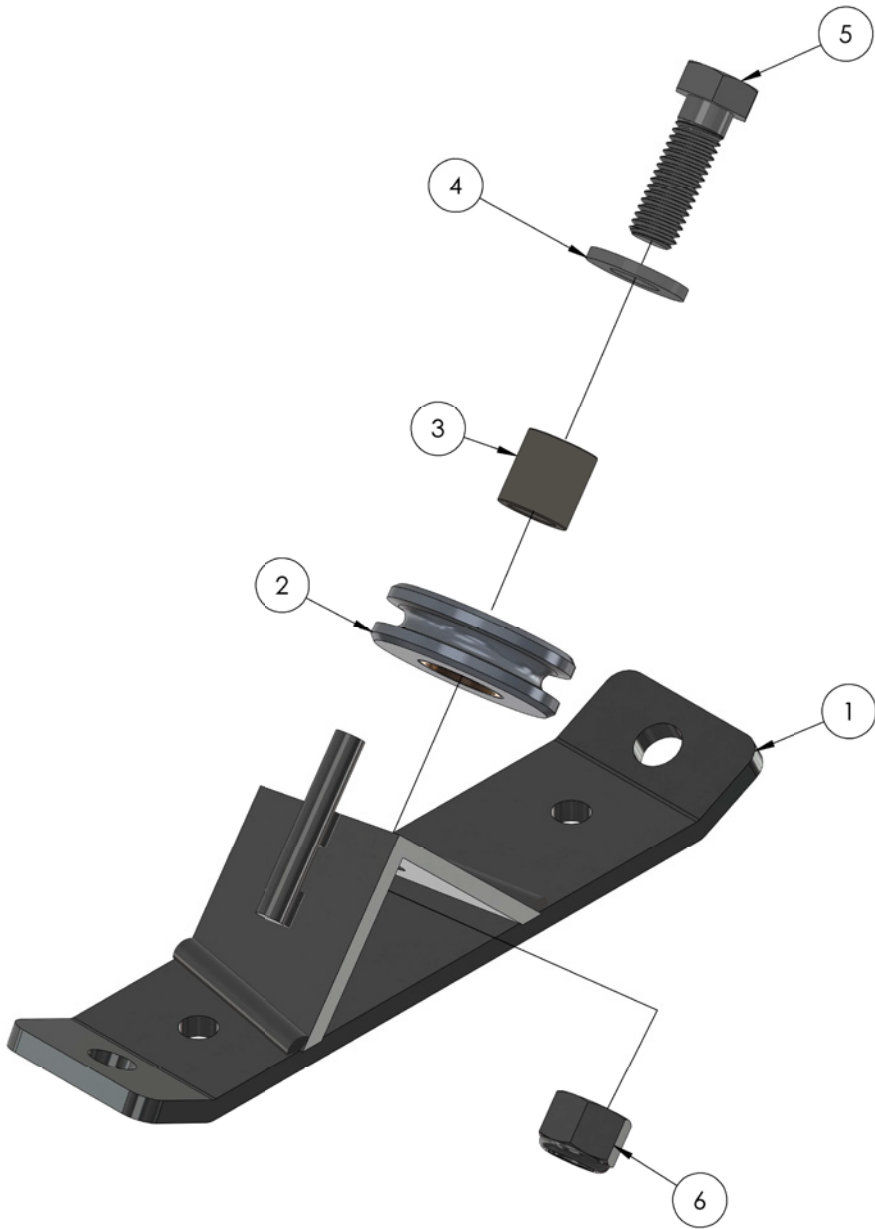


# TRAY ASSEMBLY



ITEM NO.	PART NUMBER	DESCRIPTION	QTY.
1	784321	TRAY WELDMENT 2412 LIFT	1
2	783342	PLUNGER	1
3	776212	SPRING, #DWC - 042 - G - 9	1
4	775110	SPLIT RING 1-1/4" NICKLE PLATED	1

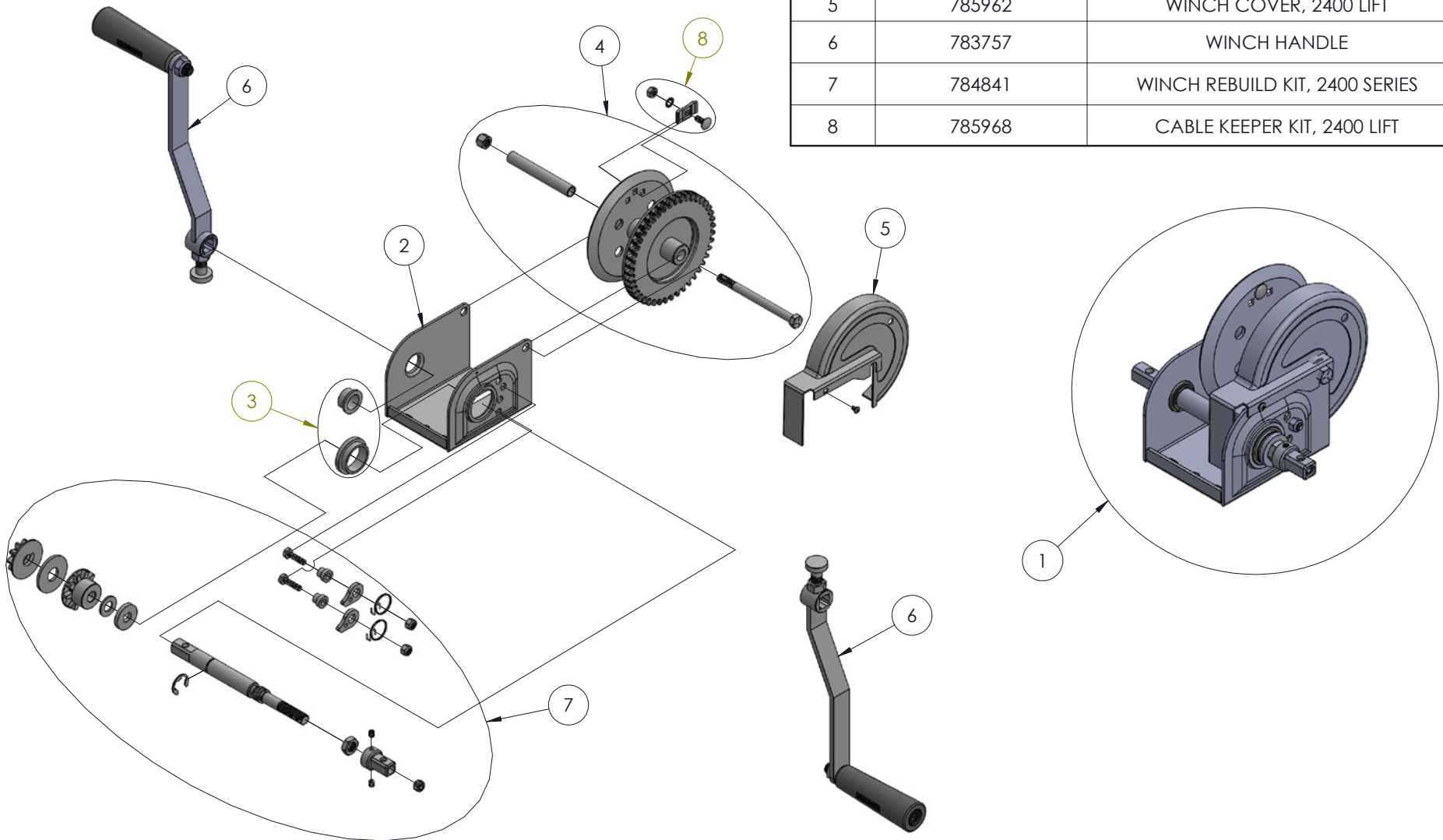
# SPREADER PLATE ASSEMBLY



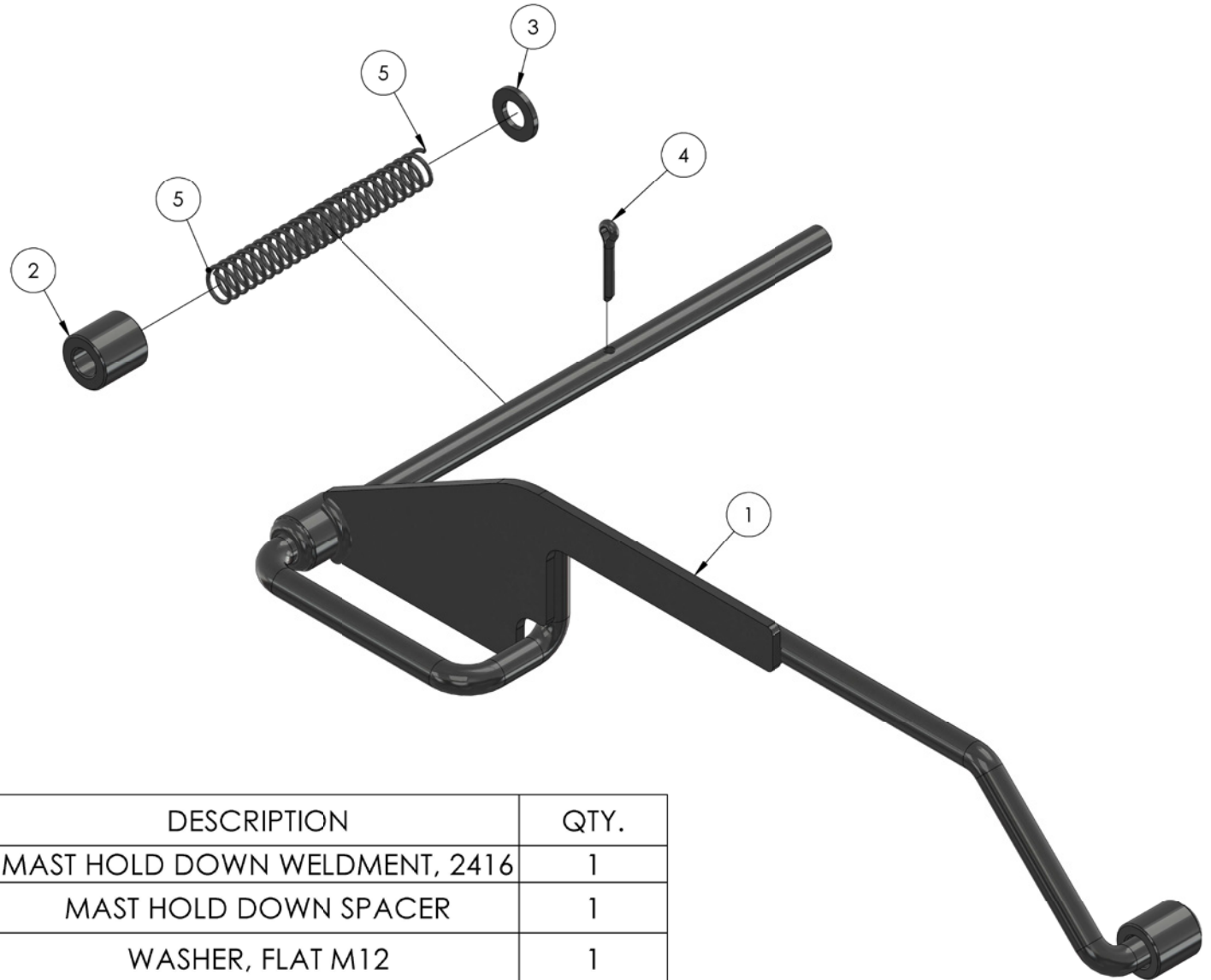
ITEM NO.	PART NUMBER	DESCRIPTION	QTY.
1	784788	SPREADER PLATE WELDMENT	1
2	780297	SHEAVE, EQUALIZING 2" R-SERIES	1
3	782960	ROLLER SHAFT	1
4	773094	WASHER, FLAT 1/2 SAE	1
5	771120	SCREW, HHC 1/2-13 x 1.5" LN	1
6	772358	NUT, INSERT JAM 1/2 -13	1

# WINCH ASSEMBLY

ITEM NO.	PART NUMBER	DESCRIPTION	QTY.
1	784785	WINCH ASSEMBLY NEW, 2400 LIFT W/O HANDLE	1
2	2400 WINCH HOUSING	<b>NOT FOR SALE</b>	1
3	785958	WINCH HOUSING BEARINGS, 2400 LIFT	1
4	785960	WINCH DRUM W/SHAFT, 2400 LIFT	1
5	785962	WINCH COVER, 2400 LIFT	1
6	783757	WINCH HANDLE	2
7	784841	WINCH REBUILD KIT, 2400 SERIES	1
8	785968	CABLE KEEPER KIT, 2400 LIFT	1

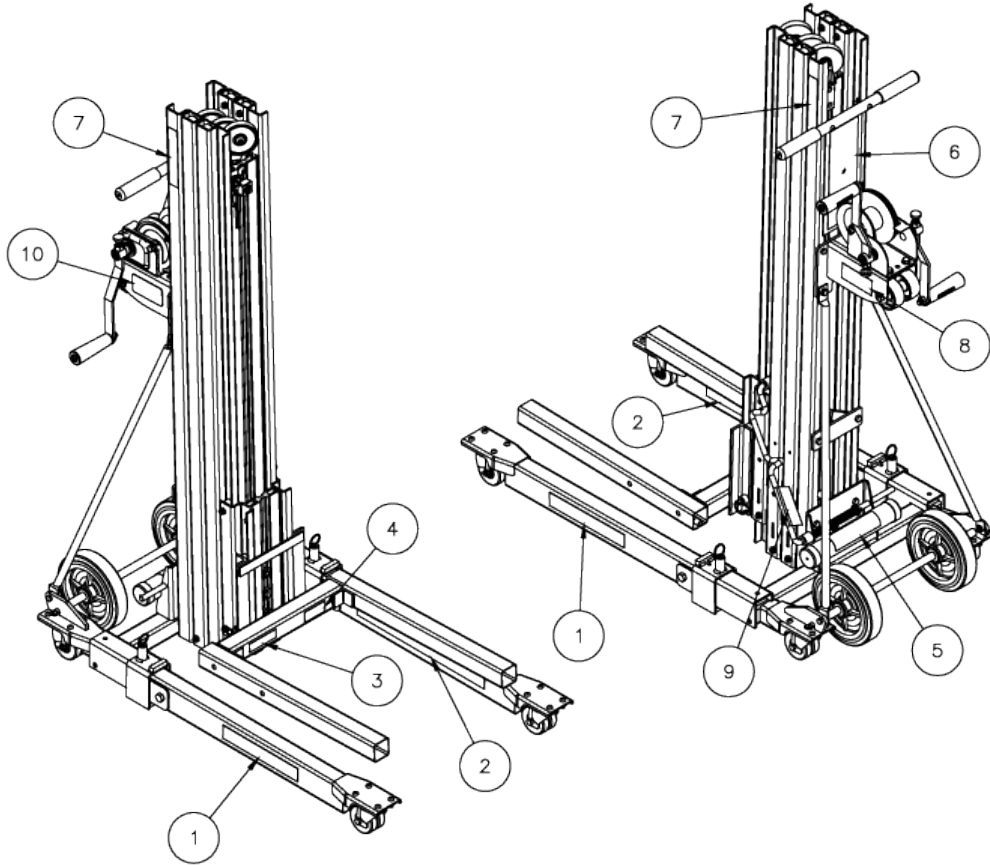


# MAST HOLD ASSEMBLY



ITEM NO.	PART NUMBER	DESCRIPTION	QTY.
1	784828	MAST HOLD DOWN WELDMENT, 2416	1
2	783045	MAST HOLD DOWN SPACER	1
3	773096	WASHER, FLAT M12	1
4	774051	PIN, COTTER 0.125 X 0.75"	1
5	776216	SPRING, CENTURY #71912S	2

# SERIES 2400 LIFT LABEL KIT



Item	Part No.	Description	Qty
1	778450	LABEL, LABEL SUMNER 2200 LIFT	2
2	778457	LABEL, "DO NOT STAND UNDER LOAD"	2
3	778339	LABEL, CARRIAGE LATCH WARNING	1
4	778347	LABEL, NO RIDERS WARNING	1
5	778906	LABEL, OP MANUAL - LIFT, READ B4	1
6	778458	LABEL, LARGE WARNING 2200 LIFT	1
7	778445	LABEL, MODEL 2412	2
7	778475	LABEL, MODEL 2416	2
8		LABEL SERIAL # 2412 (NOT AVAILABLE)	1
9	778461	LABEL, MAST HOLD DOWN BAR TYPE	1
10	778346	LABEL, WINCH RAISE/LOWER	1