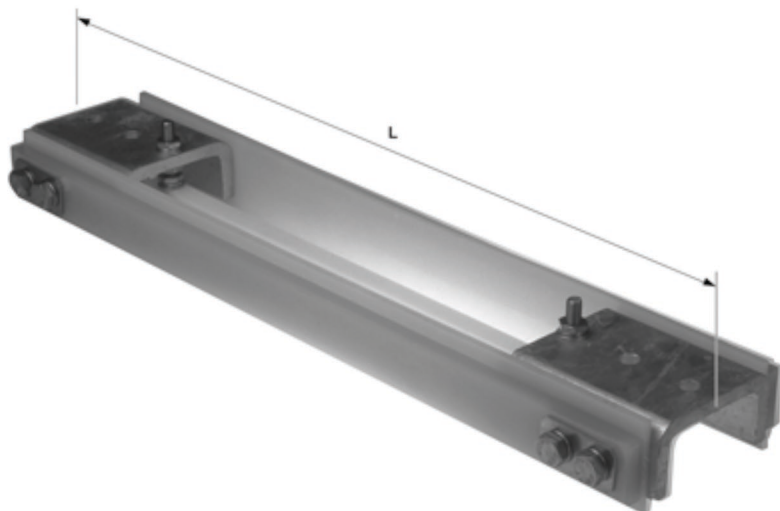


Section insulator ETB 1200 V for cut-in switches and crossings, L = 610 mm (for rigid, U 88, U 99)

Part no. B0933-02



Technical data

Dimensions

L: 610 mm

Material and weight

Weight: 5.500 kg

Loads and tightening torque

Breaking load: 39.6 kN

Standards applied

-

Function

-

Specifications

Operating voltage: 1200 V DC

Spare parts

-

Accessories

-

Comments

Spare material

- Insulation rod L= 335 mm for section insulator ETB 1200 V (for B0933-01 and -02), part no. D1501-02 (for B0933-01)
- Insulation rod L= 435 mm for section insulator ETB 1200 V (for B0933-01 and -02), part no. D1501-01 (for B0933-02)
- Insulation rod L= 400 mm for section insulator ETB 1200 V, part no. 301520 (for B1207-01)



Southwire™



A COLAS RAIL COMPANY

Contact Us: Transit@southwire.com