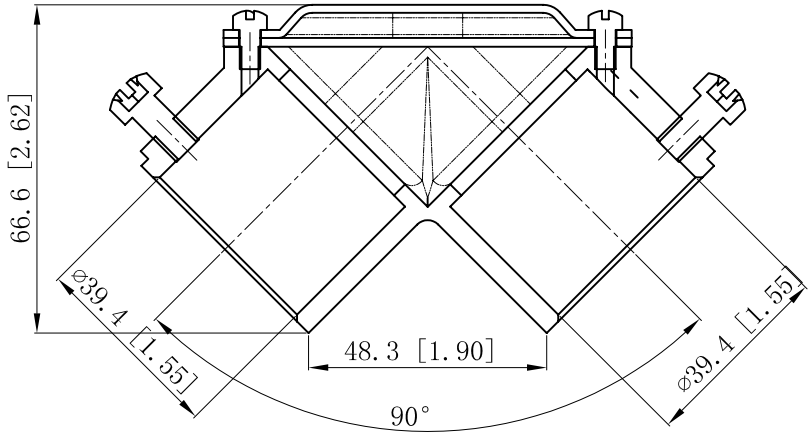
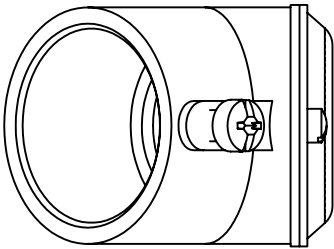
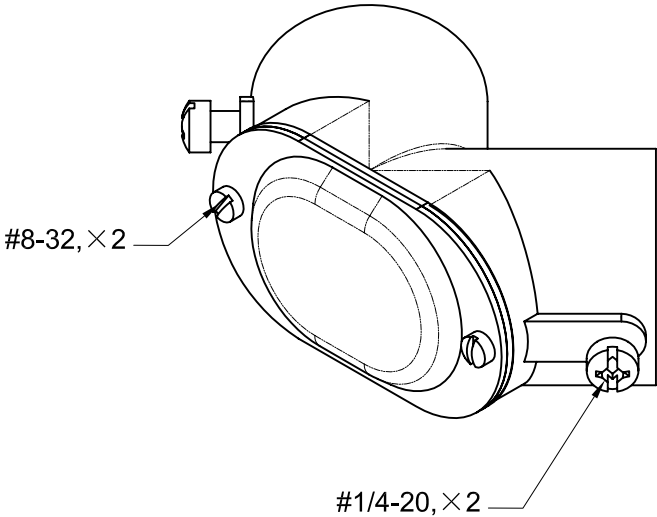
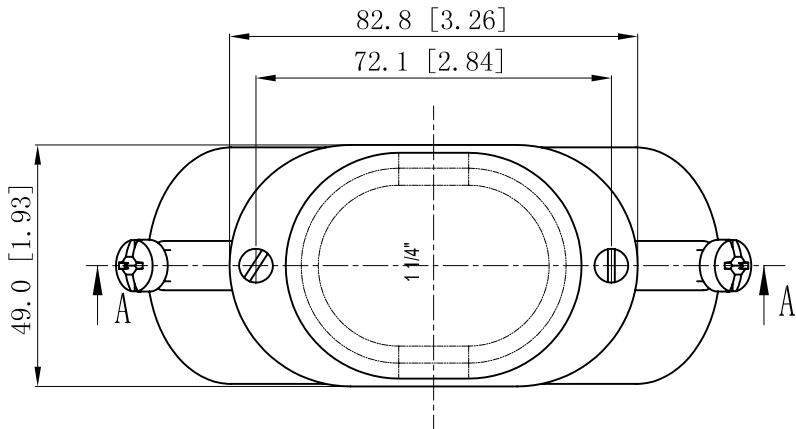


SIDES	BOTTOM
Material: #3 ZAMAK	
2 Pcs #8-32×5/16 screw install	
2 Pcs #1/4-20×1/2 screw install	



CUTAWAY VIEW A-A



DESCRIPTION
TRADE REFERENCE TERMS

This data sheet is for reference only .GARVIN INDUSTRIES reserves the right to make changes to the design without prior notice.

STANDARD PACKING	GARVIN INDUSTRIES		
5 PCS	TITLE RED PULL EIBOWS, 90°		
	SIZE A4	DWG NO. PESS-125	REV
	DATA SHEET		