

Report of Test

LLIA001617-007

Integrating Sphere Report

Catalog Number: LPT54W-850-E39-G4 Low Setting (36W)

Mogul-base retrofit lamp mounted VBU, formed plastic housing, formed aluminum heatsinks, clear plastic enclosures. 238 white LEDs, 8 CLW08E-54WC-14C2B-2835-A0 LED boards with 28 LEDs each and one CLW08E-54WD-14C1B-2835-A1 LED board with 14 LEDs

One internal LED driver



Performance Summary

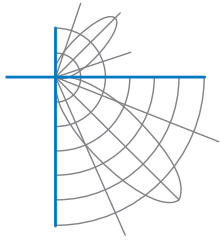
Voltage	120.0 Vac
Current	0.3269 A
Power	38.28 W
Frequency	59.99 Hz
Power Factor	0.976
Current THD	14.3 %
Total Luminous Flux	6372.3 lm
Efficacy	166.5 lm/W
Chromaticity (x,y)	(0.3423, 0.3536)
(u',v')	(0.2088, 0.4852)
Duv	0.0021
CCT	5113 K
CRI (Ra)	82
R9	3
TM-30: Rf	81
TM-30: Rg	96
TM-30: Rcs,h1	-13

Prepared For:

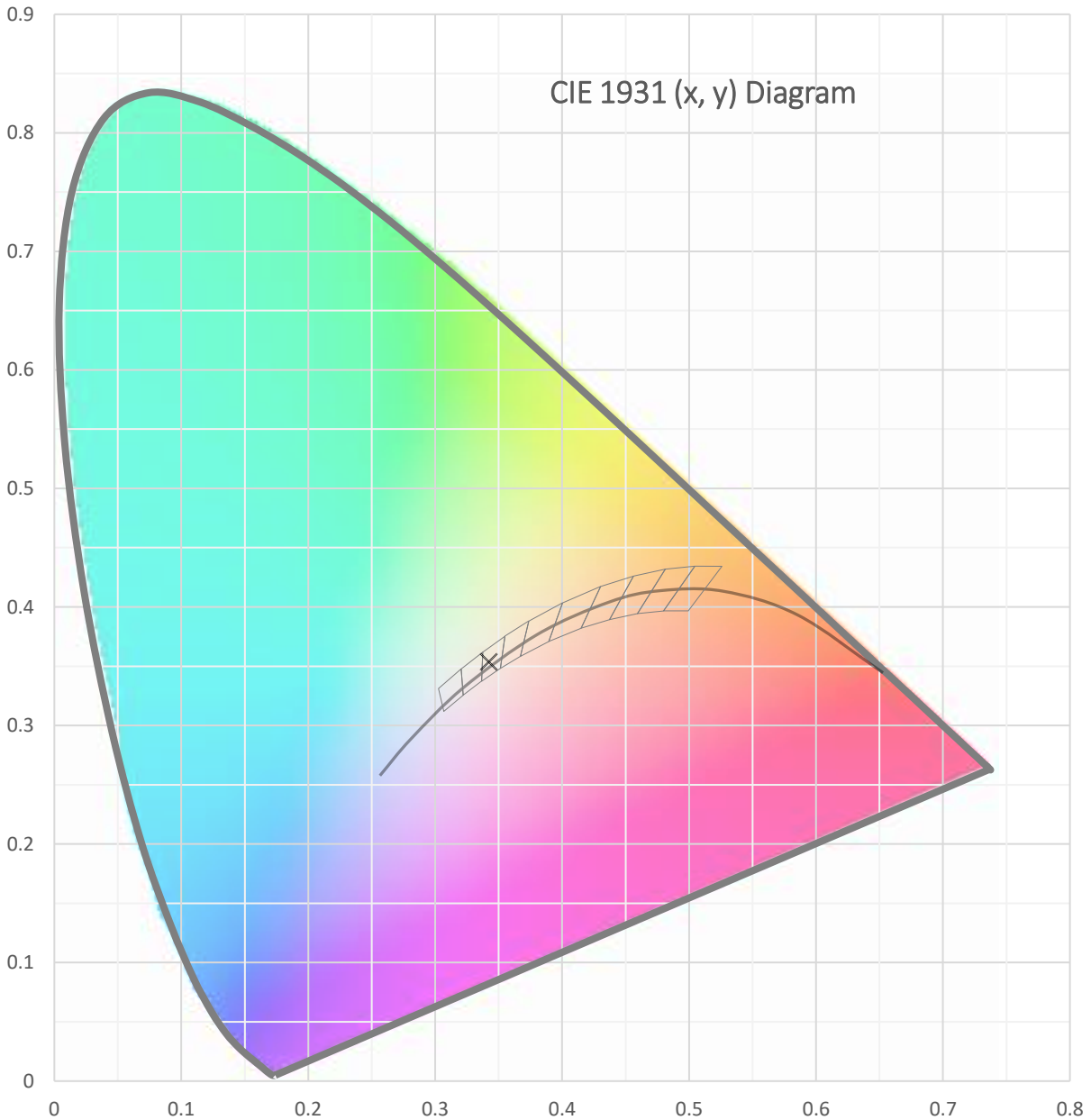
Topaz Lighting Corp
925 Waverly Avenue
Holtsville, NY 11742, USA

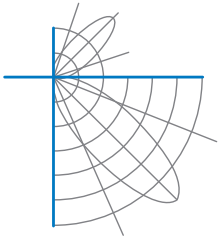
Test date: 12/28/2021
Report date: 12/30/2021

Signed: _____

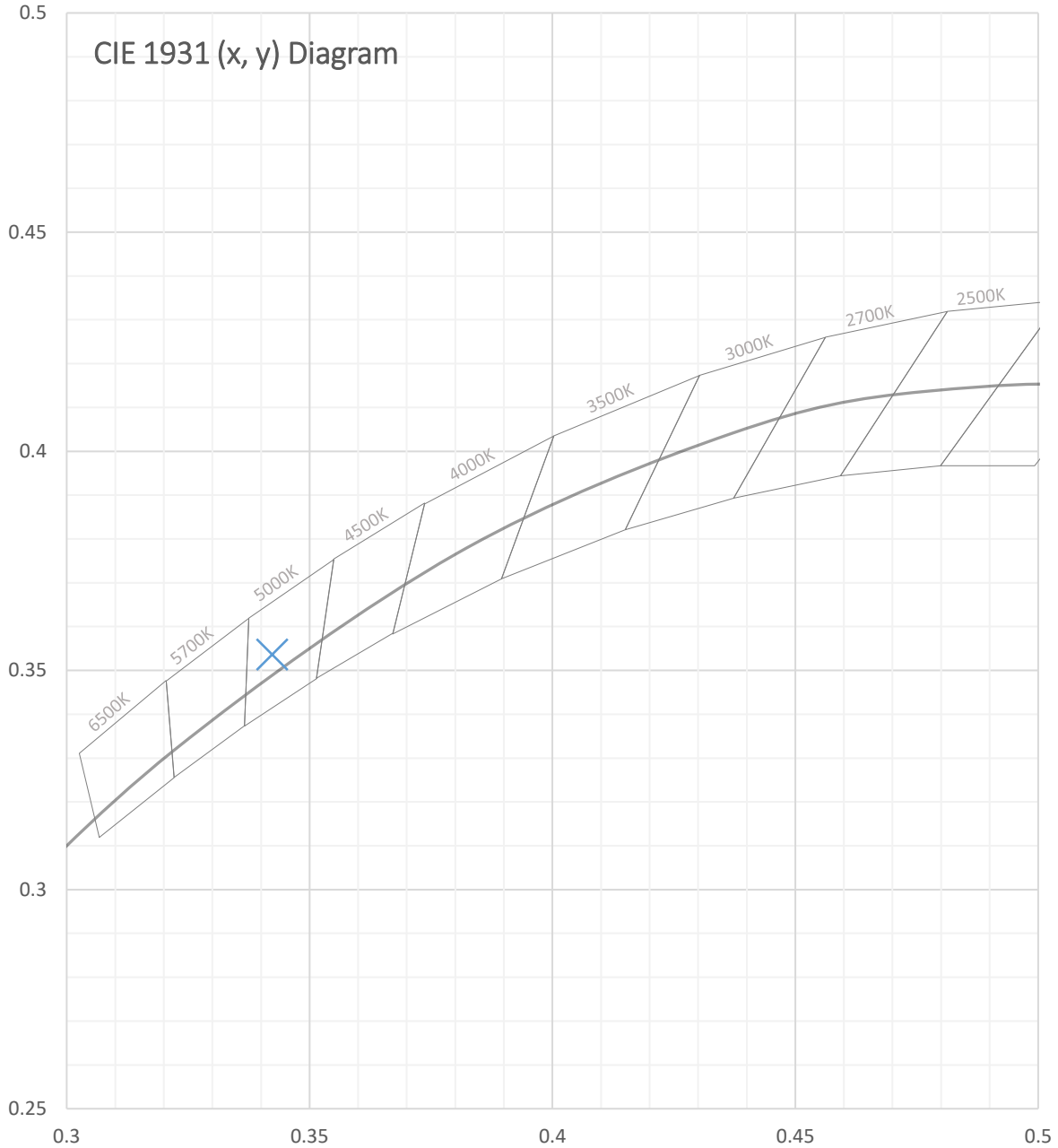


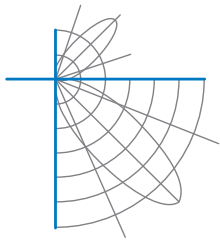
Test Report Number: LLIA001617-007





Test Report Number: LLIA001617-007





Test Report Number: LLIA001617-007

Total Radiant Flux	19.90 W
Total Luminous Flux	6372.3 Lm
Chromaticity CIE 1931 (x, y)	(0.3423, 0.3536)
Chromaticity CIE 1976 (u', v')	(0.2088, 0.4852)
Correlated Color Temperature (CCT)	5113 K
Color Rendering Index (Ra)	82
R1	80
R2	86
R3	91
R4	82
R5	81
R6	81
R7	86
R8	66
R9	3
R10	68
R11	82
R12	61
R13	82
R14	95
TM-30: Rf	81
TM-30: Rg	96
TM-30: Rcs,h1	-13
Distance from Planckian Locus (Duv)	0.0021
Scotopic/Photopic Ratio ‡	1.951

Electrical Data

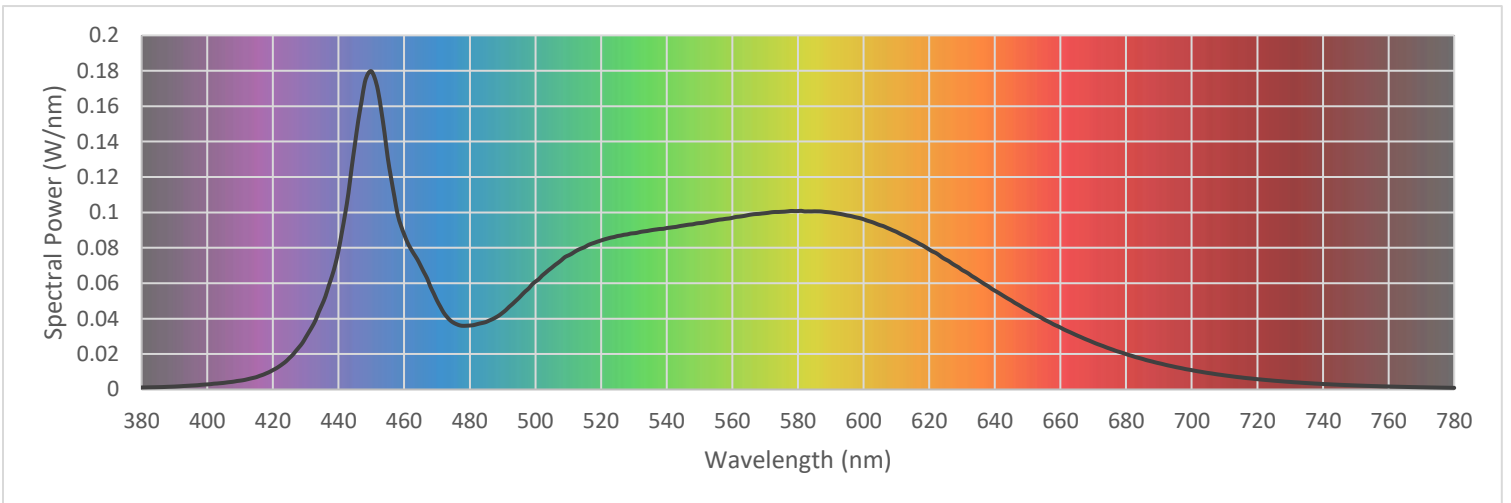
Voltage	120.0 Vac
Current	0.3269 A
Power	38.28 W
Frequency	59.99 Hz
Power Factor	0.976
Current THD	14.3 %

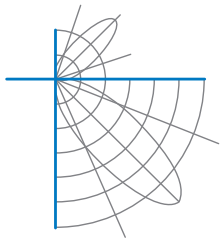


Test Report Number: LLIA001617-007

Summary Spectral Power Distribution (wavelength - nm, spectral power - W/nm)

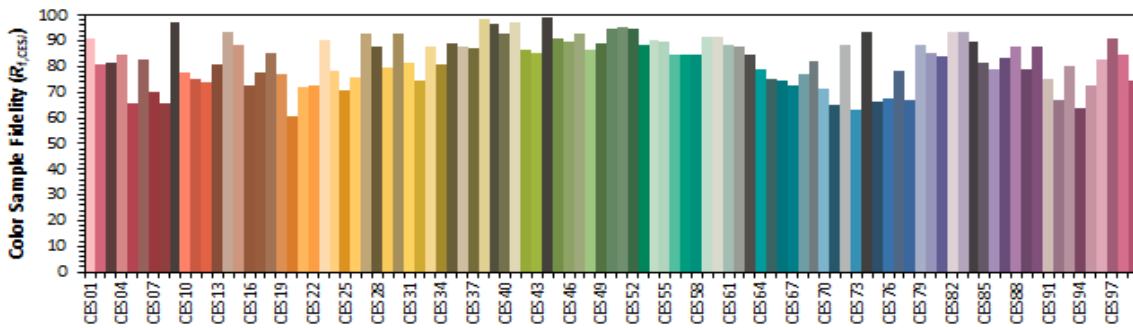
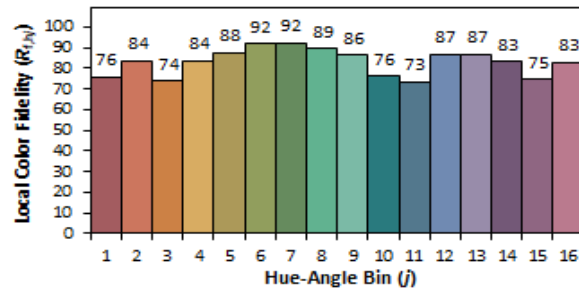
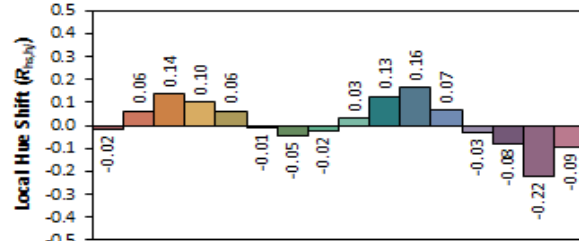
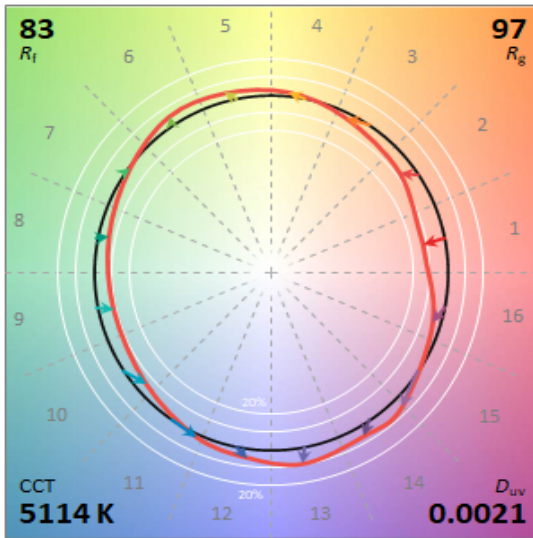
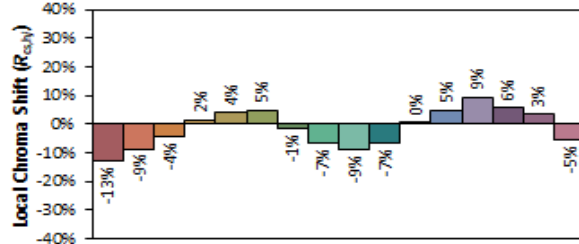
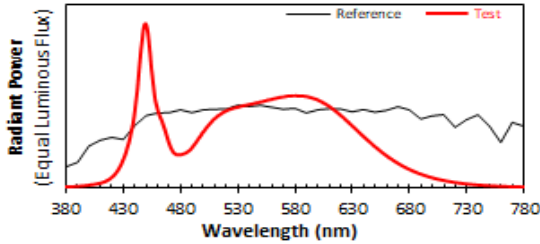
380	0.001137	480	0.036119	580	0.100768	680	0.019960
385	0.001309	485	0.038148	585	0.100631	685	0.017253
390	0.001638	490	0.043344	590	0.099988	690	0.014829
395	0.002206	495	0.051746	595	0.098286	695	0.012690
400	0.002871	500	0.060927	600	0.096129	700	0.010908
405	0.003715	505	0.068815	605	0.092795	705	0.009313
410	0.004984	510	0.075661	610	0.089051	710	0.007968
415	0.006996	515	0.080381	615	0.084295	715	0.006815
420	0.010943	520	0.084154	620	0.079041	720	0.005803
425	0.017742	525	0.086656	625	0.073417	725	0.004962
430	0.029411	530	0.088235	630	0.067514	730	0.004257
435	0.047992	535	0.089853	635	0.061749	735	0.003620
440	0.078646	540	0.091180	640	0.055805	740	0.003091
445	0.138673	545	0.092566	645	0.050269	745	0.002651
450	0.179721	550	0.093970	650	0.044765	750	0.002267
455	0.130817	555	0.095555	655	0.039553	755	0.001941
460	0.087569	560	0.096930	660	0.034962	760	0.001676
465	0.069938	565	0.098561	665	0.030549	765	0.001436
470	0.050220	570	0.099561	670	0.026608	770	0.001235
475	0.037744	575	0.100330	675	0.023078	775	0.001067
						780	0.000920





Test Report Number: LLIA001617-007

IES TM-30 Details



Notes:

x 0.3423
y 0.3535
u' 0.2088
v' 0.4852

CIE 13.3-1995
(CRI)
R_a 82
R_s 3



Test Report Number: LLIA001617-007

Test Equipment Configuration: LightLab International Allentown 2m Integrating Sphere
Measurements acquired using a Labsphere CDS 2600 spectroradiometer
Testing was performed using 4π geometry

Test Temperature: 25.2 °C

Test Procedure: Tested in accordance with the applicable sections of:
LM-79-19, LM-78-20, LM-58-20, ANSI_ANSLG C78.377-2017, TM-30-20

Significance: The laboratory has not participated in the selection of samples to be tested.
All testing is performed on the understanding that the significance of the report is limited to the extent that the test sample is representative of production units.

Notes: The measurements and other derived quantities contained in this report are based on the absolute data as measured.

Prorating the performance of the sample for the use of other component combinations (such as lamp / LED / Ballast / driver), or for use in different environmental conditions than that tested, may produce erroneous results.

This report is free of erasures and corrections

This report may contain data that are not covered by the NVLAP accreditation. Quantities marked with ‡ are not covered.

This report must not be used by the customer to claim product certification, approval or endorsement by NVLAP, NIST, or any agency of the Federal Government.