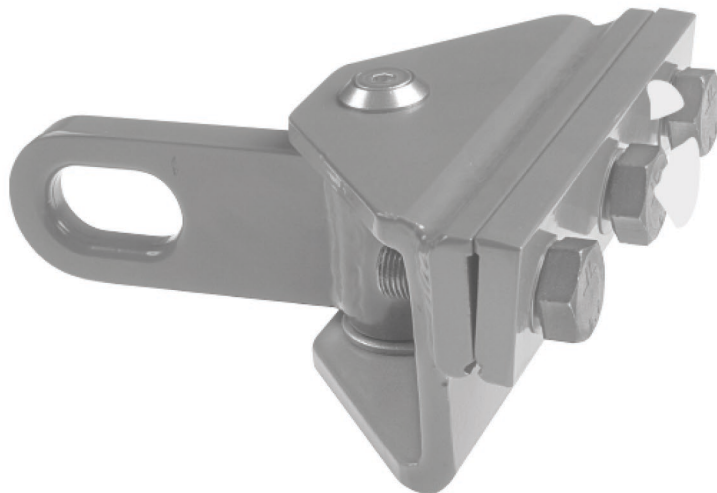


## Installation pull-off device for curve rails

Item number WB1245-01



### Material and weight

Weight: 3.400 kg

### Loads

Working load F traction: 15 kN

### Comments

- For the installation of the curve rails  
2 pull-off devices are necessary at least



**Southwire™**



A COLAS RAIL COMPANY

Contact Us: [Transit@southwire.com](mailto:Transit@southwire.com)