



Southwire™

ROMEX® BRAND SMARTBOX™ MULTI-MOUNT DEVICE BOXES

POLYCARBONATE

FEATURES

- Removable nail tab for metal stud mounting
- Horizontal or vertical mount
- Removable interior mounting blocks allow for more cubic inch capacity in box
- Top mounting blocks for vertical mounting
- 1/2" Knockouts for blue tube or PVC conduit connections
- Low voltage wall dividers allow for mixed voltages in same box
- Heavy-duty mounting screws provided

APPLICATIONS

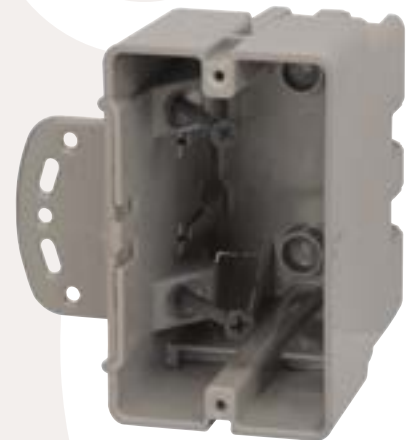
- Use to run low voltage cable in TV and home theater applications

STANDARD MATERIAL

- Polycarbonate

CERTIFICATIONS

- UL Listed
- RoHS Compliant



MSBMMT1G



PART #	DESCRIPTION	CUBIC INCHES (CM ³)	INNER QTY.	MASTER QTY.
MSBMMT1G	1 GANG	21.0 (344.2)	---	50
MSBMMT2G	2 GANG	37.0 (606.4)	---	30
MSBMMT3G	3 GANG	55.0 (901.3)	---	30
MSBMMT4G	4 GANG	67.0 (1097.9)	---	30
MSBMMT5G	5 GANG	91.5 (1499.5)	---	4
MSBMMT6G	6 GANG	110.0 (1802.6)	---	4
MSBMMW	WALL DIVIDER - LOW VOLTAGE	---	10	100
MSBMMSP1	SINGLE SCREW PLATE	---	10	100
MSBMMSP2	DOUBLE SCREW PLATE	---	10	100

Rev. 1, 3/24

1-855-798-6657 | SOUTHWIRE.COM

©2024 Southwire Company, LLC. All rights reserved.
*Registered Trademark & ™Trademark of Southwire Company, LLC.

**BUILT FOR DURABILITY.
BUILT FOR RELIABILITY.
BUILT FOR WORK.™**



Southwire™

ROMEX® BRAND SMARTBOX™ MULTI-MOUNT DEVICE BOXES

POLYCARBONATE



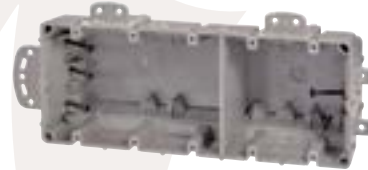
MSBMMT2G



MSBMMT3G



MSBMMT4G



MSBMMT5G



MSBMMW



MSBMMSP2



MSBMMT6G



MSBMMSP1

Rev. 1, 3/24

**BUILT FOR DURABILITY.
BUILT FOR RELIABILITY.
BUILT FOR WORK.™**

1-855-798-6657 | SOUTHWIRE.COM

©2024 Southwire Company, LLC. All rights reserved.
*Registered Trademark & ™Trademark of Southwire Company, LLC.