

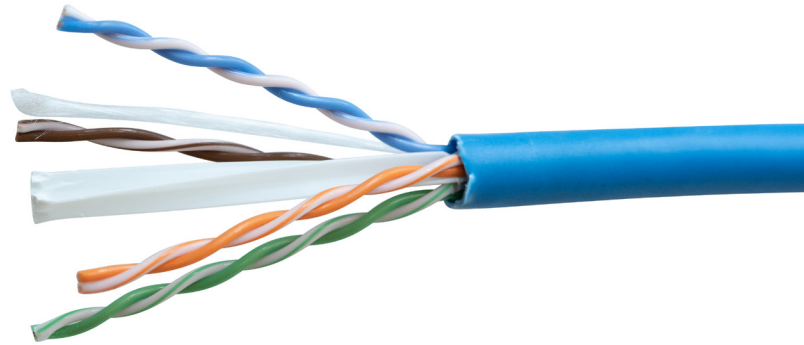


CATEGORY CABLE WITH LP LISTING

CAT 6E 550 MHZ 23 AWG 4 PAIR SOLID COPPER TYPE CMP-LP (0.6A) 105C UL LISTED

SPECS

- Limited Power Rated Data Cable
- PoE Applications
- Designed for indoor and plenum installations
- Unshielded twisted pair cable
- TIA/EIA 568-C.2
- NEC ARTICLE 800
- IEEE802.3bt
- UL 444 CMP
- NFPA 262 (UL 910)
- RoHS 3 Directive (EU) 2015/863
- C(UL)US LISTED



Model #	Tappan	Tappan	Tappan	Tappan	Tappan	Tappan	Tappan	Tappan
Stock #	I99997-1A	I99997-1H	I99997-2A	I99997-2H	I99997-3A	I99997-3H	I99997-13A	I99997-13H
UPC	032886885815	032886885839	032886885846	032886885853	029892498160	029892498108	032886907197	029892498405
Description	CAT 6E 550 MHZ 23/4P w/Spline Be CMP 1000R	CAT 6E 550 MHZ 23/4P w/Spline Be CMP 1000RB	CAT 6E 550 MHZ 23/4P w/Spline We CMP 1000R	CAT 6E 550 MHZ 23/4P w/Spline We CMP 1000RB	CAT 6E 550 MHZ 23/4P w/Spline Yw CMP 1000R	CAT 6E 550 MHZ 23/4P w/Spline Yw CMP 1000RB	CAT 6E 550 MHZ 23/4P w/Spline Bk CMP 1000R	CAT 6E 550 MHZ 23/4P w/Spline Bk CMP 1000RB
Package	Reel	Reel In Box	Reel	Reel In Box	Reel	Reel In Box	Reel	Reel In Box
Weight	26 lbs.	26 lbs.	26 lbs.	26 lbs.	26 lbs.	26 lbs.	26 lbs.	26 LBS.
Jacket Color	Blue	Blue	White	White	Yellow	Yellow	Black	Black
Insulation Type	HDPE	HDPE	HDPE	HDPE	HDPE	HDPE	HDPE	HDPE
Jacket Type	LS-PVC	LS-PVC	LS-PVC	LS-PVC	LS-PVC	LS-PVC	LS-PVC	LS-PVC



CATEGORY CABLE WITH LP LISTING

CAT6 250 MHZ 23 AWG 4 Pair Solid Copper TYPE CMP-LP (0.5A) 75C

SPECS

- Limited Power Rated Data Cable
- PoE Applications
- Designed for indoor and plenum installations
- Unshielded twisted pair cable
- TIA/EIA 568-C.2
- NEC ARTICLE 800
- IEEE 802.3af
- UL 444 CMP
- NFPA 262 (UL 910)/CSA FT6
- RoHS 3 Directive (EU) 2015/863
- C(UL)US LISTED



Model #	Tappan	Tappan	Tappan	Tappan	Tappan	Tappan	Tappan	Tappan	Tappan
Stock #	I99993-1B	I99993-1H	I99993-2B	I99993-2H	I99993-10B	I99993-10H	I99993-11B	I99993-11H	I99993-12B
UPC	032886885730	032886885747	032886768200	032886757006	032886906558	029892498467	032886906633	032886906657	032886906671
Description	CAT6 250 MHZ 23/4P SOL BC CMP BE 1000PB	CAT6 250 MHZ 23/4P SOL BC CMP BE 1000RIB	CAT6 250 MHZ 23/4P SOL BC CMP WHT 1000PB	CAT6 250 MHZ 23/4P SOL BC CMP WHT 1000RIB	CAT6 250 MHZ 23/4P SOL BC CMP GRY 1000PB	CAT6 250 MHZ 23/4P SOL BC CMP GRY 1000RIB	CAT6 250 MHZ 23/4P SOL BC CMP YEL 1000PB	CAT6 250 MHZ 23/4P SOL BC CMP YEL 1000RIB	CAT 6 250 MHZ 23/4P SOL BC CMP OE 1000PB
Package	Pullbox	Reel In Box	Pullbox	Reel In Box	Pullbox	Reel In Box	Pullbox	Reel In Box	Pullbox
Weight	26 lbs.	26 lbs.	26 lbs.	26 lbs.	26 lbs.	26 lbs.	26 lbs.	26 LBS.	26 lbs.
Jacket Color	Blue	Blue	White	White	Gray	Gray	Yellow	Yellow	Orange
Insulation Type	FEP	FEP	FEP	FEP	FEP	FEP	FEP	FEP	FEP
Jacket Type	LS-PVC	LS-PVC	LS-PVC	LS-PVC	LS-PVC	LS-PVC	LS-PVC	LS-PVC	LS-PVC

Model #	Tappan	Tappan	Tappan	Tappan	Tappan	Tappan	Tappan	Tappan	
Stock #	I99993-12H	I99993-9B	I99993-8B	I99993-8H	I99993-4B	I99993-4H	I99993-13B	I99993-13H	
UPC	032886906695	032886895302	032886895319	029892498689	032886906596	029892498566	032886906732	029892498801	
Description	CAT 6 250 MHZ 23/4P SOL BC CMP OE 1000RIB	CAT 6 250 MHZ 23/4P SOL BC CMP GN 1000PB	CAT 6 250 MHZ 23/4P SOL BC CMP RD 1000PB	CAT 6 250 MHZ 23/4P SOL BC CMP RD 1000RIB	CAT 6 250 MHZ 23/4P SOL BC CMP PK 1000PB	CAT 6 250 MHZ 23/4P SOL BC CMP PK 1000RIB	CAT 6 250 MHZ 23/4P SOL BC CMP BK 1000PB	CAT 6 250 MHZ 23/4P SOL BC CMP BK 1000RIB	CAT 6 250 MHZ 23/4P SOL BC CMP BK 1000RIB
Package	Reel In Box	Pullbox	Pullbox	Reel In Box	Pullbox	Reel In Box	Pullbox	Reel In Box	
Weight	26 lbs.	26 lbs.	26 lbs.	26 lbs.	26 lbs.	26 lbs.	26 lbs.	26 lbs.	
Jacket Color	Orange	Green	Green	Red	Red	Pink	Black	Black	
Insulation Type	FEP	FEP	FEP	FEP	FEP	FEP	FEP	FEP	
Jacket Type	LS-PVC	LS-PVC	LS-PVC	LS-PVC	LS-PVC	LS-PVC	LS-PVC	LS-PVC	



PART A: GENERAL FAQ'S

1. What is a PoE cable?

PoE, "Power over Ethernet" cable is a network cable that safely transfers electrical power to remote devices over via Ethernet network.

2. What is a PoE cable consist of?

Traditional PoE cable consists of two or four pair twisted conductors under a jacket.

3. What kind of cable do I need for PoE?

Some Category 5E and Category 6 cables, as well as Cat 6E and Cat 6A can be used to support PoE devices.

4. Where do we use PoE cables?

PoE cable may be used in Ethernet Networking systems to power any PoE designated devices. Examples of applications are security cameras, lighting systems and IP Phones.

5. What are the PoE standards?

- a. IEEE 802.3af
- b. IEEE 802.3at
- c. IEEE 802.3bt

6. What is 802.3at PoE Standard?

The original IEEE 802.3af-2003 PoE standard provides up to 15.4 W of DC power on each port. The updated IEEE 802.3at-2009 PoE standard, also known as PoE+ or PoE plus, allows for up to 30 W of power to Type 2 devices. That's enough power for devices such as VoIP phones, wireless access points, and security cameras. But it's not enough for technology like flat screen displays, LED lighting, or retail POS terminals.

7. What is 802.3bt PoE Standard?

To meet the demand for higher power, the IEEE released a new PoE standard at the end of 2018 to significantly increase capacity. IEEE 802.3bt allows for up to 60 W to 100 W of power at the source by providing power over four pairs of wires, compared to the previous technology's ability to power over just two pairs. This increase in power allows you to use PoE for a greater range of devices and applications.

8. What is UL's PoE Certification?

UL has introduced a Limited Power (LP) Certification to simplify the cable choice and installation considerations. The "-LP" cable designation indicates that the cable has been evaluated to carry the marked current under reasonable worst-case installation scenarios without exceeding the temperature rating of the cable.

9. What is CMP-LP(0.5A) and CMP-LP(0.6A)?

By adding -LP to a plenum cable, UL has listed a specific designate that identifies the ampacity a cable can handle. For LP(0.5A) ampacity rating, the cable can handle up to 0.5 Amps which equates to 100 watts using 50 volts over four pairs. For LP(0.6A) ampacity rating, the cable can handle up to 0.6 Amps which equates to 120 watts using 50 volts over four pairs.



PART A: GENERAL FAQ'S CONT.

Name	IEEE Standard	Power to Powered Device (PD)	Max. Power per Port	Energized Pairs	Supported Devices
PoE	IEEE 802.3af	12.95 W	15.4 W	2-pair	Static surveillance cameras, VoIP phones, wireless access points
PoE+	IEEE 802.3at	25.5 W	30 W	2-pair	PTZ cameras, video IP phones, alarm systems
PoE++	IEEE 802.3bt (Type 3)	51 W	60 W	4-pair	Video conferencing equipment, multi-radio wireless access points
PoE++	IEEE 802.3bt (Type 4)	71.3 W	100 W	4-pair	Laptops, flat screens

PART B: SOUTHWIRE POE CABLE TYPES

PN I99997 CAT6E 550 MHZ 23 AWG 4 Pair Solid Copper CMP-LP(0.6A)
 6EP -CAT 6E SOUTHWIRE® TAPPAN™ I99997 E158012 23AWG 4PR UTP TYPE CMP-LP (0.6A) 105C C(UL)US LISTED ---ETL VERIFIED TO TIA-568.C.2
 CATEGORY 6 RoHS-2 COMPLIANT

- Meets or exceeds ANSI/TIA-568-C.2 test to 550MHz
- NEC ARTICLE 800
- IEEE802.3bt
- UL 444 CMP
- NFPA 262 (UL 910)

Model #	Tappan	Tappan	Tappan	Tappan	Tappan	Tappan	Tappan	Tappan
Stock #	I99997-1A	I99997-1H	I99997-2A	I99997-2H	I99997-3A	I99997-3H	I99997-13A	I99997-13H
UPC	032886885815	032886885839	032886885846	032886885853	029892498160	029892498108	032886907197	029892498405
Description	CAT 6E 550 MHZ 23/4P w/Spline Be CMP 1000R	CAT 6E 550 MHZ 23/4P w/Spline Be CMP 1000RB	CAT 6E 550 MHZ 23/4P w/Spline We CMP 1000R	CAT 6E 550 MHZ 23/4P w/Spline We CMP 1000RB	CAT 6E 550 MHZ 23/4P w/Spline Yw CMP 1000R	CAT 6E 550 MHZ 23/4P w/Spline Yw CMP 1000RB	CAT 6E 550 MHZ 23/4P w/Spline Bk CMP 1000R	CAT 6E 550 MHZ 23/4P w/Spline Bk CMP 1000RB
Package	Reel	Reel In Box	Reel	Reel In Box	Reel	Reel In Box	Reel	Reel In Box
Weight	26 lbs.	26 lbs.	26 lbs.	26 lbs.	26 lbs.	26 lbs.	26 lbs.	26 LBS.
Jacket Color	Blue	Blue	White	White	Yellow	Yellow	Black	Black
Insulation Type	HDPE	HDPE	HDPE	HDPE	HDPE	HDPE	HDPE	HDPE
Jacket Type	LS-PVC	LS-PVC	LS-PVC	LS-PVC	LS-PVC	LS-PVC	LS-PVC	LS-PVC



PART B: SOUTHWIRE POE CABLE TYPES CONT.

PN I99993 CAT6 250 MHZ 23 AWG 4 Pair Solid Copper CMP-LP(0.5A)

6P SOUTHWIRE® TAPPAN(TM) CAT6 23 AWG 4PR UTP E118871 C(UL)US CMP 75C -- TYPE CMP-LP(0.5A) FT6 ETL VERIFIED TO TIA/EIA-568-C.2 CATEGORY 6 250MHZ ROHS-3 COMPLIANT

- Meets or exceeds TIA/EIA 568-C.2
- NEC ARTICLE 800
- Passes IEEE 802.3af
- UL 444 CMP
- NFPA 262 (UL 910) / CSA FT6

Model #	Tappan	Tappan	Tappan	Tappan	Tappan	Tappan	Tappan	Tappan	Tappan
Stock #	I99993-1B	I99993-1H	I99993-2B	I99993-2H	I99993-10B	I99993-10H	I99993-11B	I99993-11H	I99993-12B
UPC	032886885730	032886885747	032886768200	032886757006	032886906558	029892498467	032886906633	032886906657	032886906671
Description	CAT6 250 MHZ 23/4P SOL BC CMP BE 1000PB	CAT6 250 MHZ 23/4P SOL BC CMP BE 1000RIB	CAT6 250 MHZ 23/4P SOL BC CMP WHT 1000PB	CAT6 250 MHZ 23/4P SOL BC CMP WHT 1000RIB	CAT6 250 MHZ 23/4P SOL BC CMP GRY 1000PB	CAT6 250 MHZ 23/4P SOL BC CMP GRY 1000RIB	CAT6 250 MHZ 23/4P SOL BC CMP YEL 1000PB	CAT6 250 MHZ 23/4P SOL BC CMP YEL 1000RIB	CAT 6 250 MHZ 23/4P SOL BC CMP OE 1000PB
Package	Pullbox	Reel In Box	Pullbox	Reel In Box	Pullbox	Reel In Box	Pullbox	Reel In Box	Pullbox
Weight	26 lbs.	26 lbs.	26 lbs.	26 lbs.	26 lbs.	26 lbs.	26 lbs.	26 LBS.	26 lbs.
Jacket Color	Blue	Blue	White	White	Gray	Gray	Yellow	Yellow	Orange
Insulation Type	FEP	FEP	FEP	FEP	FEP	FEP	FEP	FEP	FEP
Jacket Type	LS-PVC	LS-PVC	LS-PVC	LS-PVC	LS-PVC	LS-PVC	LS-PVC	LS-PVC	LS-PVC

Model #	Tappan	Tappan	Tappan	Tappan	Tappan	Tappan	Tappan	Tappan
Stock #	I99993-12H	I99993-9B	I99993-8B	I99993-8H	I99993-4B	I99993-4H	I99993-13B	I99993-13H
UPC	032886906695	032886895302	032886895319	029892498689	032886906596	029892498566	032886906732	029892498801
Description	CAT 6 250 MHZ 23/4P SOL BC CMP OE 1000RIB	CAT 6 250 MHZ 23/4P SOL BC CMP GN 1000PB	CAT 6 250 MHZ 23/4P SOL BC CMP RD 1000PB	CAT 6 250 MHZ 23/4P SOL BC CMP RD 1000RIB	CAT 6 250 MHZ 23/4P SOL BC CMP PK 1000PB	CAT 6 250 MHZ 23/4P SOL BC CMP PK 1000RIB	CAT 6 250 MHZ 23/4P SOL BC CMP BK 1000PB	CAT 6 250 MHZ 23/4P SOL BC CMP BK 1000RIB
Package	Reel In Box	Pullbox	Pullbox	Reel In Box	Pullbox	Reel In Box	Pullbox	Reel In Box
Weight	26 lbs.	26 lbs.	26 lbs.	26 lbs.	26 lbs.	26 lbs.	26 lbs.	26 lbs.
Jacket Color	Orange	Green	Green	Red	Red	Pink	Black	Black
Insulation Type	FEP	FEP	FEP	FEP	FEP	FEP	FEP	FEP
Jacket Type	LS-PVC	LS-PVC	LS-PVC	LS-PVC	LS-PVC	LS-PVC	LS-PVC	LS-PVC